

**Contemporary
and Idyllic Community**

1. Jebel Ali Village	8
2. Community and Amenities	14
3. Location and Connectivity	28
4. Townhouses	36
5. Nakheel, The Master Developer	66

Index

1

8 **jebel ali village** 9

Inspired by the Splendour
of the Rolling Hills

The Rhythm of Nature.

An idyllic gated sanctuary in Dubai, at Jebel Ali Village nature, leisure and a vibrant cosmopolitan life unite. By harnessing the beauty of the undulating landscape, this community helps one get away from the noise of the city yet allows one to stay connected with the modern conveniences of urban living.

10



Designed to echo the soft symphony of nature and character of the lush panoramas

These luxurious four-and three-bedroom townhouses offer unrivalled living with handsomely-appointed community amenities that evoke a tranquil yet vibrant atmosphere. Choose from light and dark finishing options to best suit your sense of style.



2

Community and Amenities

14

15

Community Living at its Best.



A Liveable Sense of Luxury

The family-focused community of Jebel Ali Village features four distinct communities, with relaxing pools, active sports facilities, pristine parks and an array of recreational activities. Here, time slows down to a relaxed pace and one can experience nature in its purest form.



PARKS



POND



Designed with the
art of living in mind.



Everything You Can Expect. And More.

The tranquil oasis of Jebel Ali Village houses an extensive range of urban community amenities, including verdant meandering paths, pockets of paradise-green gardens, impressive jogging track, expansive community pools, tempting water features, kids' play areas and large open parks.

From leisure community pools and extensive biking trails to a community vegetable farm and tranquil duck ponds, the unparalleled community amenities offer a serene escape from the hustle and bustle of everyday life.



CYCLING
TRACKS



MOUNTAIN
BIKING



Blissful Amenities.

Keep the kids engaged at the kids' play area and amble along the winding green trails, explore the cycling tracks or embark on an adventure at an off-roading mountain bike trail.

Sap-green valleys serve as incredible retreats for artists, writers, and painters. The pedestrian bike path would keep children busy, while families can relax and unwind at community parks.



KIDS PLAY AREA



GREEN TRAILS

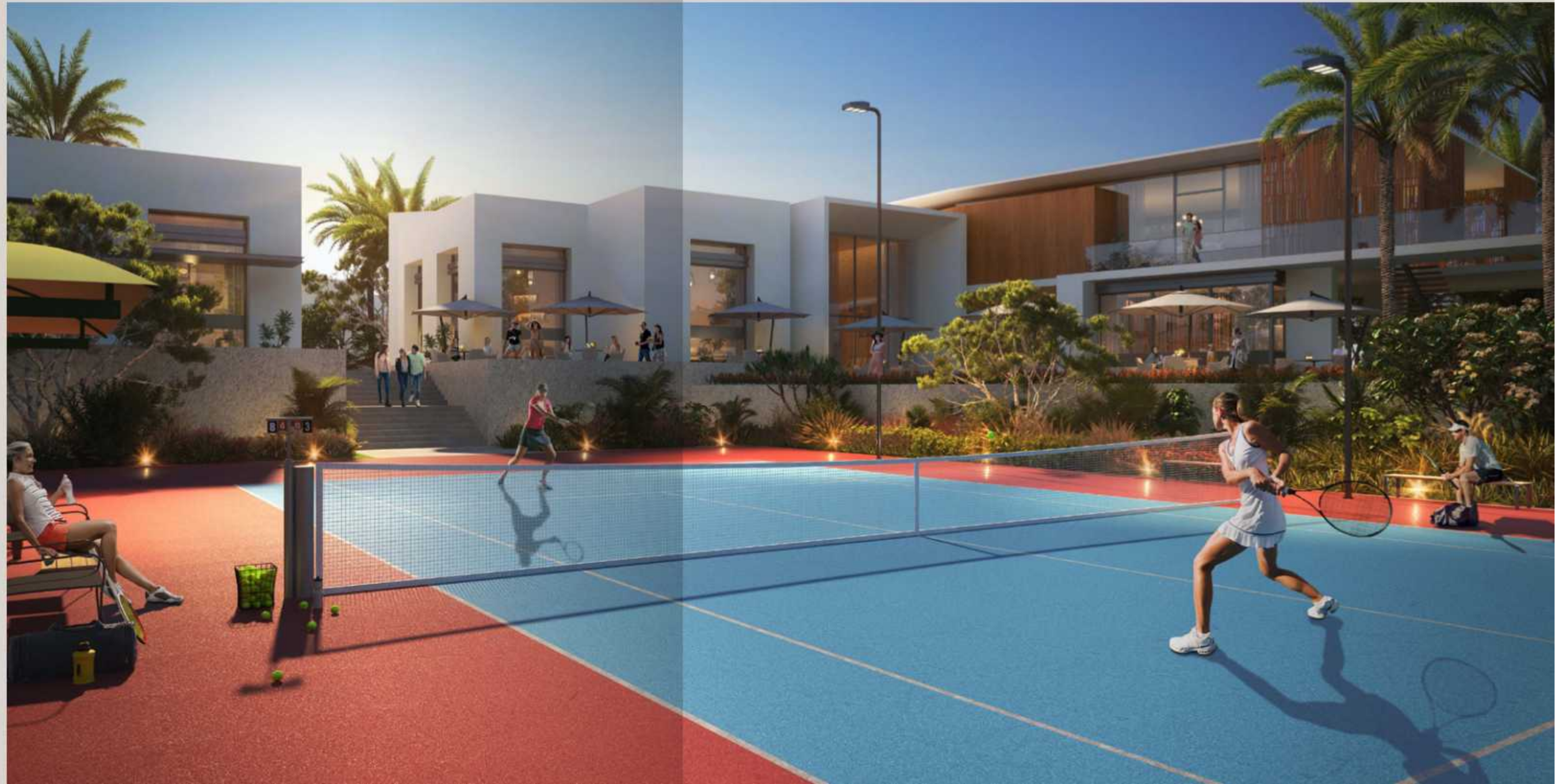


SWIMMING POOLS

An Active Lifestyle



Experience an active lifestyle at the sports zones featuring a five-a-side football pitch, paddle tennis and basketball courts.



3

Location and Connectivity

28

29

Perfectly Located.

The verdant locale of Jebel Ali Village

Jebel Ali Village is located next to Sheikh Zayed Road and Ibn Battuta Mall and just minutes away from Dubai's most celebrated recreational venues, entertainment precincts, world-class education, renowned hospitality, excellent healthcare and religious institutions including a mosque, Gurudwara and churches. Savour an unmatched lifestyle with modern conveniences at their doorstep.

30



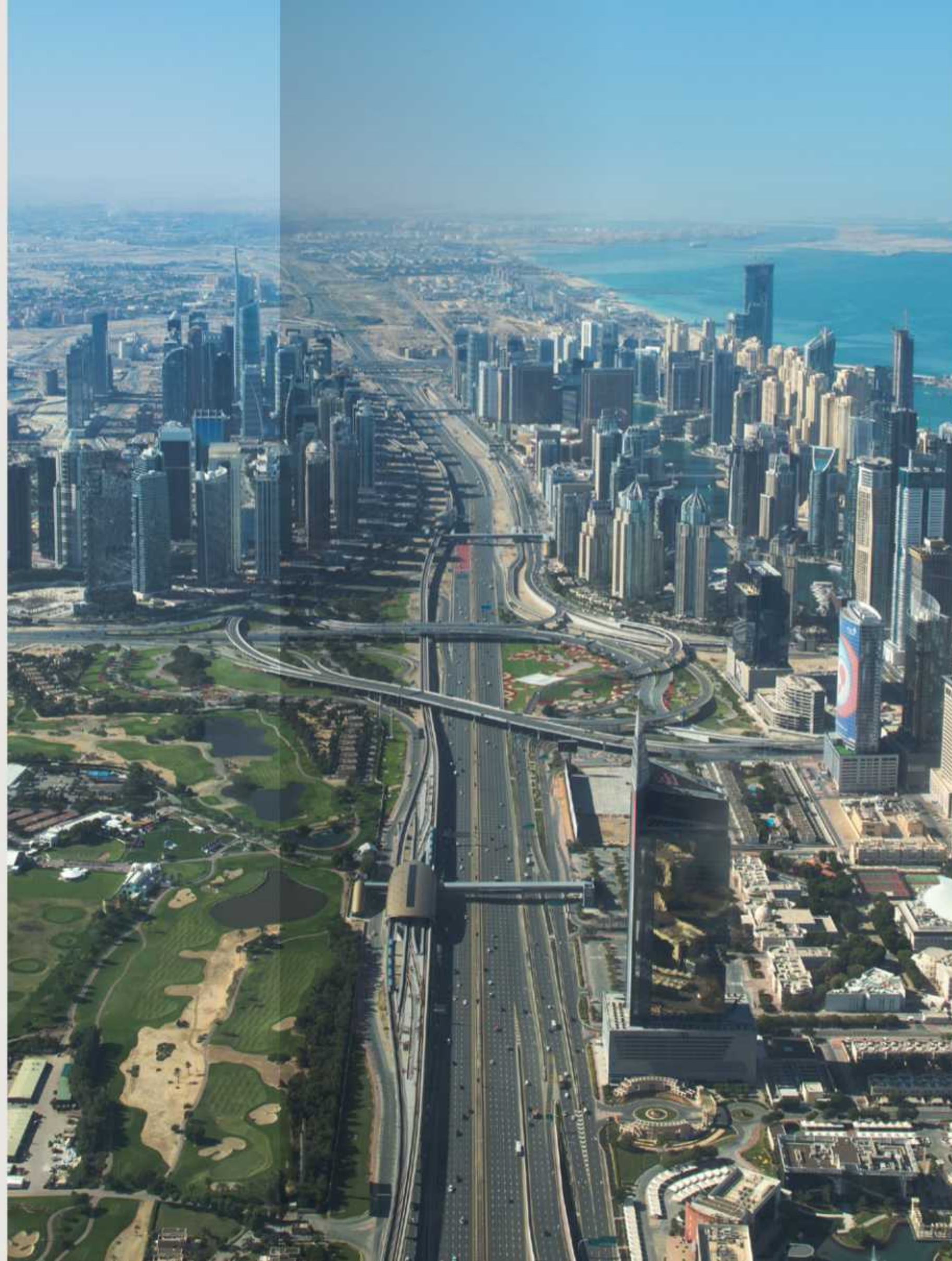
MOSQUES



CHURCHES



TEMPLES



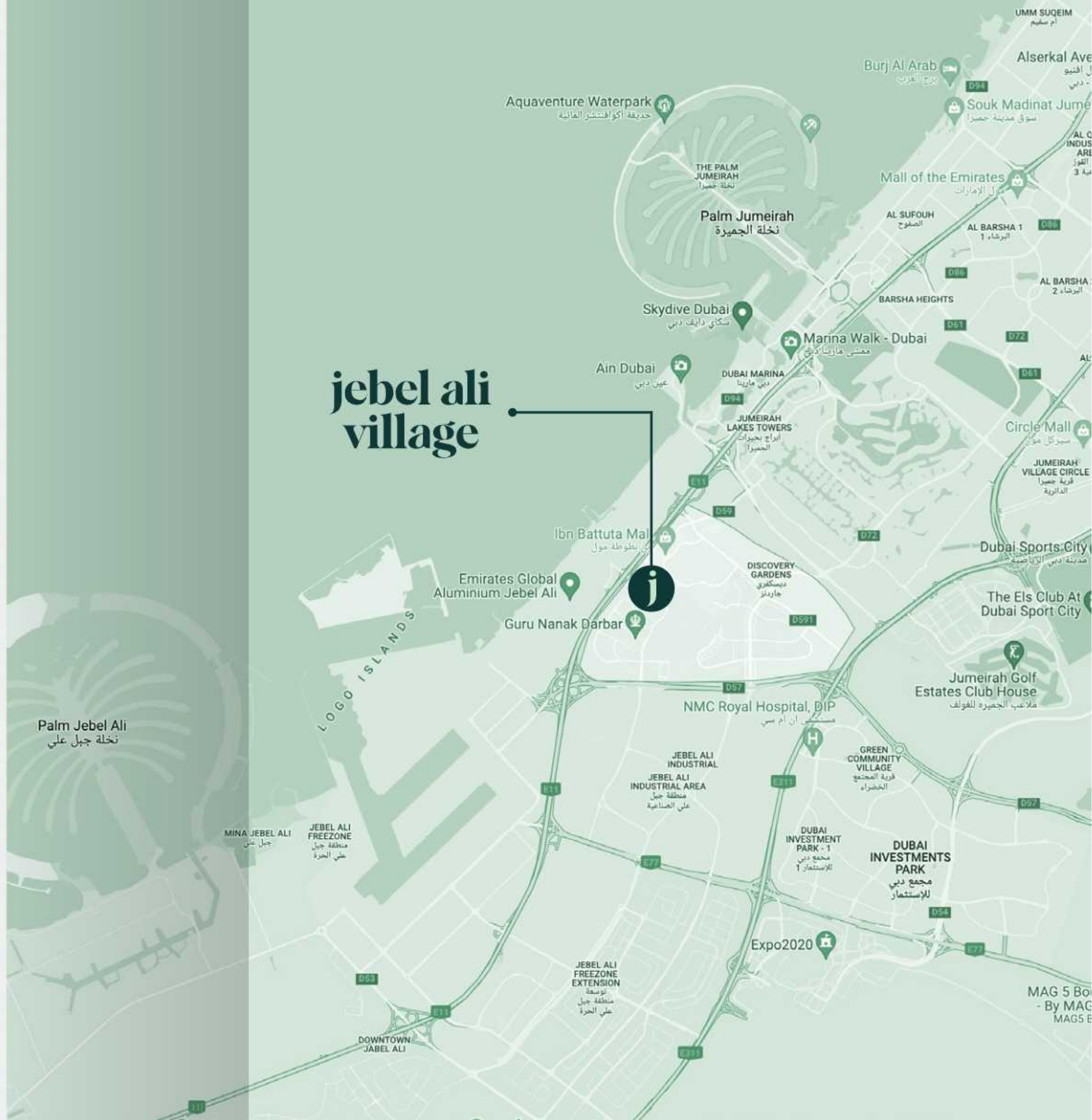
31

Conveniently Connected.

Excellent Accessibility.

32

Stay connected to everything you love in Dubai with convenient transport options including public transportation and easy connectivity to Sheikh Zayed Road. Experience several vibrant destinations from this convenient address. Within reach and located 39km from Dubai International Airport & 30km from Maktoum International Airport.



4

Townhouses

A Beautifully Crafted Sanctuary.

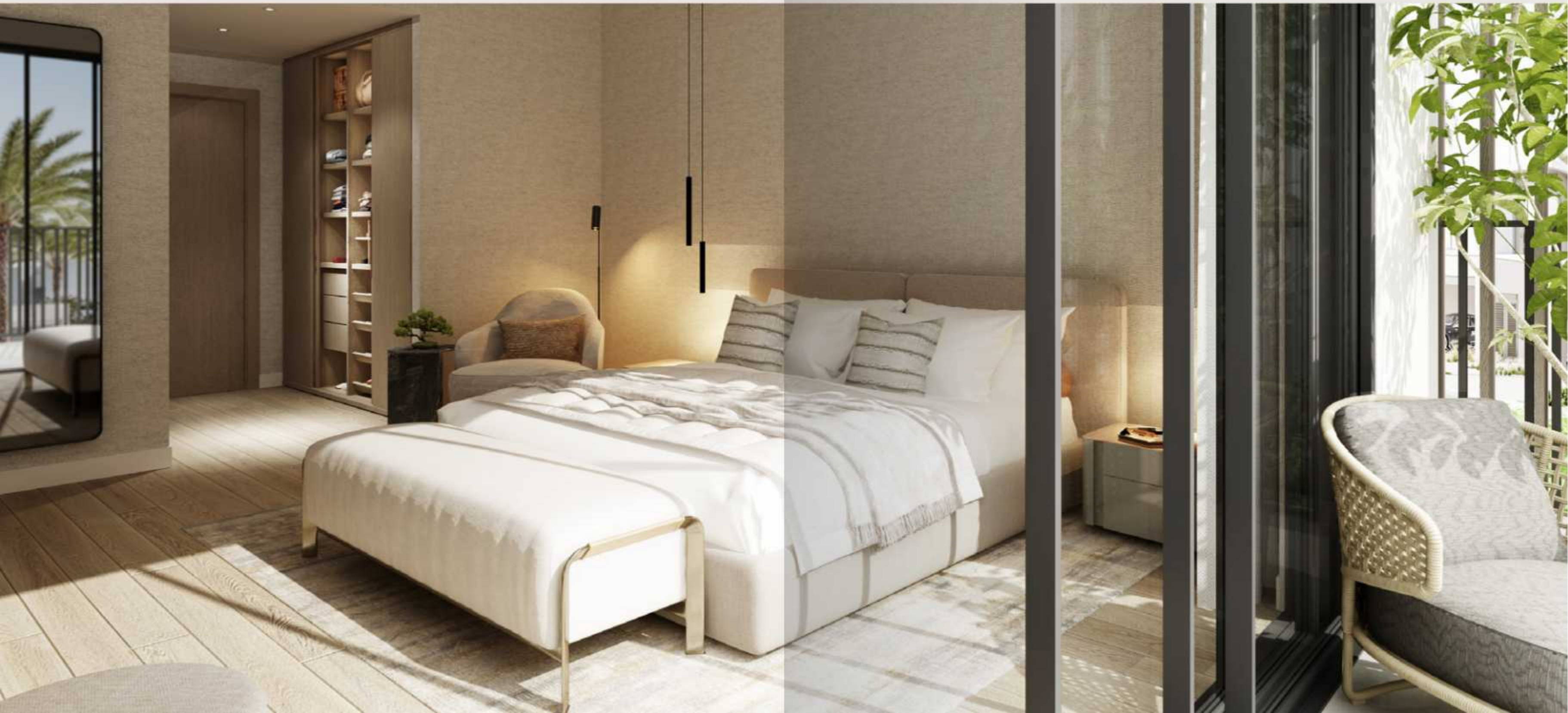






Resplendent Townhouses.

The sumptuous interiors exude an exquisite impression from the moment of arrival. The three and four bedroom townhouses embody the prestige and charisma of a luxurious and contemporary home with upscale comfort, effortless glamour and timeless interiors. The townhouses offer modern interior finishes for buyers to choose from dark & light color schemes.







Every detail has been meticulously crafted with the ground-floor terraces, powder rooms and first-floor ensuite bathrooms. With the tendrils of moonlight penetrating the floor-to-ceiling glass doors, which open to expansive yards, residents will relish a deep sense of tranquil space and serenity in their well-ventilated and immaculate townhouses.

Keeping the comfort of residents in mind, the garages are fully equipped with electric car chargers. The marvellous features of an expansive terrace, living room and bathroom makes life effortless and comfortable. With airy and open layouts, these townhouses are built keeping ones' desires in mind.

48



ELECTRIC CAR CHARGING



GARAGE WITH ELECTRIC DOORS



LAUNDRY ROOM



MAID'S ROOM



STORAGE ROOM



SPACIOUS BACK GARDEN



Four Bedroom Townhouses

A Statement of
Quality, Liveability
and Scale

50



The open layouts, sublime design and immaculate interiors with floor-to-ceiling glass windows ensure that these homes are bathed in natural sunlight. Ranging from 3194 – 3386 square feet, residents can relish the outstanding quality of interior finishes with spacious garage parking that can accommodate two cars at the front of the townhouse.

The ground floor guest suite & terrace offer the perfect places to unwind after a long day. These are ideal spots for congregating with loved ones over scrumptious meals and barbecues.

The other three rooms upstairs have en-suite bathrooms, built-in wardrobes, and a spacious balcony. To maximise the level of comfort, the master suite features an en-suite bathroom and a walk-in closet. Four-bedroom townhouses also possess a maid's room with an en-suite bathroom and a laundry room.







56

Three Bedroom Townhouses

Utterly
Phenomenal.



The three-bedroom townhouses are designed with a high level of functionality as the floor-to-ceiling glass windows elevate everyday living and illuminate the house. From 2882 square feet, these homes come with a two-car park garage at the front and an expansive yard at the rear. A maid's room with an en-suite bathroom, a laundry room and a storage room are also featured in these stunning homes.

The bedrooms possess a unique character and are designed on a grand scale. All the bedrooms feature an en-suite bathroom and ample spaces, a secluded haven to relish the azure blue skies, listen to the calming winds, and relax with a cup of coffee. The light-filled master bedrooms feature generously-proportioned walk-in closets.







5

The Master Developer

64

65



NAKHEEL

Dubai-based Nakheel is a world-leading master developer whose innovative, landmark projects form an iconic portfolio of master communities and residential, retail, hospitality and leisure developments that are pivotal to realising Dubai's vision. Nakheel's waterfront projects, including the world-famous, award-winning Palm Jumeirah, have added more than 300 kilometres to Dubai's original, 70km coastline, paving the way for the development of hundreds of seafront homes, resorts, hotels and attractions.

Nakheel's master developments span 15,000 hectares, accommodate nearly 300,000 people and provide a growing range of destinations, attractions and facilities for Dubai's citizens, residents and tourists. They include Palm Jumeirah, The World, Jumeirah Islands, Jumeirah Park, Jumeirah Village, Al Furjan, The Gardens, Discovery Gardens, Jebel Ali Village, Dragon City, Nad Al Sheba Villas, Warsan Village, International City and the upcoming Deira Islands – a new destination for tourism, living and leisure at Dubai's oldest, most traditional trading hub.

Nakheel's diverse project portfolio also includes world-class shopping, dining and entertainment destinations and a distinct collection of hotels and resorts across Dubai.

66



Contact

Call 800 NAKHEEL
www.nakheel.com

