



PORT
— *de La* —
MER
LA SIRÈNE

LIVE ON THE HORIZON

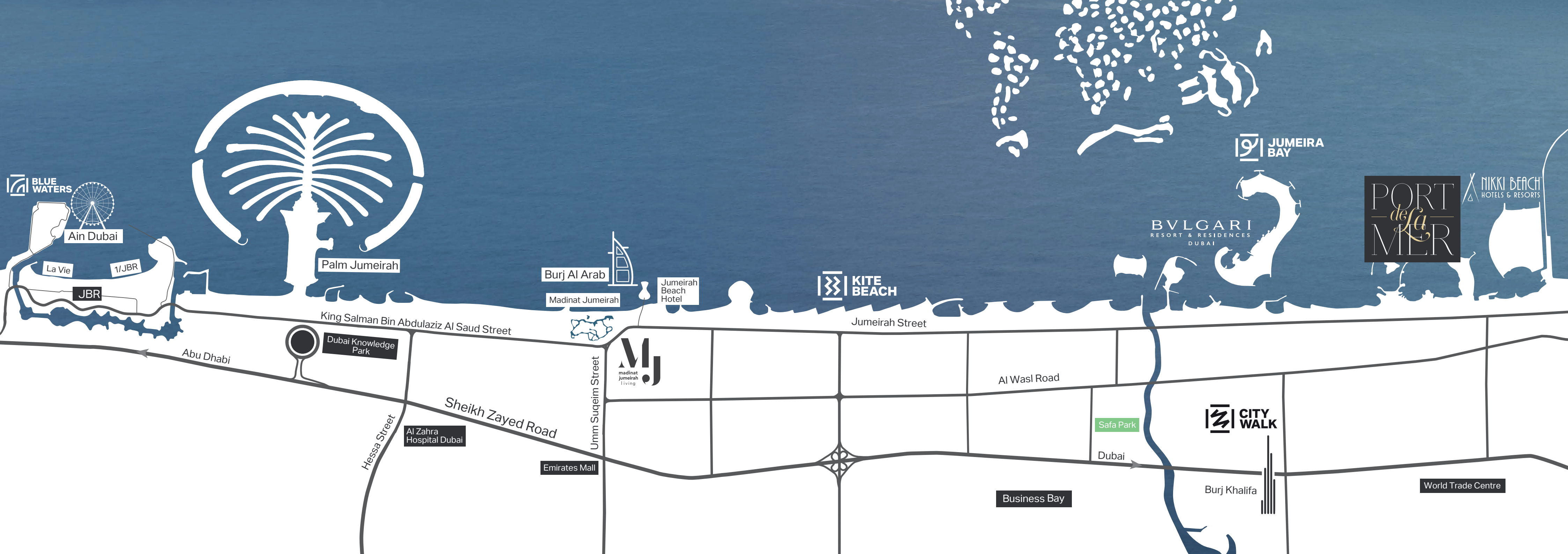


Settling down in Port de La Mer will change more than just where you live. It will change how you live. The glimmering sea, pristine beach, a buzzing marina within a picturesque community are more than enough to inspire you to get up every morning and ask yourself - what lies on the horizon today?

MERAAS

Our sophisticated design aims to connect diverse personalities who have a vast variety of preferences, at some of Dubai's most sought-after addresses. From cutting-edge waterfront properties to contemporary family-friendly communities, our residences at iconic locations such as City Walk, Bluewaters, Jumeira Bay, Pearl Jumeira, and La Mer stimulate a creative and cutting-edge culture. Meraas' continuing investment in innovation is ensuring a better, more prosperous future for generations to come.





BLUE WATERS
Ain Dubai
 La Vie
 1/JBR
JBR



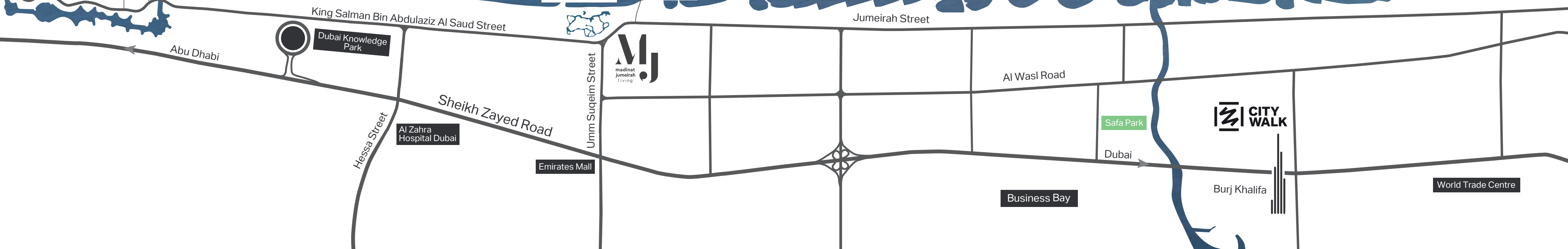
Burj Al Arab
 Madinat Jumeirah
 Jumeirah Beach Hotel



BVLGARI
 RESORT & RESIDENCES
 DUBAI

PORT de la MER

NIKKI BEACH
 HOTELS & RESORTS





LA MER

Set within the prestigious Jumeirah 1 district, La Mer is an inspirational beachfront destination. With fresh contemporary design, it boasts premium dining, shopping, entertainment, leisure and hospitality experiences along 2.5 kilometres of pristine beaches.

The residential communities here benefit from excellent connectivity to the city's most popular attractions, and easy accessibility to Dubai's international airports.

CONNECTIVITY

Port de La Mer is easily accessible from all major road links. Located within La Mer and only minutes away from City Walk, this seaside destination has everything one could desire within close vicinity. Dubai International Airport is only a short drive away, and for those who enjoy the glitz and glamour of the city, shopping, leisure and dining experiences are also at your doorstep.



5 MINUTES
to La Mer



10 MINUTES
to City Walk



10 MINUTES
to Downtown Dubai



15 MINUTES
to Dubai
International Airport



45 MINUTES
to Al Maktoum
International Airport





PORT DE LA MER

Inspired by the charm of the Mediterranean, Port de La Mer offers panoramic views of the open water and Dubai skyline. The residences blend vintage architecture and contemporary interior design while being surrounded by coastal waters, offering a vibrant yet laid-back seaside life.



AMENITIES

Port de La Mer boasts premium amenities in stunning settings. Its bridges connect the different spaces together, from bustling piazzas to its inviting open spaces, all of which surround its central podium. Restaurants, hotels, and retail outlets along the waterfront further infuse energy and vitality into life at Port de La Mer. Visitors and residents here can indulge in:



+190 Berth Marina
and Yacht Club



5-STAR
Hospitality
Experiences



Magnificent
Swimming Pools



Seaside and Marina
Promenades



Private Landscaped
Terraces



Cafes and
Restaurants

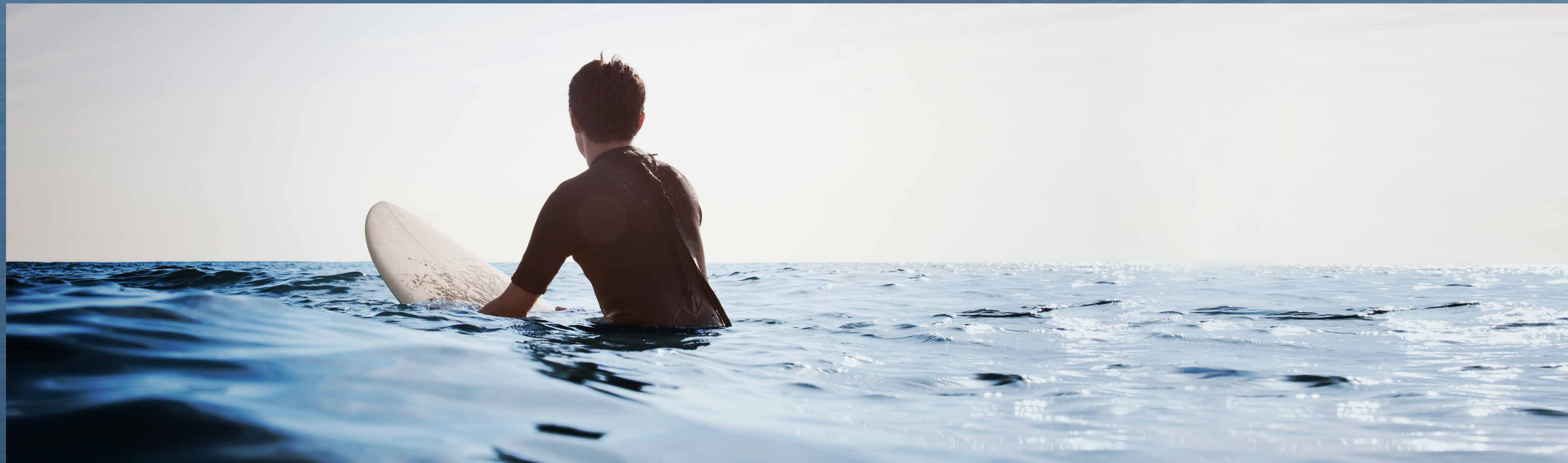


Beach Access



Private Facilities
and Amenities





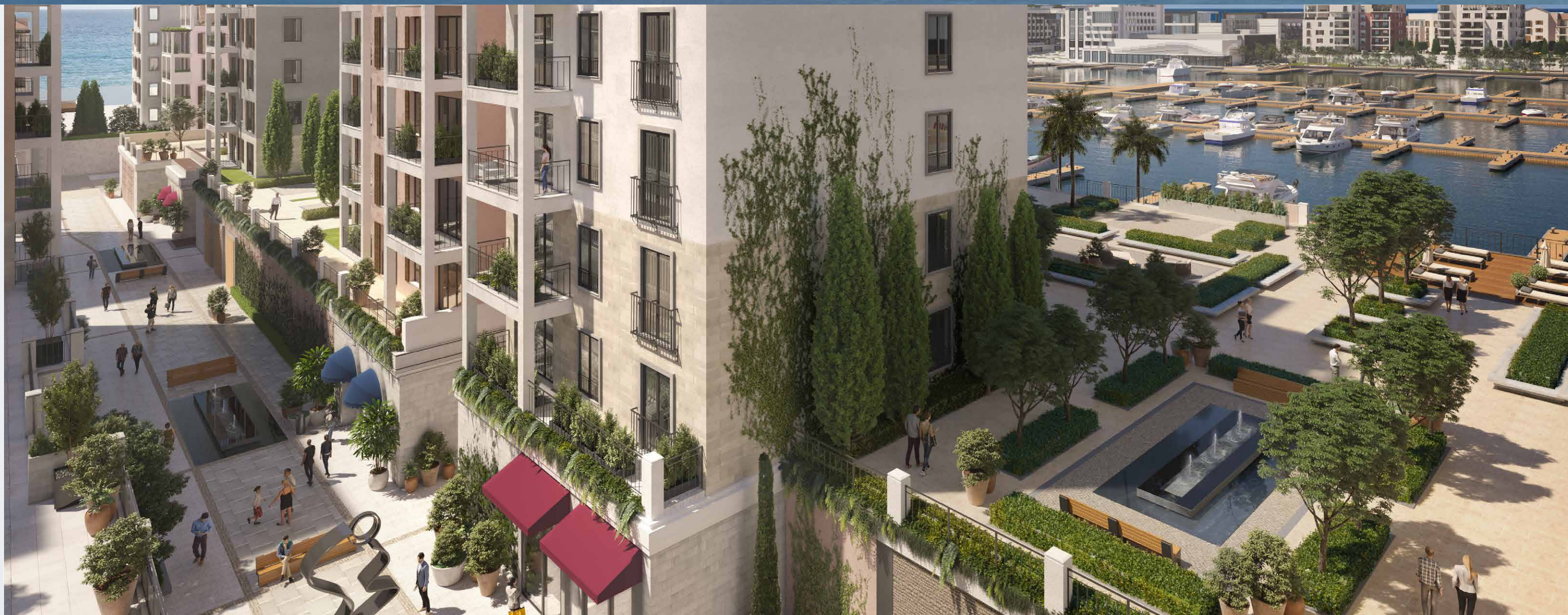


LA SIRÈNE

Live on the edge of Dubai's pristine coastline, embrace a Mediterranean inspired seaside lifestyle and discover there's so much more to life when you keep looking towards the horizon.

The latest addition to Port de La Mer, La Sirène, comprises of an exclusive selection of 1, 2, 3 and 4-bedroom apartments and a 6-bedroom duplex, offering views unlike any other. Savour open seas, beaches, boardwalks, cafes - the more you discover, the more you can imagine and appreciate the endless possibilities of living in La Sirène at Port de La Mer.

**CHARMING
WALKWAYS
CONNECTING
THE COMMUNITY**





**UNIQUE
MARINA
PROMENADE
AND EASY
GOING
LIFESTYLE**

**PREMIUM
AMENITIES
IN STUNNING
SETTINGS BY
THE SEA**

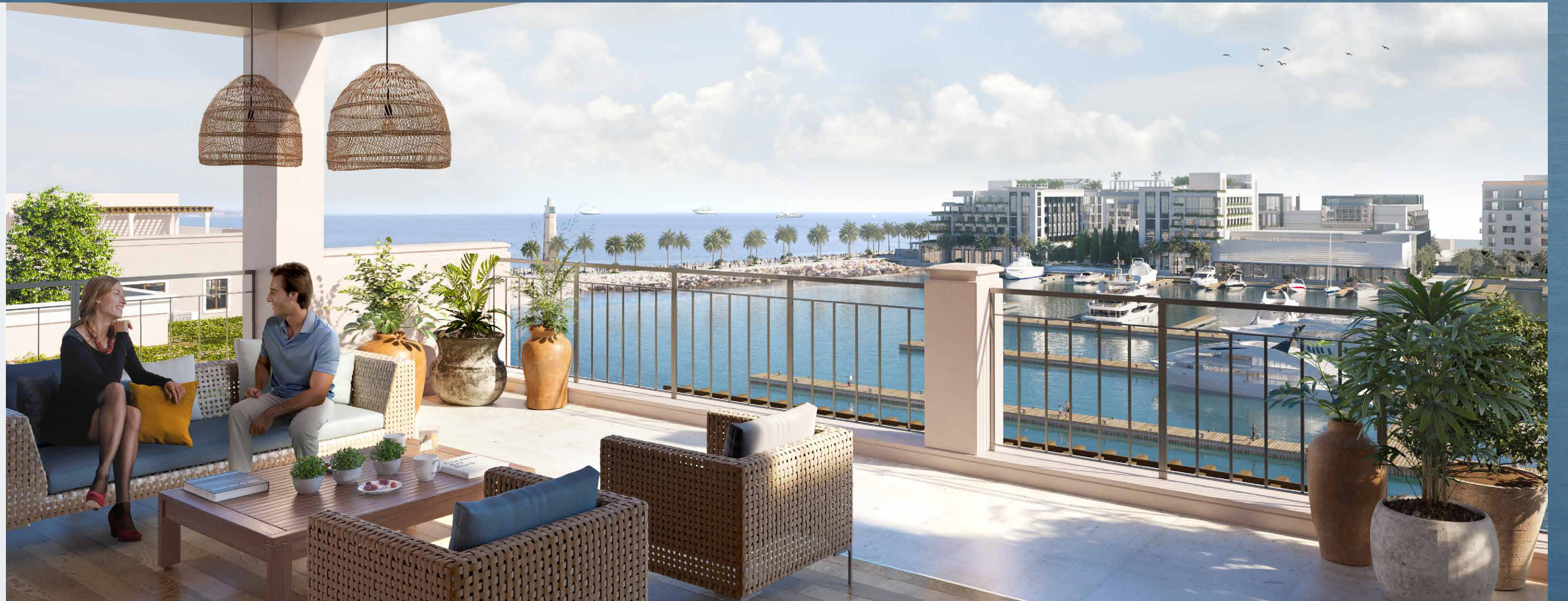






**MEDITERRANEAN
INSPIRED
ARCHITECTURE**

**A ONE-OF-A-
KIND ISLAND
RETREAT
WITHIN THE
CITY**





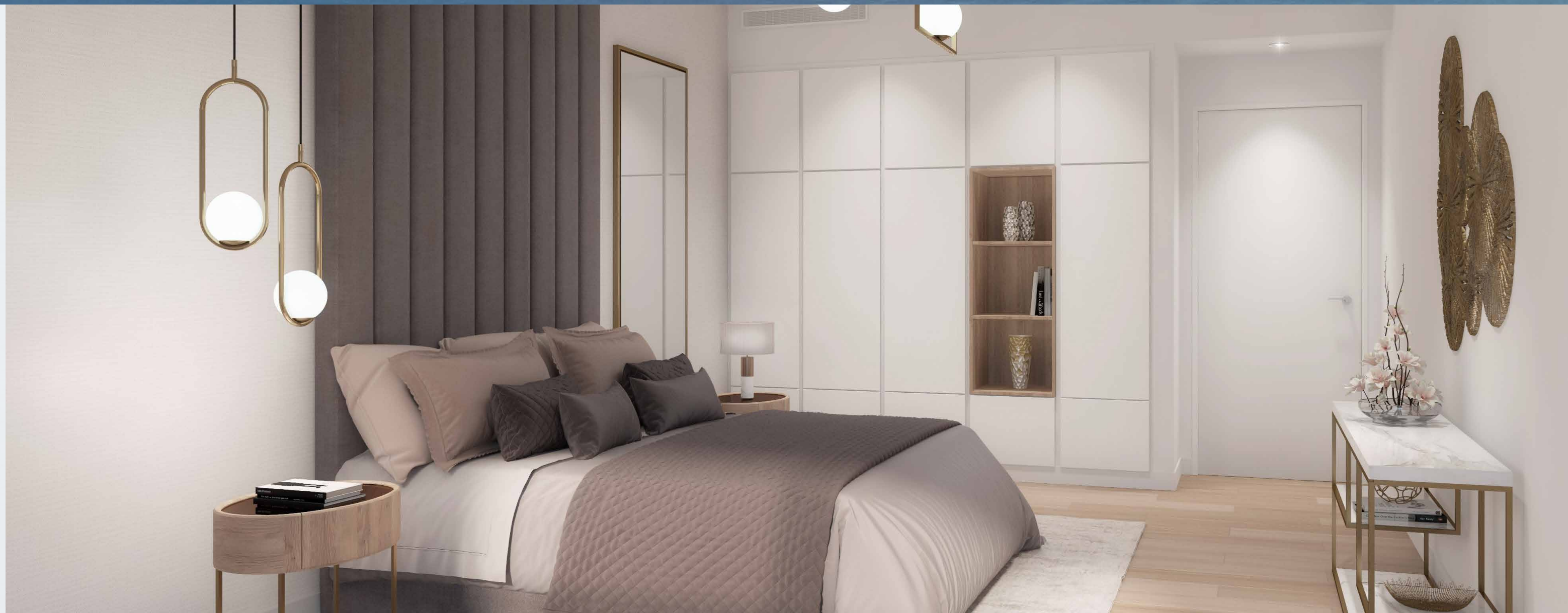
**CUTTING EDGE
FACILITIES
AT YOUR
DOORSTEP**





**FLOWING
INTERIOR
SPACES AND
PRIVATE
QUARTERS**

**MAJESTIC
FINISHES WITH
ATTENTION TO
DETAIL**





**SPACIOUS
LAYOUTS FOR
A WELCOMING
ATMOSPHERE**

MASTER PLAN

LEGEND

- C** LA COTE
- R** LA RIVE
- P** LE PONT
- V** LA VOILE
- S** LA SIRENE
- H** HOTELS
- ▲** LA MER & PDLM ENTRIES
- ▲** BEACH ACCESS
- 1** BEACH
- 2** MARINA
- 3** YACHT CLUB
- 4** SUR LA MER
- 5** LAGUNA WATER PARK
- 6** LA MER BEACH
- 7** RESTAURANTS & RETAIL
- 8** DUBAI MARINE RESORT
- 9** PALM STRIP MALL
- 10** JUMEIRAH MOSQUE
- 11** JUMEIRAH CENTRE
- 12** THE VILLAGE MALL
- 13** JUMEIRAH PLAZA
- 14** CENTURY PLAZA

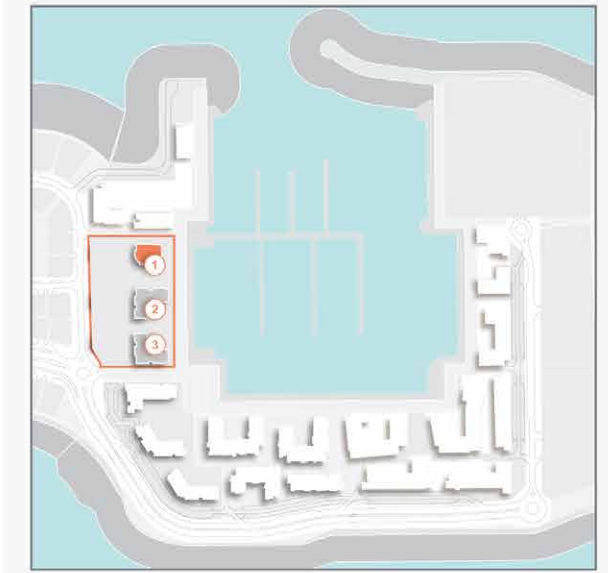
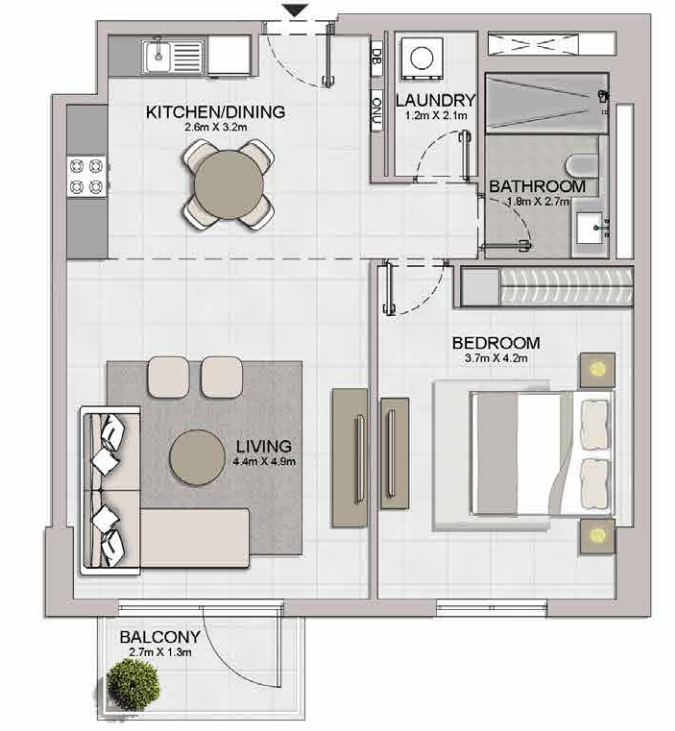
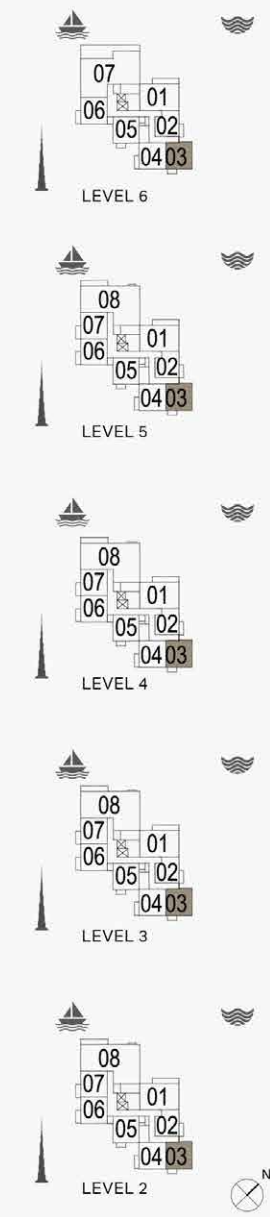


FLOOR PLANS

BUILDING 1

PORT DE LA MER
La Sirène

1 BEDROOM APARTMENT TYPE 1
BUILDING 1 - LEVEL 2, 3, 4, 5, 6

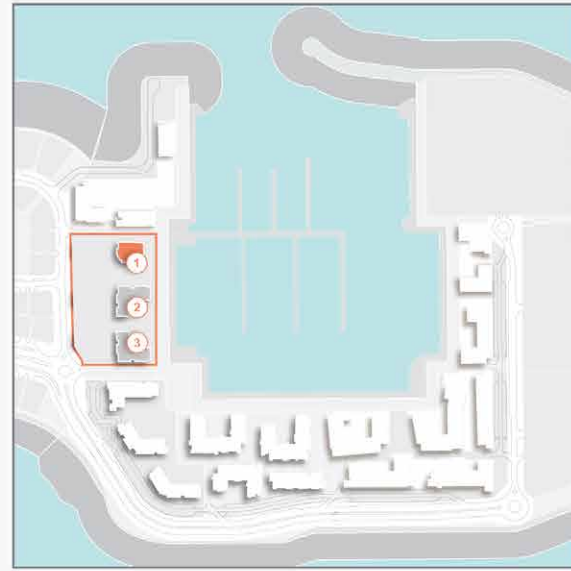


UNIT NO.			SUITE AREA		BALCONY AREA		TOTAL AREA	
			SQM	SQFT	SQM	SQFT	SQM	SQFT
203	303	403	69.05	743.25	4.52	48.65	73.57	791.90
503	603							

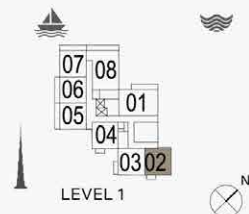
Disclaimer: Plans, details and unit orientation included are indicative only and are subject to change by the developer/seller at its sole discretion without notice and/or liability. All images, including features, finishes, furnishings, view and scale are illustrative only. Final areas, orientation, dimensions, layout and materials may differ from those stated.

PORT DE LA MER
La Sirène

1 BEDROOM APARTMENT TYPE 1A
BUILDING 1 - LEVEL 1



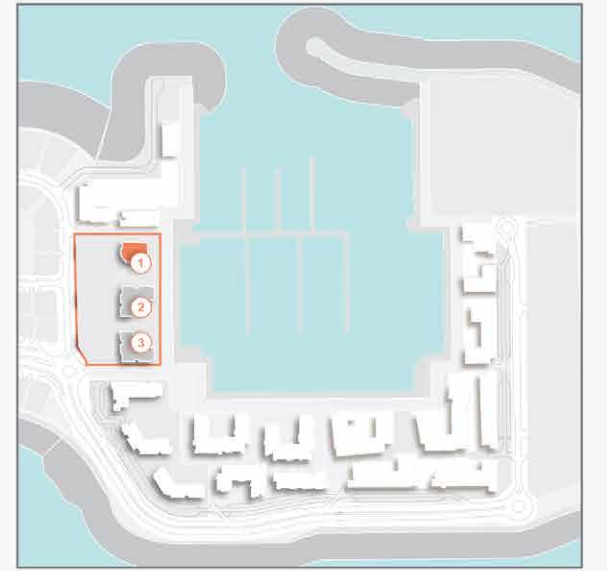
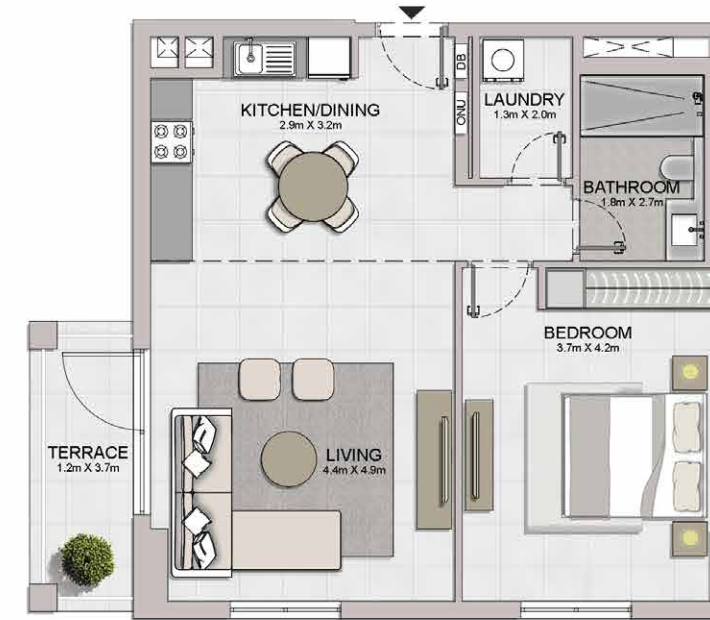
UNIT NO.	SUITE AREA		BALCONY AREA		TOTAL AREA	
	SQM	SQFT	SQM	SQFT	SQM	SQFT
102	69.05	743.25	4.52	48.65	73.57	791.90



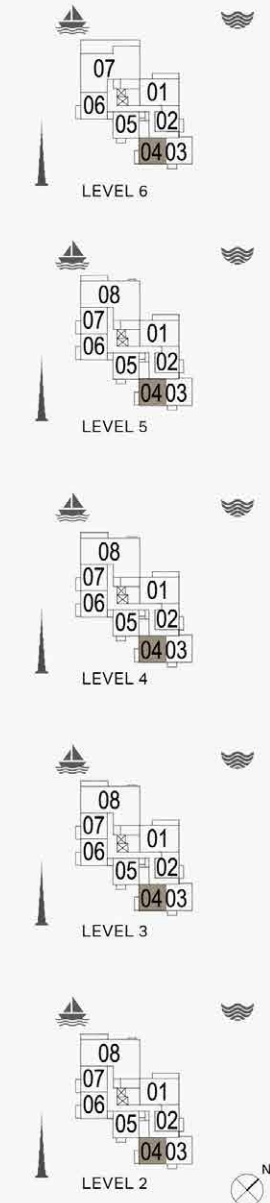
Disclaimer: Plans, details and unit orientation included are indicative only and are subject to change by the developer/seller at its sole discretion without notice and/or liability. All images, including features, finishes, furnishings, view and scale are illustrative only. Final areas, orientation, dimensions, layout and materials may differ from those stated.

PORT DE LA MER
La Sirène

1 BEDROOM APARTMENT TYPE 2
BUILDING 1 - LEVEL 2, 3, 4, 5, 6



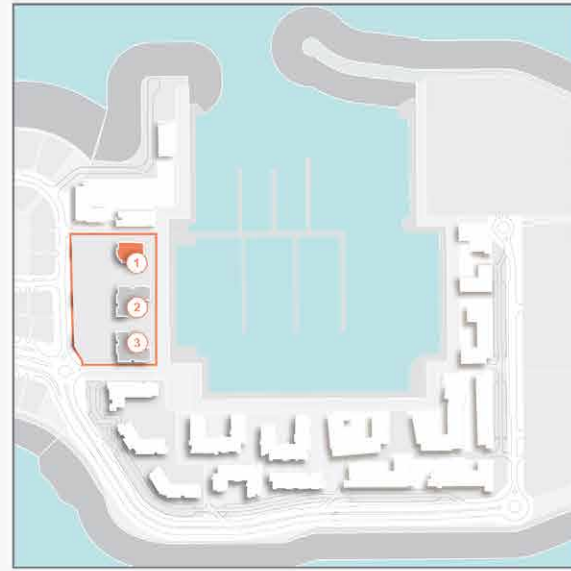
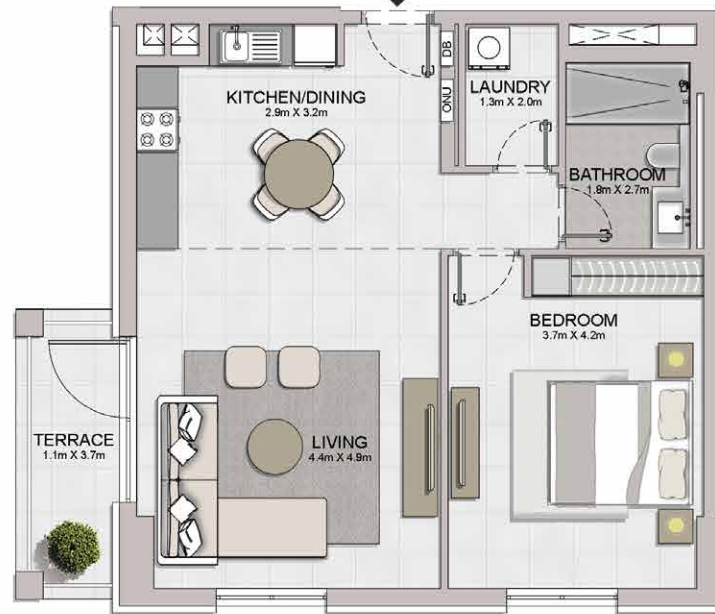
UNIT NO.	SUITE AREA		BALCONY AREA		TOTAL AREA	
	SQM	SQFT	SQM	SQFT	SQM	SQFT
204 304 404	68.99	742.60	5.55	59.74	74.54	802.34
504 604						



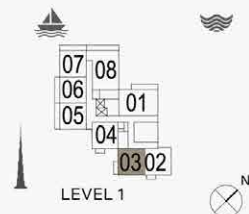
Disclaimer: Plans, details and unit orientation included are indicative only and are subject to change by the developer/seller at its sole discretion without notice and/or liability. All images, including features, finishes, furnishings, view and scale are illustrative only. Final areas, orientation, dimensions, layout and materials may differ from those stated.

PORT DE LA MER
La Sirène

1 BEDROOM APARTMENT TYPE 2A
BUILDING 1 - LEVEL 1



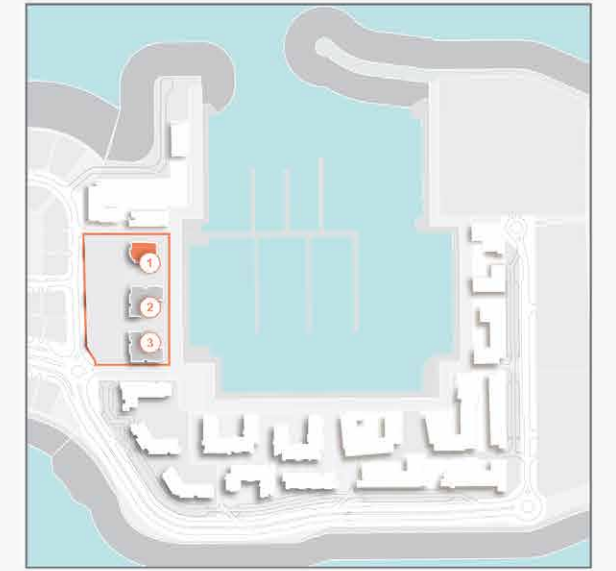
UNIT NO.	SUITE AREA		BALCONY AREA		TOTAL AREA	
	SQM	SQFT	SQM	SQFT	SQM	SQFT
103	68.99	742.60	5.55	59.74	74.54	802.34



Disclaimer: Plans, details and unit orientation included are indicative only and are subject to change by the developer/seller at its sole discretion without notice and/or liability. All images, including features, finishes, furnishings, view and scale are illustrative only. Final areas, orientation, dimensions, layout and materials may differ from those stated.

PORT DE LA MER
La Sirène

1 BEDROOM APARTMENT TYPE 3
BUILDING 1 - LEVEL 2, 3, 4, 5, 6



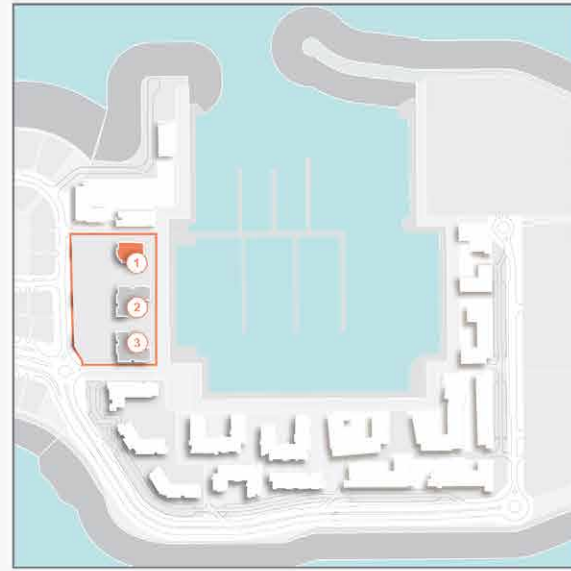
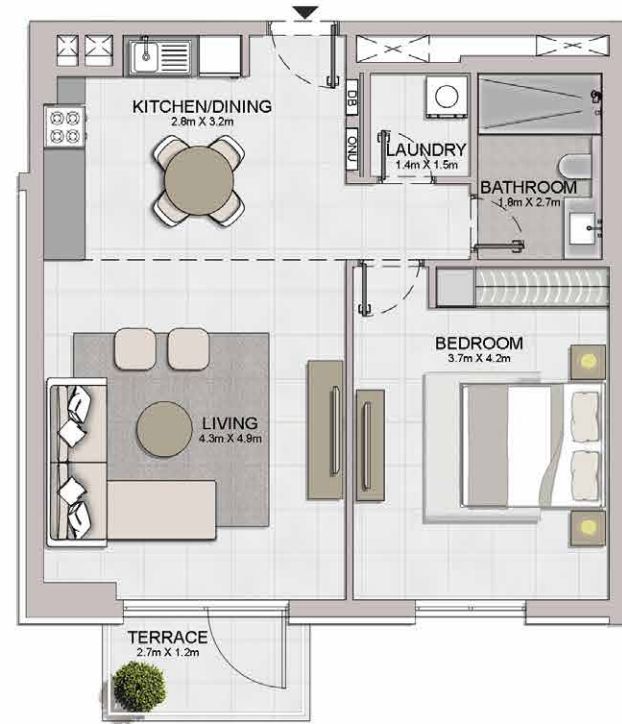
UNIT NO.	SUITE AREA		BALCONY AREA		TOTAL AREA	
	SQM	SQFT	SQM	SQFT	SQM	SQFT
205 305 405	68.05	732.49	4.52	48.65	72.57	781.14
505 605						



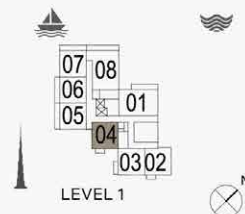
Disclaimer: Plans, details and unit orientation included are indicative only and are subject to change by the developer/seller at its sole discretion without notice and/or liability. All images, including features, finishes, furnishings, view and scale are illustrative only. Final areas, orientation, dimensions, layout and materials may differ from those stated.

PORT DE LA MER
La Sirène

1 BEDROOM APARTMENT TYPE 3A
BUILDING 1 - LEVEL 1



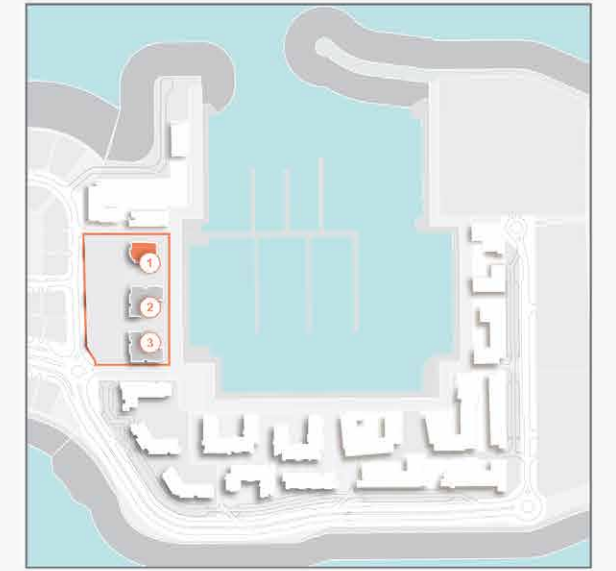
UNIT NO.	SUITE AREA		BALCONY AREA		TOTAL AREA	
	SQM	SQFT	SQM	SQFT	SQM	SQFT
104	68.05	732.49	4.52	48.65	72.57	781.14



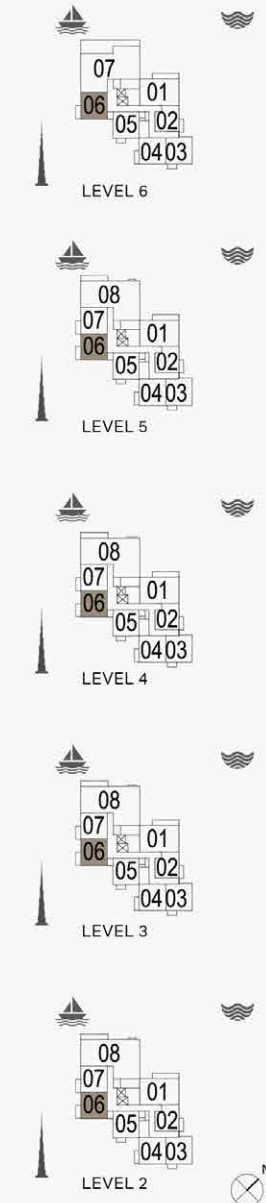
Disclaimer: Plans, details and unit orientation included are indicative only and are subject to change by the developer/seller at its sole discretion without notice and/or liability. All images, including features, finishes, furnishings, view and scale are illustrative only. Final areas, orientation, dimensions, layout and materials may differ from those stated.

PORT DE LA MER
La Sirène

1 BEDROOM APARTMENT TYPE 4
BUILDING 1 - LEVEL 2, 3, 4, 5, 6



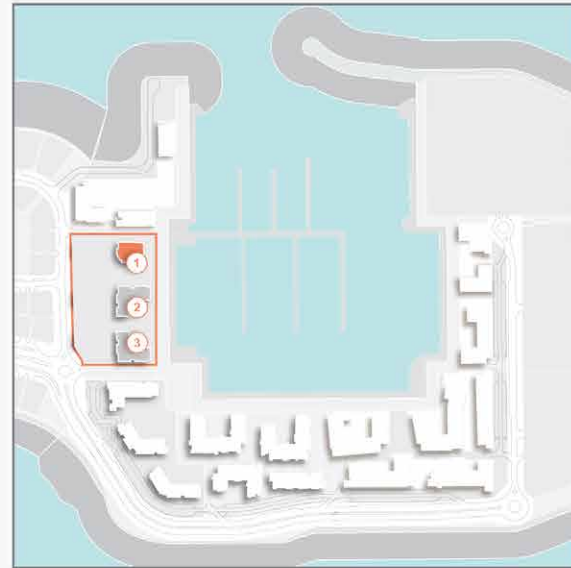
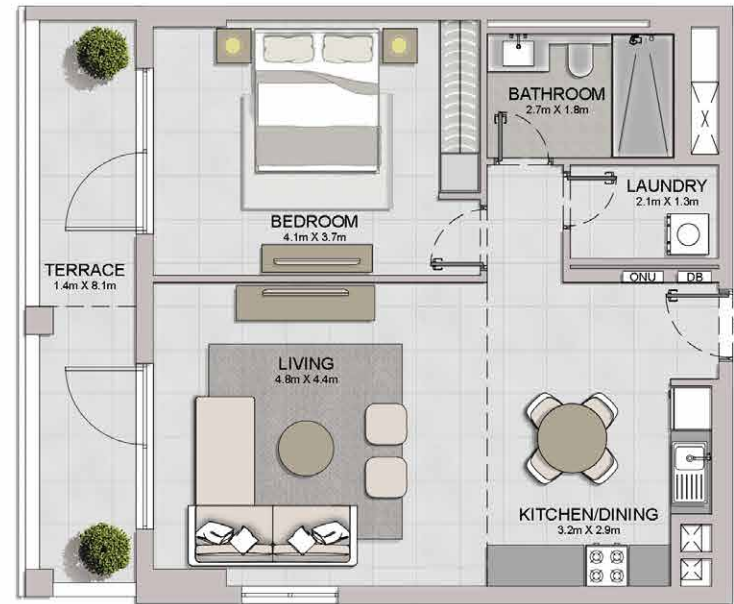
UNIT NO.	SUITE AREA		BALCONY AREA		TOTAL AREA	
	SQM	SQFT	SQM	SQFT	SQM	SQFT
206 306 406	68.47	737.01	5.93	63.83	74.40	800.84
506 606						



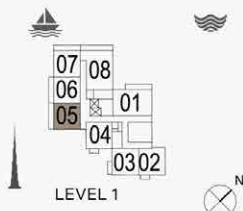
Disclaimer: Plans, details and unit orientation included are indicative only and are subject to change by the developer/seller at its sole discretion without notice and/or liability. All images, including features, finishes, furnishings, view and scale are illustrative only. Final areas, orientation, dimensions, layout and materials may differ from those stated.

PORT DE LA MER
La Sirène

1 BEDROOM APARTMENT TYPE 4A
BUILDING 1 - LEVEL 1



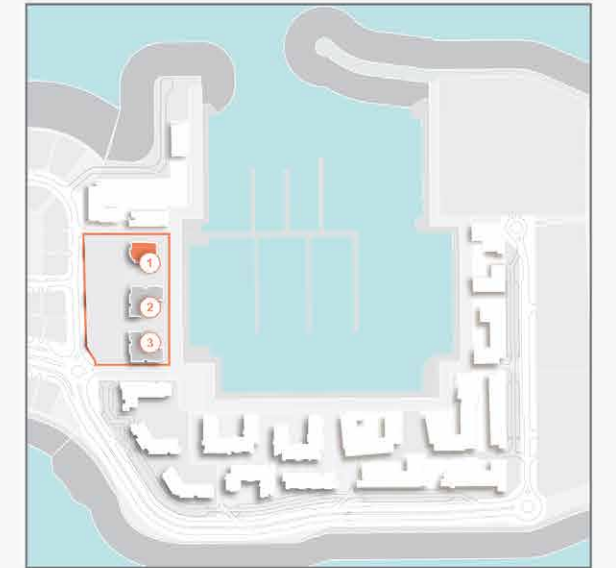
UNIT NO.	SUITE AREA		BALCONY AREA		TOTAL AREA	
	SQM	SQFT	SQM	SQFT	SQM	SQFT
105	68.33	735.50	13.84	148.97	82.17	884.47



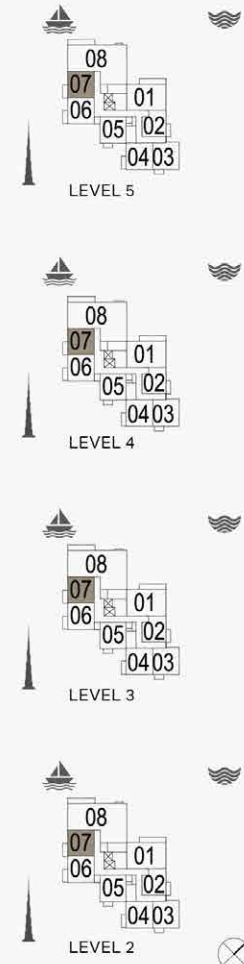
Disclaimer: Plans, details and unit orientation included are indicative only and are subject to change by the developer/seller at its sole discretion without notice and/or liability. All images, including features, finishes, furnishings, view and scale are illustrative only. Final areas, orientation, dimensions, layout and materials may differ from those stated.

PORT DE LA MER
La Sirène

1 BEDROOM APARTMENT TYPE 5
BUILDING 1 - LEVEL 2, 3, 4, 5



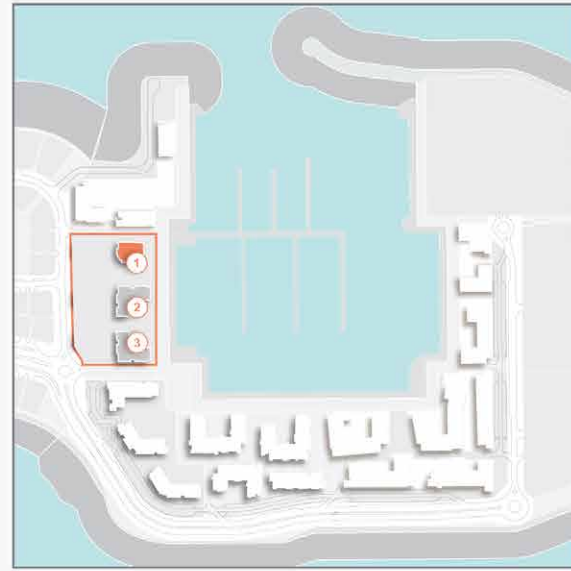
UNIT NO.	SUITE AREA		BALCONY AREA		TOTAL AREA	
	SQM	SQFT	SQM	SQFT	SQM	SQFT
207 307 407 507	68.75	740.02	6.78	72.98	75.53	813.00



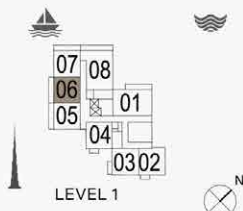
Disclaimer: Plans, details and unit orientation included are indicative only and are subject to change by the developer/seller at its sole discretion without notice and/or liability. All images, including features, finishes, furnishings, view and scale are illustrative only. Final areas, orientation, dimensions, layout and materials may differ from those stated.

PORT DE LA MER
La Sirène

1 BEDROOM APARTMENT TYPE 5A
BUILDING 1 - LEVEL 1



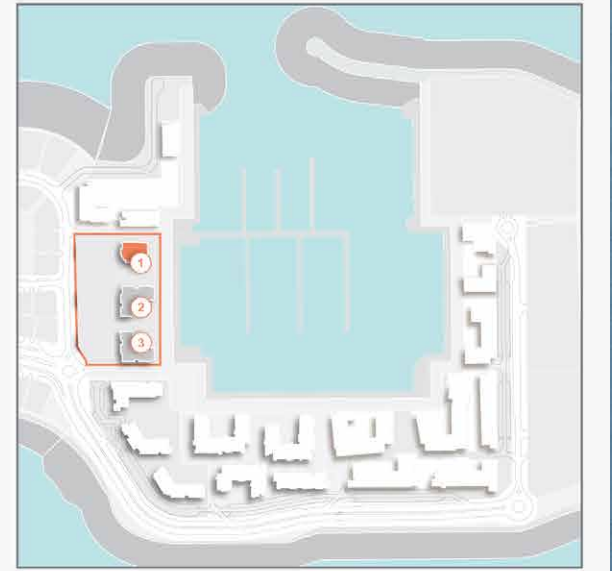
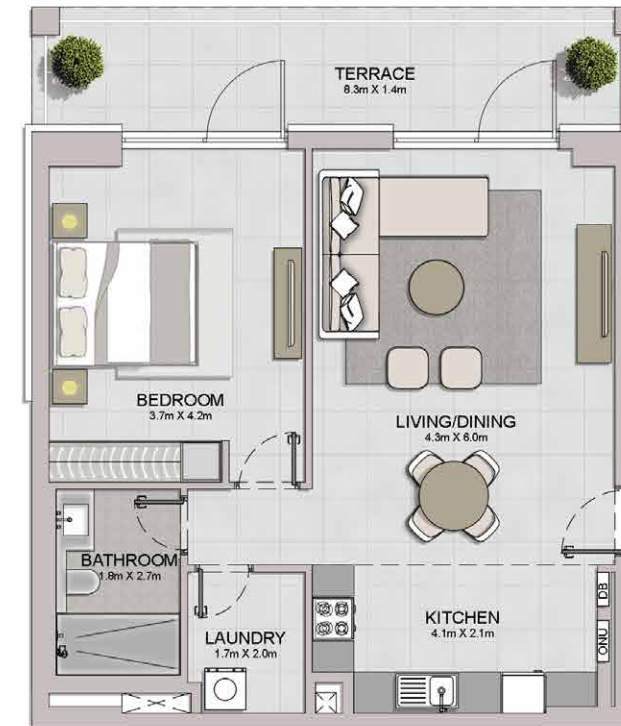
UNIT NO.	SUITE AREA		BALCONY AREA		TOTAL AREA	
	SQM	SQFT	SQM	SQFT	SQM	SQFT
106	68.61	738.51	13.75	148.00	82.36	886.52



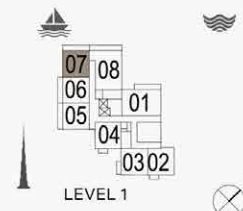
Disclaimer: Plans, details and unit orientation included are indicative only and are subject to change by the developer/seller at its sole discretion without notice and/or liability. All images, including features, finishes, furnishings, view and scale are illustrative only. Final areas, orientation, dimensions, layout and materials may differ from those stated.

PORT DE LA MER
La Sirène

1 BEDROOM APARTMENT TYPE 6
BUILDING 1 - LEVEL 1



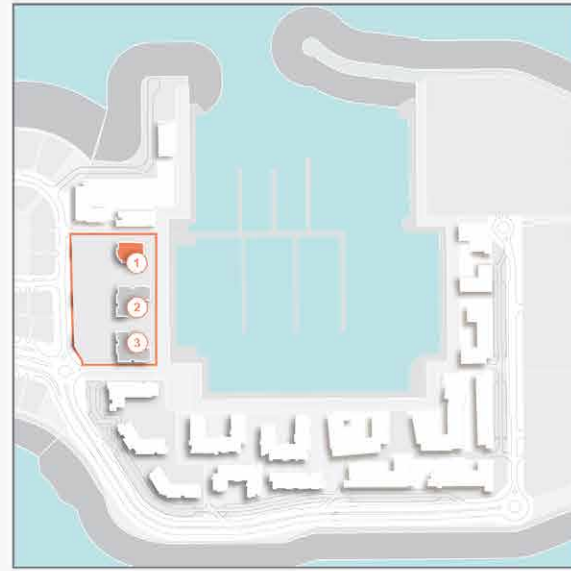
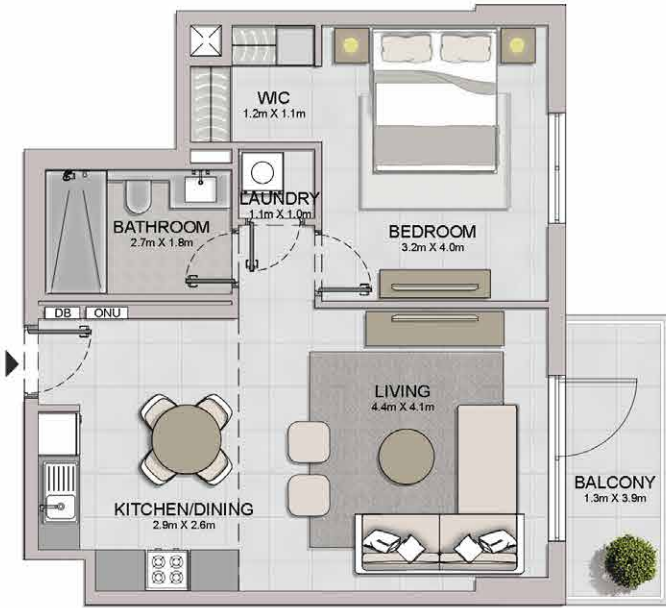
UNIT NO.	SUITE AREA		BALCONY AREA		TOTAL AREA	
	SQM	SQFT	SQM	SQFT	SQM	SQFT
107	68.88	741.42	14.80	159.31	83.68	900.73



Disclaimer: Plans, details and unit orientation included are indicative only and are subject to change by the developer/seller at its sole discretion without notice and/or liability. All images, including features, finishes, furnishings, view and scale are illustrative only. Final areas, orientation, dimensions, layout and materials may differ from those stated.

PORT DE LA MER
La Sirène

1 BEDROOM APARTMENT TYPE 7
BUILDING 1 - LEVEL 2, 3, 4, 5, 6

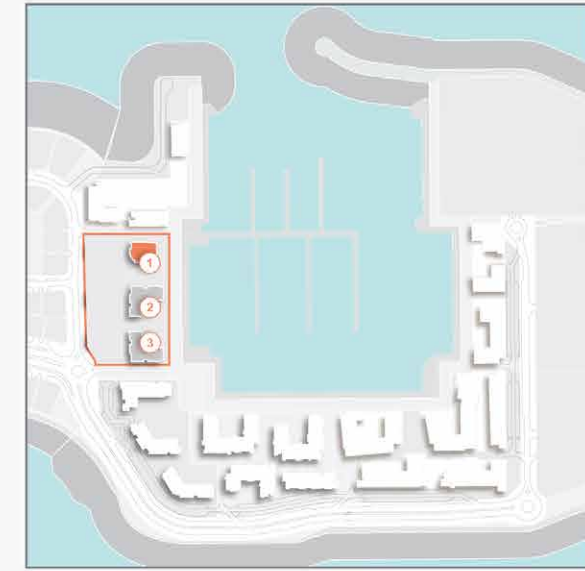
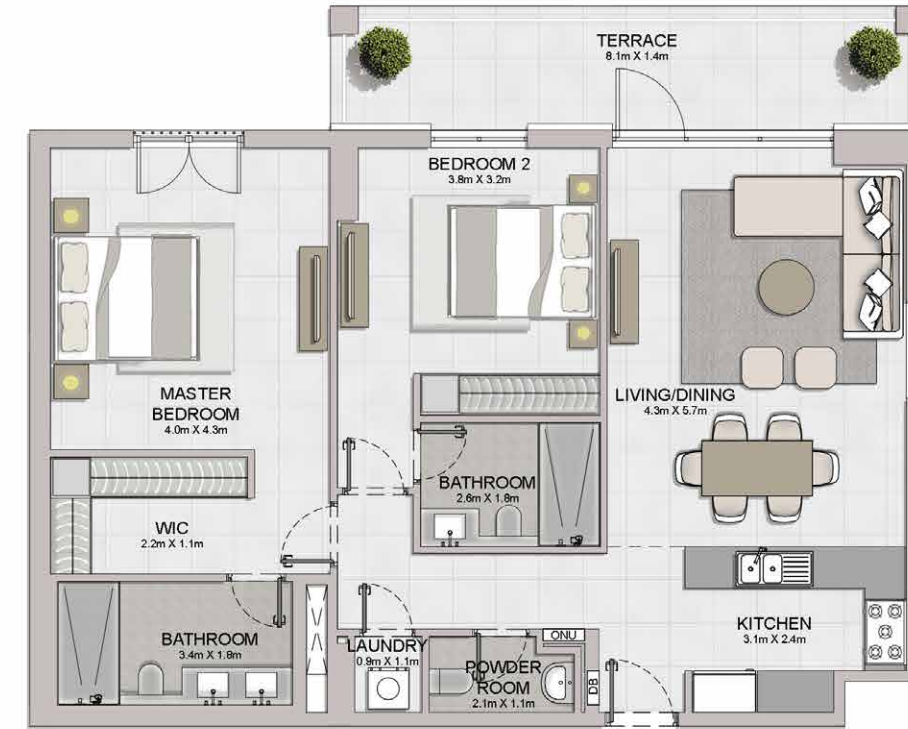
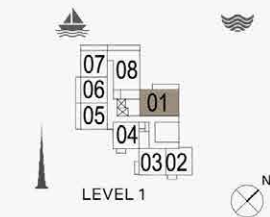


UNIT NO.	SUITE AREA		BALCONY AREA		TOTAL AREA	
	SQM	SQFT	SQM	SQFT	SQM	SQFT
202 302 402	58.31	627.65	6.37	68.57	64.68	696.21

Disclaimer: Plans, details and unit orientation included are indicative only and are subject to change by the developer/seller at its sole discretion without notice and/or liability. All images, including features, finishes, furnishings, view and scale are illustrative only. Final areas, orientation, dimensions, layout and materials may differ from those stated.

PORT DE LA MER
La Sirène

2 BEDROOM APARTMENT TYPE 1
BUILDING 1 - LEVEL 1

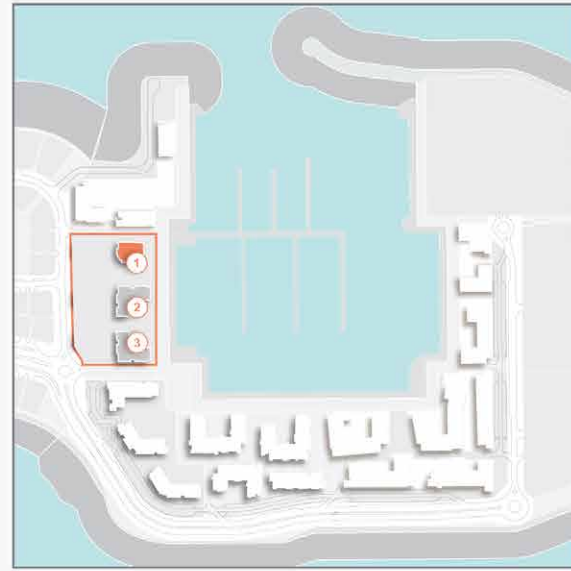
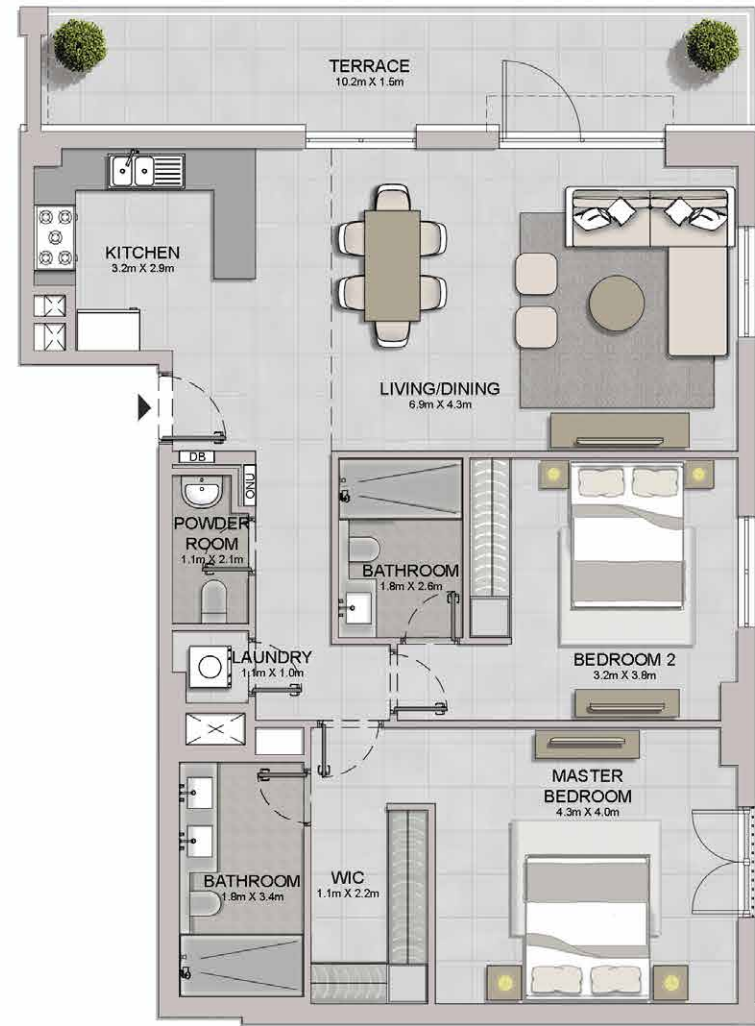


UNIT NO.	SUITE AREA		BALCONY AREA		TOTAL AREA	
	SQM	SQFT	SQM	SQFT	SQM	SQFT
101	104.52	1125.05	14.15	152.31	118.67	1277.36

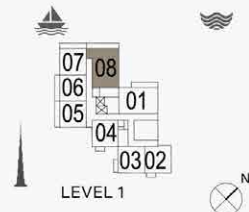
Disclaimer: Plans, details and unit orientation included are indicative only and are subject to change by the developer/seller at its sole discretion without notice and/or liability. All images, including features, finishes, furnishings, view and scale are illustrative only. Final areas, orientation, dimensions, layout and materials may differ from those stated.

PORT DE LA MER
La Sirène

2 BEDROOM APARTMENT TYPE 2
BUILDING 1 - LEVEL 1



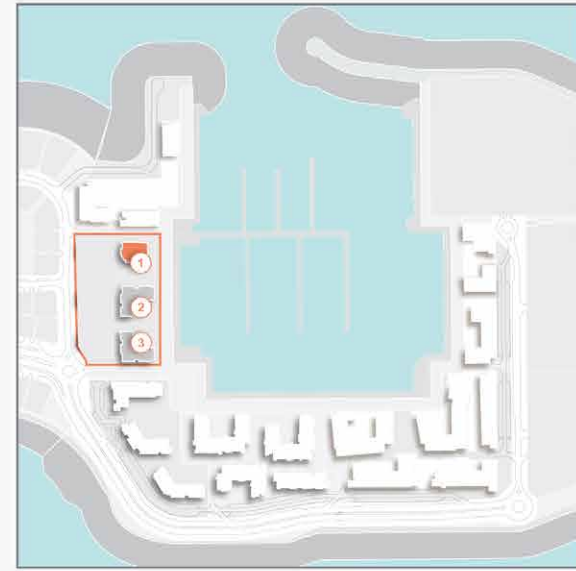
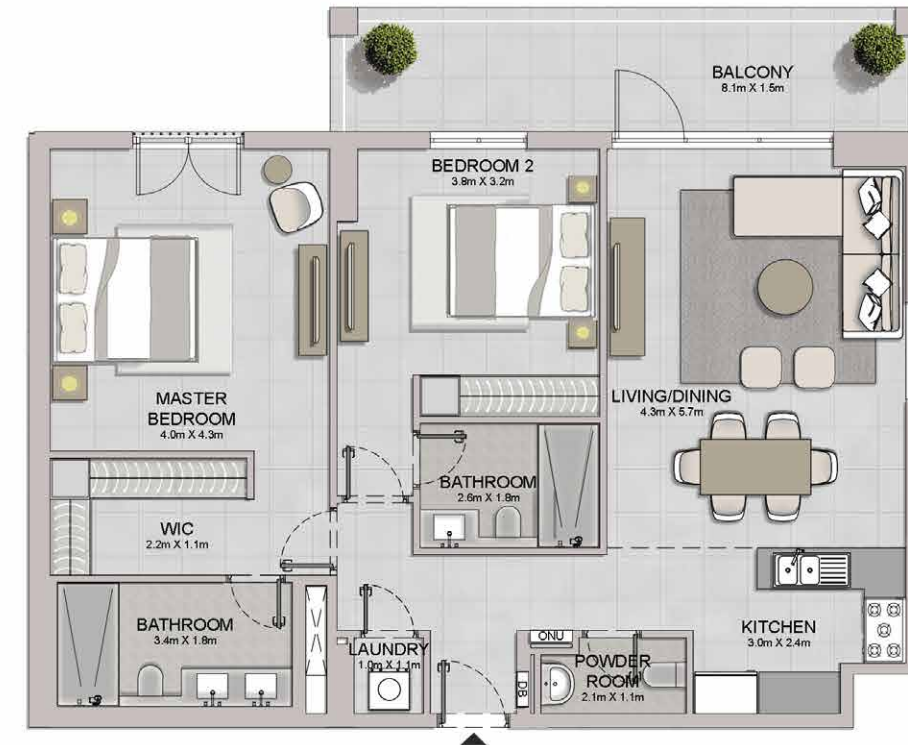
UNIT NO.	SUITE AREA		BALCONY AREA		TOTAL AREA	
	SQM	SQFT	SQM	SQFT	SQM	SQFT
108	111.03	1195.12	19.22	206.88	130.25	1402.00



Disclaimer: Plans, details and unit orientation included are indicative only and are subject to change by the developer/seller at its sole discretion without notice and/or liability. All images, including features, finishes, furnishings, view and scale are illustrative only. Final areas, orientation, dimensions, layout and materials may differ from those stated.

PORT DE LA MER
La Sirène

2 BEDROOM APARTMENT TYPE 3
BUILDING 1 - LEVEL 2, 3, 4, 5, 6

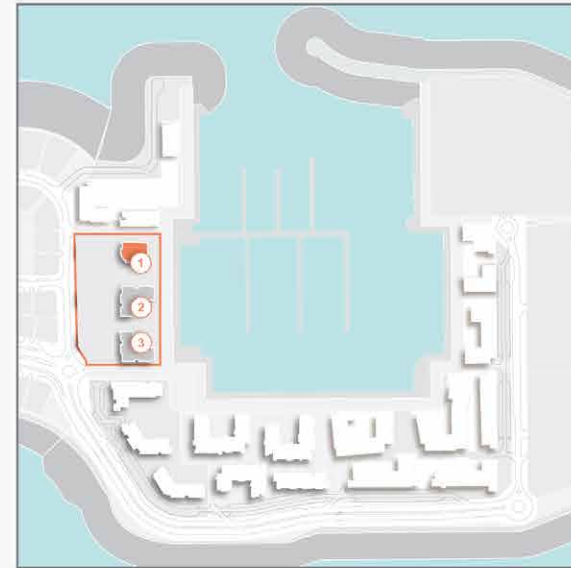
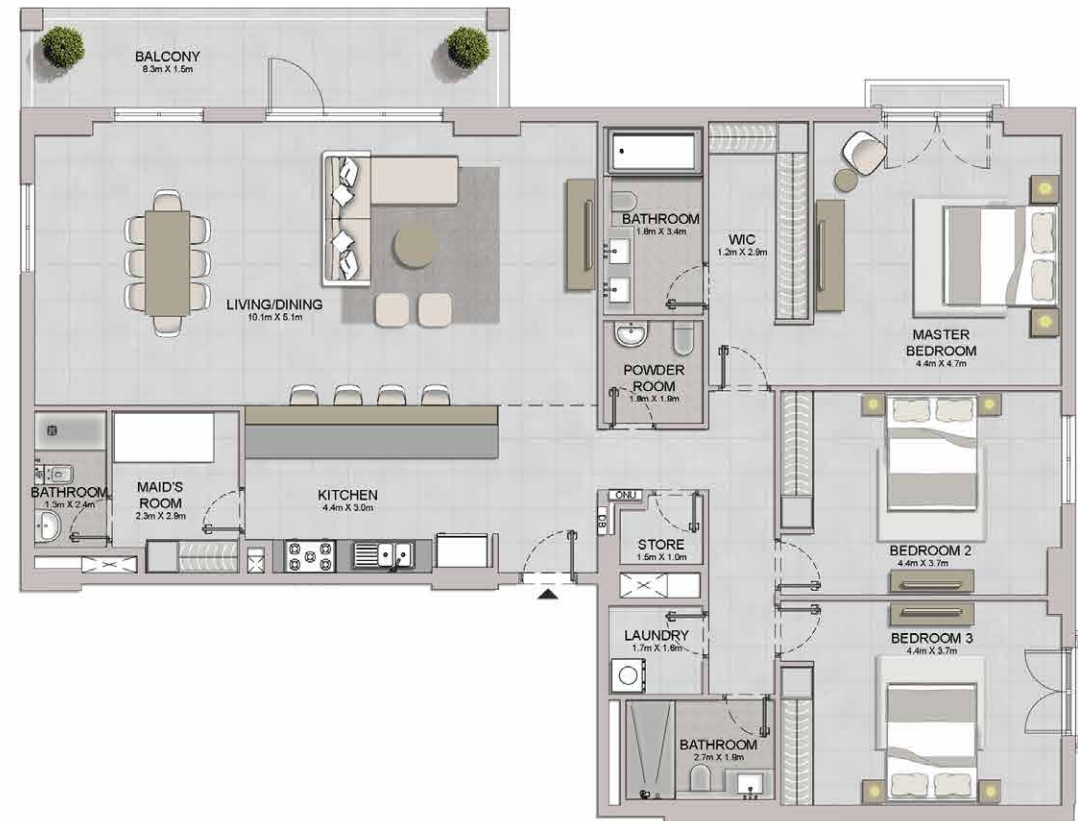
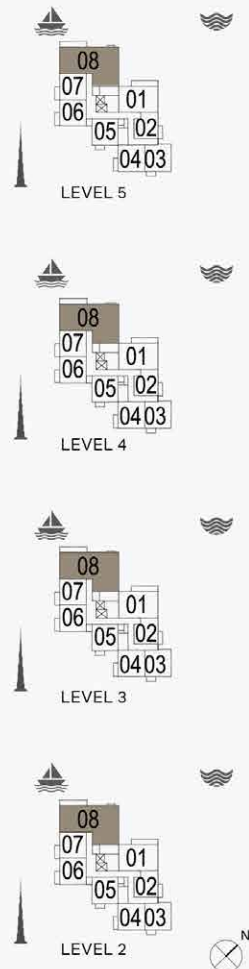


UNIT NO.	SUITE AREA		BALCONY AREA		TOTAL AREA	
	SQM	SQFT	SQM	SQFT	SQM	SQFT
201 301 401	104.53	1125.16	14.15	152.31	118.68	1277.47
501 601						

Disclaimer: Plans, details and unit orientation included are indicative only and are subject to change by the developer/seller at its sole discretion without notice and/or liability. All images, including features, finishes, furnishings, view and scale are illustrative only. Final areas, orientation, dimensions, layout and materials may differ from those stated.

PORT DE LA MER
La Sirène

3 BEDROOM APARTMENT TYPE 1
BUILDING 1 - LEVEL 2, 3, 4, 5

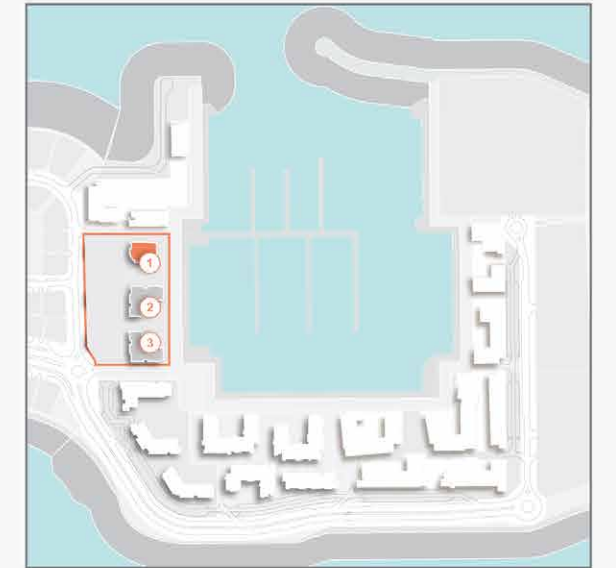
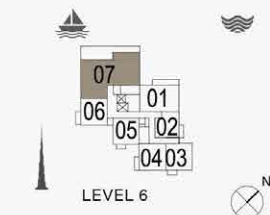


UNIT NO.	SUITE AREA		BALCONY AREA		TOTAL AREA	
	SQM	SQFT	SQM	SQFT	SQM	SQFT
208 308 408	191.11	2057.10	16.01	172.33	207.12	2229.43

Disclaimer: Plans, details and unit orientation included are indicative only and are subject to change by the developer/seller at its sole discretion without notice and/or liability. All images, including features, finishes, furnishings, view and scale are illustrative only. Final areas, orientation, dimensions, layout and materials may differ from those stated.

PORT DE LA MER
La Sirène

6 BEDROOM APARTMENT TYPE 1
BUILDING 1 - LEVEL 6

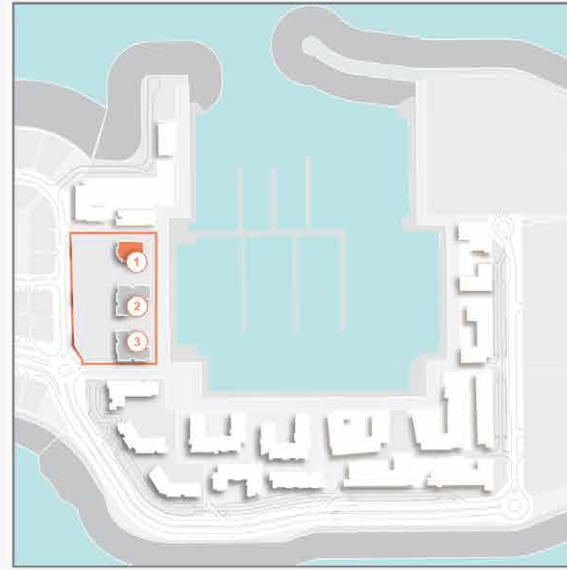


UNIT NO.	SUITE AREA		BALCONY AREA		TOTAL AREA	
	SQM	SQFT	SQM	SQFT	SQM	SQFT
607	543.08	5845.69	208.09	2239.87	751.17	8085.56

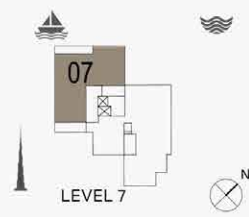
Disclaimer: Plans, details and unit orientation included are indicative only and are subject to change by the developer/seller at its sole discretion without notice and/or liability. All images, including features, finishes, furnishings, view and scale are illustrative only. Final areas, orientation, dimensions, layout and materials may differ from those stated.

PORT DE LA MER
La Sirène

6 BEDROOM
BUILDING 1 - LEVEL 7



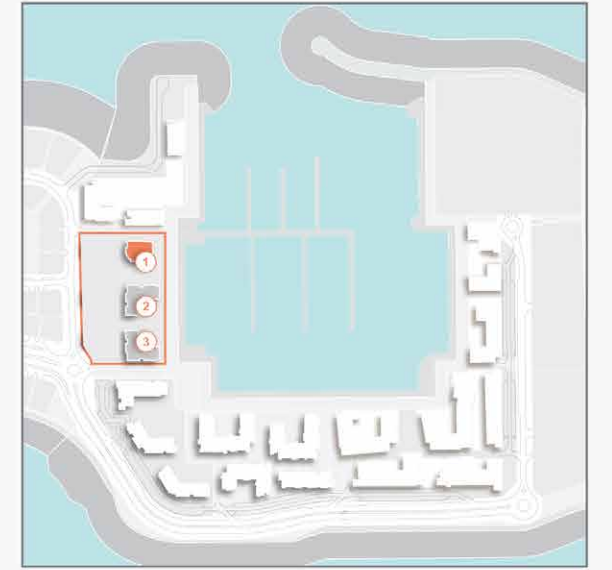
UNIT NO.	SUITE AREA		BALCONY AREA		TOTAL AREA	
	SQM	SQFT	SQM	SQFT	SQM	SQFT
607	543.08	5845.69	208.09	2239.87	751.17	8085.56



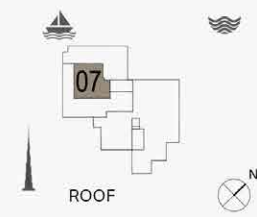
Disclaimer: Plans, details and unit orientation included are indicative only and are subject to change by the developer/seller at its sole discretion without notice and/or liability. All images, including features, finishes, furnishings, view and scale are illustrative only. Final areas, orientation, dimensions, layout and materials may differ from those stated.

PORT DE LA MER
La Sirène

6 BEDROOM
BUILDING 1 - LEVEL ROOF



UNIT NO.	SUITE AREA		BALCONY AREA		TOTAL AREA	
	SQM	SQFT	SQM	SQFT	SQM	SQFT
607	543.08	5845.69	208.09	2239.87	751.17	8085.56



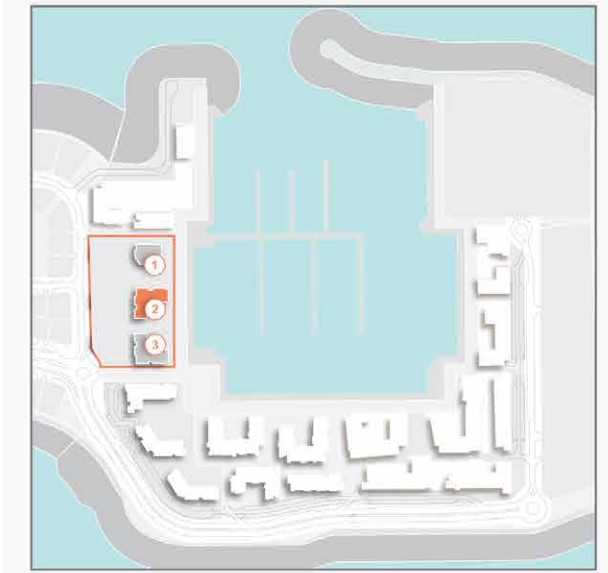
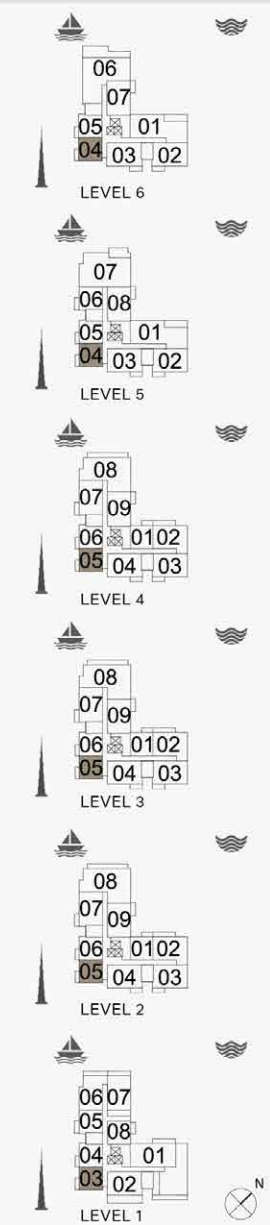
Disclaimer: Plans, details and unit orientation included are indicative only and are subject to change by the developer/seller at its sole discretion without notice and/or liability. All images, including features, finishes, furnishings, view and scale are illustrative only. Final areas, orientation, dimensions, layout and materials may differ from those stated.

FLOOR PLANS

BUILDING 2

PORT DE LA MER
La Sirène

1 BEDROOM
BUILDING 2 - APARTMENT TYPE 1
LEVEL 1, 2, 3, 4, 5, 6

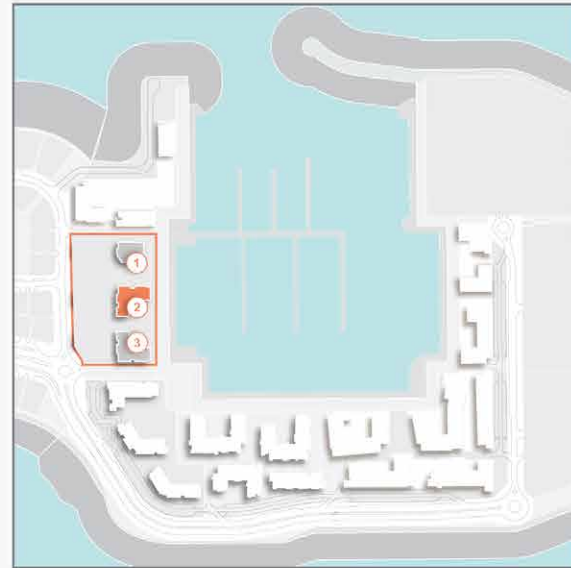


UNIT NO.	SUITE AREA		BALCONY AREA		TOTAL AREA			
	SQM	SQFT	SQM	SQFT	SQM	SQFT		
103								
205	305	405	68.53	737.65	5.55	59.74	74.08	797.39
504	604							

Disclaimer: Plans, details and unit orientation included are indicative only and are subject to change by the developer/seller at its sole discretion without notice and/or liability. All images, including features, finishes, furnishings, view and scale are illustrative only. Final areas, orientation, dimensions, layout and materials may differ from those stated.

PORT DE LA MER
La Sirène

1 BEDROOM APARTMENT TYPE 2
BUILDING 2 - LEVEL 1, 2, 3, 4, 5, 6

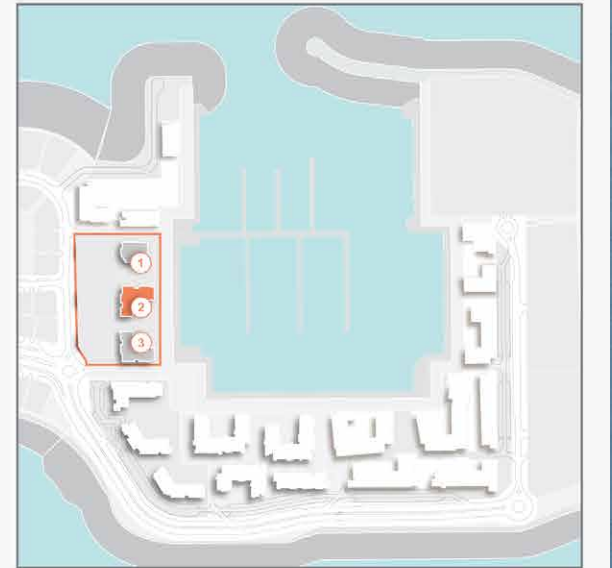
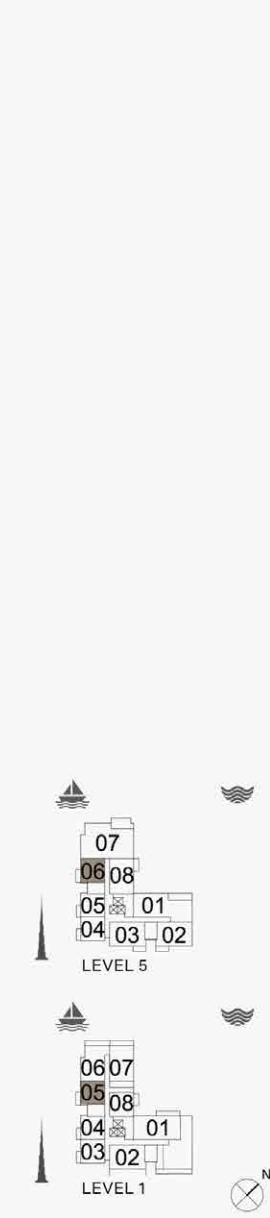


UNIT NO.	SUITE AREA		BALCONY AREA		TOTAL AREA	
	SQM	SQFT	SQM	SQFT	SQM	SQFT
104 206 306	69.10	743.79	5.55	59.74	74.65	803.53
406 505 605						

Disclaimer: Plans, details and unit orientation included are indicative only and are subject to change by the developer/seller at its sole discretion without notice and/or liability. All images, including features, finishes, furnishings, view and scale are illustrative only. Final areas, orientation, dimensions, layout and materials may differ from those stated.

PORT DE LA MER
La Sirène

1 BEDROOM APARTMENT TYPE 3
BUILDING 2 - LEVEL 1, 5

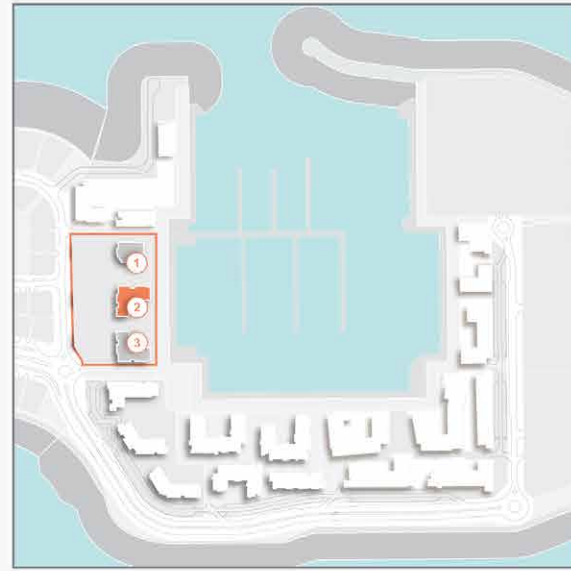


UNIT NO.	SUITE AREA		BALCONY AREA		TOTAL AREA	
	SQM	SQFT	SQM	SQFT	SQM	SQFT
105 506	69.39	746.91	7.38	79.44	76.77	826.35

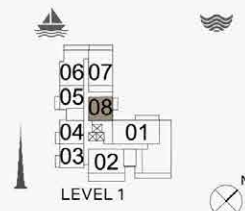
Disclaimer: Plans, details and unit orientation included are indicative only and are subject to change by the developer/seller at its sole discretion without notice and/or liability. All images, including features, finishes, furnishings, view and scale are illustrative only. Final areas, orientation, dimensions, layout and materials may differ from those stated.

PORT DE LA MER
La Sirène

1 BEDROOM APARTMENT TYPE 4
BUILDING 2 - LEVEL 1



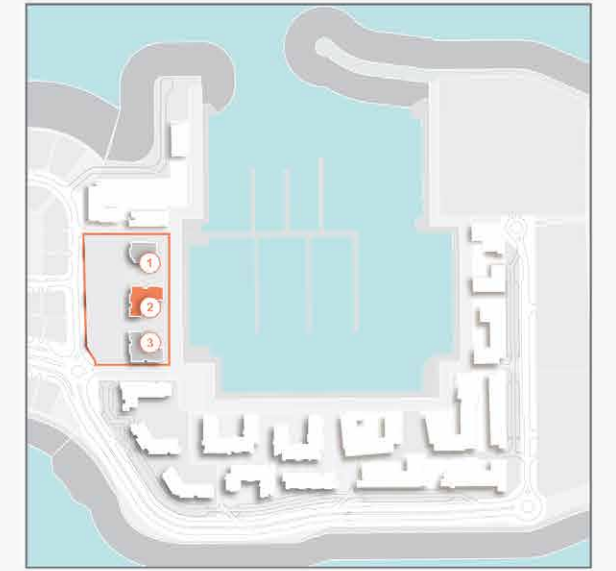
UNIT NO.	SUITE AREA		BALCONY AREA		TOTAL AREA	
	SQM	SQFT	SQM	SQFT	SQM	SQFT
108	68.87	741.31	7.68	82.67	76.55	823.98



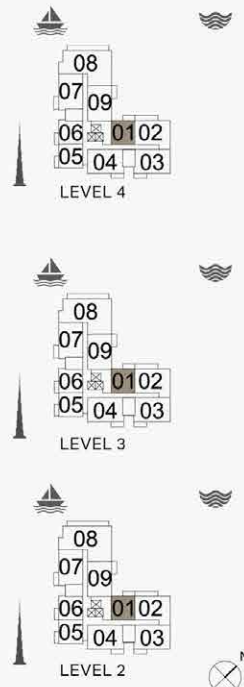
Disclaimer: Plans, details and unit orientation included are indicative only and are subject to change by the developer/seller at its sole discretion without notice and/or liability. All images, including features, finishes, furnishings, view and scale are illustrative only. Final areas, orientation, dimensions, layout and materials may differ from those stated.

PORT DE LA MER
La Sirène

1 BEDROOM APARTMENT TYPE 5
BUILDING 2 - LEVEL 2, 3, 4



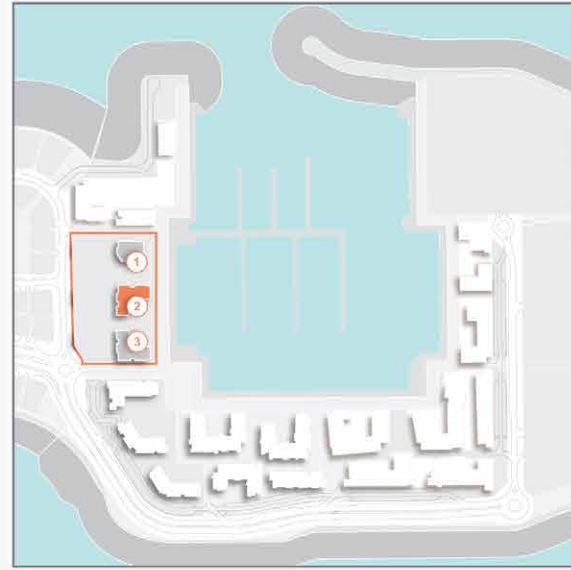
UNIT NO.	SUITE AREA		BALCONY AREA		TOTAL AREA	
	SQM	SQFT	SQM	SQFT	SQM	SQFT
201 301 401	68.81	740.67	7.12	76.64	75.93	817.31



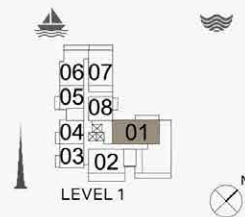
Disclaimer: Plans, details and unit orientation included are indicative only and are subject to change by the developer/seller at its sole discretion without notice and/or liability. All images, including features, finishes, furnishings, view and scale are illustrative only. Final areas, orientation, dimensions, layout and materials may differ from those stated.

PORT DE LA MER
La Sirène

2 BEDROOM APARTMENT TYPE 1
BUILDING 2 - LEVEL 1



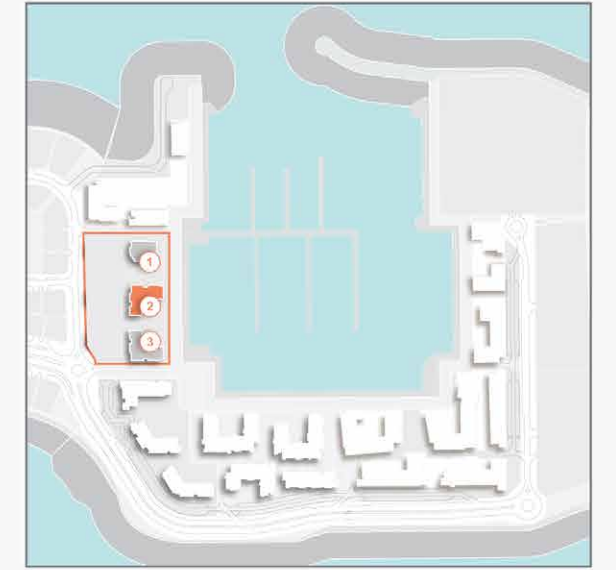
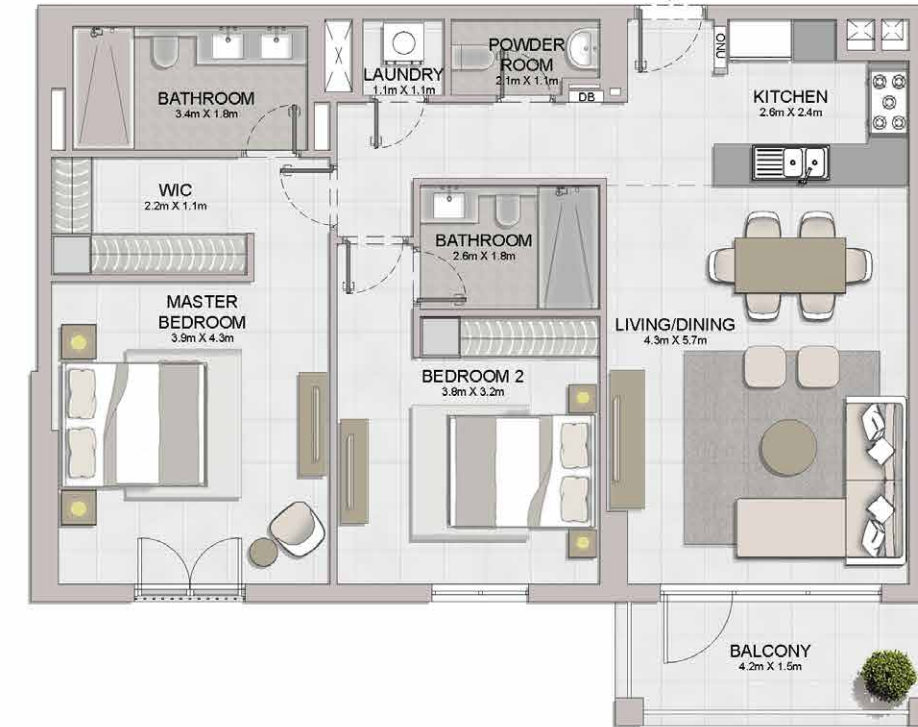
UNIT NO.	SUITE AREA		BALCONY AREA		TOTAL AREA	
	SQM	SQFT	SQM	SQFT	SQM	SQFT
101	139.61	1502.76	14.02	150.91	153.63	1653.67



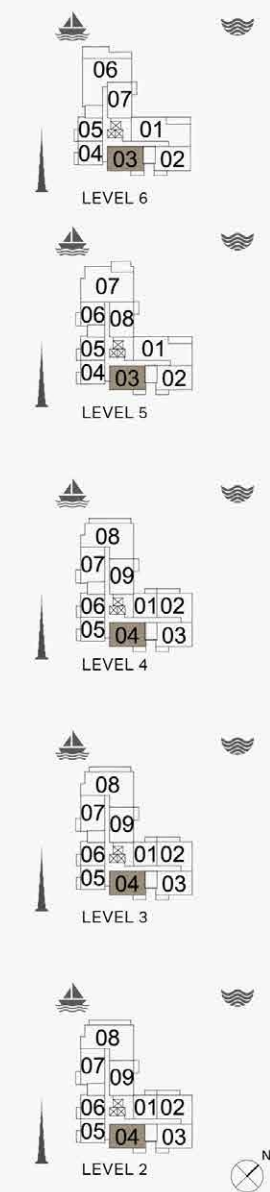
Disclaimer: Plans, details and unit orientation included are indicative only and are subject to change by the developer/seller at its sole discretion without notice and/or liability. All images, including features, finishes, furnishings, view and scale are illustrative only. Final areas, orientation, dimensions, layout and materials may differ from those stated.

PORT DE LA MER
La Sirène

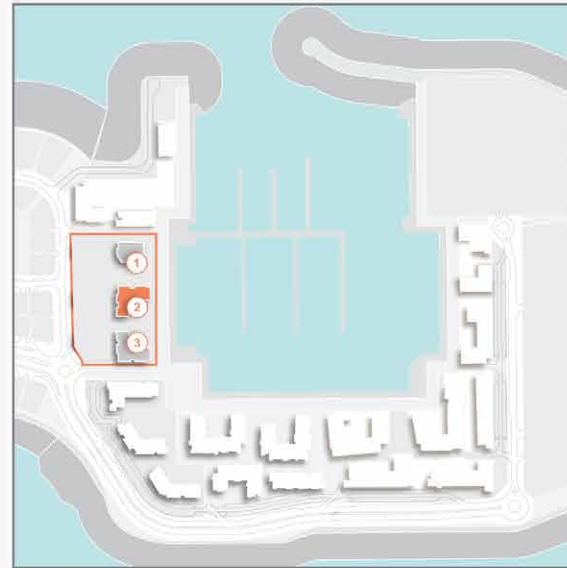
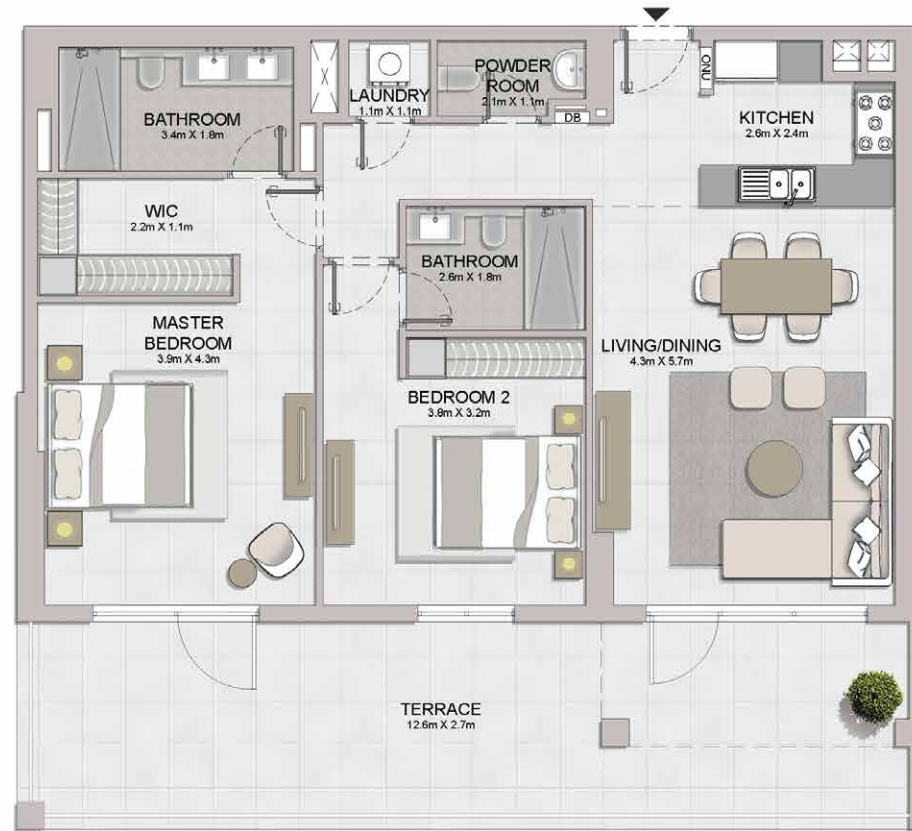
2 BEDROOM APARTMENT TYPE 2
BUILDING 2 - LEVEL 2, 3, 4, 5, 6



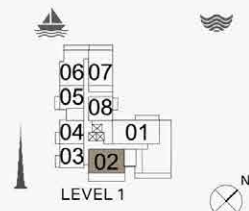
UNIT NO.	SUITE AREA		BALCONY AREA		TOTAL AREA	
	SQM	SQFT	SQM	SQFT	SQM	SQFT
204 304 404	105.15	1131.83	7.38	79.44	112.53	1211.27
503 603	105.20	1132.37	7.38	79.44	112.58	1211.81



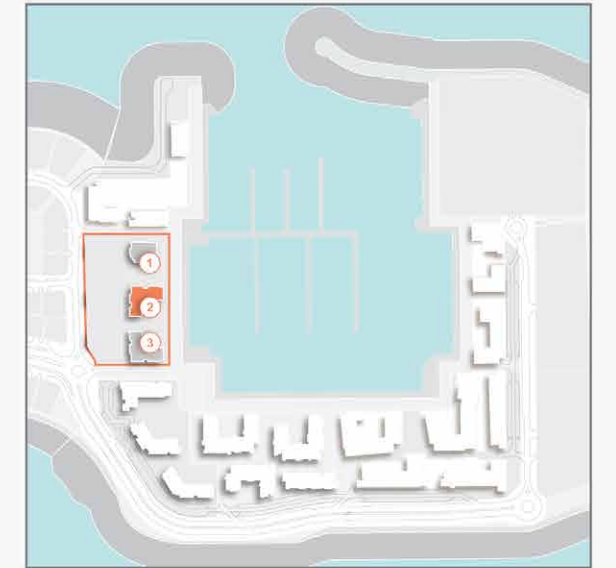
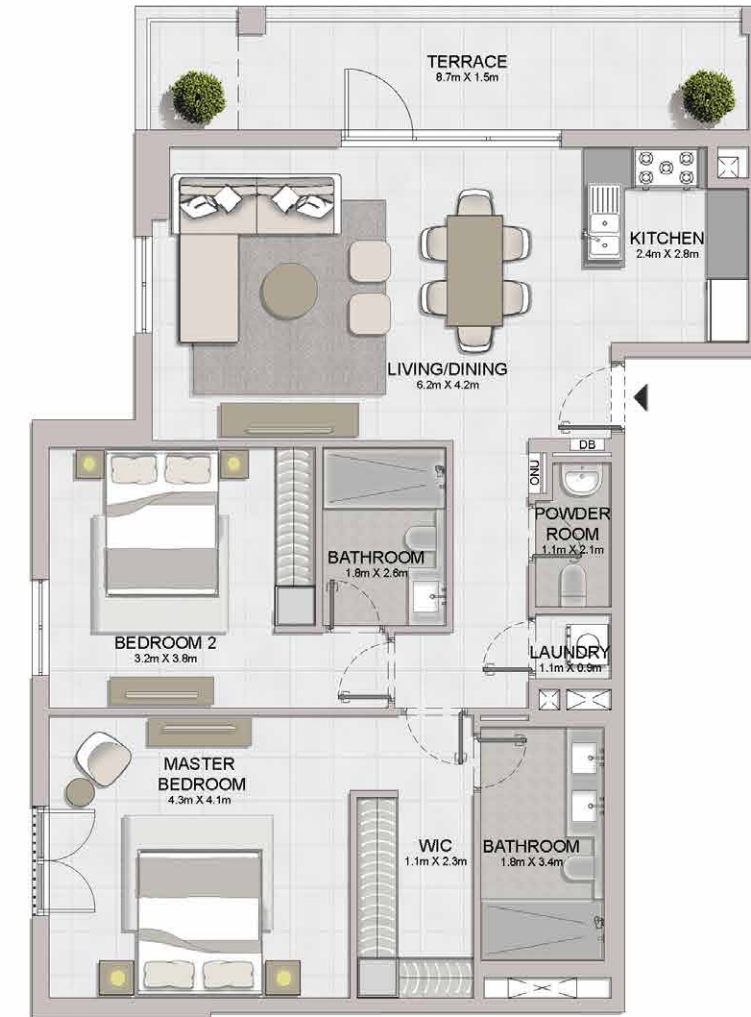
Disclaimer: Plans, details and unit orientation included are indicative only and are subject to change by the developer/seller at its sole discretion without notice and/or liability. All images, including features, finishes, furnishings, view and scale are illustrative only. Final areas, orientation, dimensions, layout and materials may differ from those stated.



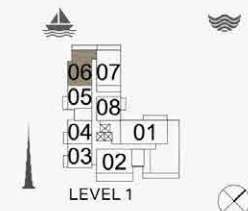
UNIT NO.	SUITE AREA		BALCONY AREA		TOTAL AREA	
	SQM	SQFT	SQM	SQFT	SQM	SQFT
102	104.88	1128.92	37.68	405.59	142.56	1534.51



Disclaimer: Plans, details and unit orientation included are indicative only and are subject to change by the developer/seller at its sole discretion without notice and/or liability. All images, including features, finishes, furnishings, view and scale are illustrative only. Final areas, orientation, dimensions, layout and materials may differ from those stated.



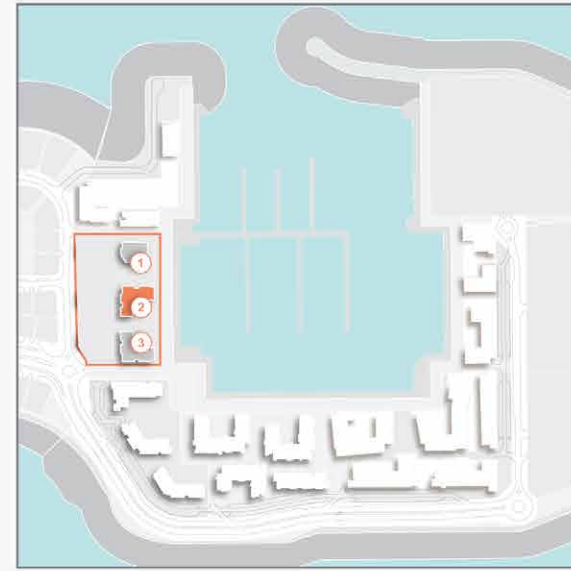
UNIT NO.	SUITE AREA		BALCONY AREA		TOTAL AREA	
	SQM	SQFT	SQM	SQFT	SQM	SQFT
106	103.74	1116.65	15.27	164.37	119.01	1281.02



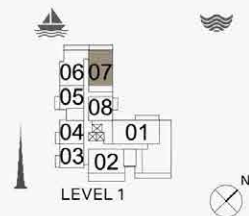
Disclaimer: Plans, details and unit orientation included are indicative only and are subject to change by the developer/seller at its sole discretion without notice and/or liability. All images, including features, finishes, furnishings, view and scale are illustrative only. Final areas, orientation, dimensions, layout and materials may differ from those stated.

PORT DE LA MER
La Sirène

2 BEDROOM APARTMENT TYPE 4
BUILDING 2 - LEVEL 1



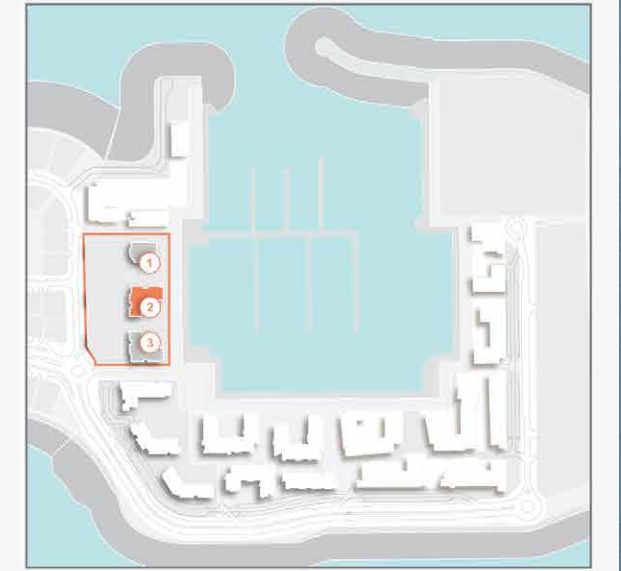
UNIT NO.	SUITE AREA		BALCONY AREA		TOTAL AREA	
	SQM	SQFT	SQM	SQFT	SQM	SQFT
107	104.03	1119.77	14.41	155.11	118.44	1274.88



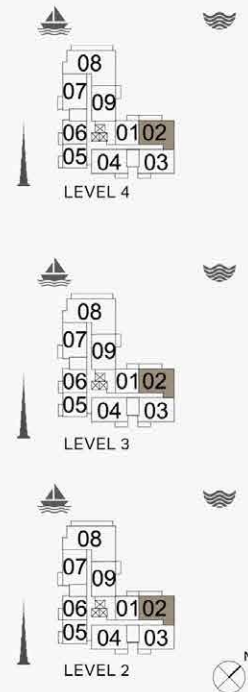
Disclaimer: Plans, details and unit orientation included are indicative only and are subject to change by the developer/seller at its sole discretion without notice and/or liability. All images, including features, finishes, furnishings, view and scale are illustrative only. Final areas, orientation, dimensions, layout and materials may differ from those stated.

PORT DE LA MER
La Sirène

2 BEDROOM APARTMENT TYPE 5
BUILDING 2 - LEVEL 2, 3, 4



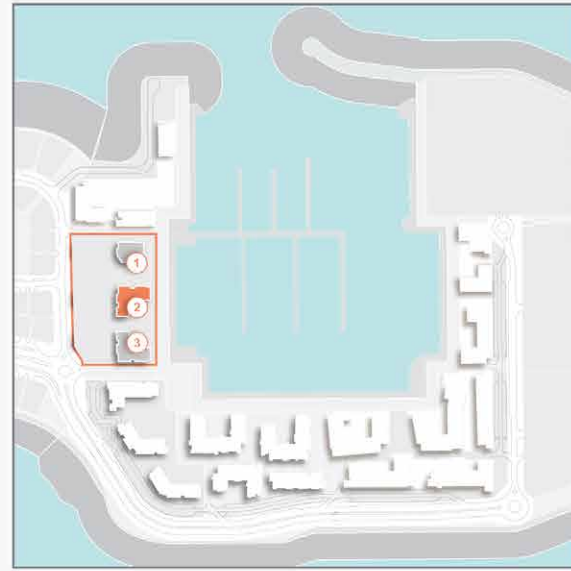
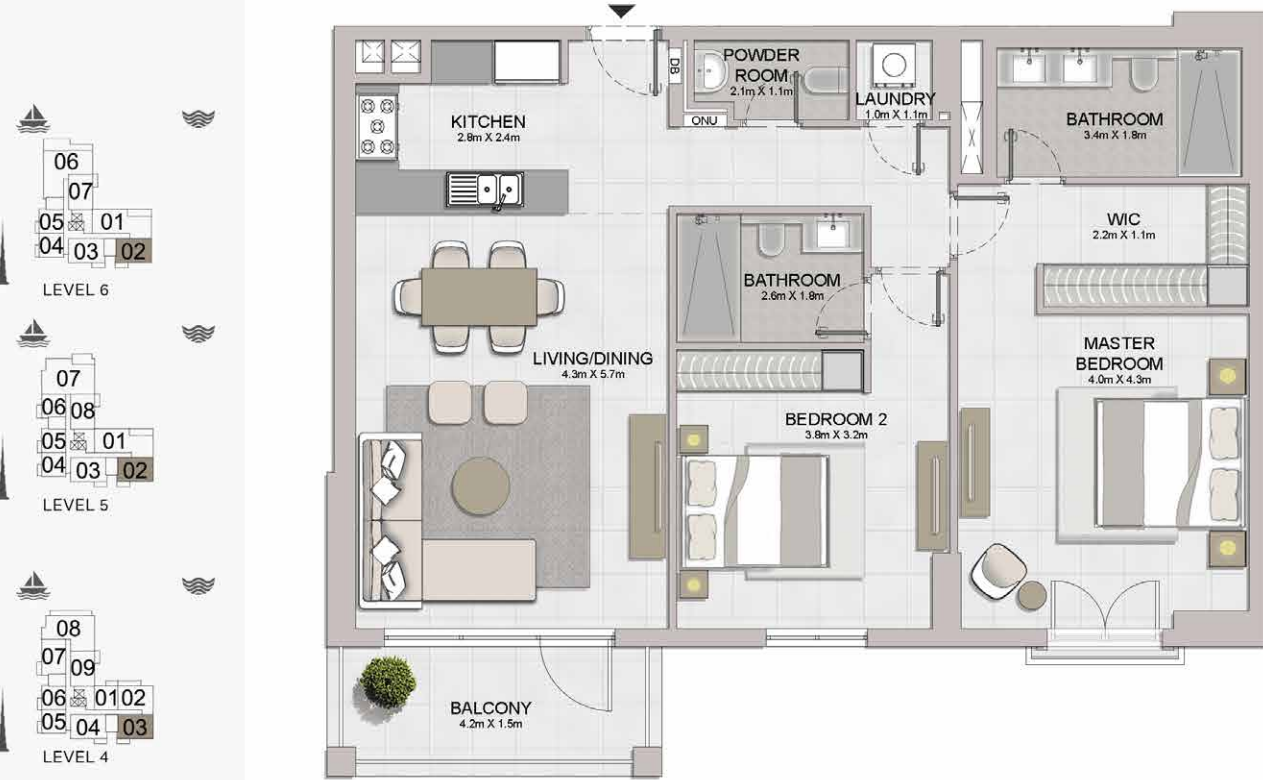
UNIT NO.	SUITE AREA		BALCONY AREA		TOTAL AREA	
	SQM	SQFT	SQM	SQFT	SQM	SQFT
202 302 402	112.43	1210.19	14.02	150.91	126.45	1361.10



Disclaimer: Plans, details and unit orientation included are indicative only and are subject to change by the developer/seller at its sole discretion without notice and/or liability. All images, including features, finishes, furnishings, view and scale are illustrative only. Final areas, orientation, dimensions, layout and materials may differ from those stated.

PORT DE LA MER
La Sirène

2 BEDROOM APARTMENT TYPE 6
BUILDING 2 - LEVEL 3, 4, 5, 6

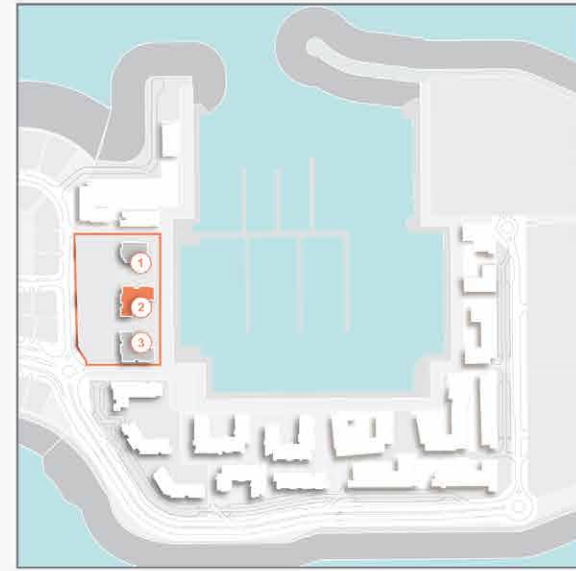
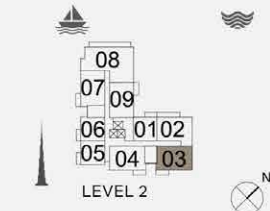
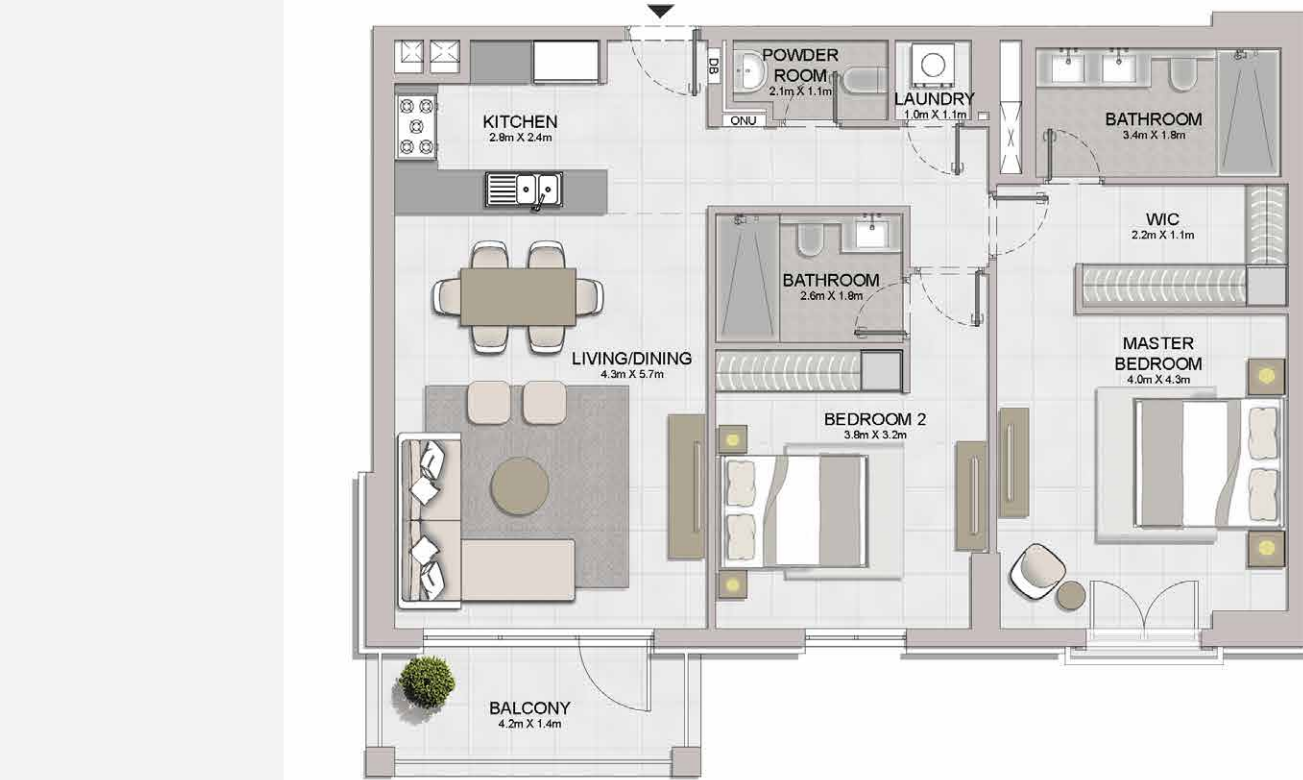


UNIT NO.	SUITE AREA		BALCONY AREA		TOTAL AREA	
	SQM	SQFT	SQM	SQFT	SQM	SQFT
303 403	104.98	1130.00	7.38	79.44	112.36	1209.44
502 602	104.94	1129.57	7.38	79.44	112.32	1209.01

Disclaimer: Plans, details and unit orientation included are indicative only and are subject to change by the developer/seller at its sole discretion without notice and/or liability. All images, including features, finishes, furnishings, view and scale are illustrative only. Final areas, orientation, dimensions, layout and materials may differ from those stated.

PORT DE LA MER
La Sirène

2 BEDROOM APARTMENT TYPE 6A
BUILDING 2 - LEVEL 2

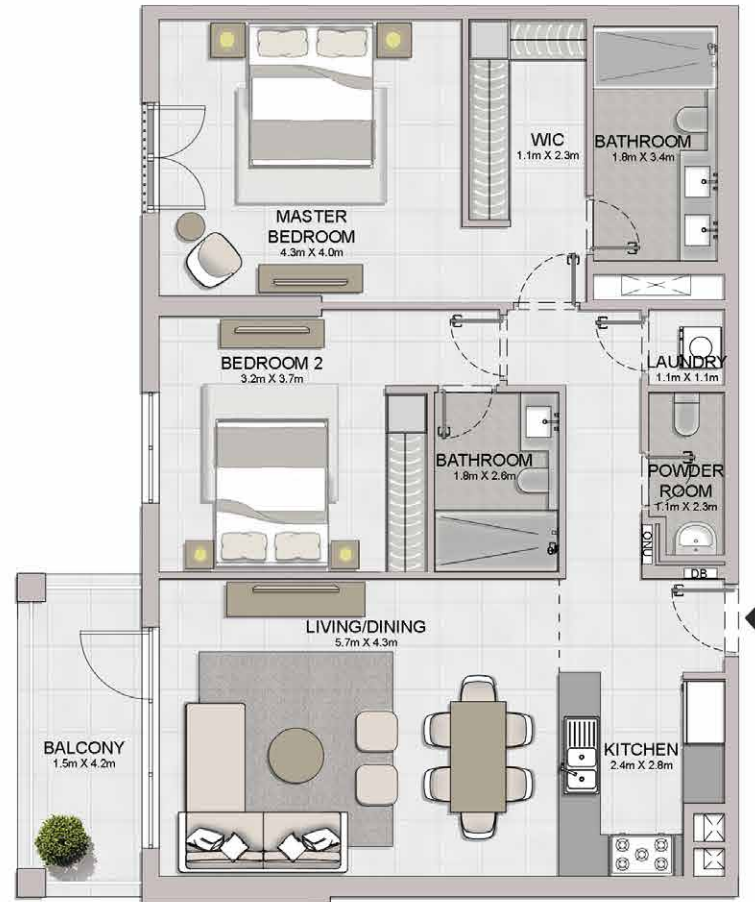
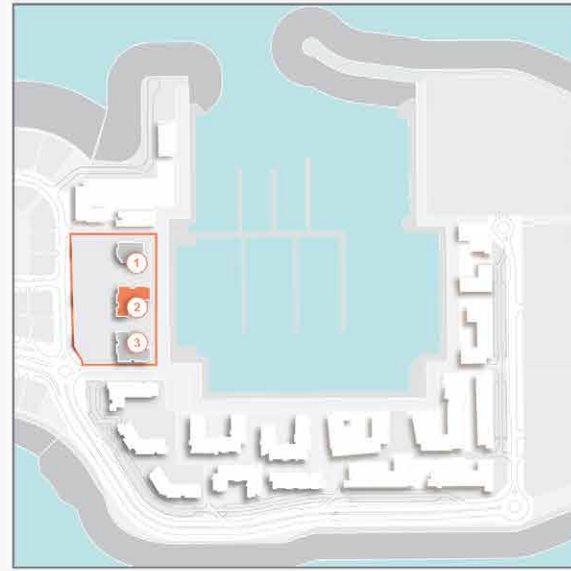


UNIT NO.	SUITE AREA		BALCONY AREA		TOTAL AREA	
	SQM	SQFT	SQM	SQFT	SQM	SQFT
203	104.98	1130.00	7.38	79.44	112.36	1209.44

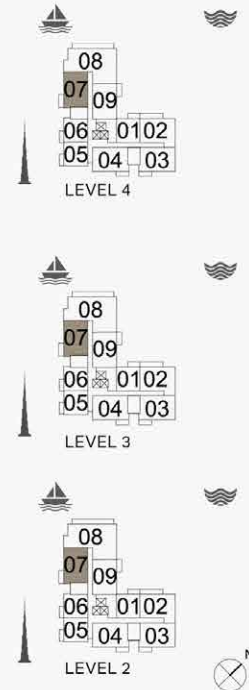
Disclaimer: Plans, details and unit orientation included are indicative only and are subject to change by the developer/seller at its sole discretion without notice and/or liability. All images, including features, finishes, furnishings, view and scale are illustrative only. Final areas, orientation, dimensions, layout and materials may differ from those stated.

PORT DE LA MER
La Sirène

2 BEDROOM APARTMENT TYPE 7
BUILDING 2 - LEVEL 2, 3, 4



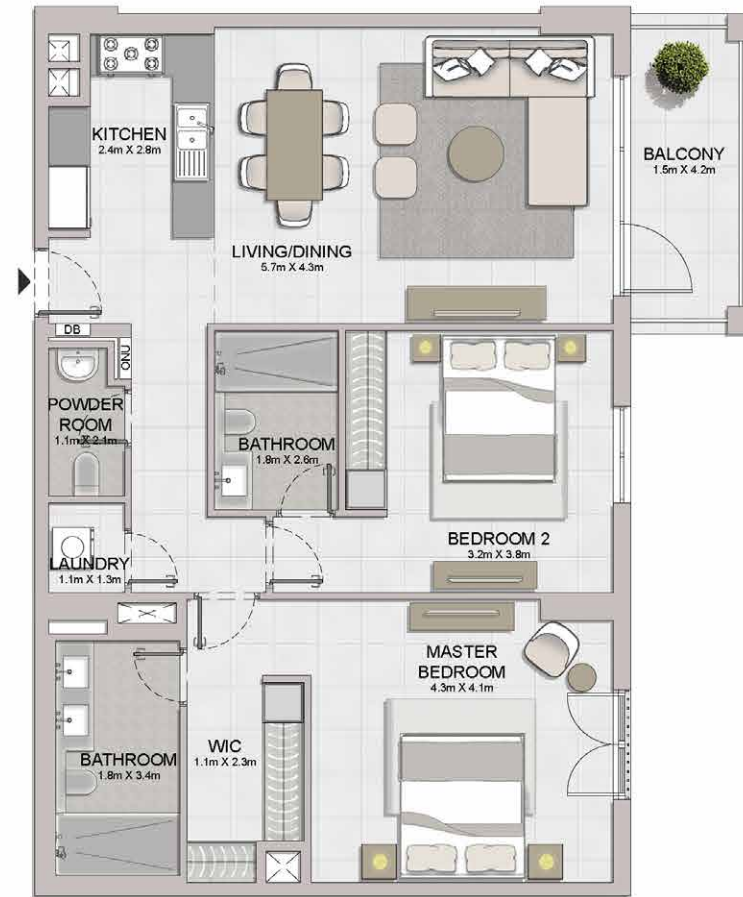
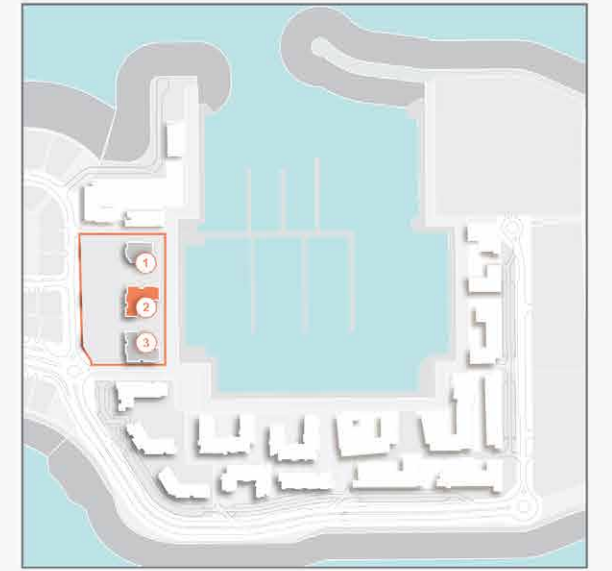
UNIT NO.	SUITE AREA		BALCONY AREA		TOTAL AREA	
	SQM	SQFT	SQM	SQFT	SQM	SQFT
207 307 407	104.68	1126.77	7.38	79.44	112.06	1206.21



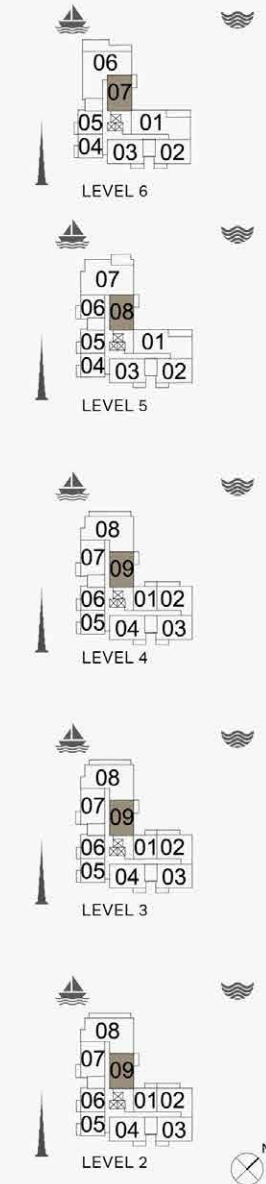
Disclaimer: Plans, details and unit orientation included are indicative only and are subject to change by the developer/seller at its sole discretion without notice and/or liability. All images, including features, finishes, furnishings, view and scale are illustrative only. Final areas, orientation, dimensions, layout and materials may differ from those stated.

PORT DE LA MER
La Sirène

2 BEDROOM APARTMENT TYPE 8
BUILDING 2 - LEVEL 2, 3, 4, 5, 6



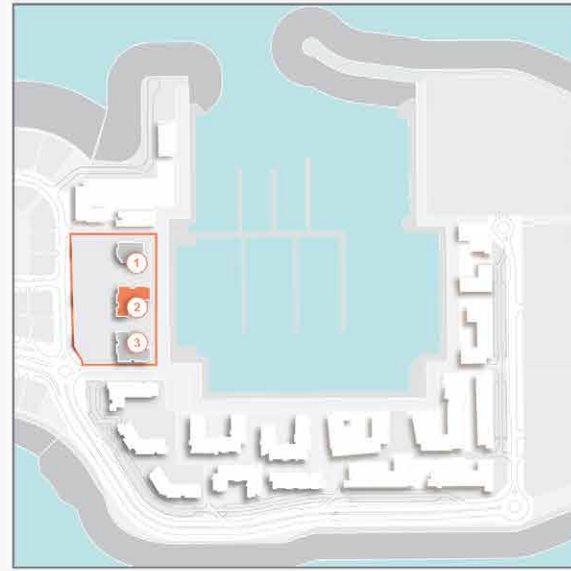
UNIT NO.	SUITE AREA		BALCONY AREA		TOTAL AREA	
	SQM	SQFT	SQM	SQFT	SQM	SQFT
209 309 409	104.16	1121.17	7.38	79.44	111.54	1200.61



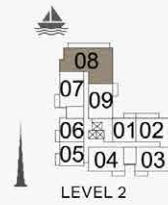
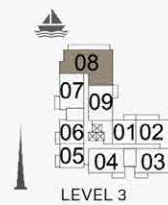
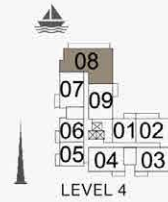
Disclaimer: Plans, details and unit orientation included are indicative only and are subject to change by the developer/seller at its sole discretion without notice and/or liability. All images, including features, finishes, furnishings, view and scale are illustrative only. Final areas, orientation, dimensions, layout and materials may differ from those stated.

PORT DE LA MER
La Sirène

3 BEDROOM APARTMENT TYPE 1
BUILDING 2 - LEVEL 2, 3, 4



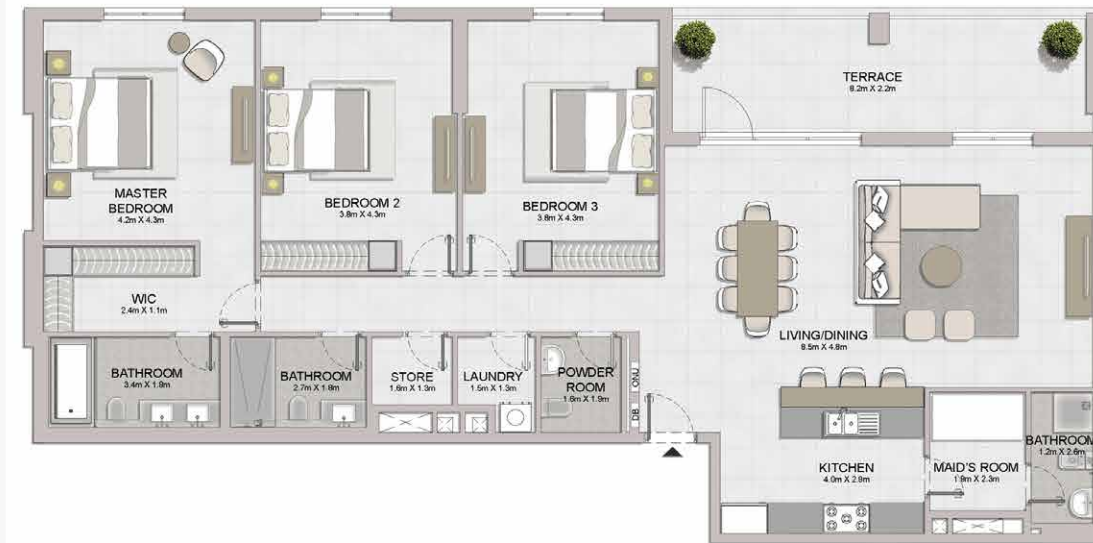
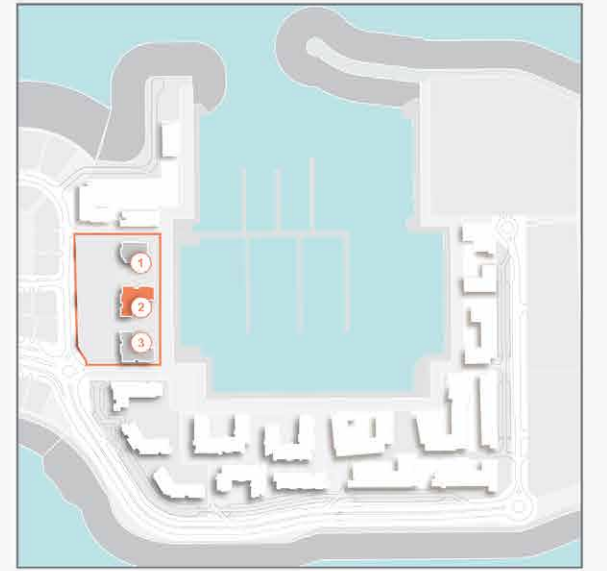
UNIT NO.	SUITE AREA		BALCONY AREA		TOTAL AREA	
	SQM	SQFT	SQM	SQFT	SQM	SQFT
208 308 408	184.26	1983.37	25.32	272.54	209.58	2255.91



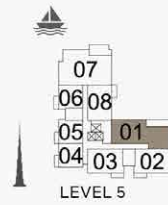
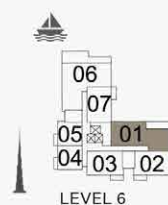
Disclaimer: Plans, details and unit orientation included are indicative only and are subject to change by the developer/seller at its sole discretion without notice and/or liability. All images, including features, finishes, furnishings, view and scale are illustrative only. Final areas, orientation, dimensions, layout and materials may differ from those stated.

PORT DE LA MER
La Sirène

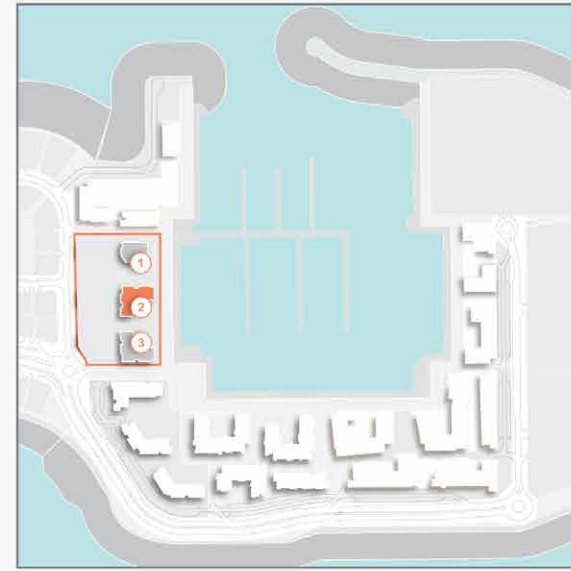
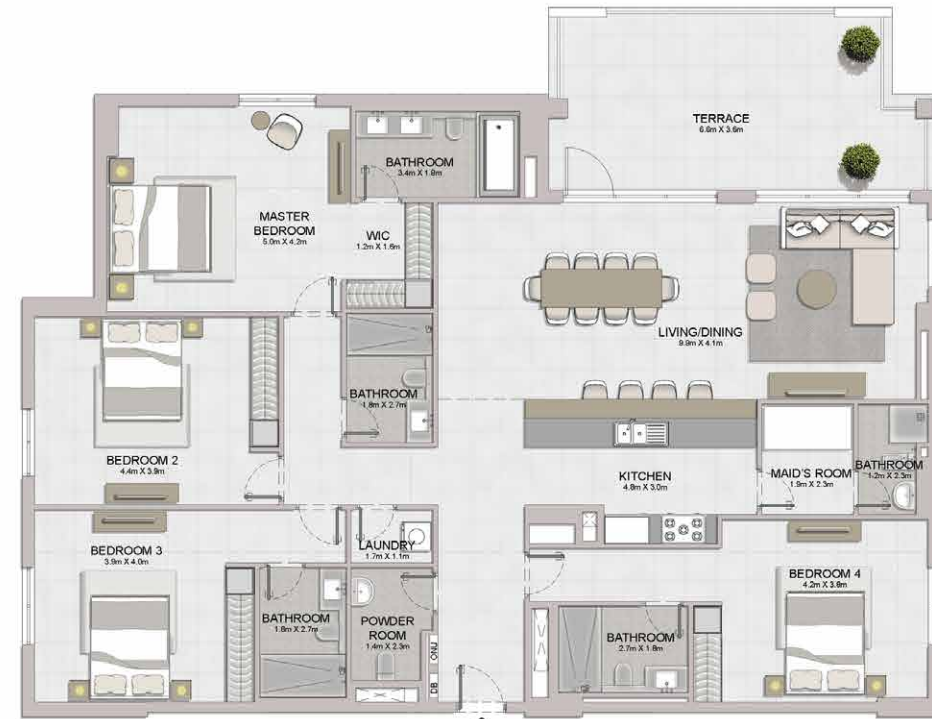
3 BEDROOM APARTMENT TYPE 2
BUILDING 2 - LEVEL 5, 6



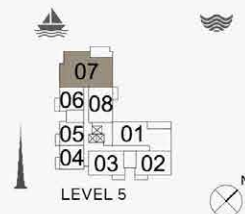
UNIT NO.	SUITE AREA		BALCONY AREA		TOTAL AREA	
	SQM	SQFT	SQM	SQFT	SQM	SQFT
501	168.29	1811.47	20.41	219.69	188.70	2031.16
601	168.24	1810.93	20.41	219.69	188.65	2030.62



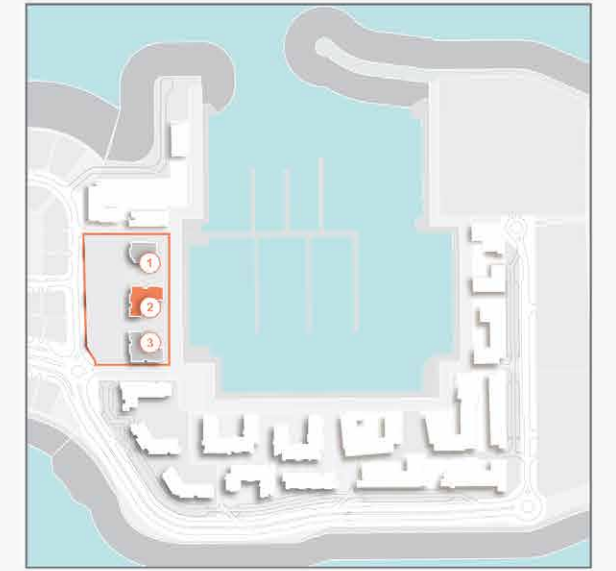
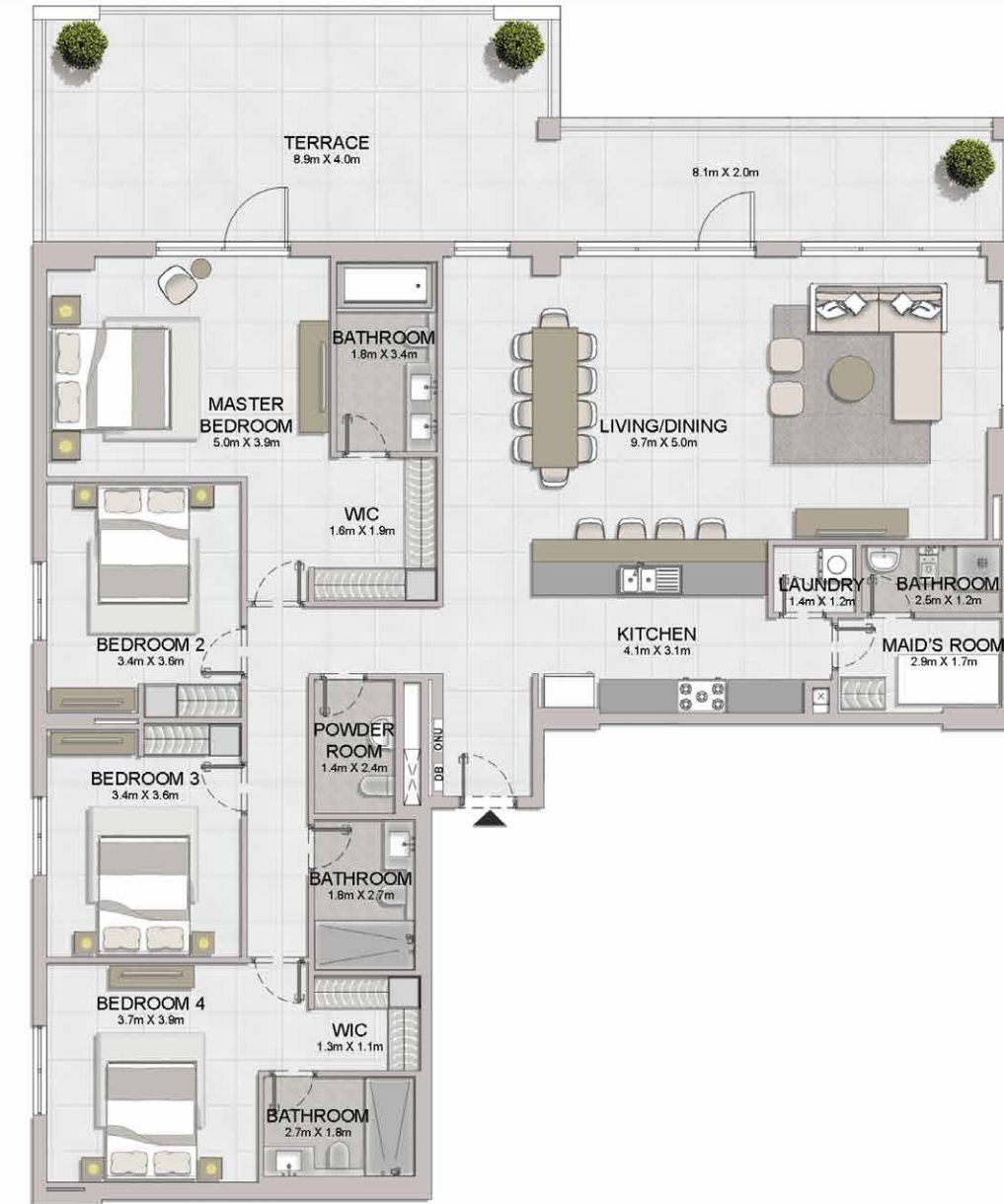
Disclaimer: Plans, details and unit orientation included are indicative only and are subject to change by the developer/seller at its sole discretion without notice and/or liability. All images, including features, finishes, furnishings, view and scale are illustrative only. Final areas, orientation, dimensions, layout and materials may differ from those stated.



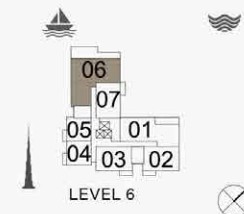
UNIT NO.	SUITE AREA		BALCONY AREA		TOTAL AREA	
	SQM	SQFT	SQM	SQFT	SQM	SQFT
507	212.50	2287.34	28.40	305.70	240.90	2593.04



Disclaimer: Plans, details and unit orientation included are indicative only and are subject to change by the developer/seller at its sole discretion without notice and/or liability. All images, including features, finishes, furnishings, view and scale are illustrative only. Final areas, orientation, dimensions, layout and materials may differ from those stated.



UNIT NO.	SUITE AREA		BALCONY AREA		TOTAL AREA	
	SQM	SQFT	SQM	SQFT	SQM	SQFT
606	205.16	2208.33	55.15	593.63	260.31	2801.96



Disclaimer: Plans, details and unit orientation included are indicative only and are subject to change by the developer/seller at its sole discretion without notice and/or liability. All images, including features, finishes, furnishings, view and scale are illustrative only. Final areas, orientation, dimensions, layout and materials may differ from those stated.





PORT
de la
MER
LA SIRÈNE

||| MERAAS



CONTACT US

+971 4 248 3400 | +971 55 162 3236

Email Us

info@tanamiproperties.ae

For More Info...

<https://www.tanamiproperties.com/Projects/La-Sirene-Port-De-La-Mer>



ADDRESS

Office 3405, Marina Plaza,
Al Marsa Street, Dubai Marina, UAE

