

V I R D I S

D2
DAMAC HILLS 2

A close-up photograph of a person's hand reaching towards a body of water. The hand is positioned in the center-right of the frame, with fingers slightly spread. The water is a deep, vibrant blue-green color, and the hand's reflection is visible in the water below. The lighting is soft, highlighting the texture of the skin and the ripples on the water's surface.

WHERE EVERYTHING IS

WITHIN REACH

WHEN IT COMES
TO LIFE,
WHO DOESN'T
WANT IT ALL?

The excitement of the outdoors and exhilaration of the race. Water-friendly wonders and the thrill of your favourite sports. The social life you love. The closeness to nature you crave.



VIRIDIS

S
D
R
V

IMAGINE AN
ADDRESS WHERE
EVERYTHING
YOU COULD WANT
**WAS RIGHT AT
YOUR DOORSTEP.**

Rising up from the heart of DAMAC Hills 2, Virdis offers spectacular community and city views on all sides. With striking exteriors, impressive interiors and unrivalled amenities, it's the address, and the investment, you've been waiting for.

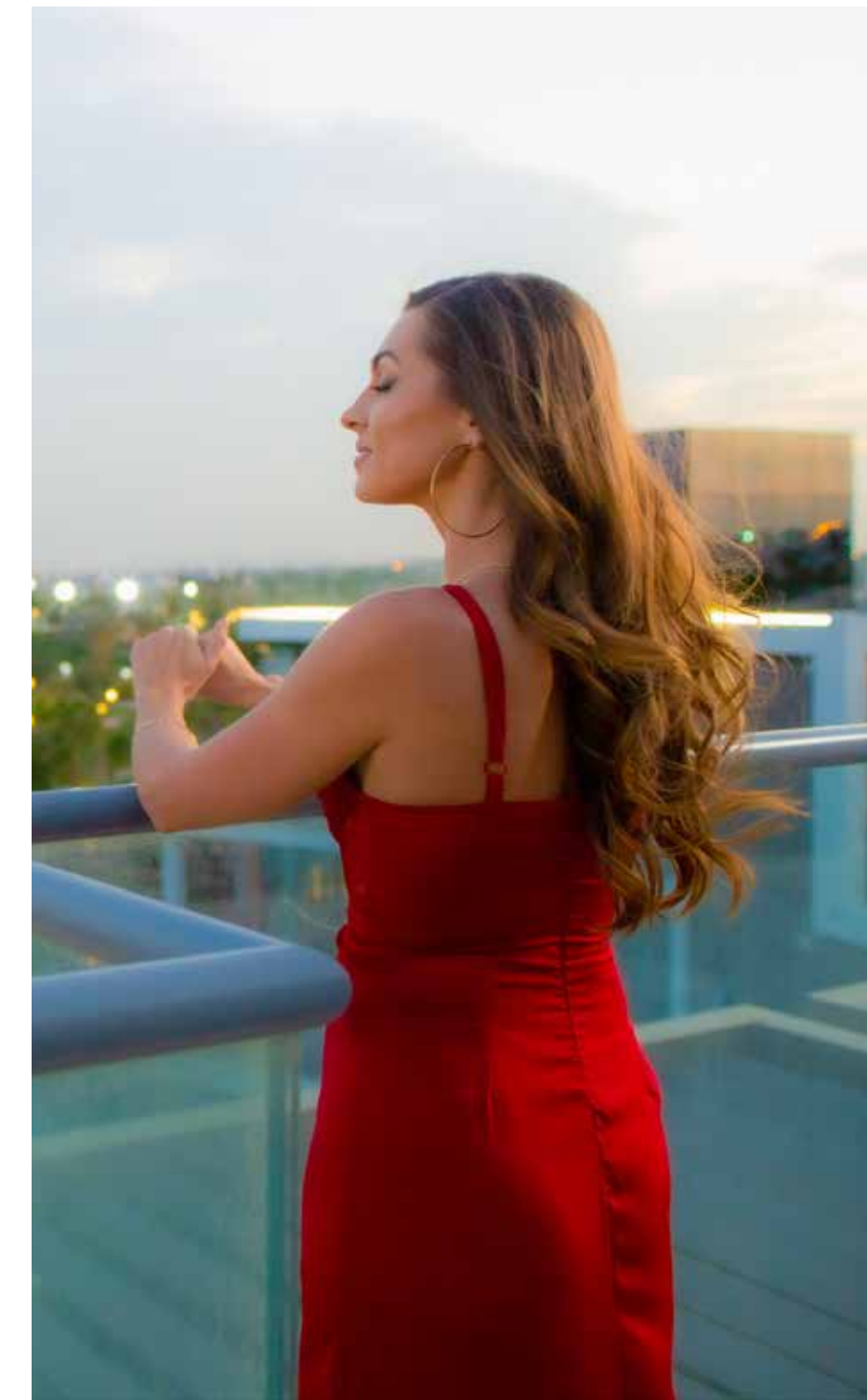


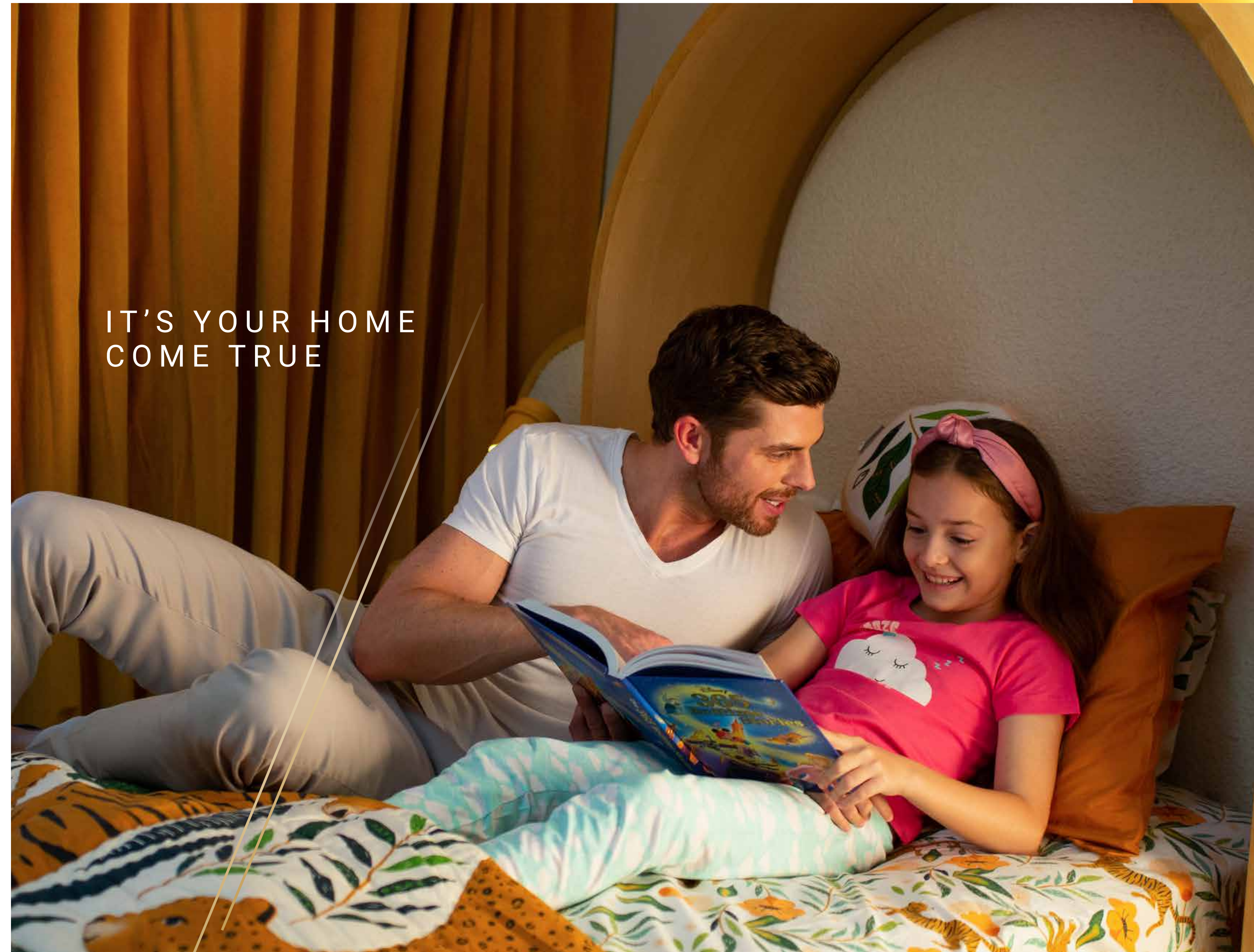


SERVICED APARTMENTS - TOWER A & B

THE IDEAL INVESTMENT

Set in Towers A and B, the Virdis serviced apartments are luxurious spaces designed for today's young professionals. With an easy investment process and fantastic price point, these units present the perfect ready-returns opportunity, whether for the long or short-term.





IT'S YOUR HOME
COME TRUE

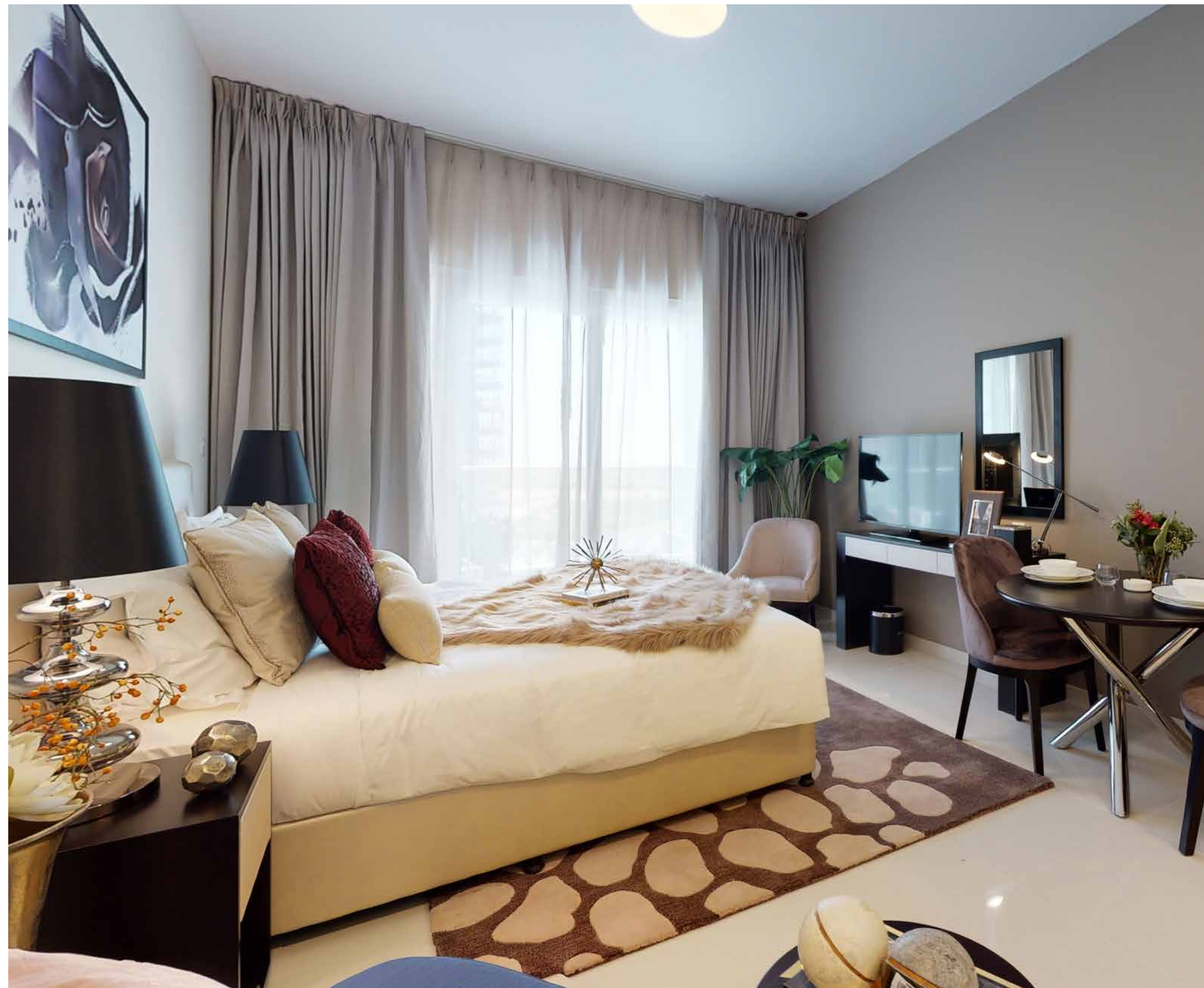


RESIDENCES - TOWER C & D

Towers C and D come with a range of studio, one- and two-bedroom residential apartments that showcase ultimate comfort and convenience, serene spaces to call your own, as well as a world of fun and excitement that's just a stone's throw away.

THE INSIDE STORY

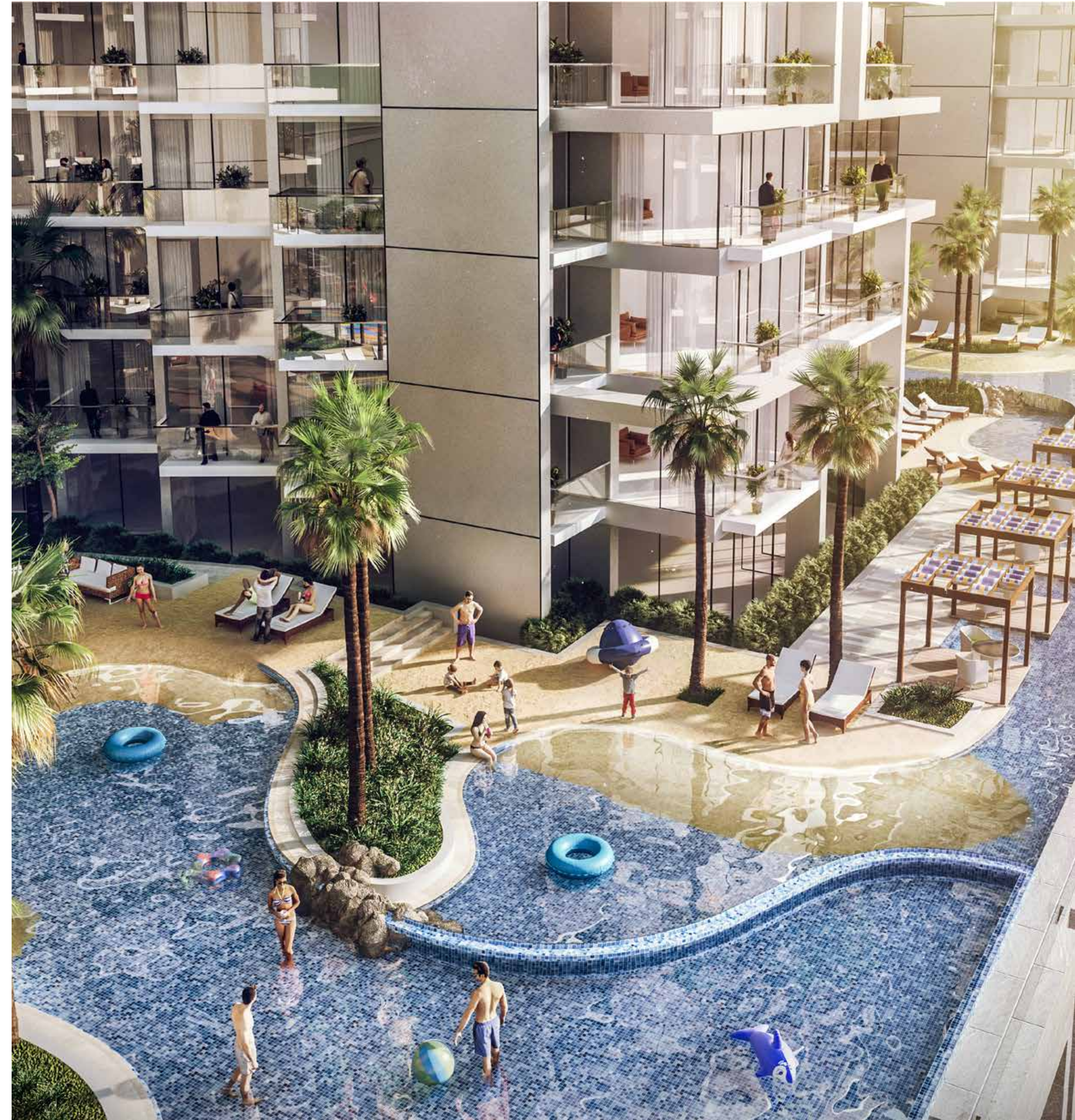
Tastefully designed with elegant textures, state-of-the-art finishes and more, the interiors at each of the Virdis towers are hand-picked to enhance your living experience.





JUST WHAT YOU NEED

Whether you need to rest or recharge, head to the world-class facilities at Virdis, fitted with a wide range of state-of-the-art equipment, and find exactly what you're looking for. Indulge in physical fitness and good health at the exclusive gym, pool and spa as you take in calming community views.





DAMAC HILLS 2
LIVING

Welcome to a world where the everyday expresses itself with its own one-of-a-kind charm, combining nature, wellness, activity and community into a single space you call home.

LOOK FORWARD TO MORE AT DAMAC HILLS 2

The strategic location allows easy access to four major highways and other networks that put the city within easy reach.

Take Al Qudra Road and find yourself at the gates of DAMAC Hills 2 within 25 minutes.



THE PERFECT SETTING

Just a short drive from the centre of the city, and yet it feels like a world away with its lush greenery, wholesome experiences and living spaces that suit all your needs.





MORE TO EXPLORE, EVERY DAY

Look at life differently as you embrace the new, the exciting and the adventurous in a community that creates countless experiences, luxury living in brilliant spaces and a sense of belonging for all.



WATER TOWN

DISCOVER YOUR WATER WONDERLAND

Looks like a water park, but feels like home! Feel the wind in your hair and the surf at your feet at the wave-riding paradise that's just a few steps away from your door.

With a state-of-the-art wave simulator that makes for a thrilling experience every time, Water Town at DAMAC Hills 2 comes complete with a host of water attractions including the massive Malibu Beach, a lazy river, a wave pool, a splash pad, slippery slides and much more, promising endless hours of water-friendly fun in the sun.





SPORTS TOWN

DISCOVER YOUR LOVE FOR THE GAME

Step into character on the courts and fields at DAMAC Hills 2 and lose yourself in the sports you love.

Equipped for hours of endless exhilaration, Sports Town has it all – an outdoor gym, a cricket pitch and nets, tennis and padel tennis courts, volleyball, basketball, football facilities and much more.





DOWN TOWN

DISCOVER THE LIFE YOU LOVE

Get away from the everyday and celebrate the outdoors Down Town, a space dedicated to good energy and great times.

Start your day with yoga at the Zen Garden, followed by a relaxed stroll through lush greenery and a family BBQ to look forward to.



DISCOVER A LAZY DAY

Sometimes you just need to sit back and go with the flow. Explore Water Town at your own pace as you spend your afternoons slowly drifting through a brand new lazy river attraction.





DISCOVER HOW TO HANG TEN

Happiness comes in waves as you master the art of surfing. Get more than your fair share of excitement as you improve on every turn and on every wave you catch.

DISCOVER THE PERFECT DAY

With a host of activities for the entire family, get closer to wonder at experiences like the Outdoor Cinema, Butterfly Garden, Fishing Lake, Farmer's Market Petting Farm and Bird Enclosure, not to mention the fun that awaits at the Picnic Park, Dance Studio and plenty more.



DISCOVER YOUR WINNING STREAK

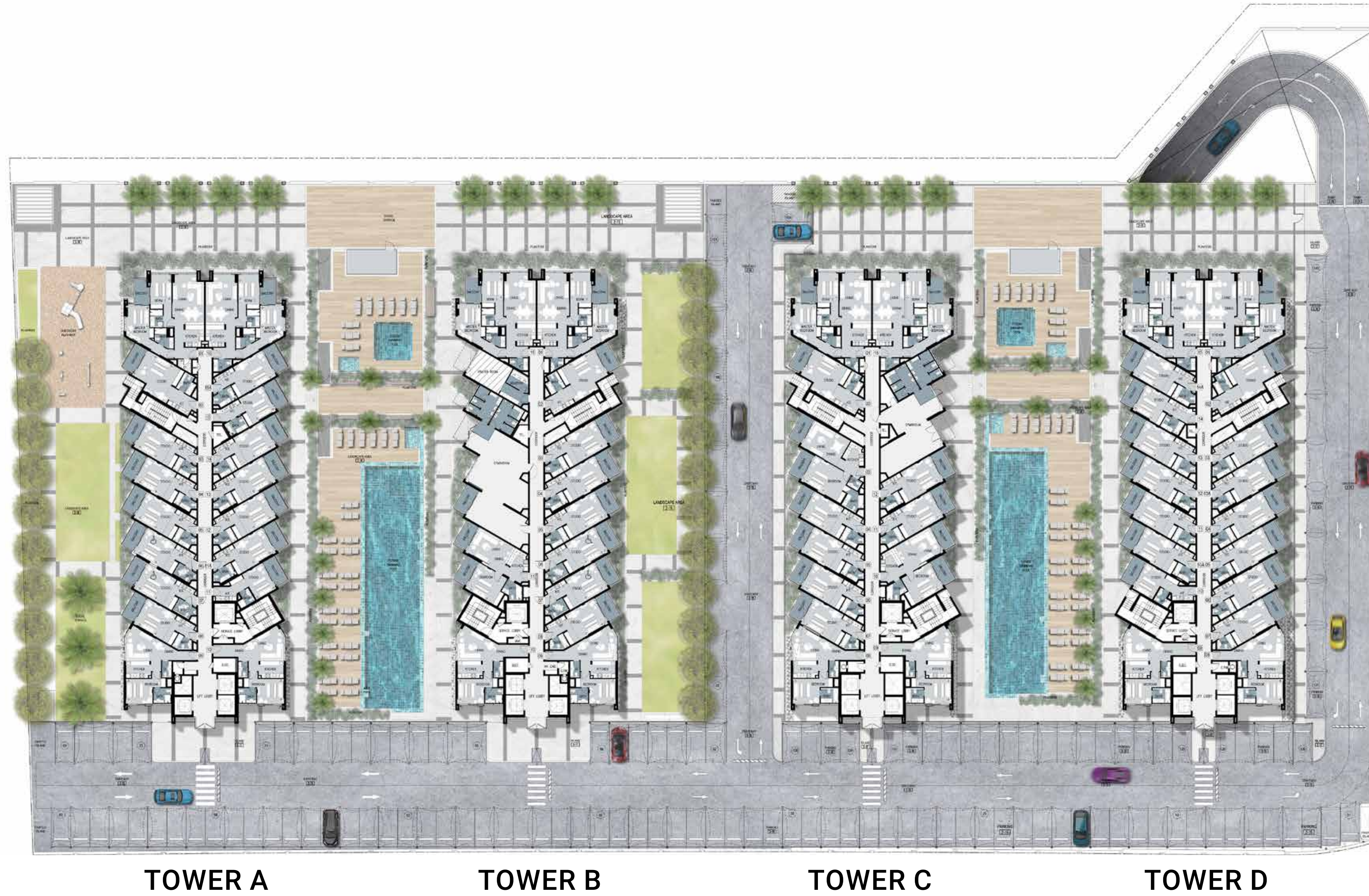
Ready for a little action and adventure? Assemble your team and head to the Paintball Arcade for a true test of agility, strategy and competitive spirit, all tied together with a massive dose of fun!





TYPICAL FLOOR PLANS

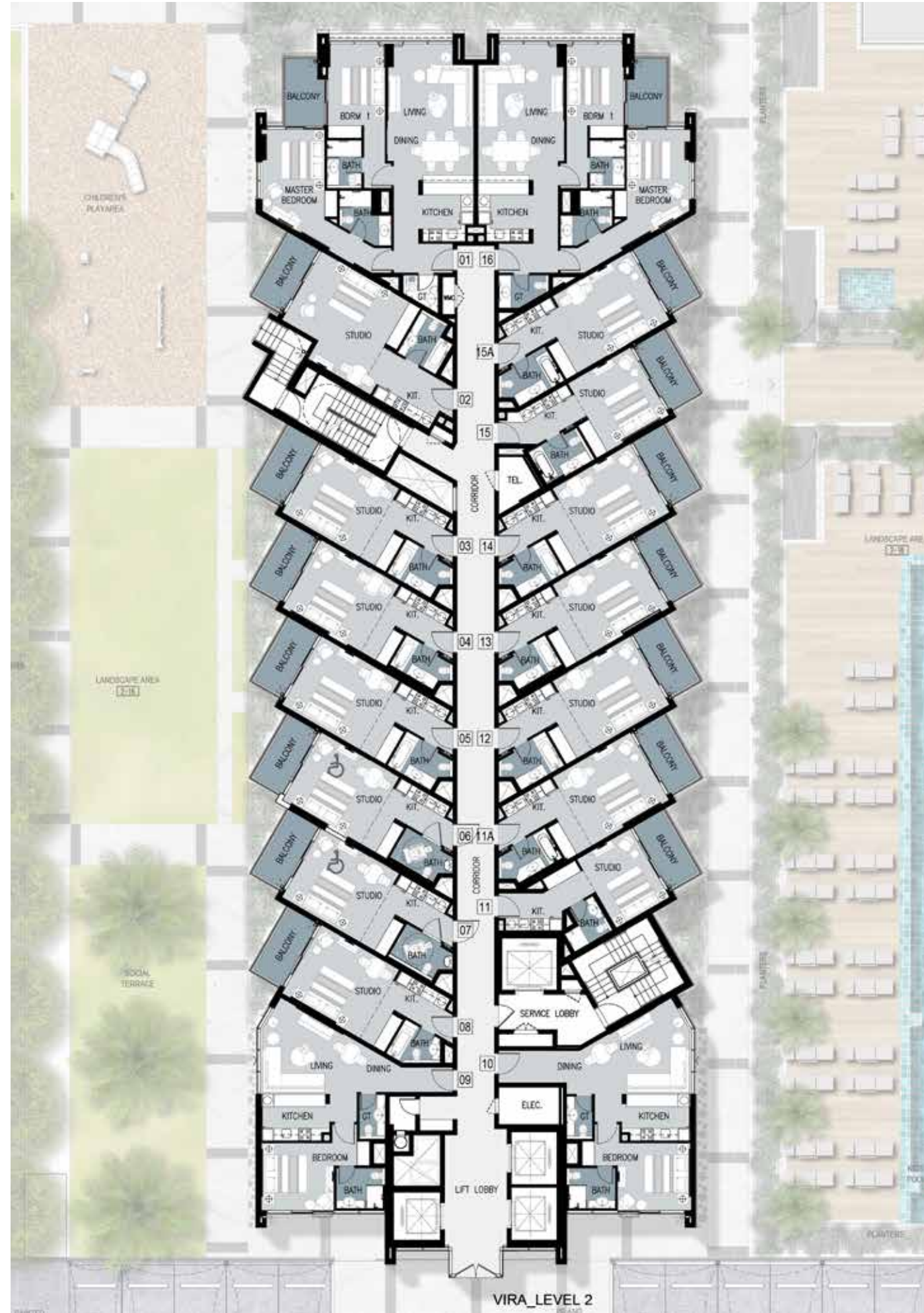
PODIUM LEVEL



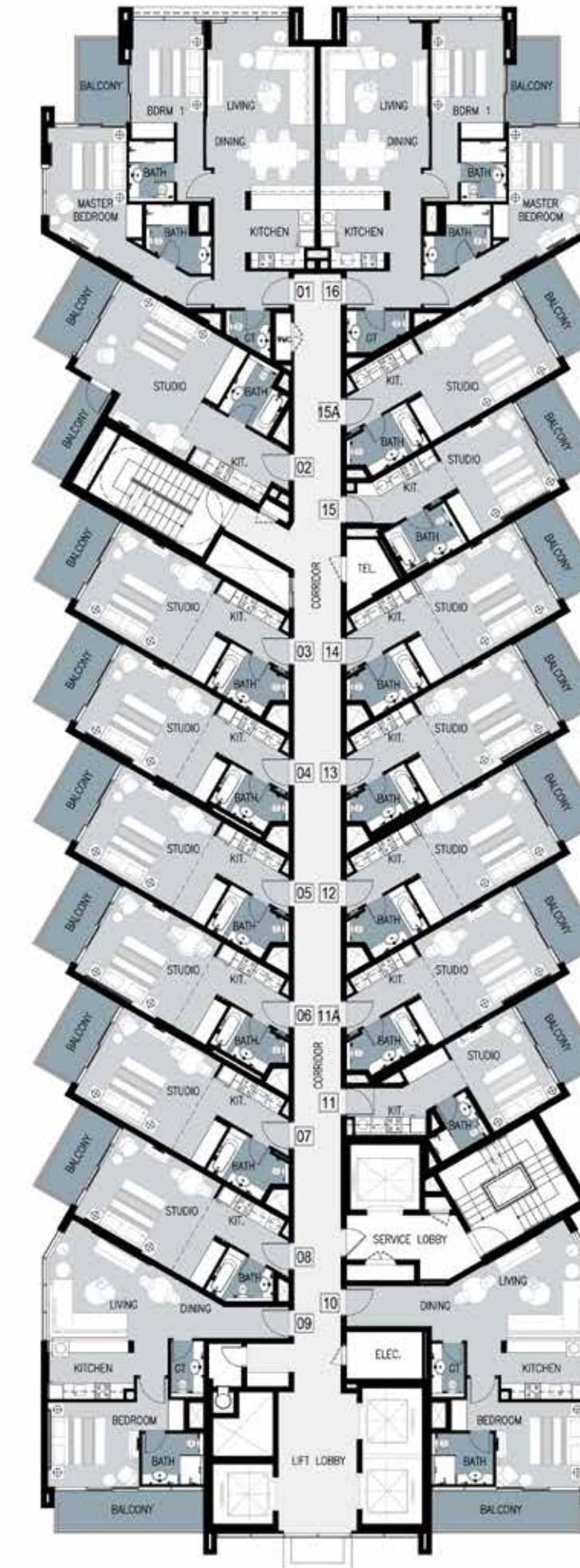
*Unless stated above, all accessories and interior finishes such as wallpaper, chandeliers, furniture, electronics, white goods, curtains, hard and soft landscaping, pavements, features, swimming pool(s) and other elements displayed in the brochure, or within the show apartment / villa or between the plot boundary and the unit, are not part of the standard unit and exhibited for illustrative purposes only.

TYPICAL FLOOR PLANS

TOWER A



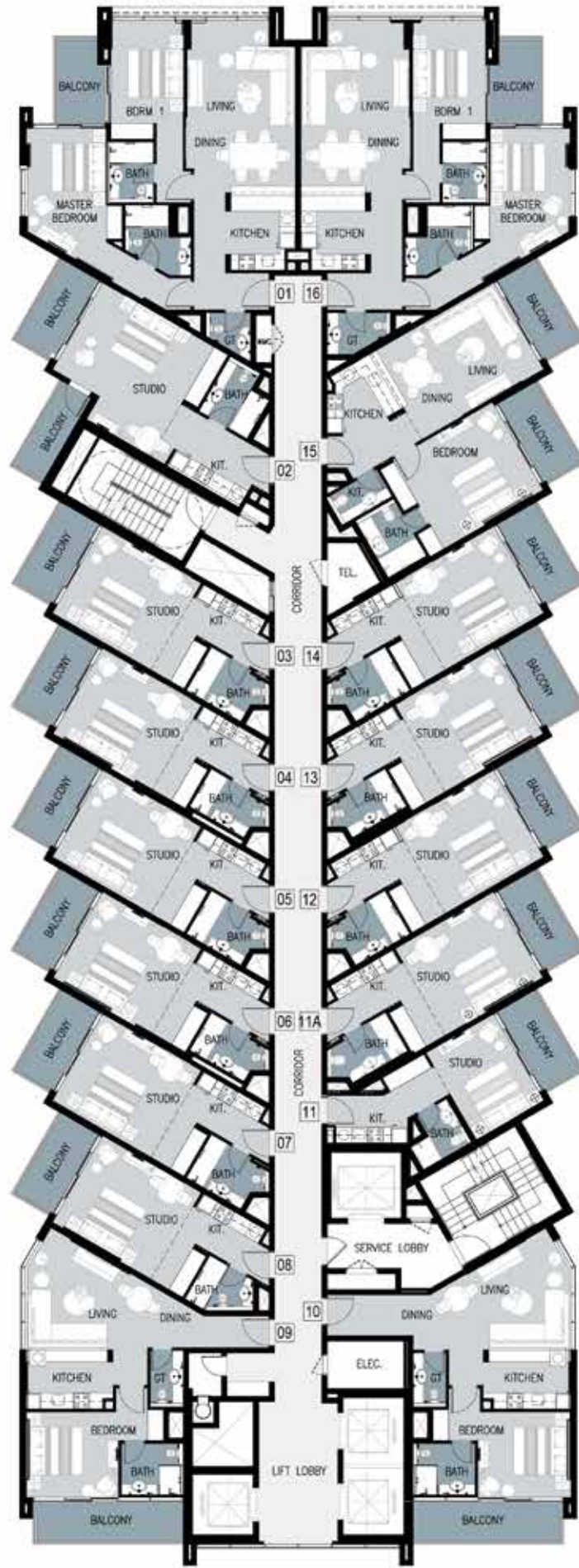
LEVEL 2



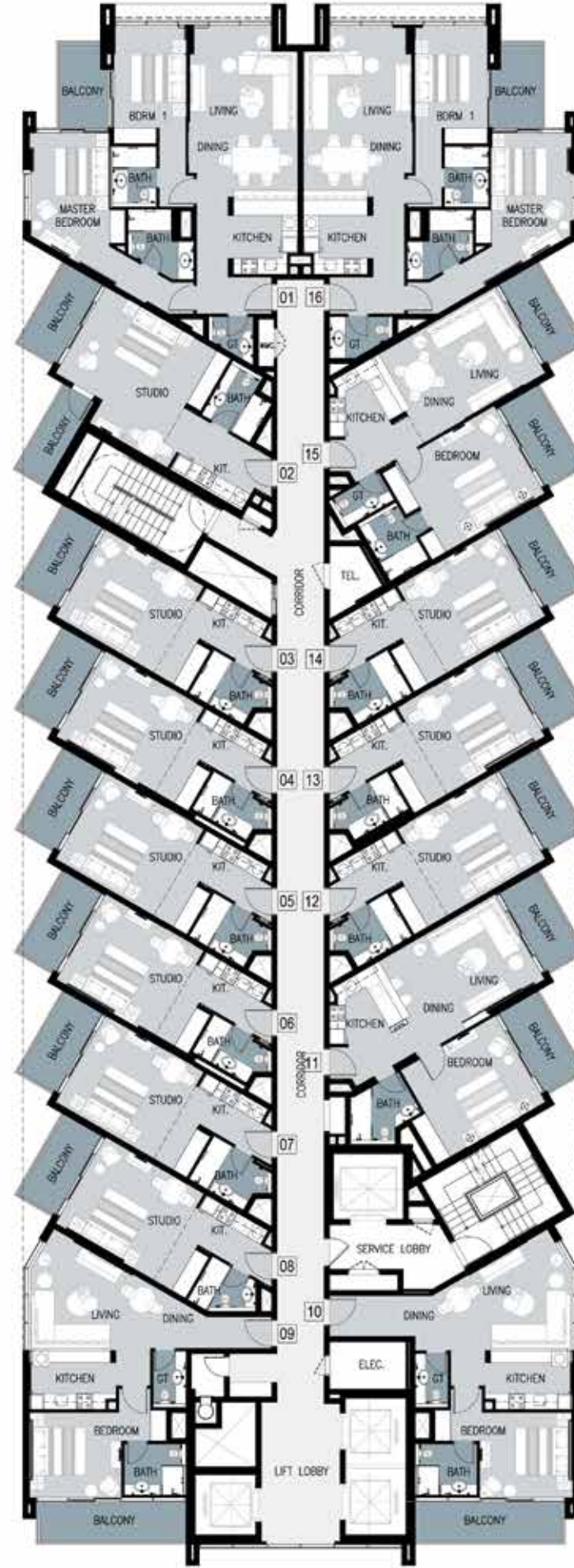
LEVELS 3 TO 8

TYPICAL FLOOR PLANS

TOWER A
SERVICED APARTMENTS



LEVELS 9, 12 and 13



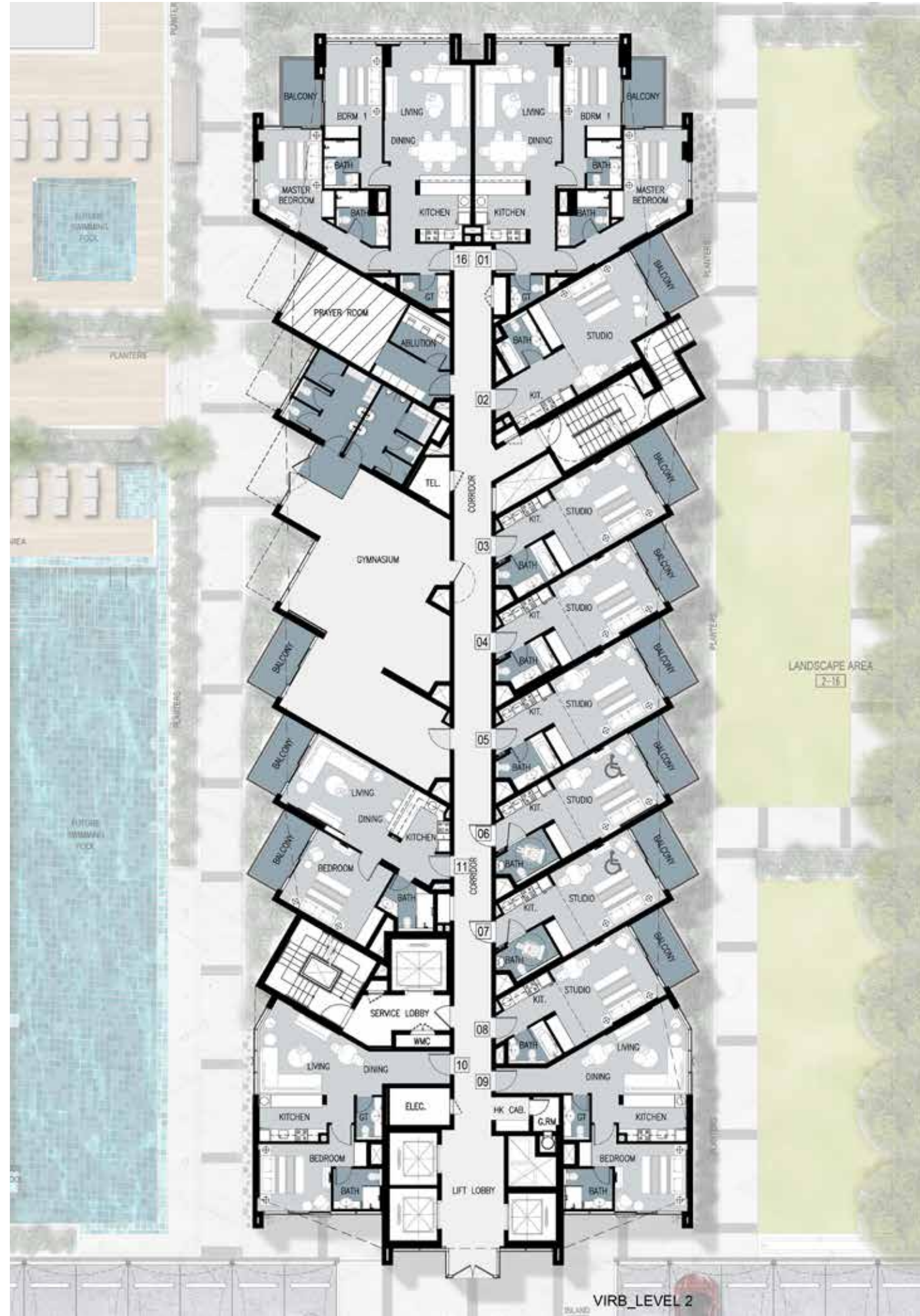
LEVELS 10 and 11



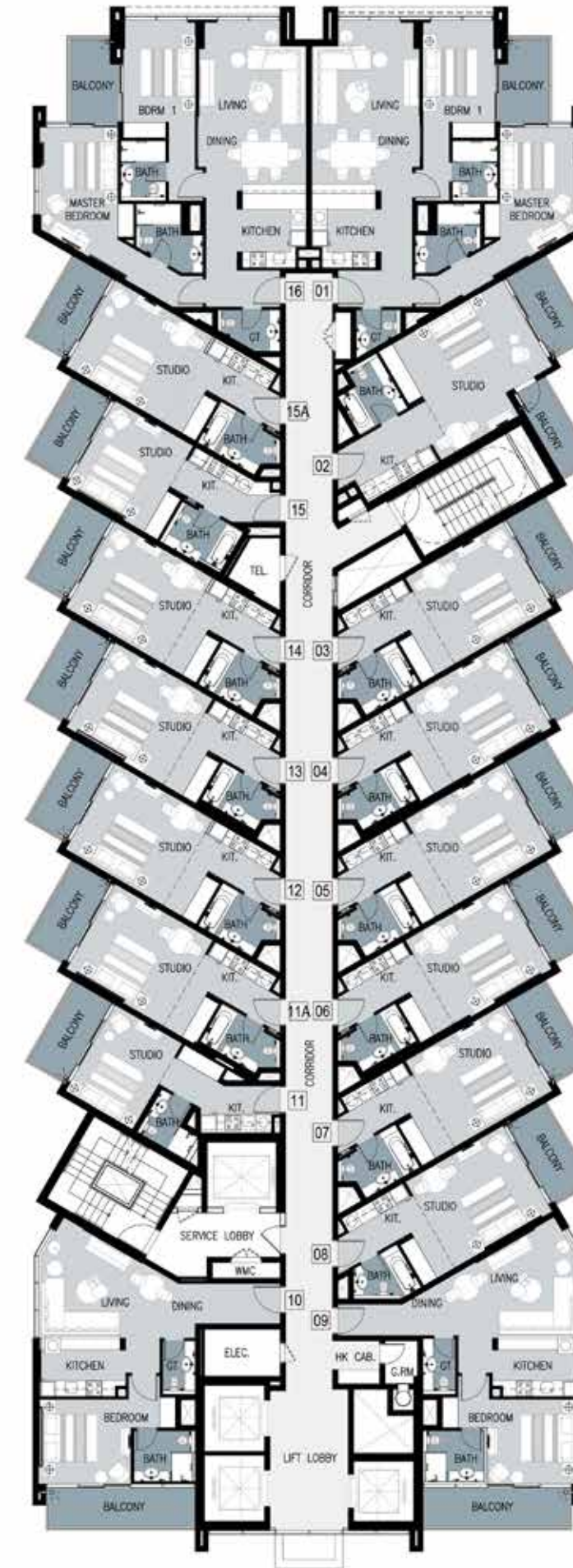
LEVEL 14

TYPICAL FLOOR PLANS

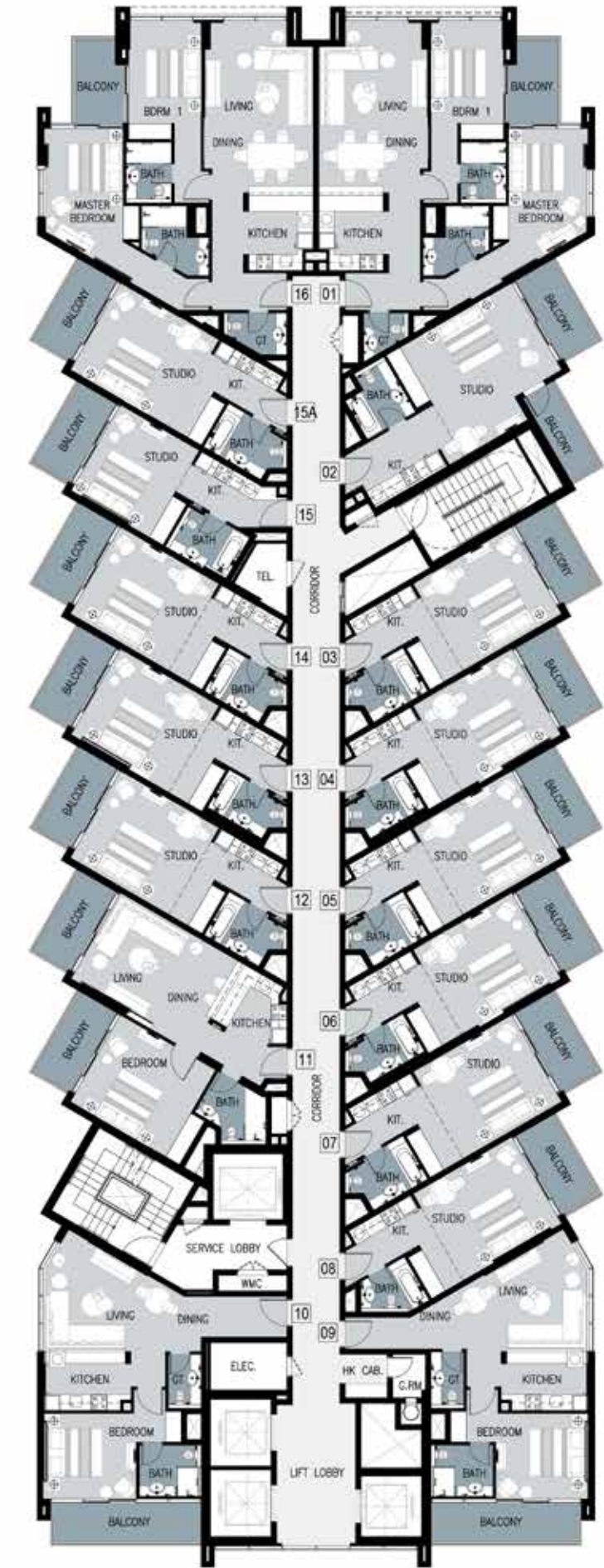
TOWER B
SERVICED APARTMENTS



LEVEL 2



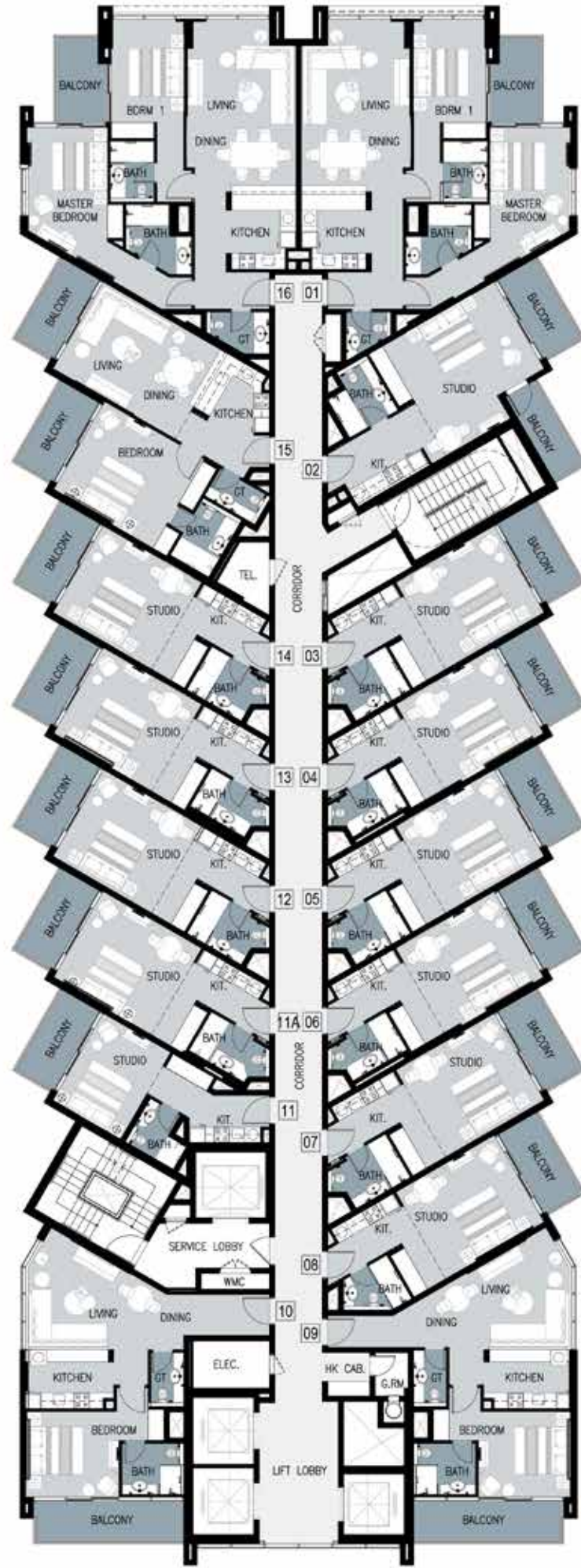
LEVELS 3, 4, 10 and 12



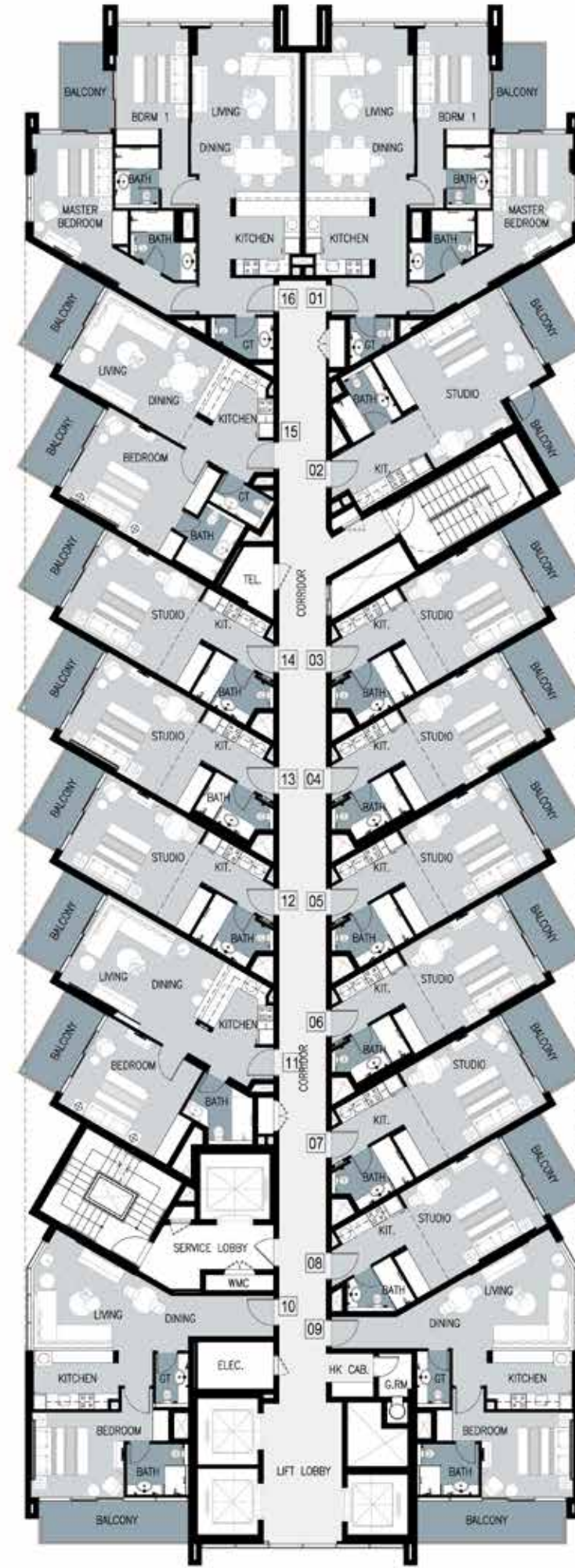
LEVELS 5, 6 and 8

TYPICAL FLOOR PLANS

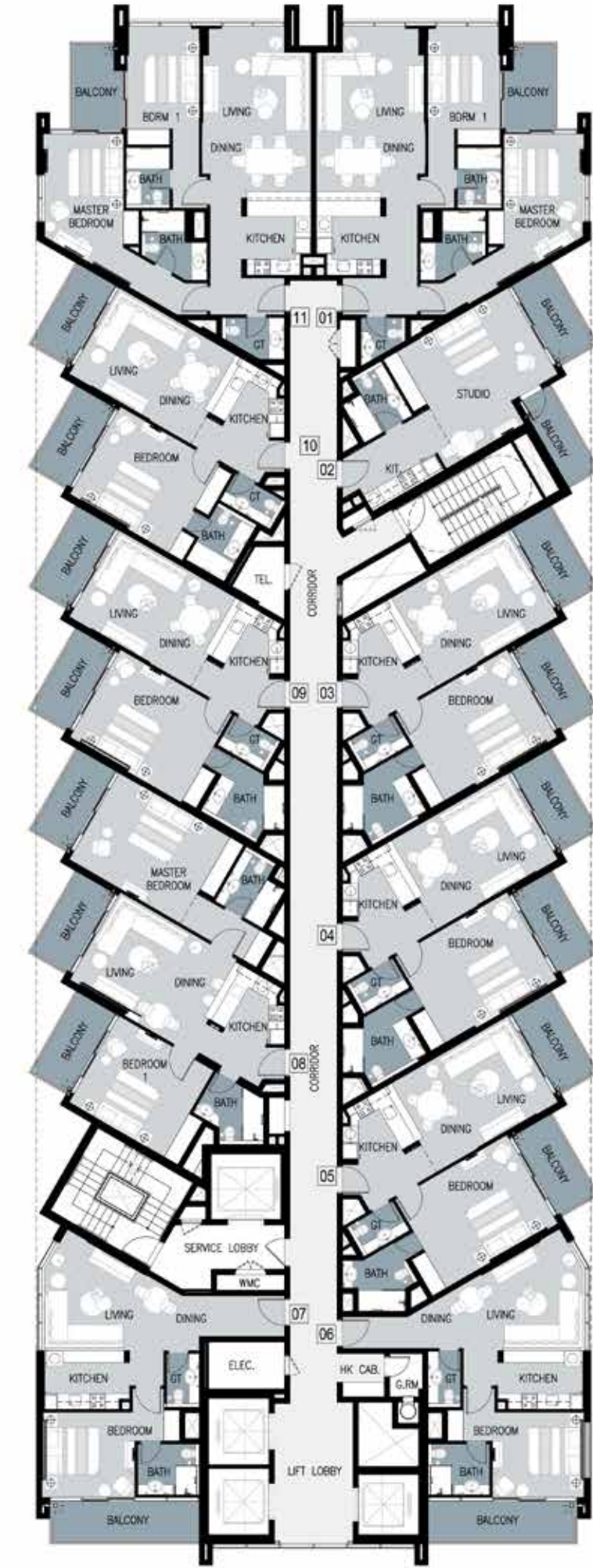
TOWER B
SERVICED APARTMENTS



LEVELS 7, 9 and 13



LEVEL 11



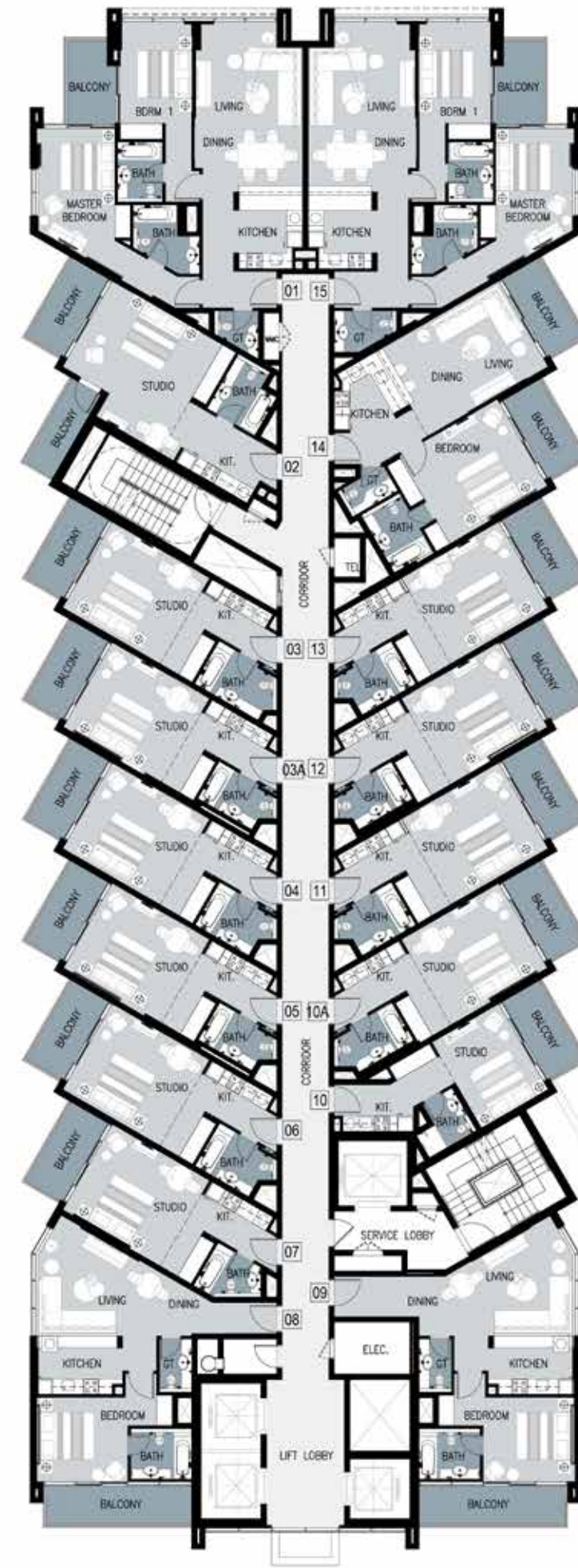
LEVEL 14

TYPICAL FLOOR PLANS

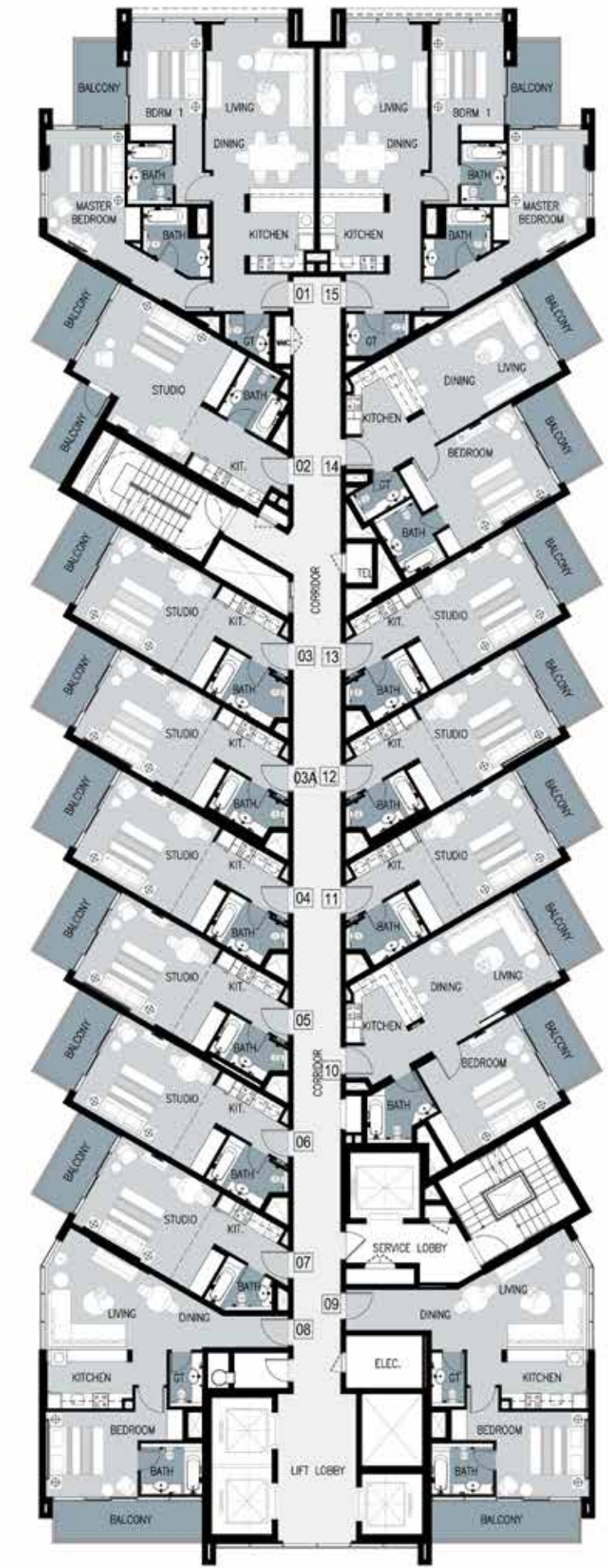
TOWER C
RESIDENCES



LEVEL 2



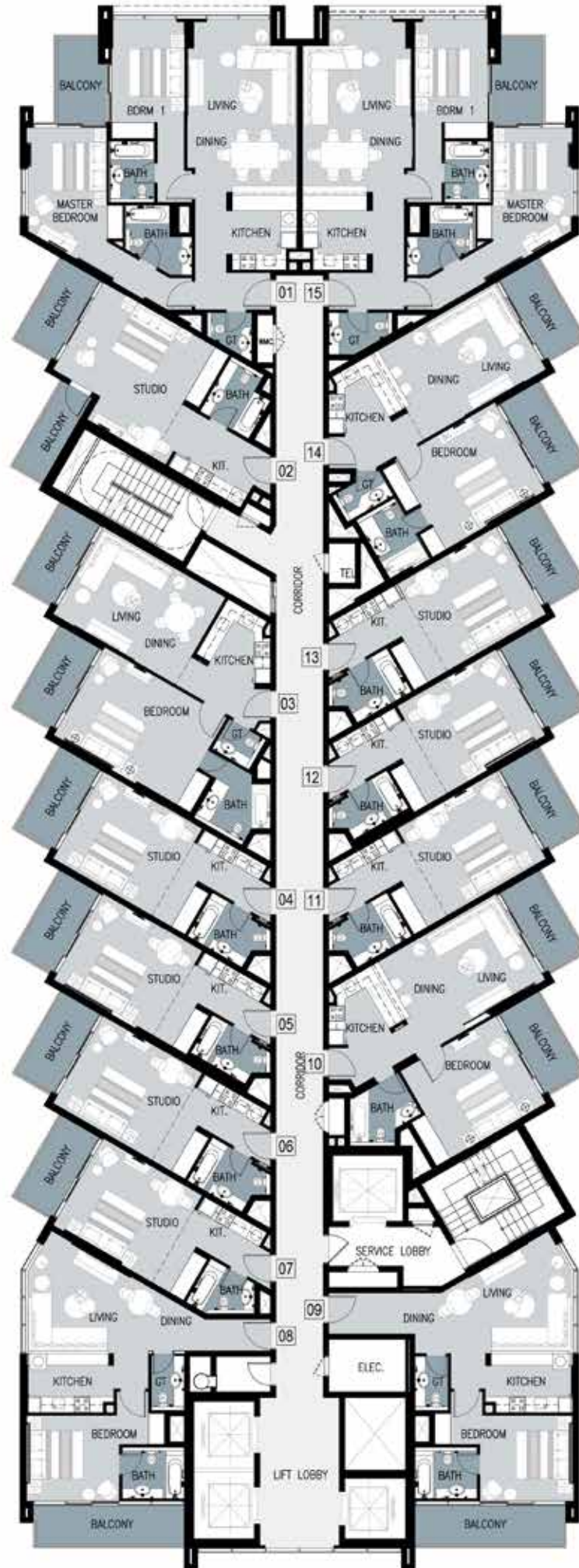
LEVEL 3



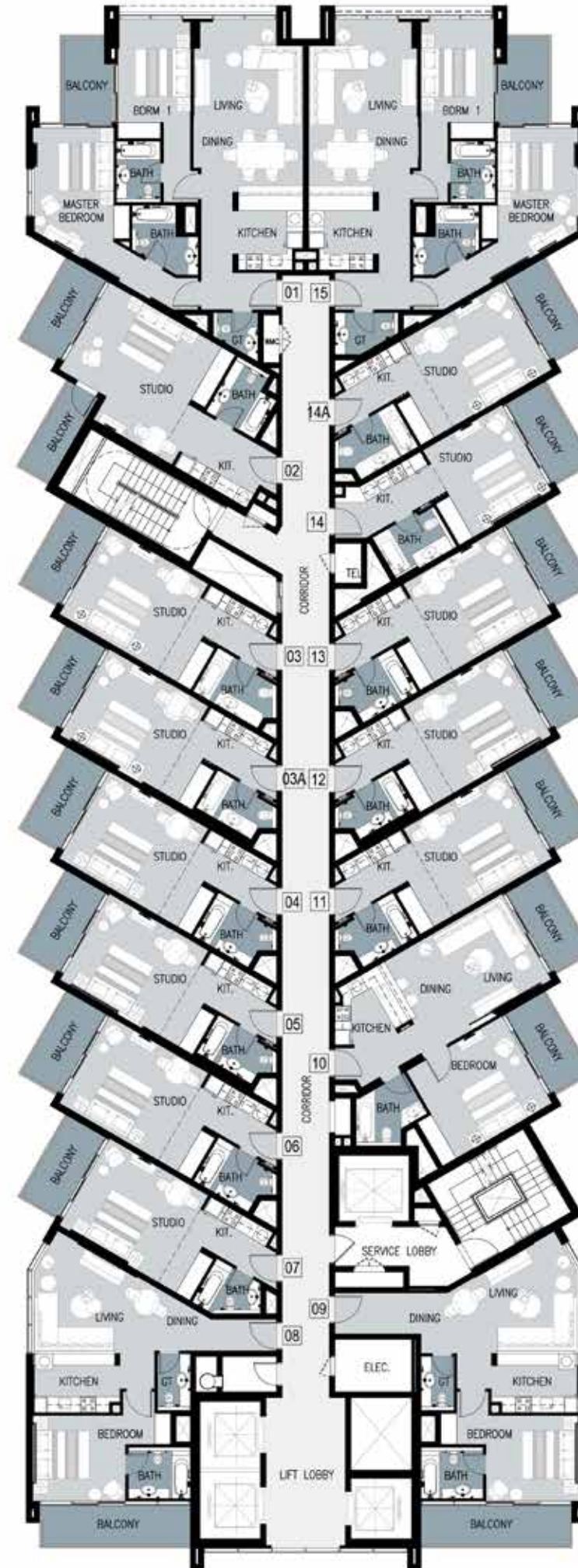
LEVELS 4, 5, 7, 9, 10 and 12

TYPICAL FLOOR PLANS

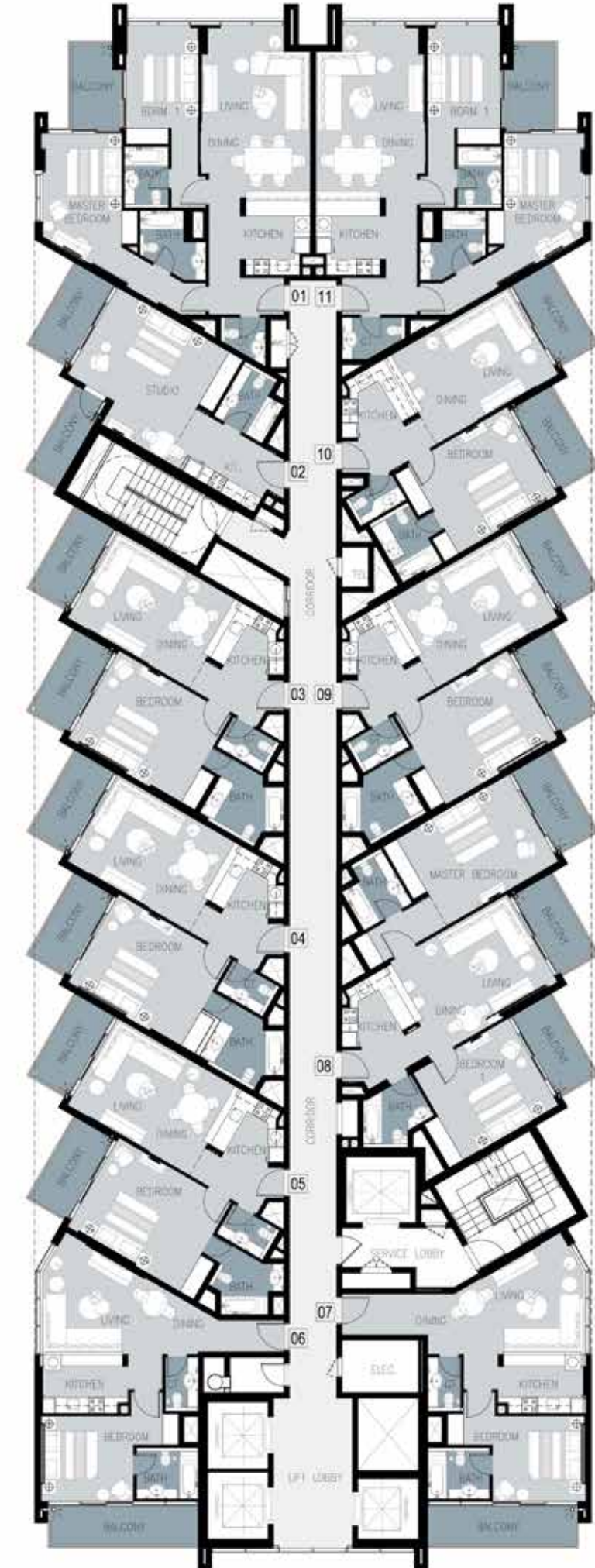
TOWER C
RESIDENCES



LEVELS 6, 11 and 13



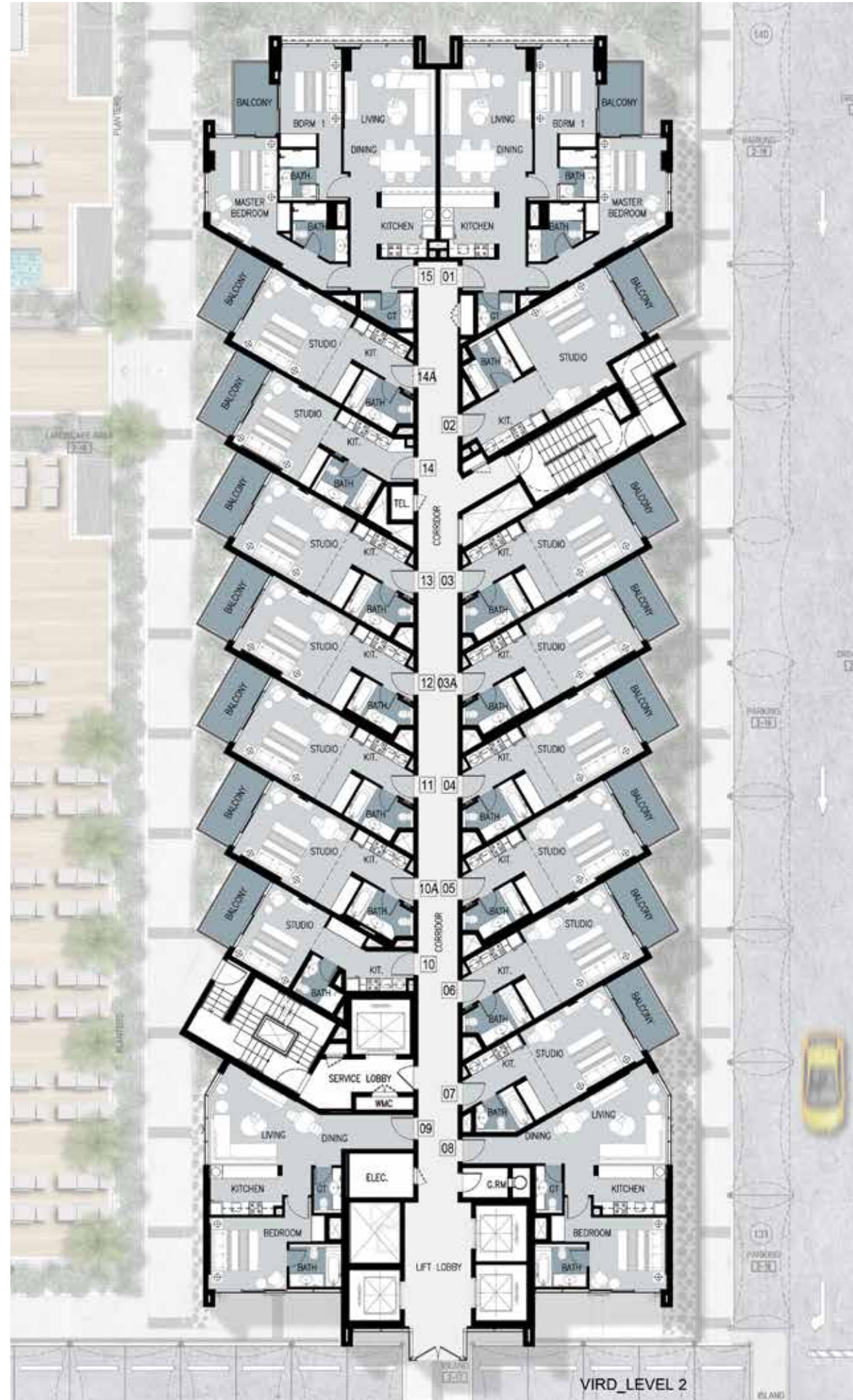
LEVEL 8



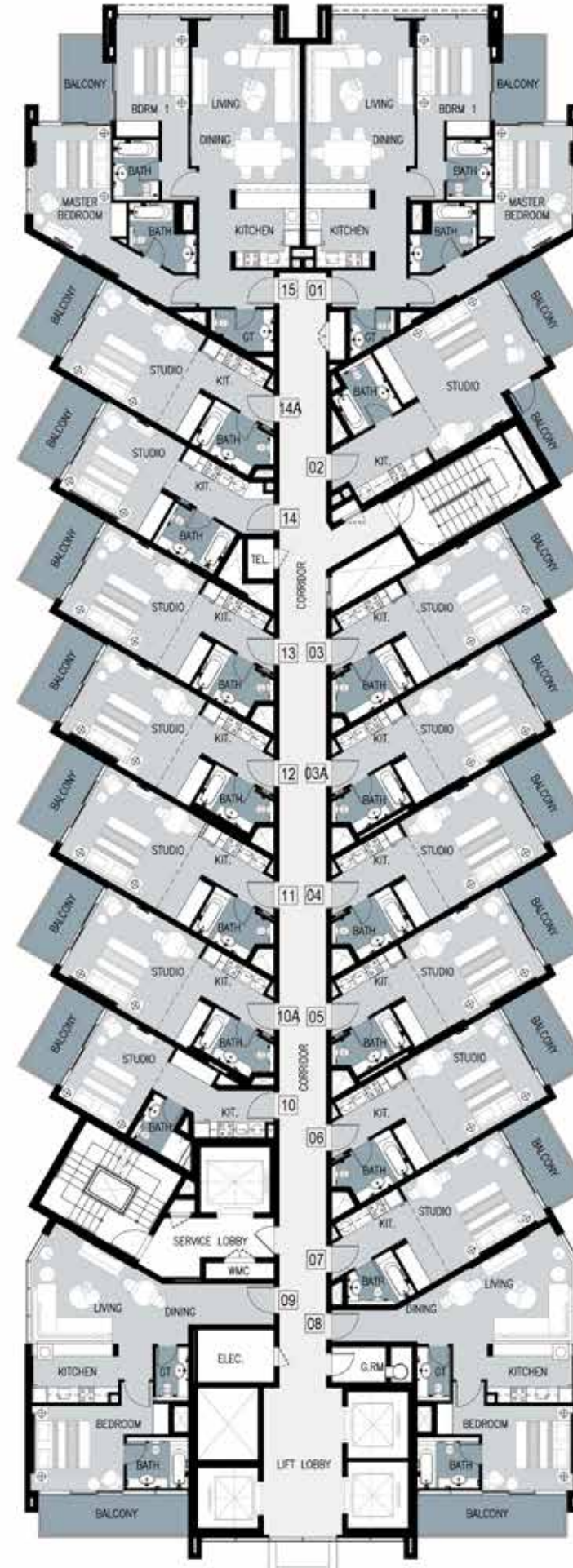
LEVEL 14

TYPICAL FLOOR PLANS

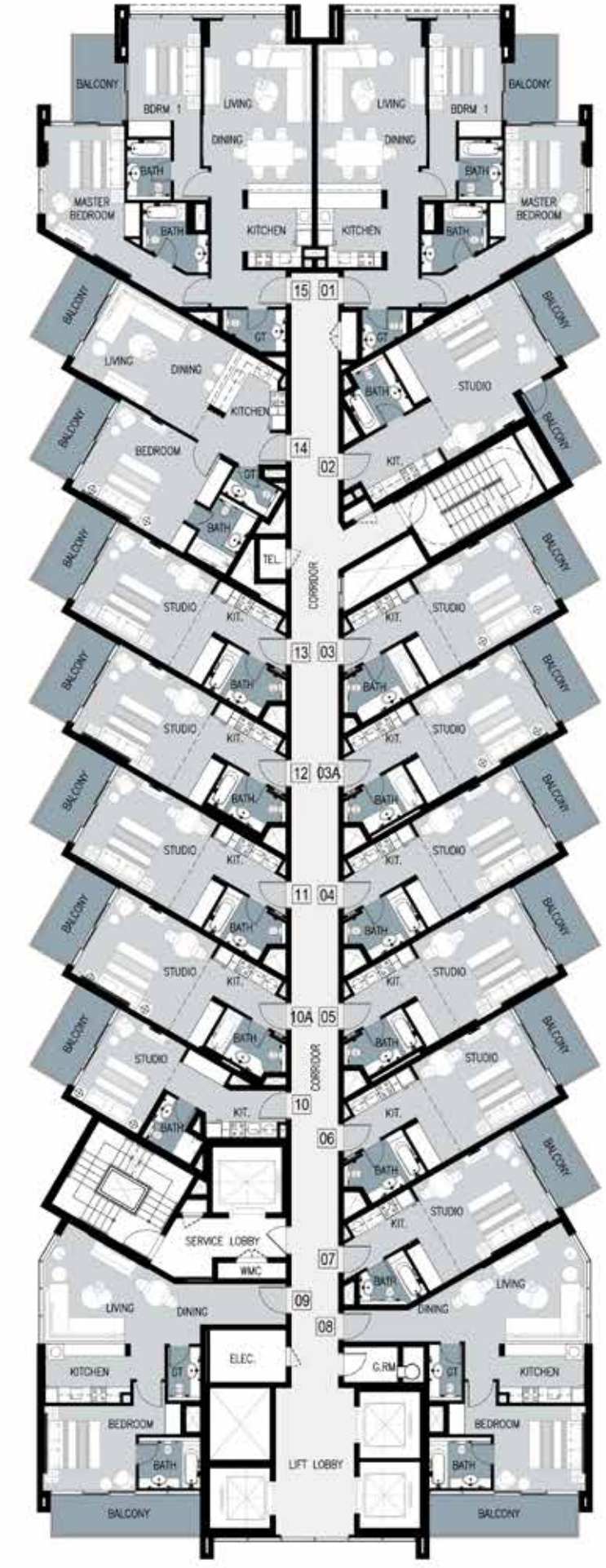
TOWER D
RESIDENCES



LEVEL 2



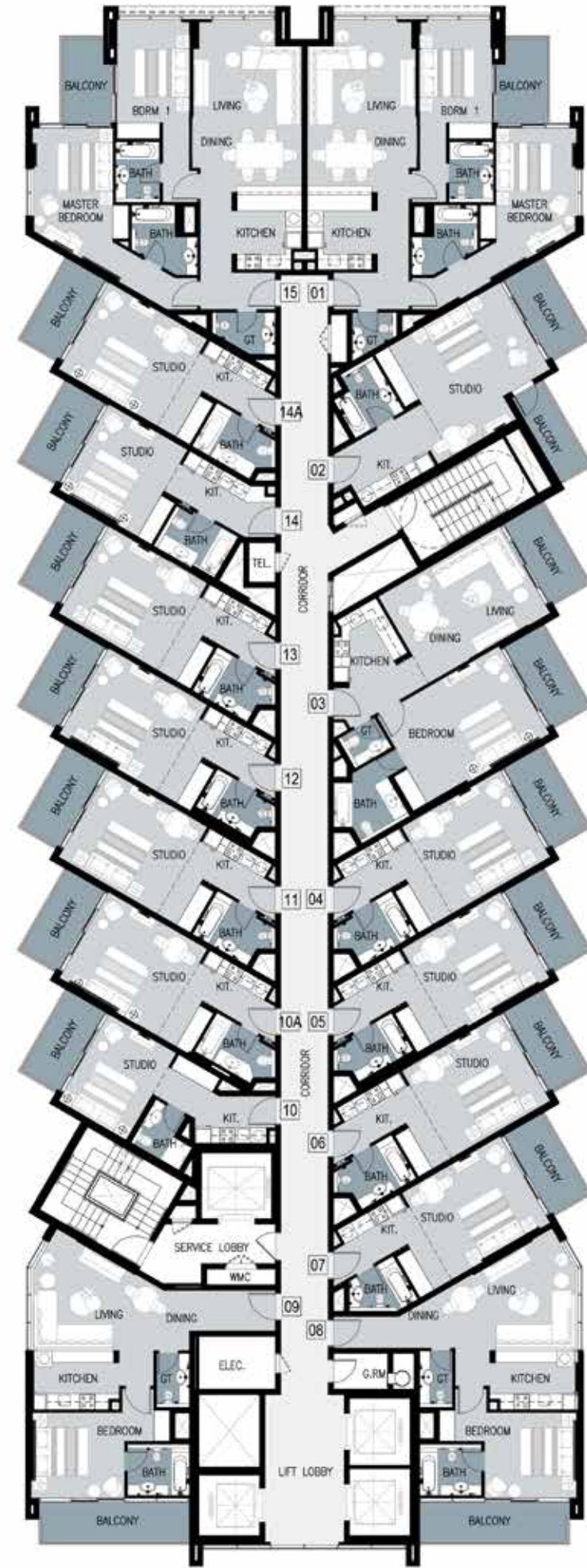
LEVELS 3, 4, 5, 6, 9 and 13



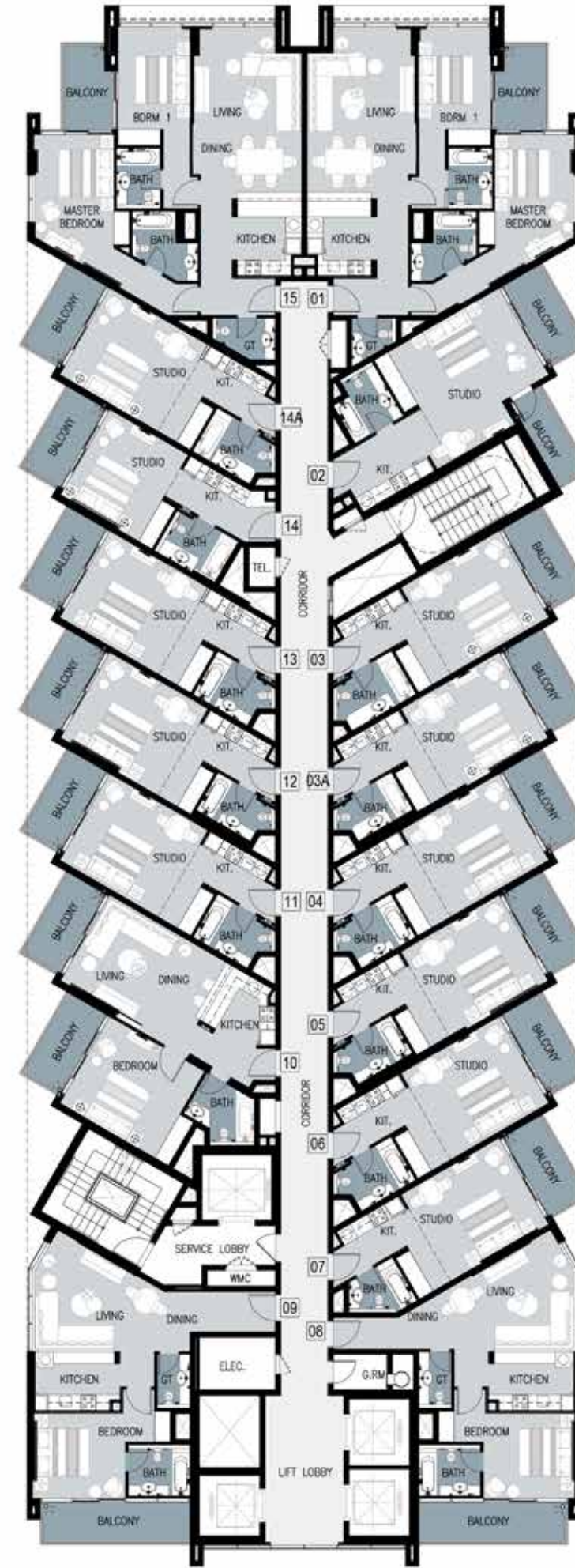
LEVEL 7

TYPICAL FLOOR PLANS

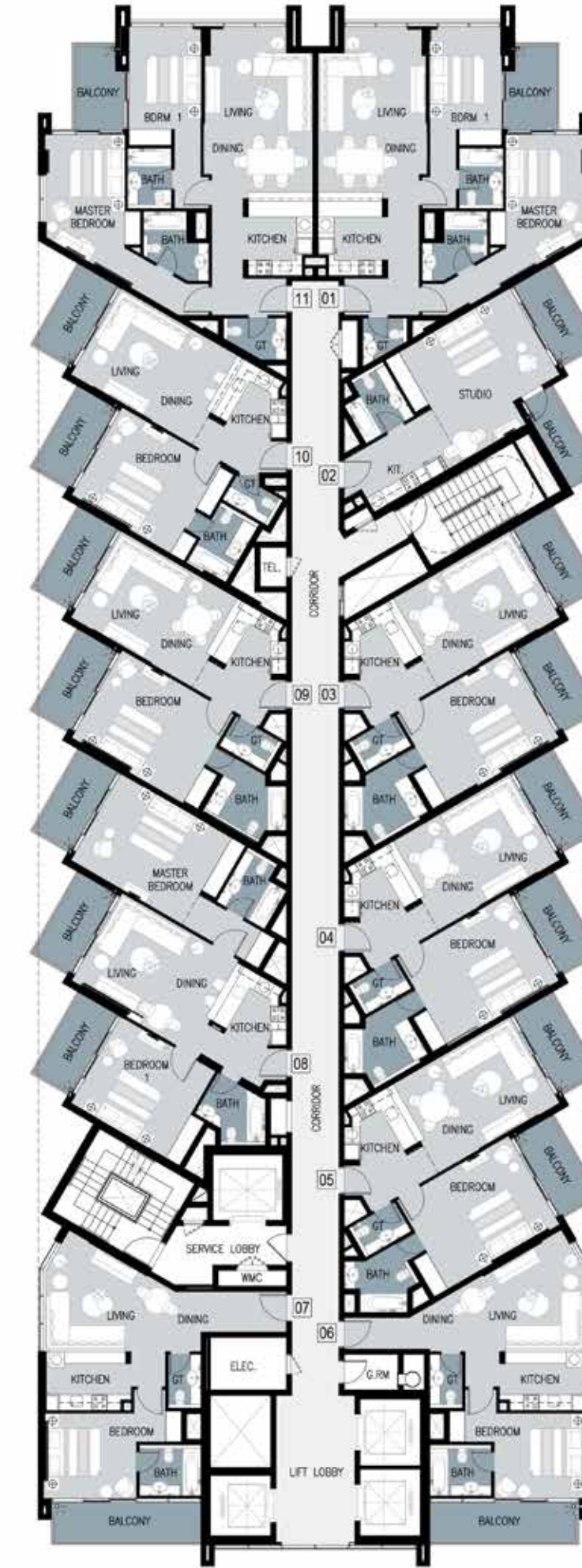
TOWER D
RESIDENCES



LEVEL 8



LEVELS 10, 11 and 12

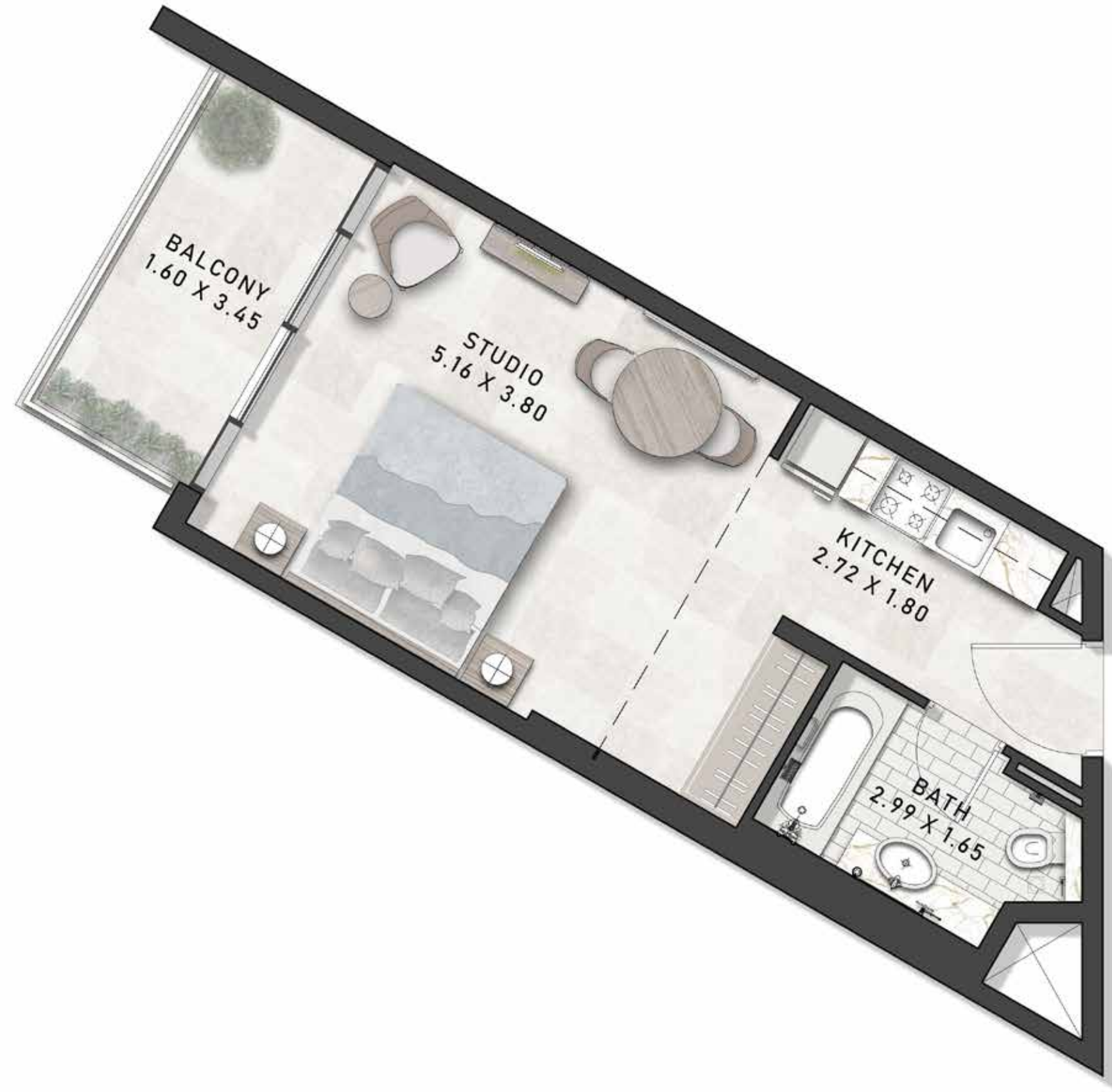


LEVEL 14



UNIT PLAN

STUDIO

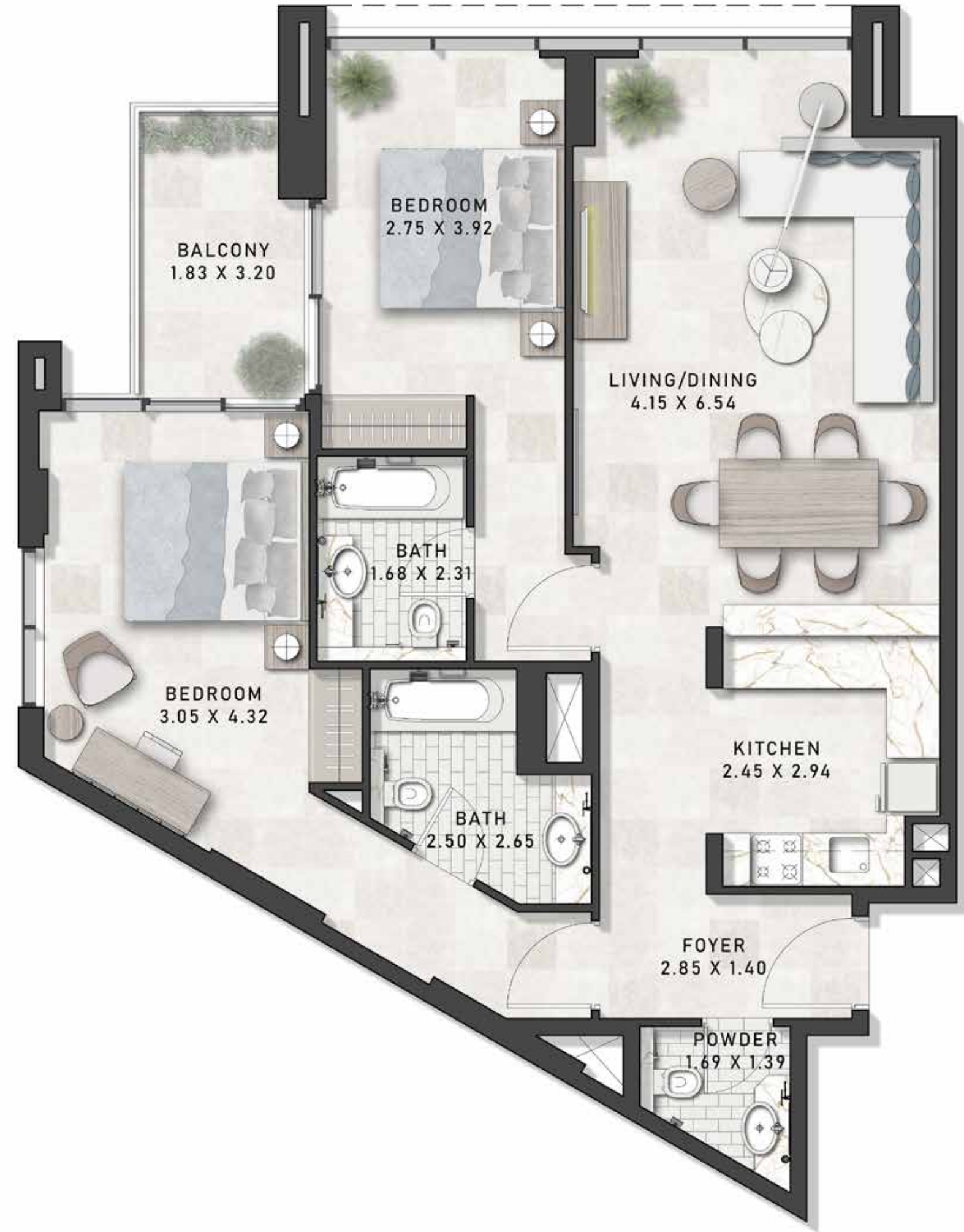


ONE-BEDROOM

TYPE-1

ONE-BEDROOM

TYPE-2



TWO-BEDROOM



CONTACT US

Mobile: +971 52 554 9435

Email: info@propjunction.org

www.propjunction.ae/projects/damac-virdis

ADDRESS

B301, Metha plaza Building,

Oud Metha, Dubai