

# BAY'S EDGE

LUXURY HOTEL APARTMENTS



***DAMAC***  
LIVE THE LUXURY



IN THE HEART  
OF THE BUSTLING DUBAI



RARE HARMONY OF  
WATER VIEWS





FLAWLESS SERVICE



PRESENTING

# BAY'S EDGE

LUXURY HOTEL APARTMENTS







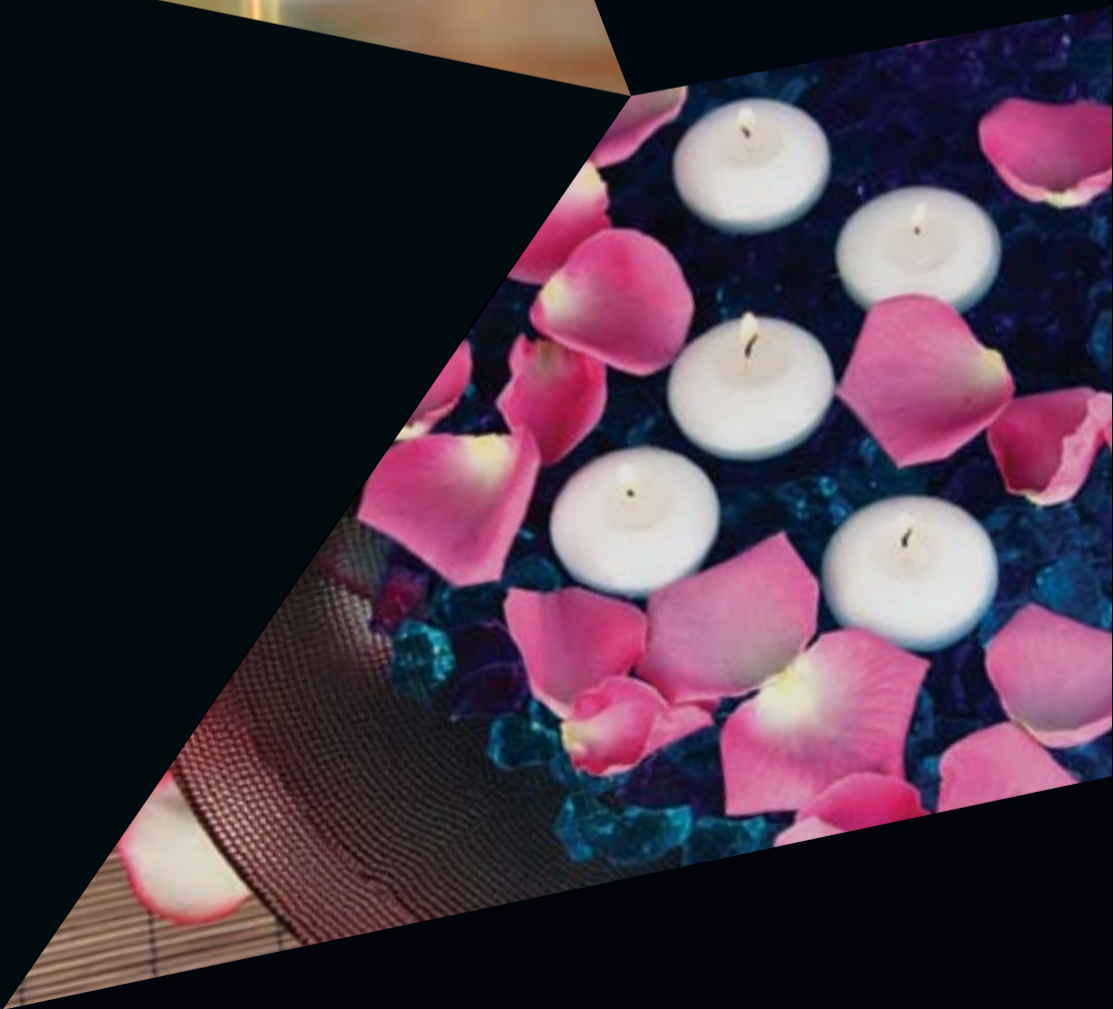


## WELCOME TO A GLITTERING LIFESTYLE

Luxury hotel apartments at Bay's Edge are highly sought-after master creations. Located at the centre of the buzzing area in Dubai, you are treated to exclusive views right from your own home. Calming waterscapes will enthrall your senses and the luxurious interiors withhold no comfort.

Enduring value, timeless sophistication, Bay's Edge was created to be coveted.

- 🌀 Furnished and serviced
- 🌀 220 apartments consisting of studios, 1, 2 and 3 bedroom
- 🌀 Round-the-clock reception and concierge desk
- 🌀 24-hour valet parking service
- 🌀 Grand lounge with a café
- 🌀 Parking on three podium levels
- 🌀 Luxurious spa for men and women
- 🌀 Global dining restaurant
- 🌀 State-of-the-art gymnasium
- 🌀 Temperature-controlled swimming pool





## THE PERFECT SETTING

Bay's Edge is situated within walking distance of some of the most prestigious landmarks and attractions that Dubai has to offer. This is one of the most sought-after locations in the city. Gleaming icons, resplendent nightlife; this is where the high-life begins.

Fine dining restaurants and cafés

Shopping malls

Landmark icons

Dubai International Financial Centre

World-class medical facilities

Art galleries



**BAY'S EDGE**

- Burj Al Arab - World's most luxurious hotel - 15 minutes
- Palm Jumeirah - 20 minutes
- Shk. Zayed road - 5 minutes
- Dubai International Financial Centre - 5 minutes
- Iconic landmarks in Business District & Dubai Mall just a walk away
- Meydan racecourse - 10 minutes
- Dubai International Airport - 10 minutes



Owning a DAMAC Property is not only about making a strong investment, it is about making a lifestyle choice. For more than a decade DAMAC Properties has been delivering iconic and desirable luxury residences throughout the region. From Dubai to Beirut, Abu Dhabi to Jeddah and Doha to Amman, DAMAC Properties is at the forefront of exquisite design, with the highest standards of customer service and excellence. With a proven track record of over 37 buildings with 7,817 units delivered and 66 buildings with 12,100 units under construction, DAMAC Properties is established, chosen and trusted as the largest private luxury developer in the Middle East. You can be sure that DAMAC Properties will deliver a brilliant lifestyle for your entire family at Bay's Edge.



THE DAMAC LIFE



Your apartment brings together the luxuries of a world-class hotel with the homely comforts of family living. The furnished properties come complete with state-of-the-art amenities and all the services you would expect from a luxury hotel stay.



LUXURY IS FOREVER





## POLISHED TO PERFECTION

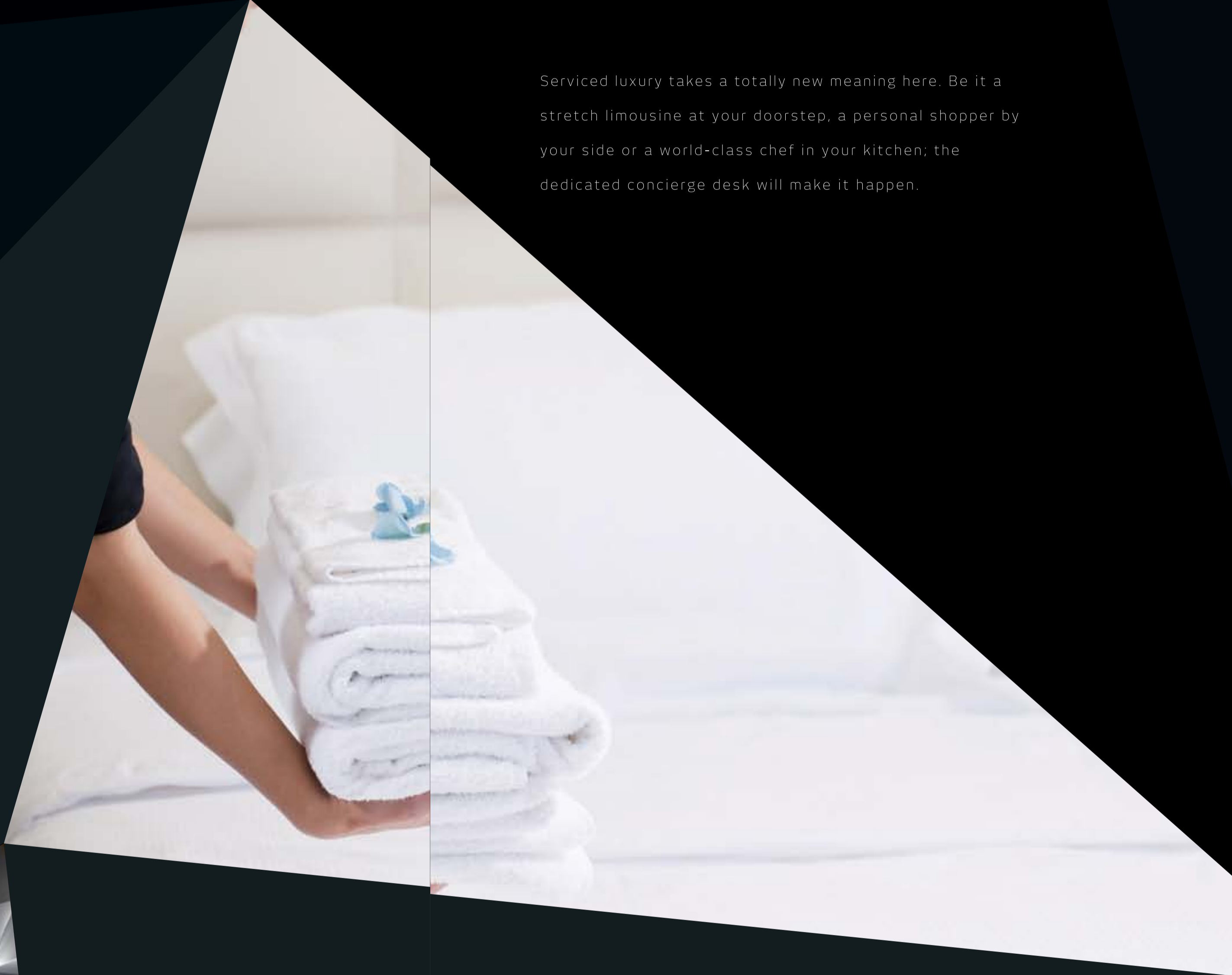
Relax in the lap of luxury in the comfort of your home.  
You can see attention to detail in every aspect of this luxury  
icon; be it the architectural finesse, thoughtful space  
allocation or the endless luxurious appointments.





EVERY WISH,  
GIFT-WRAPPED

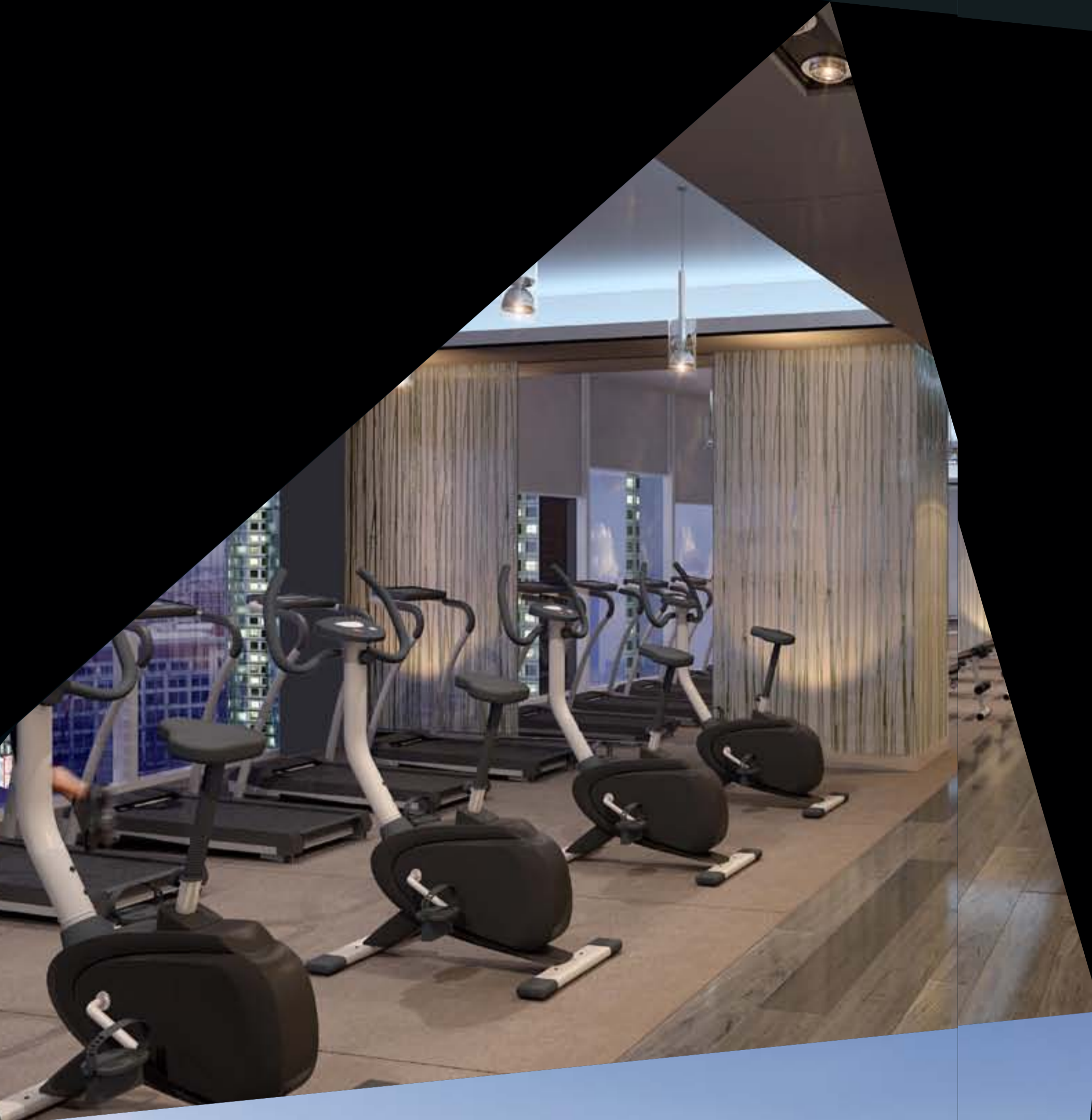
Serviced luxury takes a totally new meaning here. Be it a stretch limousine at your doorstep, a personal shopper by your side or a world-class chef in your kitchen; the dedicated concierge desk will make it happen.



Calming azure waters in the backdrop as you hold a casual business meeting... or a gentle breeze caressing you while you enjoy breathtaking views with your loved one... being by the pool becomes an inspiration; a secret spot you can escape to, every day.



SEEK OUT CLARITY



## PRECIOUS 'ME' TIME

After a hard day at work, re-energize with a work-out at the state-of-the-art gymnasium. Followed by a calming spell in the luxurious sauna and jacuzzi.







## CULTIVATE A FINE TASTE

Explore diverse flavours from around the world at our multi-cuisine restaurant within Bay's Edge. And you can head down to the waterfront retail plaza for some world-class shopping.





# WELL-EARNED APPRECIATION

Your apartment offers you the ultimate in luxury when you live in it and premium returns when you don't. By being part of the unique rental pool, you can ensure that you get a regular yield.



## UNIT FEATURES

- ◆ Kitchen cabinets and countertops with refrigerator, washing machine with dryer option, hob, oven
- ◆ Balconies as per unit plan
- ◆ Wardrobes in bedrooms
- ◆ Tiled bathrooms, en-suites and guest toilets
- ◆ Shower or bath tub with handle and shower in each bathroom
- ◆ Electrical shaver point with mirror in master bathroom
- ◆ Vanity Units and mirrors
- ◆ Centrally air conditioned
- ◆ Double glazed windows
- ◆ E-vision or equivalent and telephone connection points
- ◆ Provision for High speed internet access
- ◆ Ceramic Tiling

## UNIT FURNITURE

- ◆ Double bed with mattress in Studio & 1 Bedroom apartments
- ◆ 1 double bed in the Master bedroom & 2 single beds with mattresses in the other bedroom(s) of the 2 & 3 Bedroom apartments
- ◆ Clean sheets, pillows and bed covers in appropriate portions
- ◆ Curtains
- ◆ Bedside table with drawer

### **The following furniture in each living room and studio:**

Breakfast table in studio apartments

Dining table with chairs in 1, 2 and 3 bedroom apartments

Settee or armchair

Couch in 1,2 & 3 bedroom apartments

Coffee table

Television

Glass and tableware

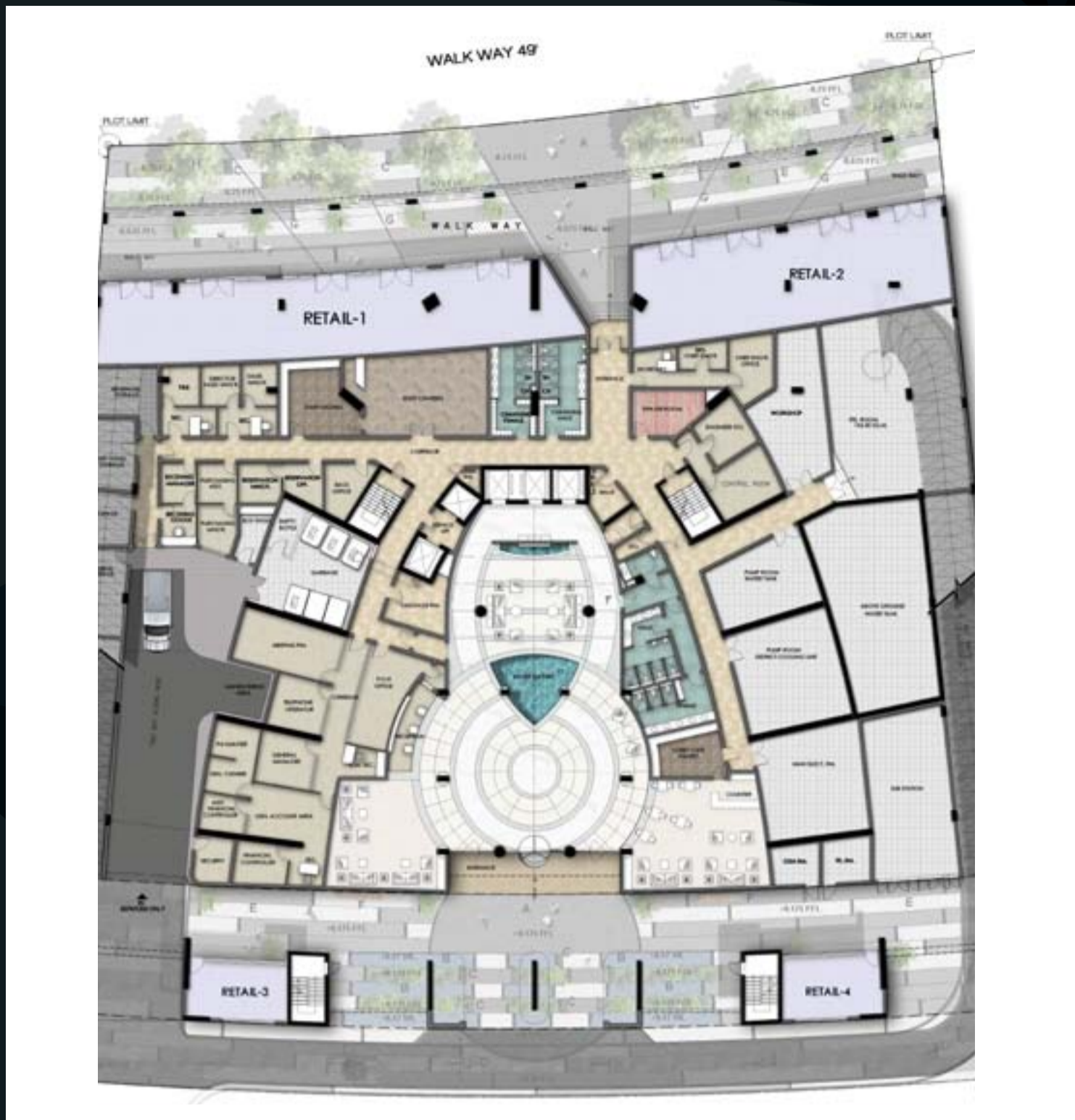
Cooking utensils

\* Unless stated above, all accessories like wallpaper, chandeliers, furniture, electronics, white goods, curtains, decorative wall elements, wall mirrors, walk in closets, mirror, television etc. displayed in the show apartment are not part of the Standard Unit and exhibited for illustration purposes only

## UNIT SERVICES

- ◆ Full apartment cleanup – three times a week
- ◆ Replacement of bed linen and towels – twice a week
- ◆ Daily supply of basic toiletries and towel change
- ◆ Bouquet of television channels
- ◆ Pest Control in the unit
- ◆ Maintenance and repair of furnishings, fixtures and equipment (but not refurbishment or replacement thereof)

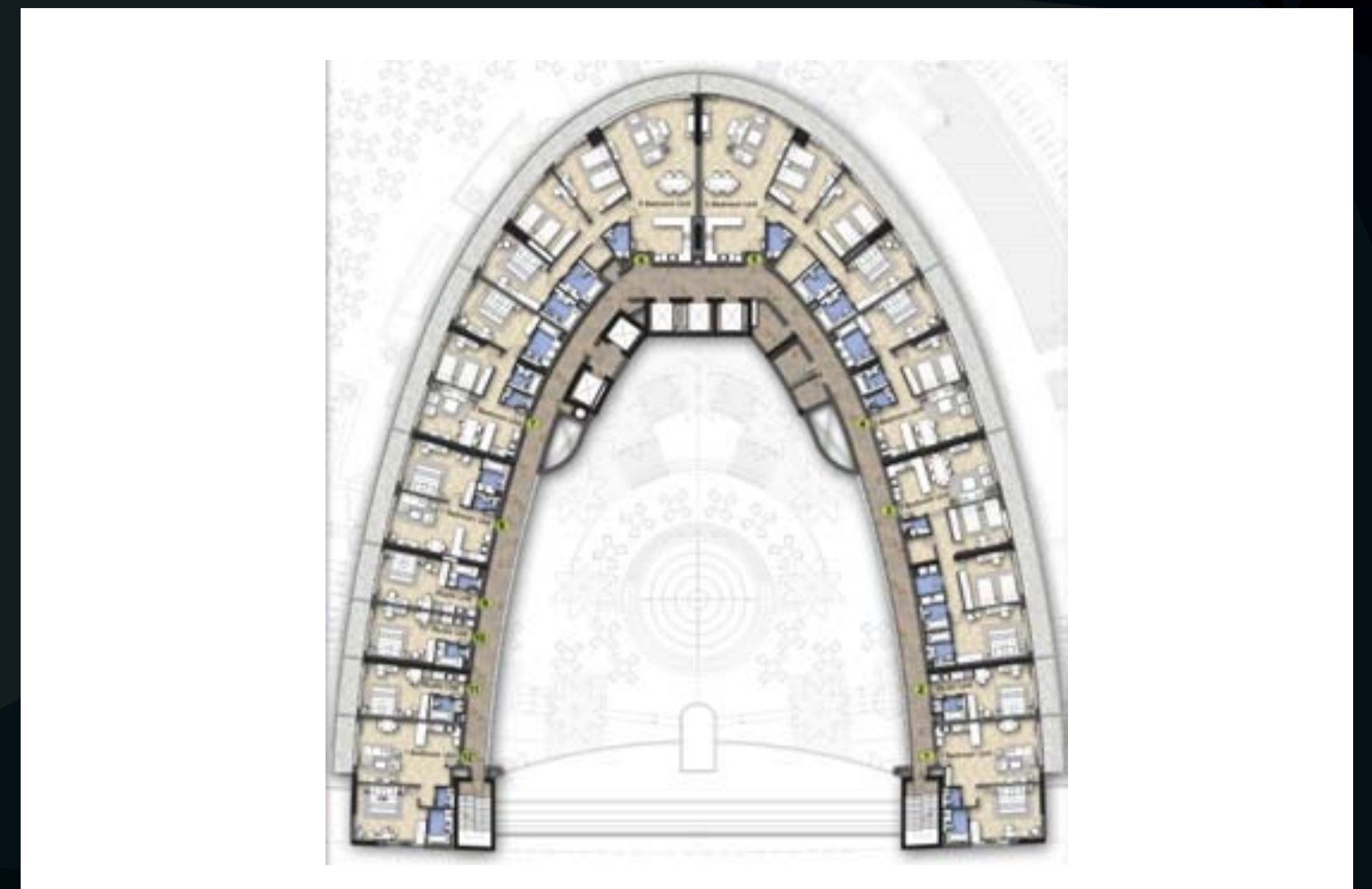
GROUND FLOOR PLAN



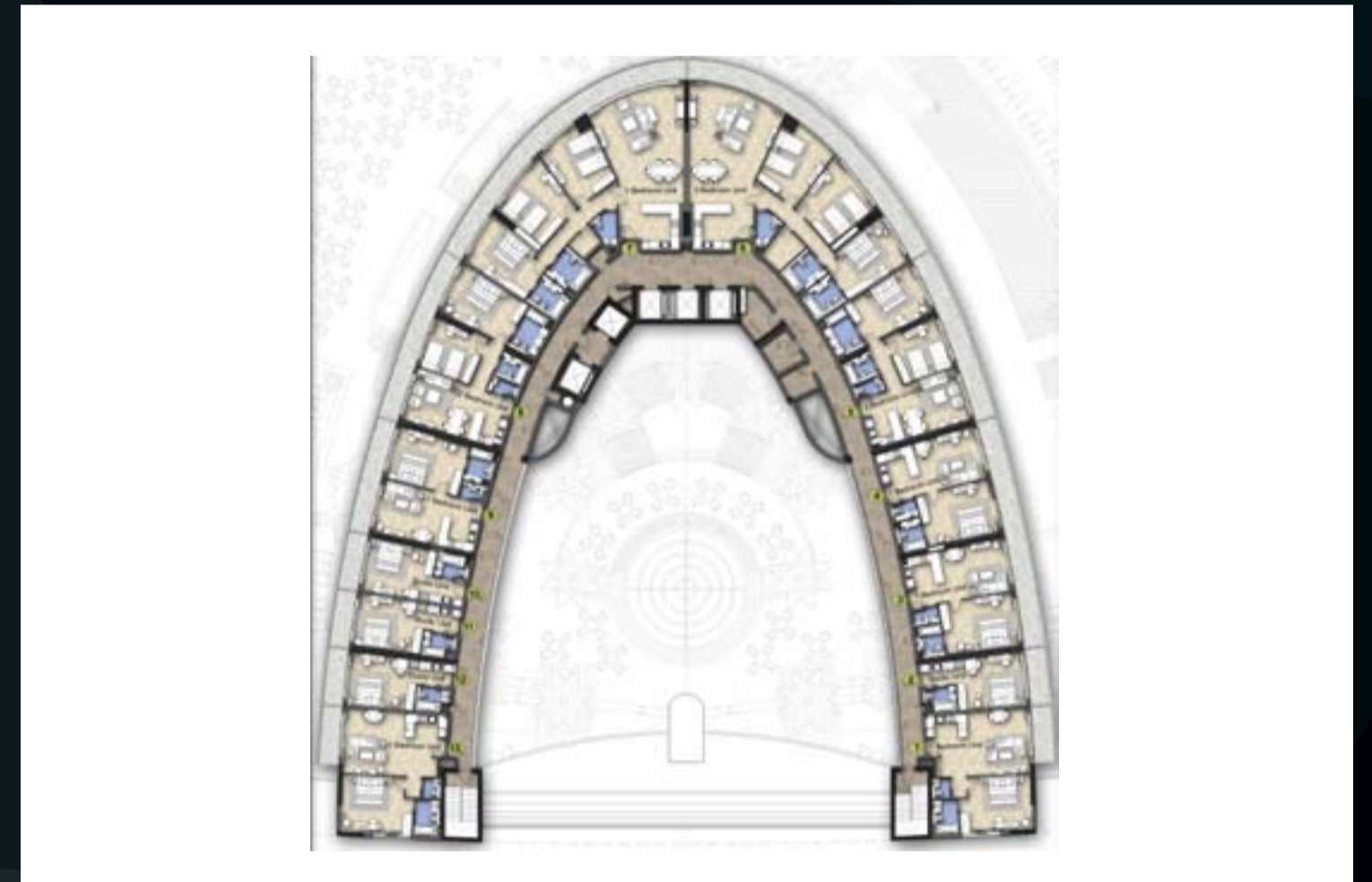
SPA FLOOR



TYPICAL FLOOR PLAN  
5TH - 9TH



10TH - 21ST



22ND



Disclaimer: All pictures, plans, layouts, information, data and details included in this brochure are indicative only and may change at any time up to the final "as built" status in accordance with final designs of the project and regulatory approvals and planning permissions.

Disclaimer: All pictures, plans, layouts, information, data and details included in this brochure are indicative only and may change at any time up to the final "as built" status in accordance with final designs of the project and regulatory approvals and planning permissions.

[www.damacproperties.com](http://www.damacproperties.com)