

DUBAI HILLS

ESTATE

PALM HILLS

FLOOR PLANS

ELIE SAAB × EMAAR

DUBAI HILLS ESTATE

PALM HILLS

5 BEDROOM FLORA VILLA

SUITE AREA	4498.24 SQ.FT.	417.90 SQ.M.
GARAGE	615.37 SQ.FT.	57.17 SQ.M.
TERRACE AREA	75.78 SQ.FT.	7.04 SQ.M.
BALCONY	321.95 SQ.FT.	29.91 SQ.M.
TOTAL AREA	5511.34 SQ.FT.	512.02 SQ.M.
ROOF TERRACE	361.88 SQ.FT.	33.62 SQ.M.

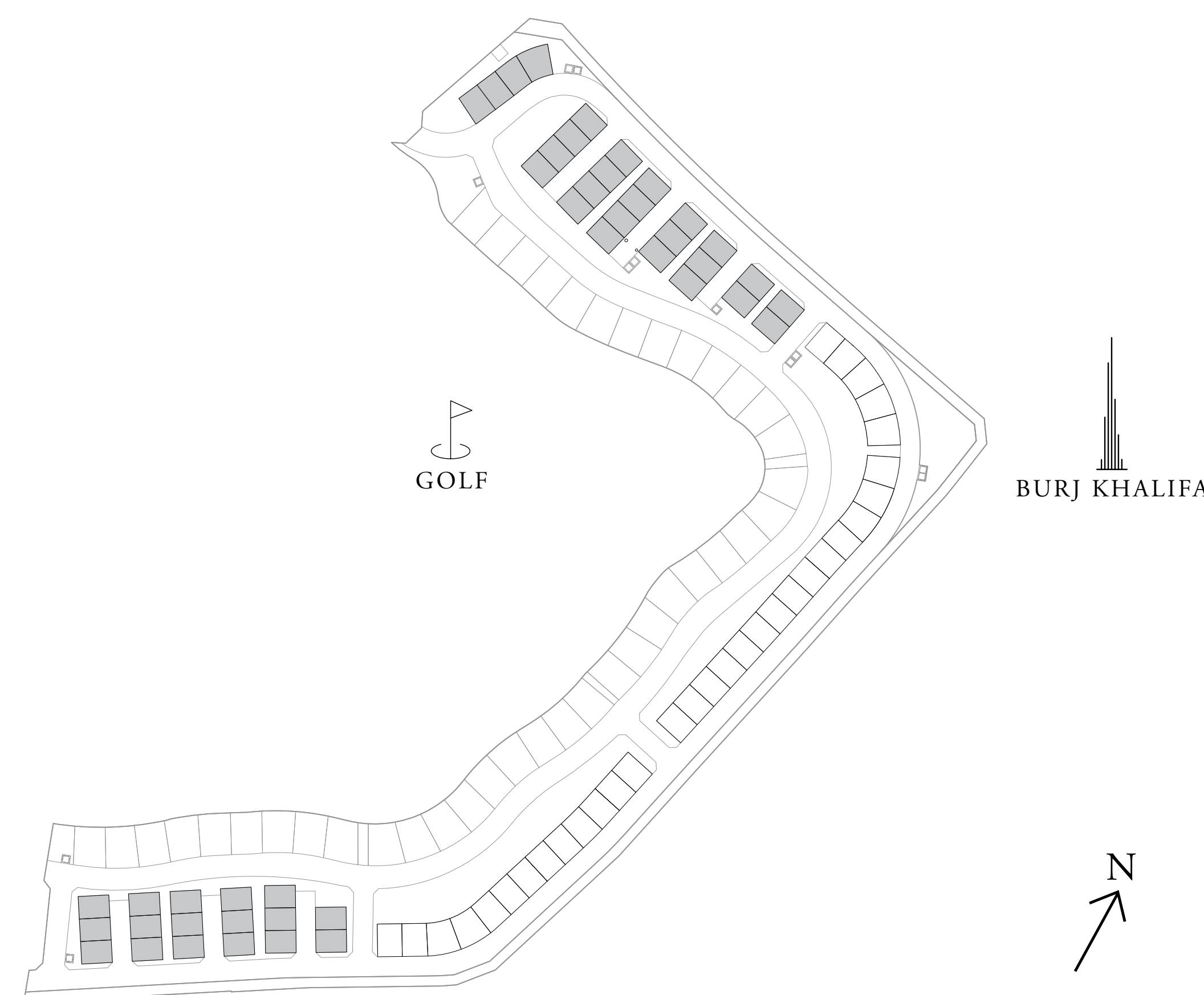


GROUND FLOOR

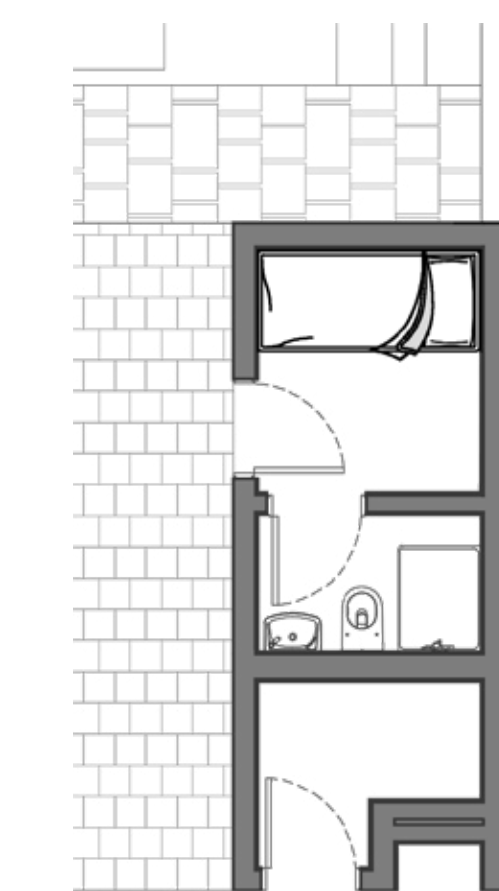


FIRST FLOOR

KEY PLAN



ROOF FLOOR



DRIVER ROOM
(OPTIONAL PROVISION)

FLOOR PLAN 1. All dimensions are in imperial and metric, and measured from finish to finish excluding construction tolerances. 2. All materials, dimensions, and drawings are approximate only. 3. Information is subject to change without notice, at developer's absolute discretion. 4. Actual area may vary from the stated area. 5. Drawings not to scale. 6. All images used are for illustrative purposes only and do not represent the actual size, features, specifications, fittings, and furnishings. 7. The developer reserves the right to make revisions / alterations, at its absolute discretion, without any liability whatsoever.

DUBAI HILLS ESTATE

PALM HILLS

5 BEDROOM BLOOM VILLA

SUITE AREA	5546.32 SQ.FT.	515.27 SQ.M.
GARAGE	674.68 SQ.FT.	62.68 SQ.M.
TERRACE AREA	50.05 SQ.FT.	4.65 SQ.M.
BALCONY	302.57 SQ.FT.	28.11 SQ.M.
TOTAL AREA	6573.62 SQ.FT.	610.71 SQ.M.
ROOF TERRACE	655.63 SQ.FT.	60.91 SQ.M.

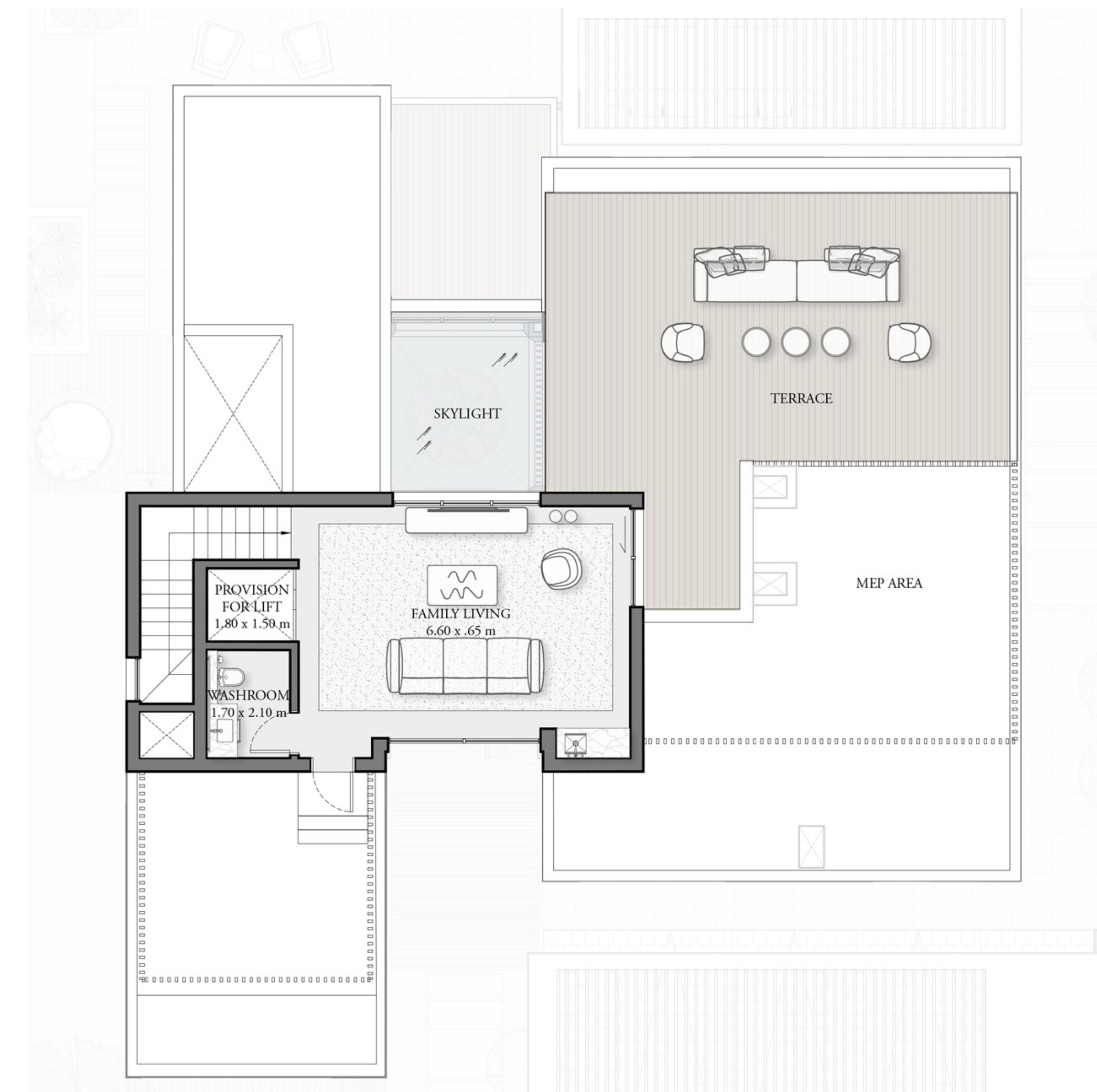
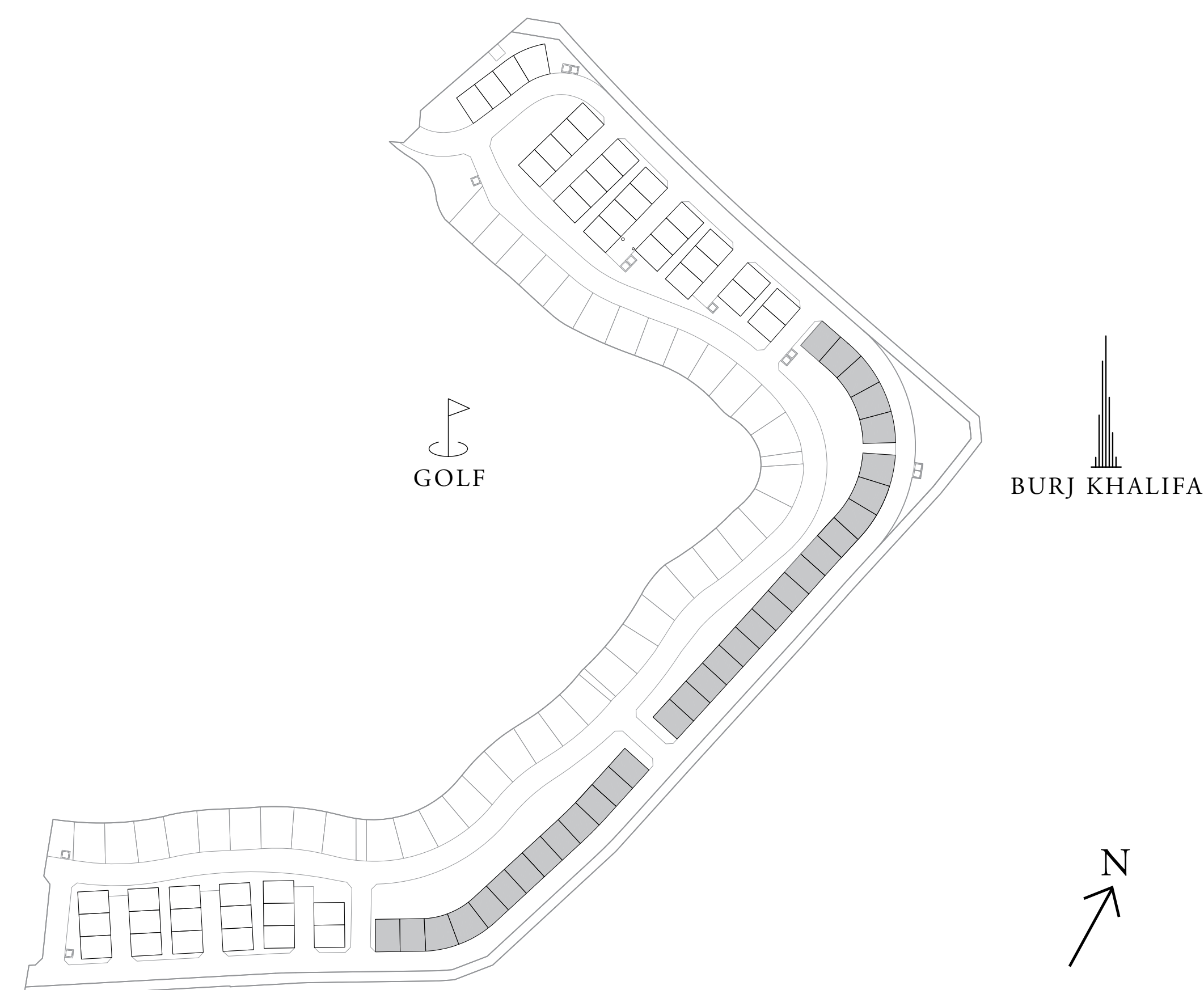


GROUND FLOOR

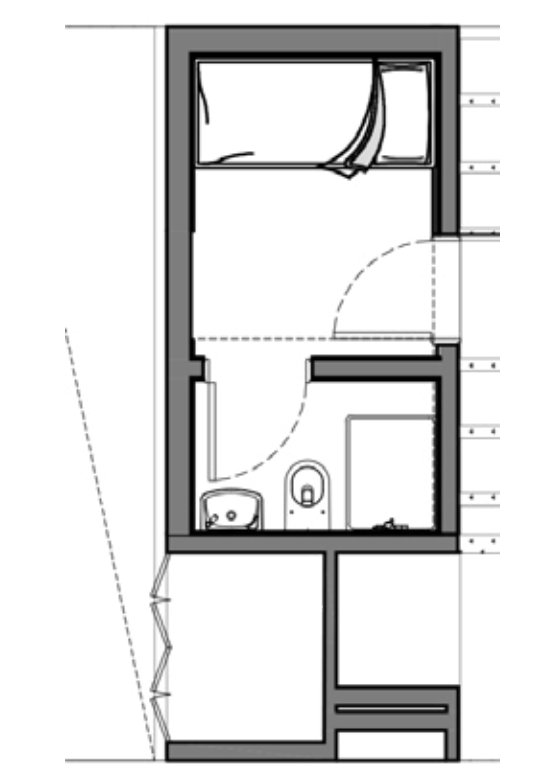


FIRST FLOOR

KEY PLAN



ROOF FLOOR



DRIVER ROOM
(OPTIONAL PROVISION)

FLOOR PLAN 1. All dimensions are in imperial and metric, and measured from finish to finish excluding construction tolerances. 2. All materials, dimensions, and drawings are approximate only. 3. Information is subject to change without notice, at developer's absolute discretion. 4. Actual area may vary from the stated area. 5. Drawings not to scale. 6. All images used are for illustrative purposes only and do not represent the actual size, features, specifications, fittings, and furnishings. 7. The developer reserves the right to make revisions / alterations, at its absolute discretion, without any liability whatsoever.