

A GATEWAY INTO  
A THRIVING CITY



VIDA

RESIDENCES  
DUBAI MALL





**SERVICED APARTMENTS  
WITH UNINTERRUPTED  
VIEWS OF BURJ KHALIFA  
AND THE DUBAI FOUNTAIN**

## FRONT AND CENTRE

Vida Residences Dubai Mall is the perfect upscale addition to Downtown Dubai's sparkling landscape, a lively development that fully embraces the 'live, work, play' lifestyle.



# SEAMLESSLY CONNECTED TO THE DUBAI MALL

Easy access to The Dubai Mall through a dedicated link bridge to enjoy an unmatched shopping and leisure experience.





FUNCTION TERRACE



YOGA PAD

## AMENITIES



CHILDREN'S PLAY AREA



EVENTS DECK





# VIDA

RESIDENCES  
DUBAI MALL

## FLOOR PLANS

TOWER 1

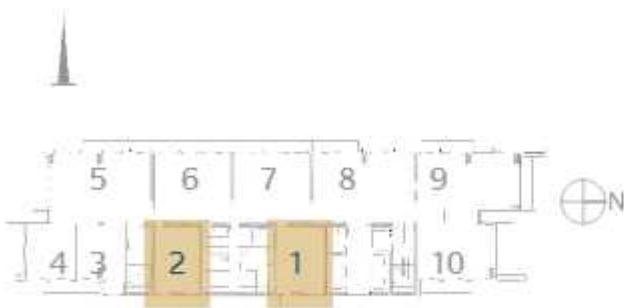




# 1 Bedroom Type 1B.A

Unit 01, 02  
Level 17-38

**VIDA**  
RESIDENCES  
DUBAI MALL



Tower 1

	sq.m	sq.ft.
Suite Area	68.34	735.61
Balcony Area	11.39	122.60
<b>Total Area</b>	<b>79.73</b>	<b>858.321</b>



**FLOOR PLANS** 1. All dimensions are in imperial and metric, and measured to structural elements and exclude wall finishes and construction tolerances. 2. All materials, dimensions, and drawings are approximate only. 3. Information is subject to change without notice, at developer's absolute discretion. 4. Actual area may vary from the stated area. 5. Drawings not to scale. 6. All images used are for illustrative purposes only and do not represent the actual size, features, specifications, fittings, and furnishings. 7. The developer reserves the right to make revisions/alterations at its absolute discretion, without any liability whatsoever.

# 1 Bedroom

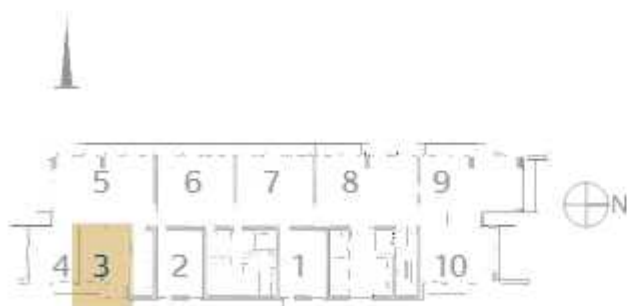
## Type 1B.B

Unit 03

Level 17-38

# VIDA

RESIDENCES  
DUBAI MALL



Tower 1

	sq.m	sq.ft.
Suite Area	63.42	682.65
Balcony Area	7.15	76.96
Total Area	70.57	759.61



**FLOOR PLANS** 1. All dimensions are in imperial and metric, and measured to structural elements and exclude wall finishes and construction tolerances. 2. All materials, dimensions, and drawings are approximate only. 3. Information is subject to change without notice, at developer's absolute discretion. 4. Actual area may vary from the stated area. 5. Drawings not to scale. 6. All images used are for illustrative purposes only and do not represent the actual size, features, specifications, fittings, and furnishings. 7. The developer reserves the right to make revisions/alterations at its absolute discretion, without any liability whatsoever.

# 1 Bedroom Type 1B.C

Unit 03  
Level 40-55

**VIDA**  
RESIDENCES  
DUBAI MALL



Tower 1

	sq.m	sq.ft.
Suite Area	62.66	674.47
Balcony Area	7.15	76.96
Total Area	69.81	751.43



**FLOOR PLANS** 1. All dimensions are in imperial and metric, and measured to structural elements and exclude wall finishes and construction tolerances. 2. All materials, dimensions, and drawings are approximate only. 3. Information is subject to change without notice, at developer's absolute discretion. 4. Actual area may vary from the stated area. 5. Drawings not to scale. 6. All images used are for illustrative purposes only and do not represent the actual size, features, specifications, fittings, and furnishings. 7. The developer reserves the right to make revisions/alterations at its absolute discretion, without any liability whatsoever.

# 1 Bedroom

## Type 1B.D

Unit 01, 02

Level 40-51

Level 52-55

# VIDA

RESIDENCES  
DUBAI MALL



Tower 1

Level 40-51	sq.m	sq.ft.
Suite Area	71.58	770.48
Balcony Area	11.17	120.23
<b>Total Area</b>	<b>82.75</b>	<b>890.71</b>
Level 52-55	sq.m	sq.ft.
Suite Area	73.43	790.39
Balcony Area	11.01	118.51
<b>Total Area</b>	<b>84.44</b>	<b>908.90</b>



**FLOOR PLANS** 1. All dimensions are in imperial and metric, and measured to structural elements and exclude wall finishes and construction tolerances. 2. All materials, dimensions, and drawings are approximate only. 3. Information is subject to change without notice, at developer's absolute discretion. 4. Actual area may vary from the stated area. 5. Drawings not to scale. 6. All images used are for illustrative purposes only and do not represent the actual size, features, specifications, fittings, and furnishings. 7. The developer reserves the right to make revisions/alterations at its absolute discretion, without any liability whatsoever.

# 1 Bedroom Type 1B.E

Unit 08  
Level 40-55

**VIDA**  
RESIDENCES  
DUBAI MALL



Tower 1

	sq.m	sq.ft.
Suite Area	60.97	656.28
Balcony Area	12.51	134.66
Total Area	73.48	790.94



**FLOOR PLANS** 1. All dimensions are in imperial and metric, and measured to structural elements and exclude wall finishes and construction tolerances. 2. All materials, dimensions, and drawings are approximate only. 3. Information is subject to change without notice, at developer's absolute discretion. 4. Actual area may vary from the stated area. 5. Drawings not to scale. 6. All images used are for illustrative purposes only and do not represent the actual size, features, specifications, fittings, and furnishings. 7. The developer reserves the right to make revisions/alterations at its absolute discretion, without any liability whatsoever.

# 1 Bedroom Type 1B.F

Unit 06, 07  
Level 40-55

**VIDA**  
RESIDENCES  
DUBAI MALL



Tower 1

	sq.m	sq.ft.
Suite Area	56.59	609.13
Balcony Area	6.43	69.21
<b>Total Area</b>	<b>63.02</b>	<b>678.34</b>

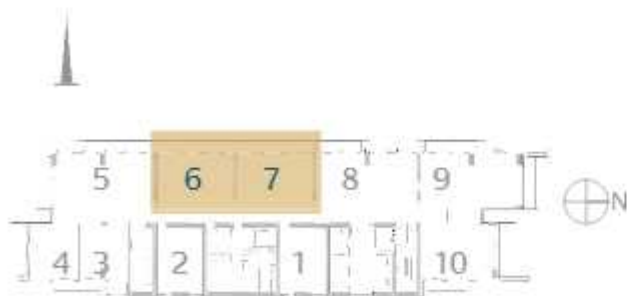


**FLOOR PLANS** 1. All dimensions are in imperial and metric, and measured to structural elements and exclude wall finishes and construction tolerances. 2. All materials, dimensions, and drawings are approximate only. 3. Information is subject to change without notice, at developer's absolute discretion. 4. Actual area may vary from the stated area. 5. Drawings not to scale. 6. All images used are for illustrative purposes only and do not represent the actual size, features, specifications, fittings, and furnishings. 7. The developer reserves the right to make revisions/alterations at its absolute discretion, without any liability whatsoever.

# 2 Bedroom TYPE 2B.A

Unit 06, 07  
Level 17-38

**VIDA**  
RESIDENCES  
DUBAI MALL



Tower 1

Unit 06	sq.m	sq.ft.
Suite Area	91.62	986.19
Balcony Area	20.90	224.97
<b>Total Area</b>	<b>112.52</b>	<b>1211.16</b>
Unit 07	sq.m	sq.ft.
Suite Area	91.57	985.65
Balcony Area	20.59	221.637
<b>Total Area</b>	<b>112.16</b>	<b>1207.28</b>



**FLOOR PLANS** 1. All dimensions are in imperial and metric, and measured to structural elements and exclude wall finishes and construction tolerances. 2. All materials, dimensions, and drawings are approximate only. 3. Information is subject to change without notice, at developer's absolute discretion. 4. Actual area may vary from the stated area. 5. Drawings not to scale. 6. All images used are for illustrative purposes only and do not represent the actual size, features, specifications, fittings, and furnishings. 7. The developer reserves the right to make revisions/alterations at its absolute discretion, without any liability whatsoever.

# 2 Bedroom TYPE 2B.B

Unit 05  
Level 17-38

**VIDA**  
RESIDENCES  
DUBAI MALL



Tower 1

	sq.m	sq.ft.
Suite Area	88.90	956.91
Balcony Area	18.54	199.56
<b>Total Area</b>	<b>107.44</b>	<b>1095.66</b>



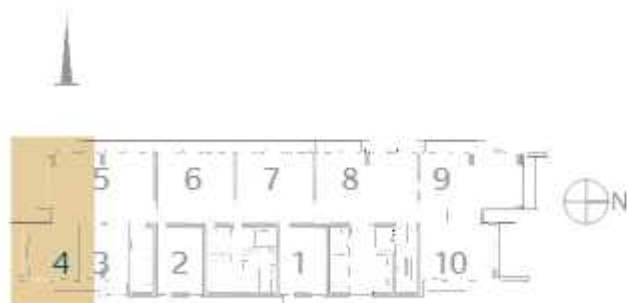
**FLOOR PLANS** 1. All dimensions are in imperial and metric, and measured to structural elements and exclude wall finishes and construction tolerances. 2. All materials, dimensions, and drawings are approximate only. 3. Information is subject to change without notice, at developer's absolute discretion. 4. Actual area may vary from the stated area. 5. Drawings not to scale. 6. All images used are for illustrative purposes only and do not represent the actual size, features, specifications, fittings, and furnishings. 7. The developer reserves the right to make revisions/alterations at its absolute discretion, without any liability whatsoever.



# 2 Bedroom Type 2B.C

Unit 04  
Level 17-38

**VIDA**  
RESIDENCES  
DUBAI MALL



Tower 1

	sq.m	sq.ft.
Suite Area	95.36	1026.45
Balcony Area	6.43	69.21
<b>Total Area</b>	<b>101.79</b>	<b>1095.66</b>

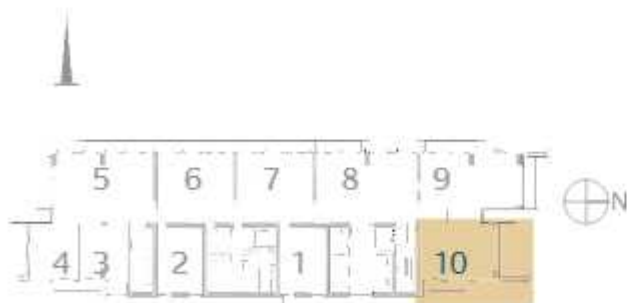


**FLOOR PLANS** 1. All dimensions are in imperial and metric, and measured to structural elements and exclude wall finishes and construction tolerances. 2. All materials, dimensions, and drawings are approximate only. 3. Information is subject to change without notice, at developer's absolute discretion. 4. Actual area may vary from the stated area. 5. Drawings not to scale. 6. All images used are for illustrative purposes only and do not represent the actual size, features, specifications, fittings, and furnishings. 7. The developer reserves the right to make revisions/alterations at its absolute discretion, without any liability whatsoever.

# 2 Bedroom TYPE 2B.D

**VIDA**  
RESIDENCES  
DUBAI MALL

Unit 10  
Level 17-38



Tower 1

	sq.m	sq.ft.
Suite Area	87.42	940.98
Balcony Area	11.87	127.77
<b>Total Area</b>	<b>99.29</b>	<b>1068.75</b>



**FLOOR PLANS** 1. All dimensions are in imperial and metric, and measured to structural elements and exclude wall finishes and construction tolerances. 2. All materials, dimensions, and drawings are approximate only. 3. Information is subject to change without notice, at developer's absolute discretion. 4. Actual area may vary from the stated area. 5. Drawings not to scale. 6. All images used are for illustrative purposes only and do not represent the actual size, features, specifications, fittings, and furnishings. 7. The developer reserves the right to make revisions/alterations at its absolute discretion, without any liability whatsoever.

# 2 Bedroom Type 2B.E

**VIDA**  
RESIDENCES  
DUBAI MALL

Unit 10  
Level 40-51  
Level 52-55



Tower 1

Level 40-51	sq.m	sq.ft.
Suite Area	98.04	1055.29
Balcony Area	12.03	129.49
<b>Total Area</b>	<b>110.07</b>	<b>1184.78</b>
Level 52-55	sq.m	sq.ft.
Suite Area	98.61	1061.43
Balcony Area	12.14	130.67
<b>Total Area</b>	<b>110.75</b>	<b>1192.10</b>



**FLOOR PLANS** 1. All dimensions are in imperial and metric, and measured to structural elements and exclude wall finishes and construction tolerances. 2. All materials, dimensions, and drawings are approximate only. 3. Information is subject to change without notice, at developer's absolute discretion. 4. Actual area may vary from the stated area. 5. Drawings not to scale. 6. All images used are for illustrative purposes only and do not represent the actual size, features, specifications, fittings, and furnishings. 7. The developer reserves the right to make revisions/alterations at its absolute discretion, without any liability whatsoever.

# 2 Bedroom Type 2B.F

Unit 06  
Level 40-55

**VIDA**  
RESIDENCES  
DUBAI MALL



Tower 1

	sq.m	sq.ft.
Suite Area	92.77	998.57
Balcony Area	20.89	227.86
<b>Total Area</b>	<b>113.66</b>	<b>1223.43</b>



**FLOOR PLANS** 1. All dimensions are in imperial and metric, and measured to structural elements and exclude wall finishes and construction tolerances. 2. All materials, dimensions, and drawings are approximate only. 3. Information is subject to change without notice, at developer's absolute discretion. 4. Actual area may vary from the stated area. 5. Drawings not to scale. 6. All images used are for illustrative purposes only and do not represent the actual size, features, specifications, fittings, and furnishings. 7. The developer reserves the right to make revisions/alterations at its absolute discretion, without any liability whatsoever.

# 2 Bedroom Type 2B.G

Unit 07  
Level 40-55

**VIDA**  
RESIDENCES  
DUBAI MALL



Tower 1

	sq.m	sq.ft.
Suite Area	91.90	989.20
Balcony Area	20.57	221.41
<b>Total Area</b>	<b>112.47</b>	<b>1210.61</b>

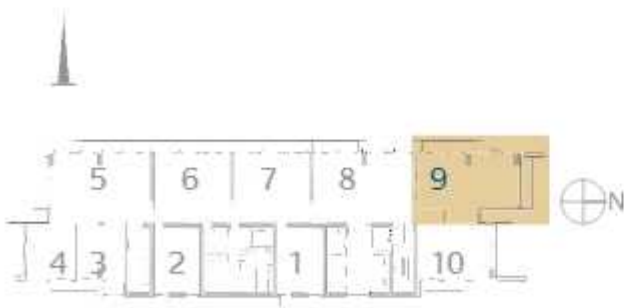


**FLOOR PLANS** 1. All dimensions are in imperial and metric, and measured to structural elements and exclude wall finishes and construction tolerances. 2. All materials, dimensions, and drawings are approximate only. 3. Information is subject to change without notice, at developer's absolute discretion. 4. Actual area may vary from the stated area. 5. Drawings not to scale. 6. All images used are for illustrative purposes only and do not represent the actual size, features, specifications, fittings, and furnishings. 7. The developer reserves the right to make revisions/alterations at its absolute discretion, without any liability whatsoever.

# 3 Bedroom Type 3B.A

Unit 09  
Level 17-38

**VIDA**  
RESIDENCES  
DUBAI MALL



Tower 1

	sq.m	sq.ft.
Suite Area	127.99	1377.67
Balcony Area	28.39	305.59
<b>Total Area</b>	<b>156.38</b>	<b>1683.26</b>



**FLOOR PLANS** 1. All dimensions are in imperial and metric, and measured to structural elements and exclude wall finishes and construction tolerances. 2. All materials, dimensions, and drawings are approximate only. 3. Information is subject to change without notice, at developer's absolute discretion. 4. Actual area may vary from the stated area. 5. Drawings not to scale. 6. All images used are for illustrative purposes only and do not represent the actual size, features, specifications, fittings, and furnishings. 7. The developer reserves the right to make revisions/alterations at its absolute discretion, without any liability whatsoever.

# 3 Bedroom Type 3B.B

Unit 08  
Level 17-38

**VIDA**  
RESIDENCES  
DUBAI MALL



Tower 1

	sq.m	sq.ft.
Suite Area	119.73	1288.76
Balcony Area	12.48	134.33
Total Area	132.21	1423.09



**FLOOR PLANS** 1. All dimensions are in imperial and metric, and measured to structural elements and exclude wall finishes and construction tolerances. 2. All materials, dimensions, and drawings are approximate only. 3. Information is subject to change without notice, at developer's absolute discretion. 4. Actual area may vary from the stated area. 5. Drawings not to scale. 6. All images used are for illustrative purposes only and do not represent the actual size, features, specifications, fittings, and furnishings. 7. The developer reserves the right to make revisions/alterations at its absolute discretion, without any liability whatsoever.

# 3 Bedroom Type 3B.C

Unit 05  
Level 40-51  
Level 52-55



Tower 1

Level 40-51	sq.m	sq.ft.
Suite Area	122.32	1316.64
Balcony Area	18.61	200.32
<b>Total Area</b>	<b>140.93</b>	<b>1516.96</b>
Level 52-55	sq.m	sq.ft.
Suite Area	121.83	1311.37
Balcony Area	18.61	200.32
<b>Total Area</b>	<b>140.44</b>	<b>1511.69</b>



**FLOOR PLANS** 1. All dimensions are in imperial and metric, and measured to structural elements and exclude wall finishes and construction tolerances. 2. All materials, dimensions, and drawings are approximate only. 3. Information is subject to change without notice, at developer's absolute discretion. 4. Actual area may vary from the stated area. 5. Drawings not to scale. 6. All images used are for illustrative purposes only and do not represent the actual size, features, specifications, fittings, and furnishings. 7. The developer reserves the right to make revisions/alterations at its absolute discretion, without any liability whatsoever.



# 4 Bedroom Type 4B.A

Unit 09  
Level 40-55

**VIDA**  
RESIDENCES  
DUBAI MALL



Tower 1

	sq.m	sq.ft.
Suite Area	180.93	1947.51
Balcony Area	28.02	301.60
<b>Total Area</b>	<b>208.95</b>	<b>2249.11</b>



**FLOOR PLANS** 1. All dimensions are in imperial and metric, and measured to structural elements and exclude wall finishes and construction tolerances. 2. All materials, dimensions, and drawings are approximate only. 3. Information is subject to change without notice, at developer's absolute discretion. 4. Actual area may vary from the stated area. 5. Drawings not to scale. 6. All images used are for illustrative purposes only and do not represent the actual size, features, specifications, fittings, and furnishings. 7. The developer reserves the right to make revisions/alterations at its absolute discretion, without any liability whatsoever.