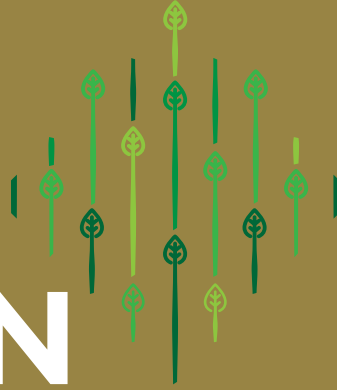


# LIVING GARDEN



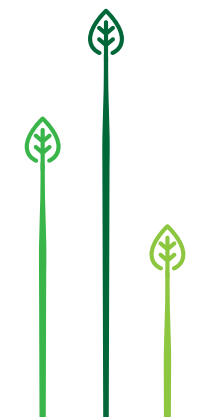
NOT JUST A HOME, A LIFESTYLE  
CREATED BY **LOOTAH** 



# WELCOME TO LIVING GARDEN BUILT BY LOOTAH

Living Garden is a development by Lootah. Located in JVC, the building takes pride of place in this community, a modern façade makes a confident statement, promising residents not just a home, but a lifestyle.

The development contains studios and 1-bedroom apartments, and a host of state-of-the-art amenities.

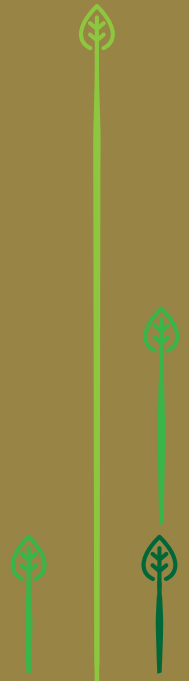




## AN EXPERT DEVELOPER

Since its inception, Lootah has acted as the pioneering real estate development arm of Lootah Holding. Lootah embodies a culture of excellence and an unswerving commitment to provide the very highest standards of living.

Lootah has not only achieved, but exceeded, their most ambitious goals. Already over 1,000 units have been delivered to satisfied occupants on time.



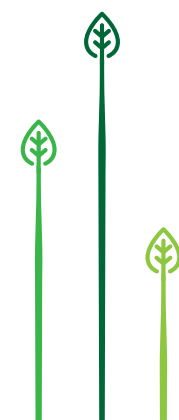


## A THRIVING COMMUNITY

JVC is an up and coming neighbourhood in Dubai, where residents can live within reach of the city but also enjoy the benefits of a suburban lifestyle.

Launched in 2005, JVC offers an extensive range of amenities, including a community centre, mosque, parks, and easy access to Sheikh Zayed Road, DIP, Jebel Ali and the Expo 2020 site.

Within this thriving community sits the Living Garden development by Lootah, with a design that combines a modern style with a natural touch.





## A HOME TO BEGIN YOUR LIFE

Every Lootah development is designed to inspire creativity and enhance your life.

Here residents can live in an apartment designed to suit a modern lifestyle, with expert finishing.

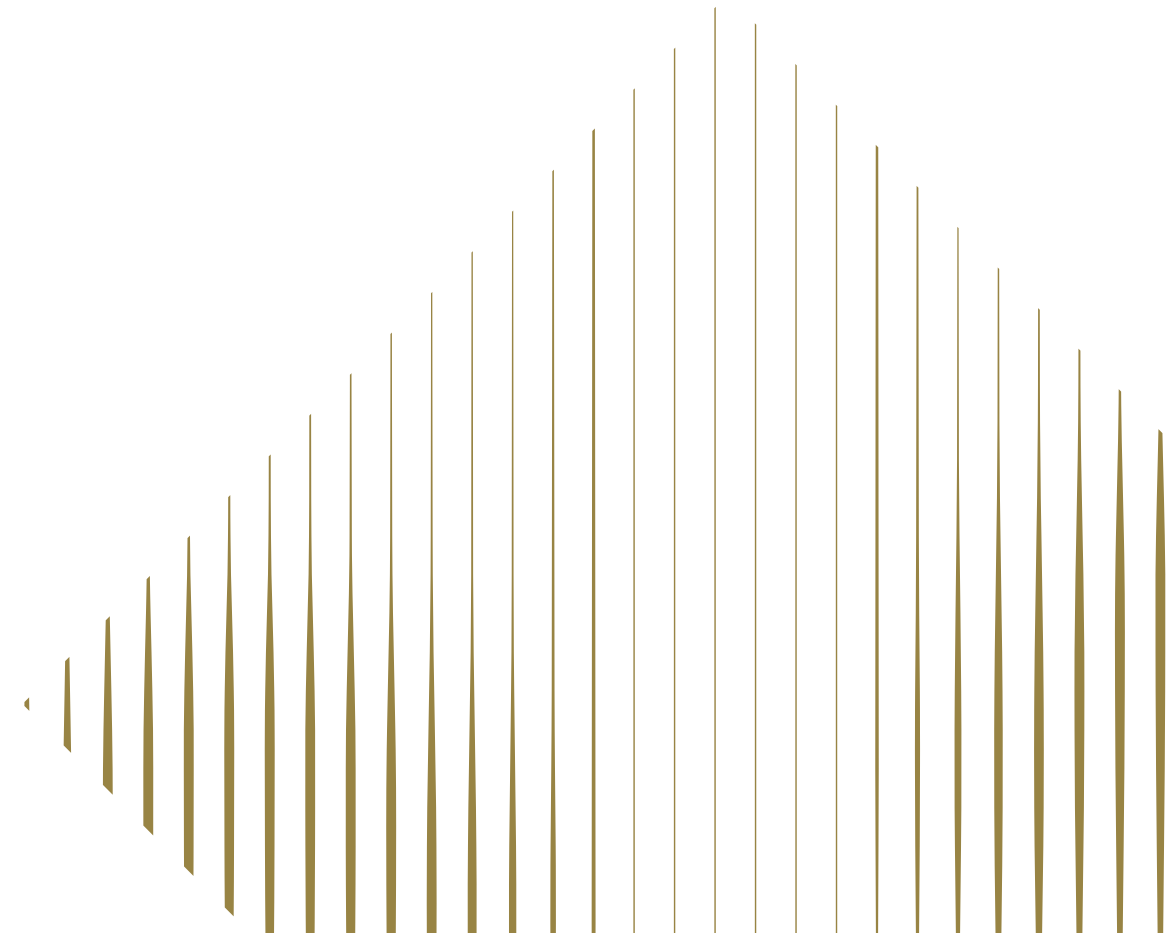
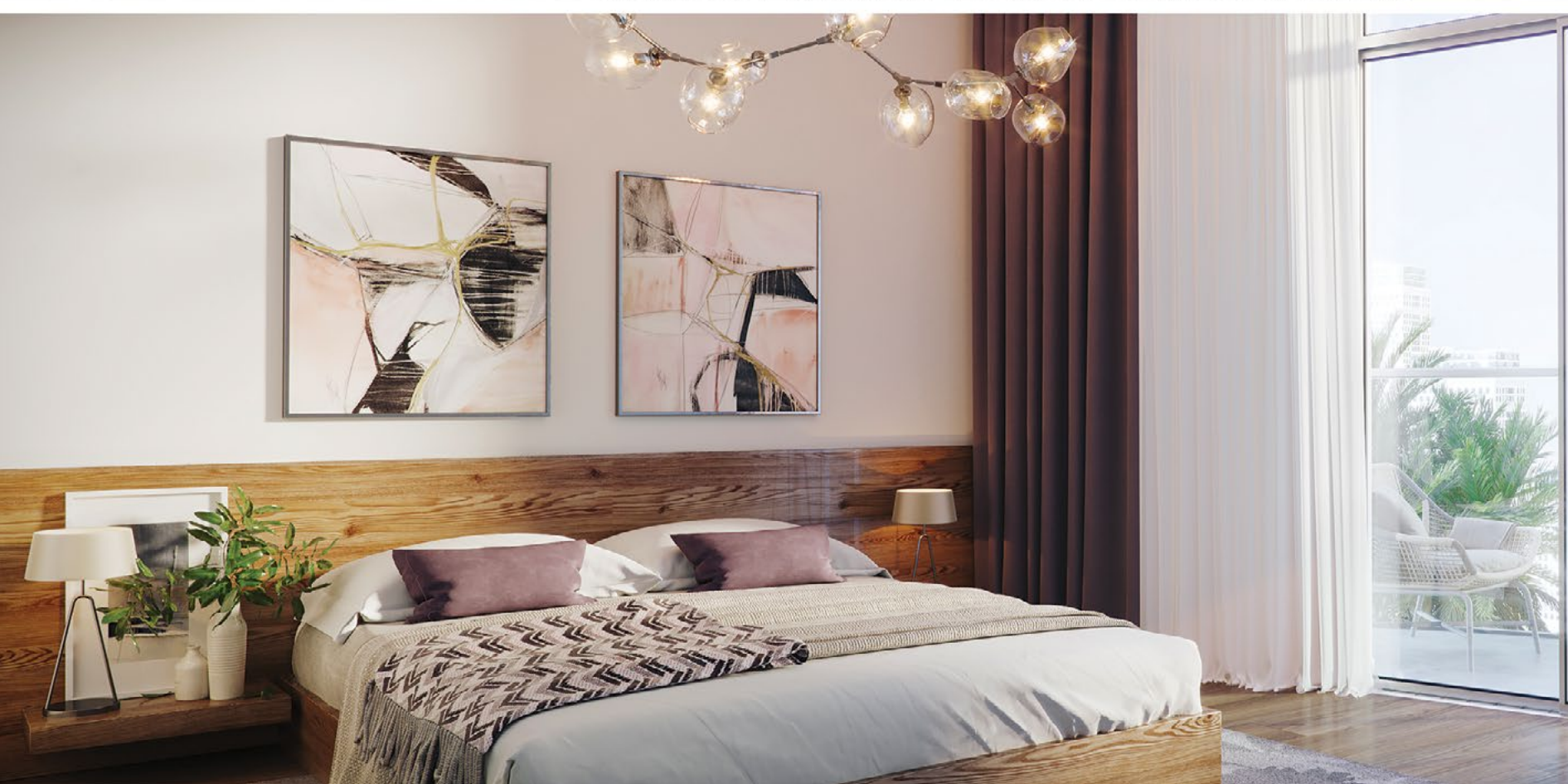




## A CREATIVE OPPORTUNITY

Luxury apartments with bespoke and high-quality finishing

- An external façade with aluminum vertical elements and glass windows.
- Interiors are finished with porcelain tiles and counter tops.
- Bathrooms are fitted with high-quality bathtubs, and have a spacious and luxurious feel.
- The lighting, apartment palette, and ceiling finishing keep in mind the tastes of our residents.

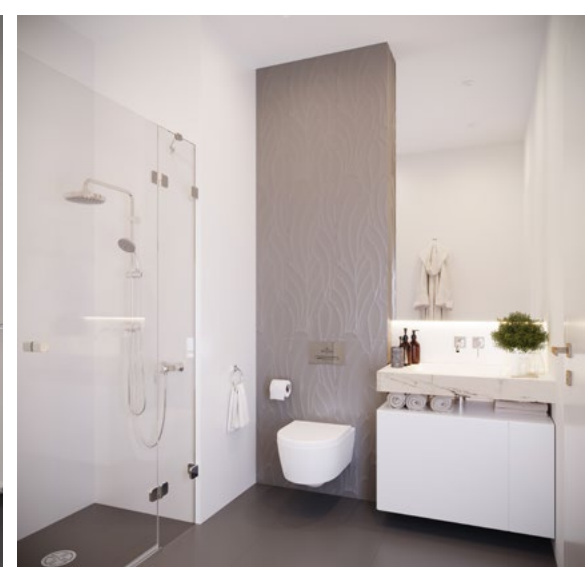




## A HOST OF AMENITIES

### Facilities

- State-of-the-art gym
- Covered parking
- Kitchens
- Apartments come with fitted wardrobes
- High quality fixtures and fittings
- Roof landscaping and water features

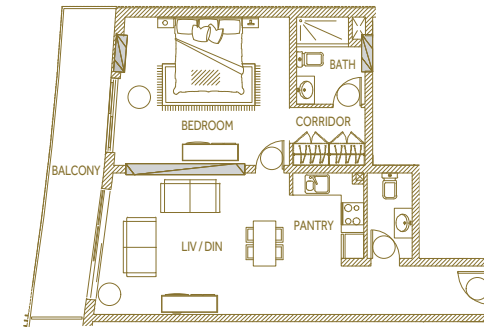


# LEVEL 1-3 FLOOR PLAN

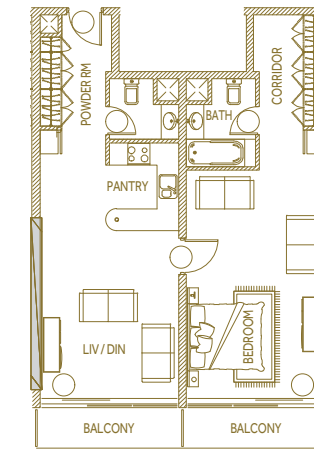


1 BEDROOM
  STUDIO
  BALCONY

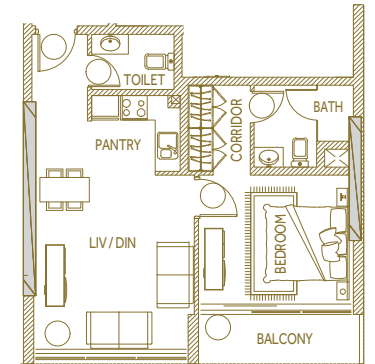
**ONE BEDROOM - TYPE 1**  
L - 02, L - 10



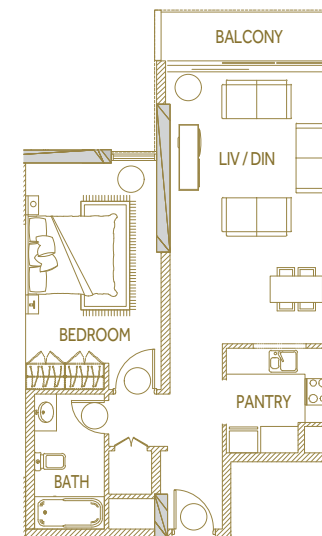
**ONE BEDROOM - TYPE 2**  
L - 15, L - 23



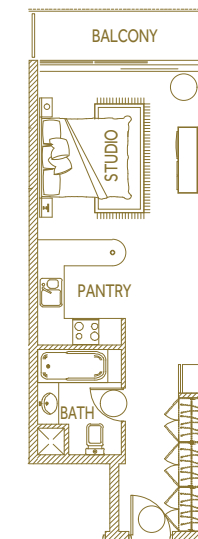
**ONE BEDROOM - TYPE 3**  
L - 18, L - 21



**ONE BEDROOM - TYPE 4**  
L - 25

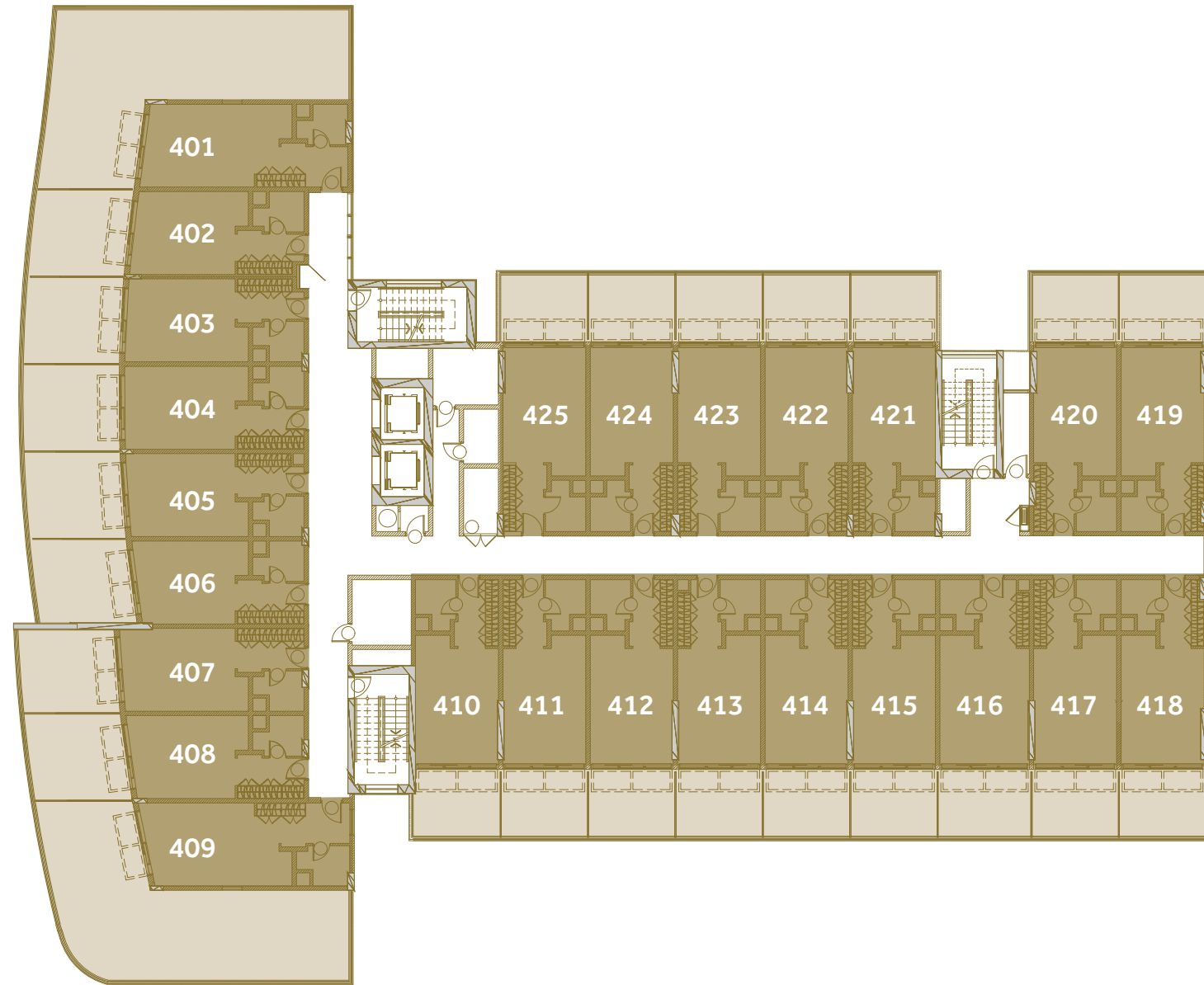


**STUDIO**

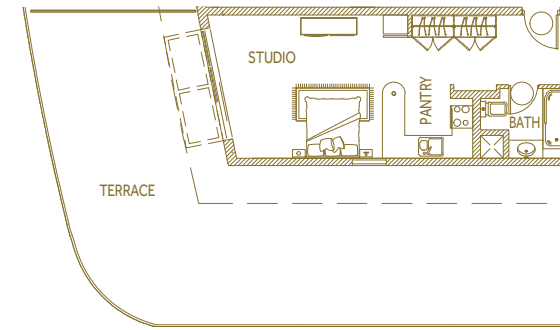




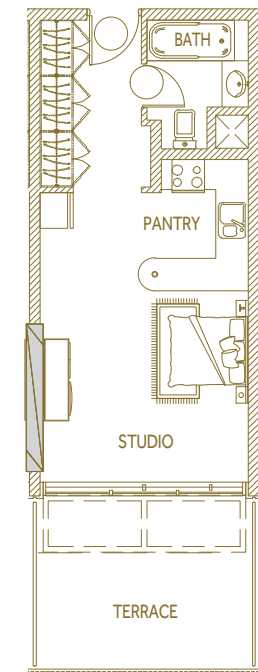
# LEVEL 4 FLOOR PLAN



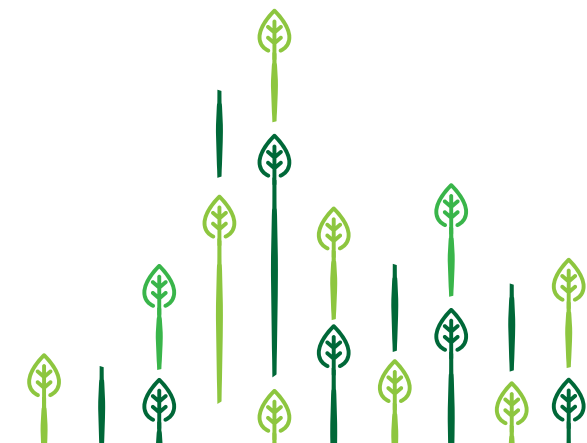
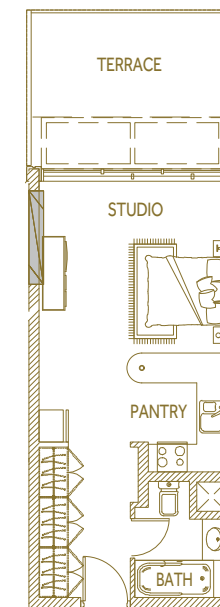
### STUDIO - TYPE 1



### STUDIO - TYPE 2



### STUDIO - TYPE 3

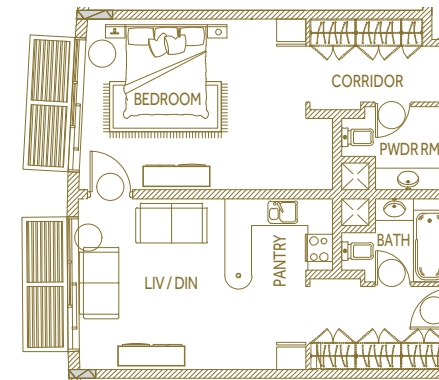


# LEVEL 5 FLOOR PLAN

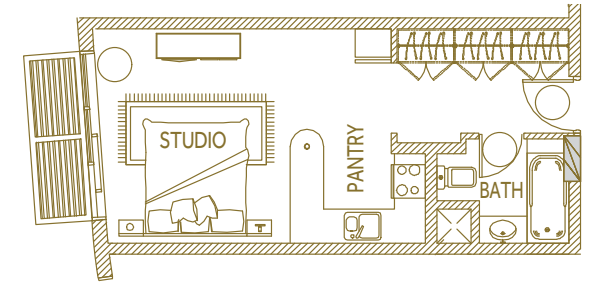


1 BEDROOM
  STUDIO

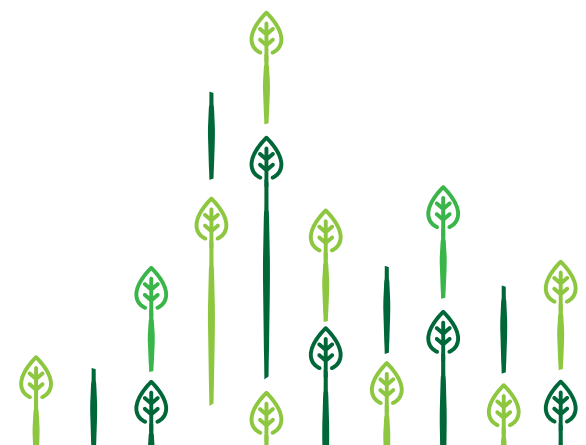
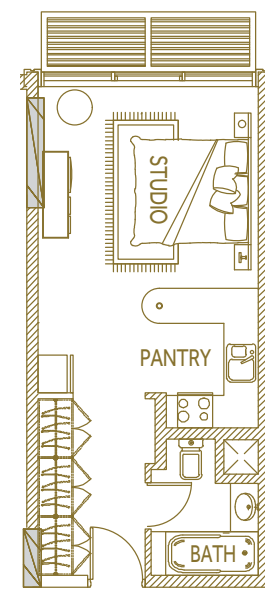
**ONE BEDROOM  
503, 504**



**STUDIO - TYPE 1**



**STUDIO - TYPE 2**





**Easy access to all directions:**

- 10 min to Expo
- 10 min to Al Maktoum International Airport
- 10 min to Jebel Ali
- 15 min to Dubai Downtown
- 15 min to Dubai International Airport

Scan to check out the Living Garden location.



## BOOK NOW

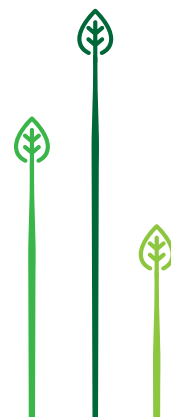
To find out more about Living Garden you can meet us at our sales center office or one of our Sales Consultants can visit you at any time to discuss investment requirements.

**Completion and handover are scheduled for Q3 2020.**

For more information please visit us at Bay Avenue, Block **B**, Mezzanine Floor, Office **F62**, Business Bay, Dubai, United Arab Emirates

Or call **0551036975**

**Scan to check out how close we are to you.**



**LOOTAH** 

800 LRED (5733)

LOOTAHDEV.COM

