

GREEN



CENTRAL
PARK
CITY WALK

VIRIDIAN & CELADON



AN EXCLUSIVE ADDRESS

Located in City Walk one of the most vibrant location in Dubai, between Jumeirah street and Sheikh Zayed road. The Central Park aims to establish one of the most unique living communities in the city of Dubai.

CONNECTIVITY

Connected by a well-established road network, and located between Al Wasl Road and Sheikh Zayed Road, Central Park at City Walk is ideally placed for quick and convenient access to major landmarks in Dubai.

01

MINUTE FROM
CITY WALK MALL

05

MINUTES FROM
COCA-COLA ARENA

10

MINUTES TO
JUMEIRAH BEACH

15

MINUTES TO
BURJ AL ARAB

15

MINUTES TO
DUBAI INT. AIRPORT

15

MINUTES TO
LA MER BEACH

20

MINUTES TO
THE PALM JUMEIRAH

20

MINUTES TO
DUBAI MARINA

50

MINUTES TO
AL MAKTUUM AIRPORT





The Central Park residential development is an inspired solution for a green and healthy lifestyle community within the heart of Dubai.

12

Residential buildings

80

80 Meters wide park

20

20 community amenities

48,000

48,000 square meters of green



PARK FACILITIES



Water features



Central pool area



Outdoor sport facilities



Children playgrounds and activities



Jogging tracks



Outdoor gym facilities



Main event spaces



BBQ and picnic areas

CENTRAL
PARK
CITY WALK

MAIN FACILITIES



Main event areas



Park water features



Park activities and play areas



Park outdoor sport activities



PROJECT LOCATION
WITHIN THE CENTRAL PARK



VIRIDIAN

CELADON

AT CENTRAL PARK
THE LIFE STYLE





View from the park



Balcony view overlooking the park



Main building entrance and drop-off area



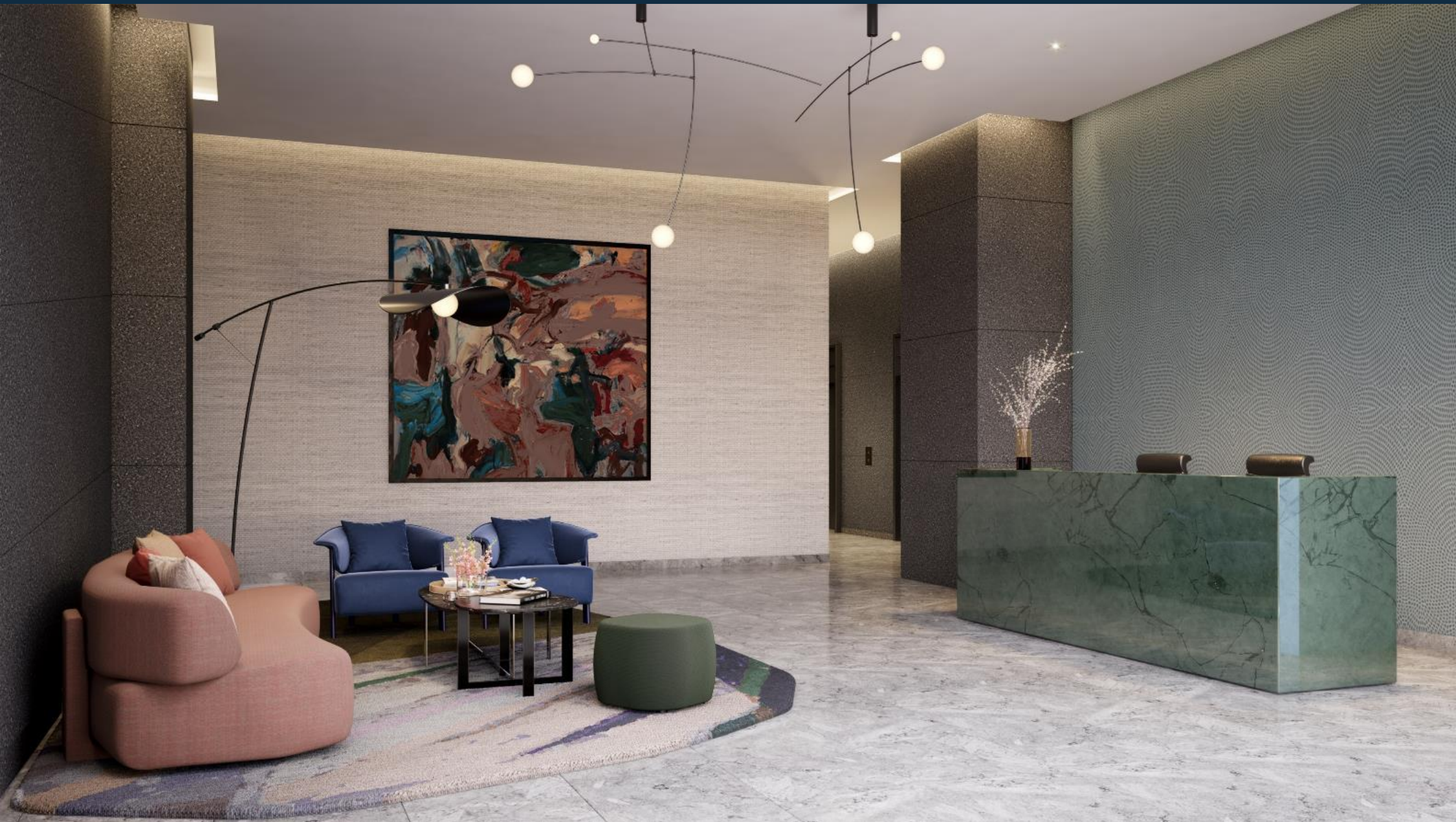
View overlooking the park activities



View showing the pool area



AT CENTRAL PARK
THE ELEGANT INTERIORS



Main entrance lobby



Building GYM



Living / Dining area



Kitchen and Dining space



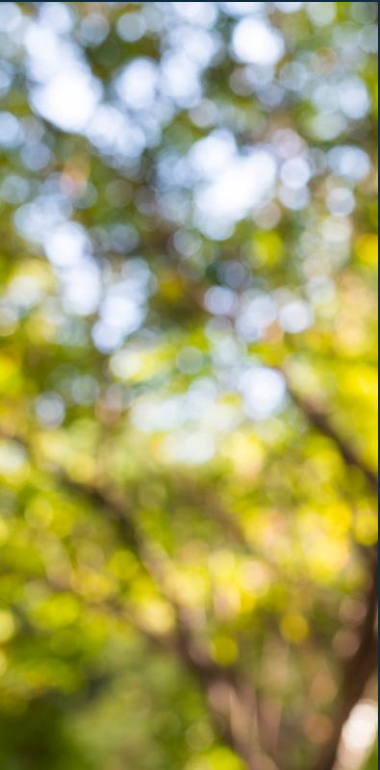
Master bedroom space



Master bathroom



Secondary Bathroom



AT CENTRAL PARK
THE LIFE STYLE



View from the park



Balcony view overlooking the park



Main building entrance and drop-off area



View showing the pool area

AT CENTRAL PARK
THE ELEGANT INTERIORS





Main entrance lobby



Building GYM



Living / Dining area



Kitchen and Dining space



Master bedroom space



Master bathroom



Secondary Bathroom

CENTRAL PARK

CITY WALK

CONTACT

EPHRAIM JOSEPH - +971 526237776

