

LIVE IN
**DUBAI
SOUTH**
RESIDENTIAL
DISTRICT

THE PULSE VILLAS

A development by

دبي الجنوب
**DUBAI
SOUTH**



THE PULSE VILLAS

A development by  DUBAI SOUTH



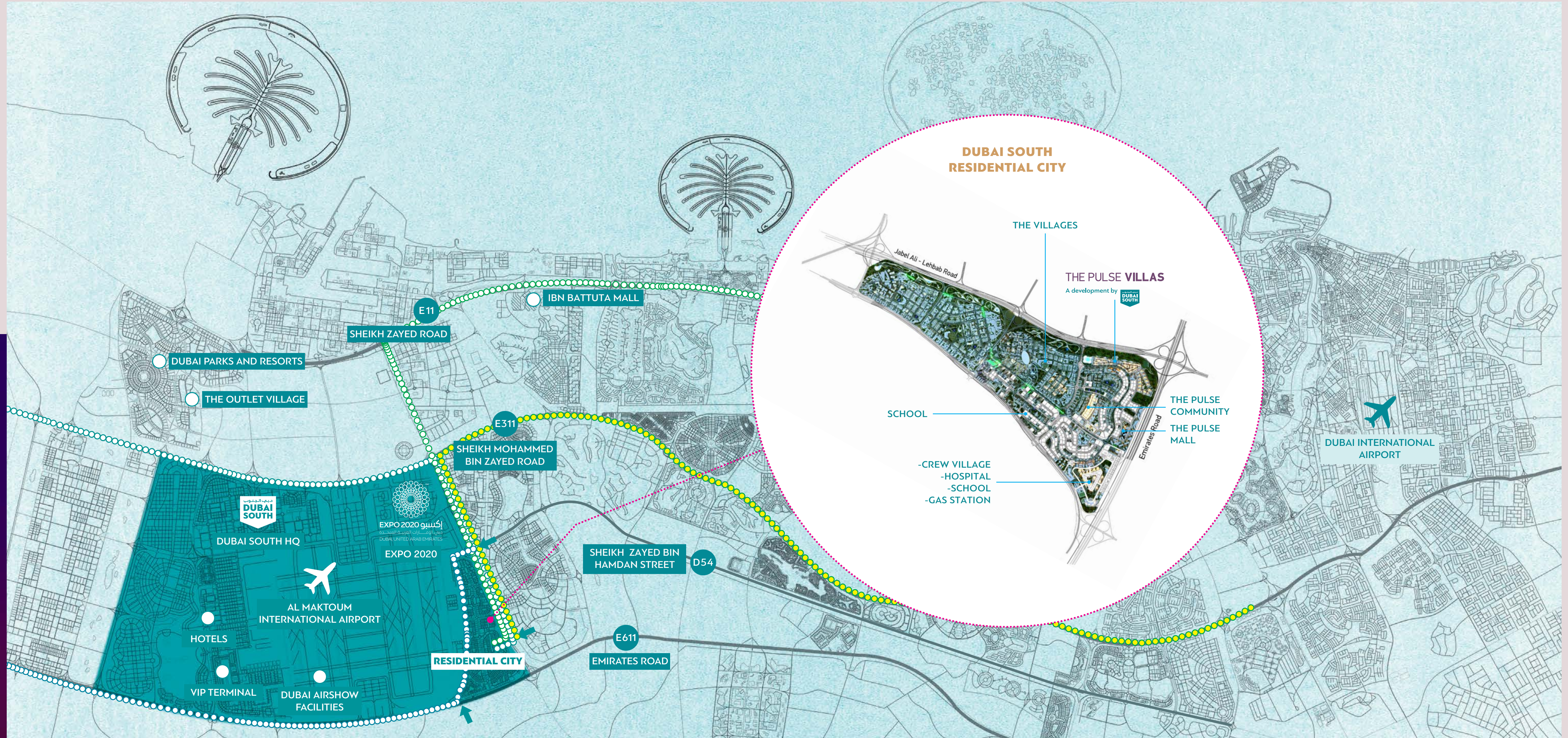
INTRODUCING THE PULSE VILLAS

Live in Dubai South's newest and most desirable neighbourhood, The Pulse Villas.

This is a master planned community, where you can experience the Villa & Townhouse lifestyle in a youthful and dynamic environment. Perfect for families, The Pulse Villas embraces and promotes a healthy and active way of life. Surrounded by greenery with access to a range of state-of-the-art private facilities, this is the ideal place to make your home.



LOCATION MAP



THE PULSE VILLAS

A development by

دبي الجنوب
DUBAI SOUTH





THE PULSE VILLAS

A development by  **DUBAI SOUTH**

STARTING FROM AED 850,000 2BR TOWNHOUSE

50%
DURING
CONSTRUCTION

50%
2 YEARS
POST-COMPLETION

2%
DLD FEES

5%
DOWN
PAYMENT

HANDOVER
2024

THE PULSE VILLAS

A development by  DUBAI SOUTH



SPACIOUS 2, 3 & 4 BEDROOM VILLAS

The Pulse Villas have been designed with families in mind. Every home comes with a private garden, maid's room, closed kitchen, storage room & 2 shaded parking spaces, and all bedrooms have en-suite bathrooms.

Starting from 1,890 sq.ft – 2,720 sq.ft

THE PULSE VILLAS

A development by



THE PULSE VILLAS

A development by  **DUBAI SOUTH**



THE PULSE VILLAS

A development by  **DUBAI SOUTH**



A COMPLETE INFRASTRUCTURE

The Pulse Villas is a dynamic community, that promotes a healthy lifestyle. Beautifully landscaped, you can enjoy exercising around the jogging & cycling tracks, at the private fitness center, Sports Zone, and swimming pools. There are ample activities for kids, with playgrounds and parks. Plus, a Mosque and retail Center with F&B.

Everything you could possible need to really feel at home.

THE PULSE VILLAS

A development by



THE PULSE VILLAS

A development by  DUBAI SOUTH



LIVE NEXT TO EXPO 2020

Enjoy complete convenience with:

- Direct access to EXPO Road
- 5 minute drive to DWC Airport and EXPO 2020





THE PULSE VILLAS

A development by



EXPO ROAD



- 2BR TOWNHOUSES
- 3BR TOWNHOUSES
- 4BR TOWNHOUSES
- ENTRANCE

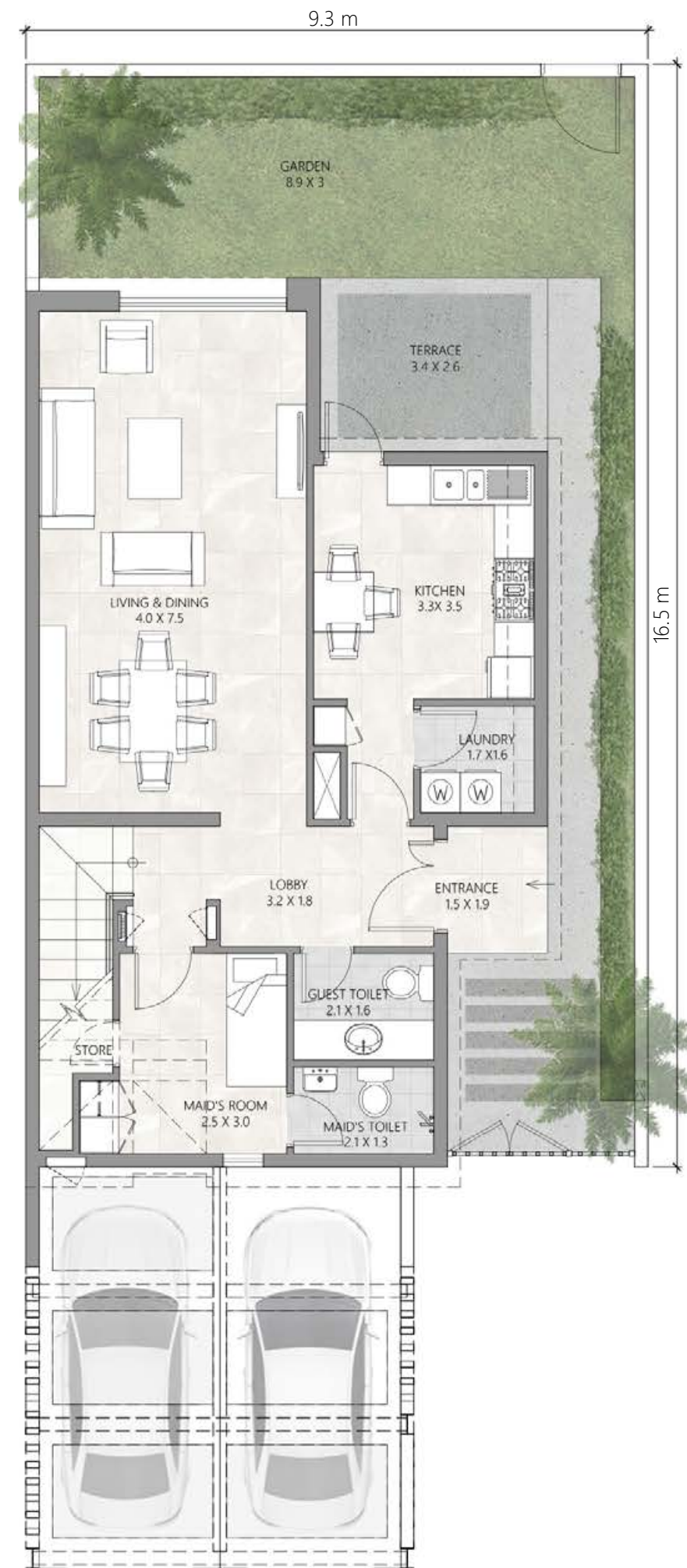
FLOOR PLAN

TWO BEDROOM

CORNER TYPE

BUA 1,894.8 SQ. FT.
GARDEN 688.7 SQ. FT.

GROUND LEVEL PLAN



FIRST LEVEL PLAN



THE PULSE VILLAS

A development by  DUBAI SOUTH

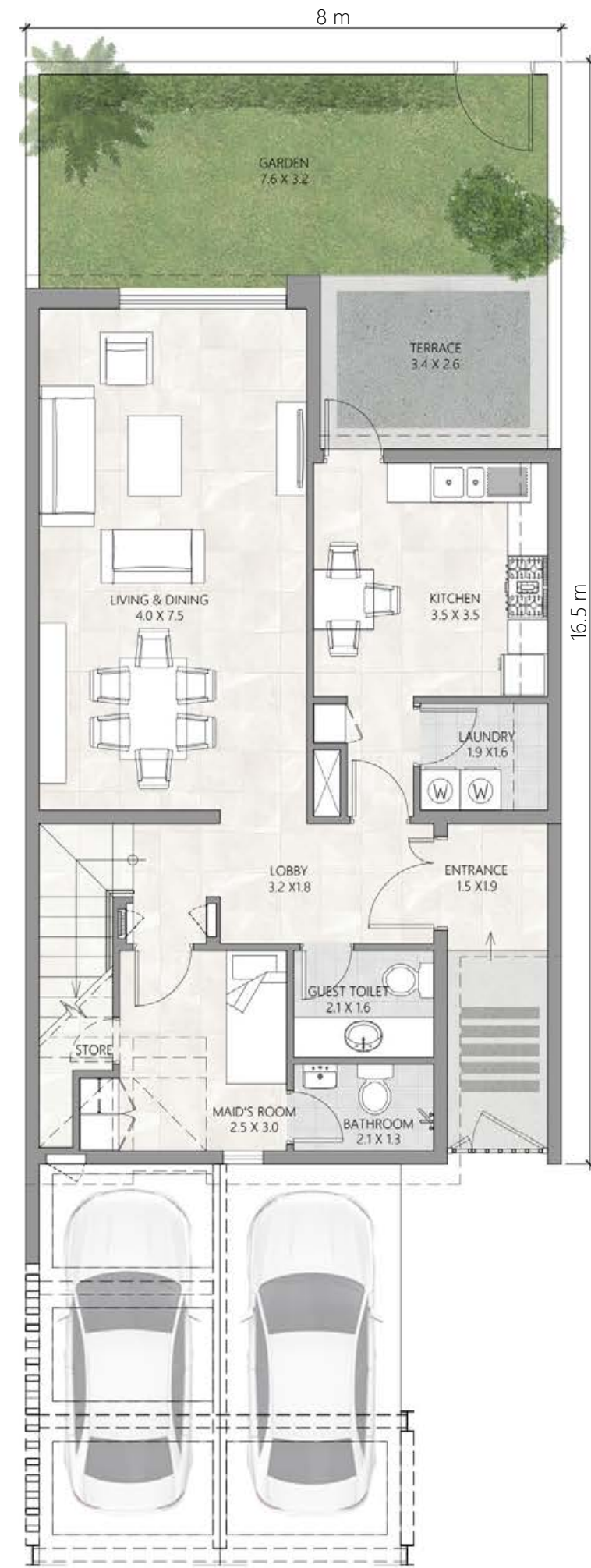
FLOOR PLAN

TWO BEDROOM

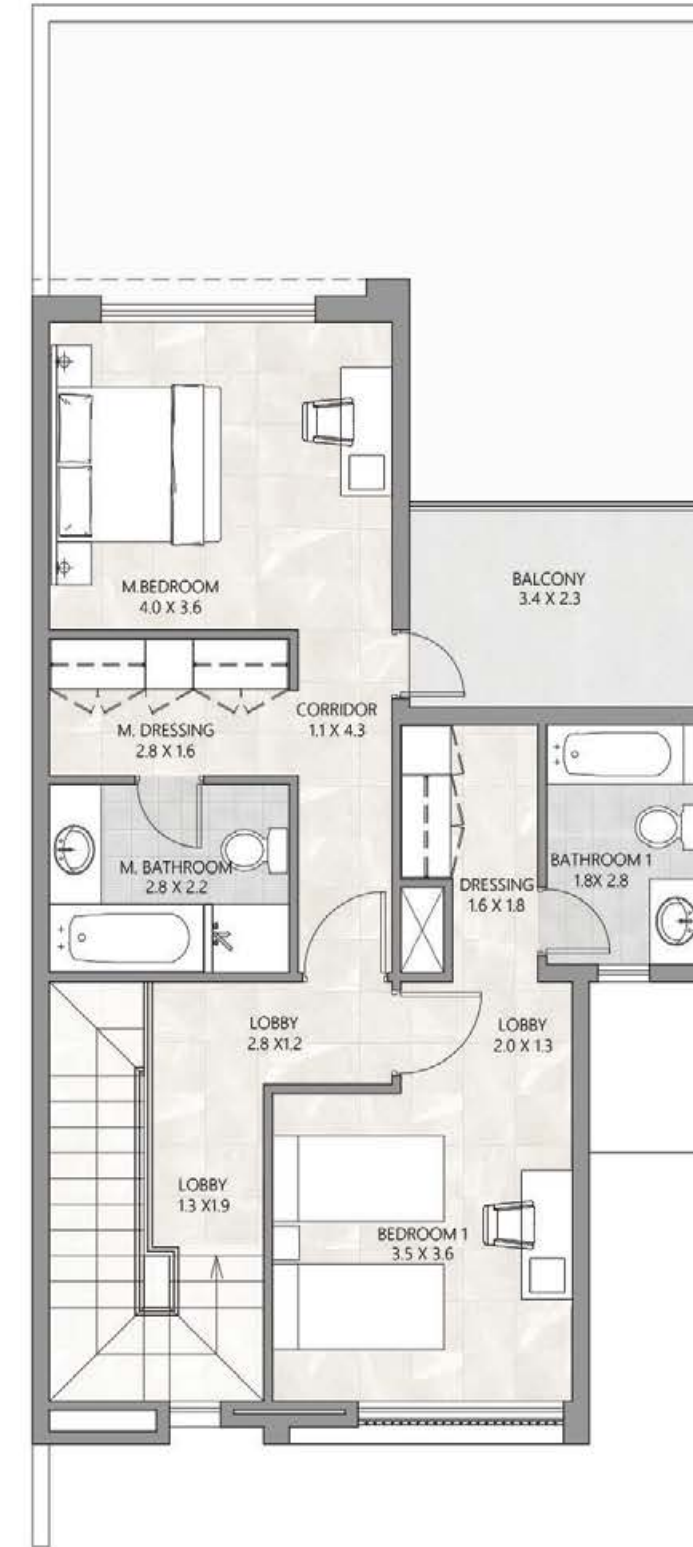
MIDDLE TYPE

BUA 1,900.6 SQ. FT.
GARDEN 533.8 SQ. FT.

GROUND LEVEL PLAN



FIRST LEVEL PLAN



THE PULSE VILLAS

A development by  DUBAI SOUTH

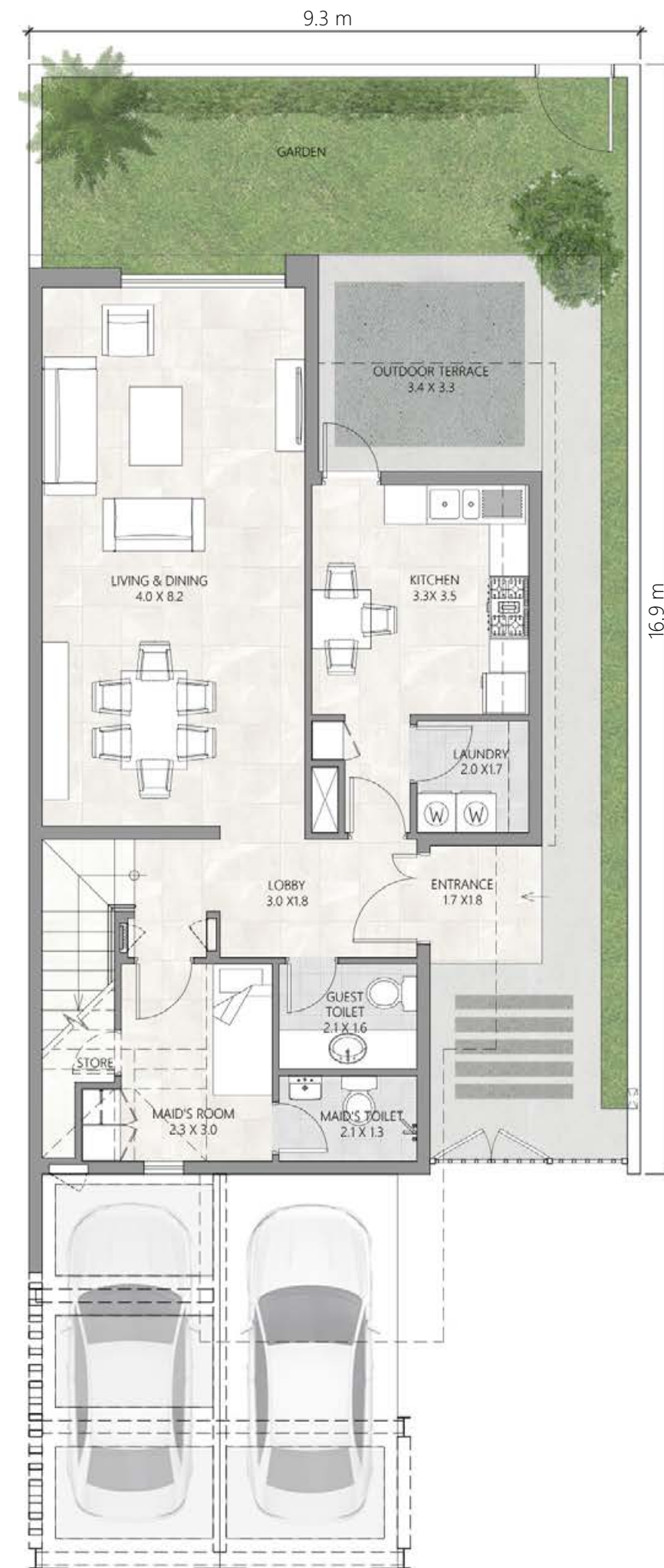
FLOOR PLAN

THREE BEDROOM-A

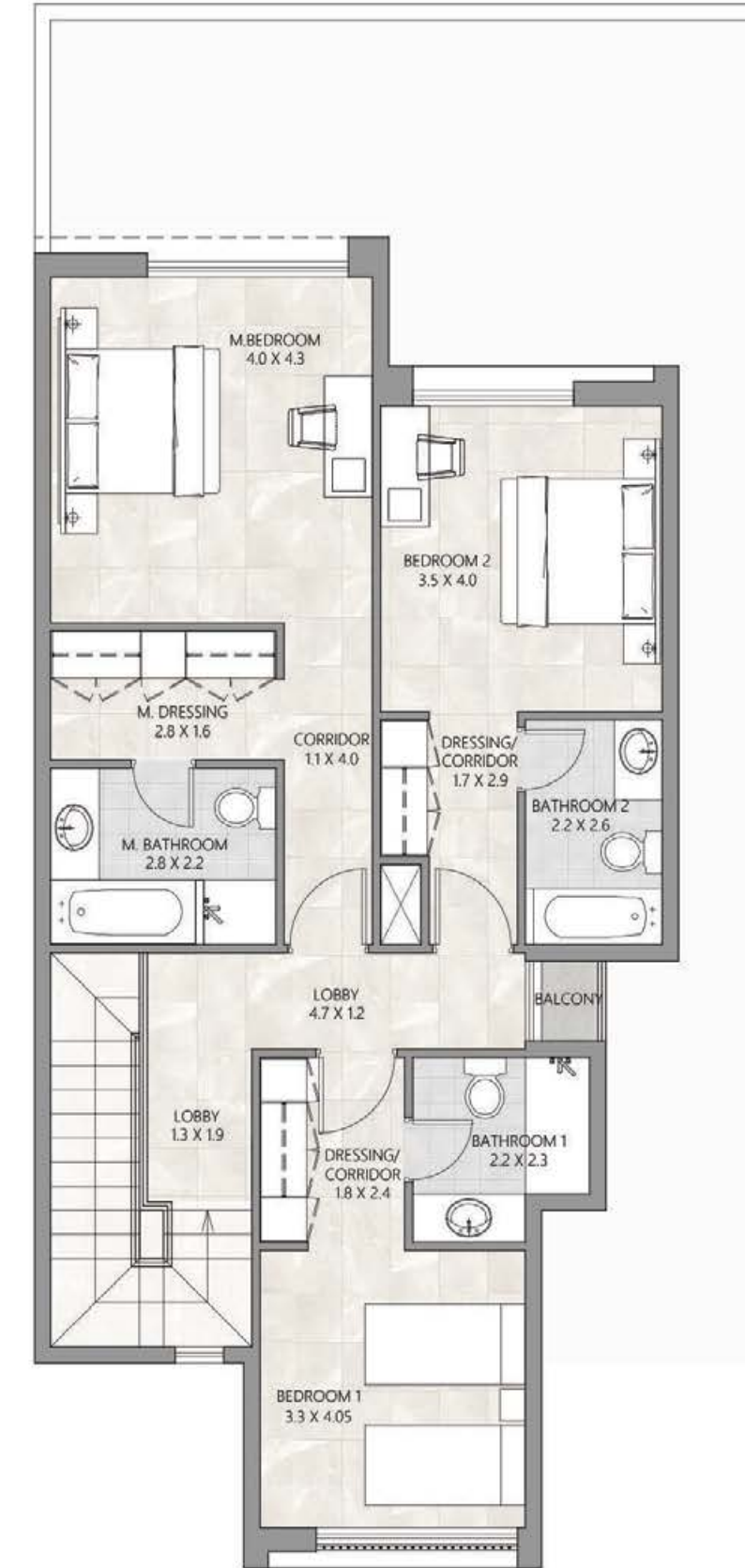
CORNER TYPE

BUA 2,117.6 SQ. FT.
GARDEN 678.4 SQ. FT.

GROUND LEVEL PLAN



FIRST LEVEL PLAN



THE PULSE VILLAS

A development by  DUBAI SOUTH

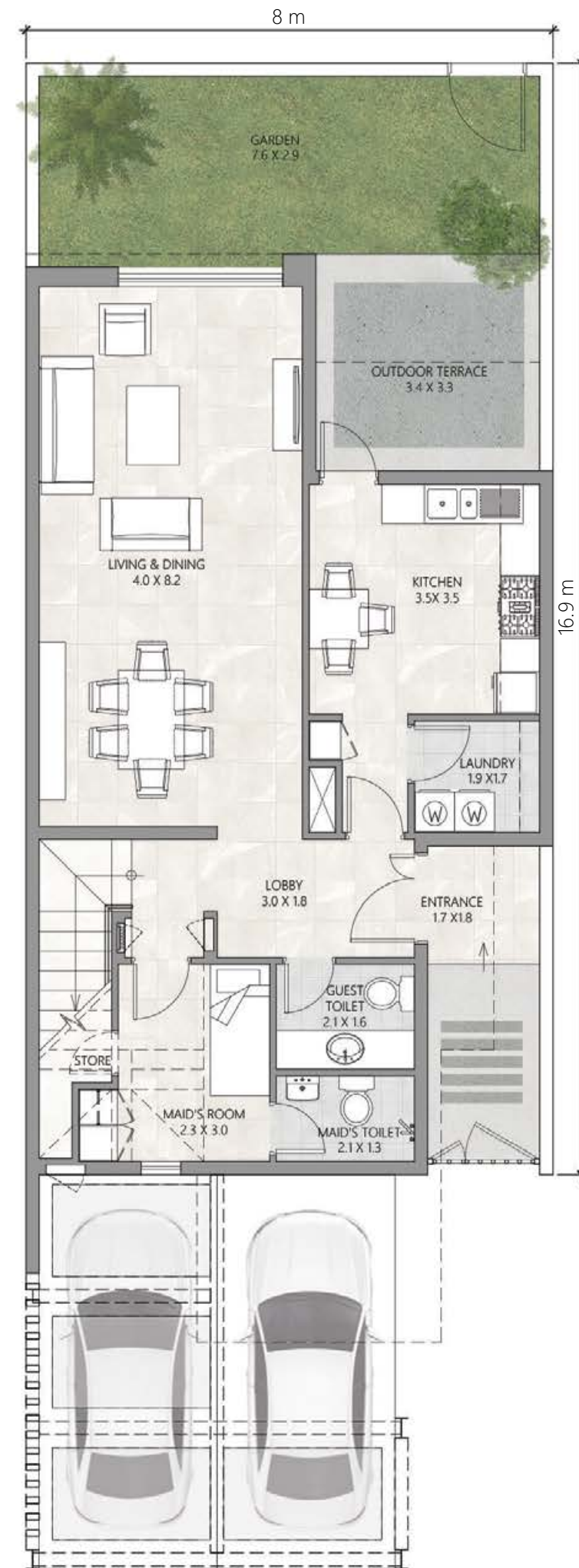
FLOOR PLAN

THREE BEDROOM-A

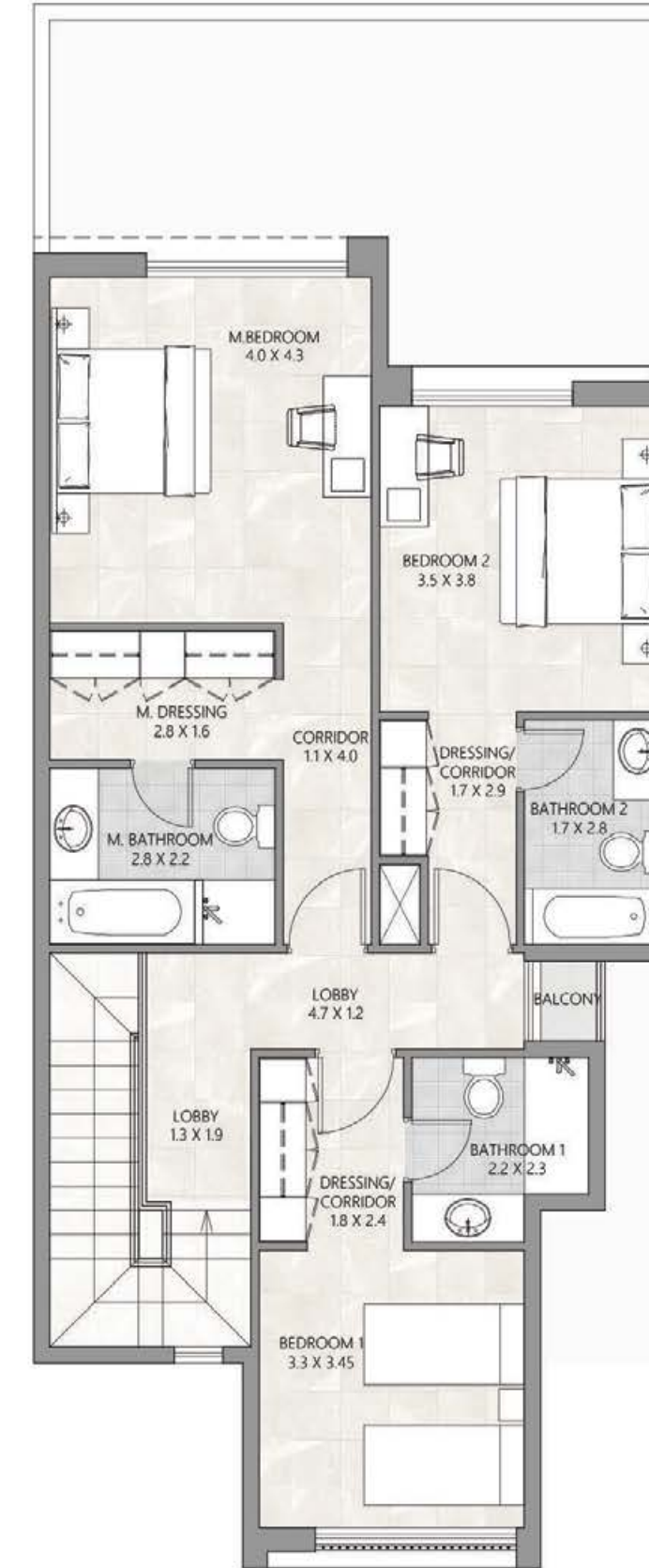
MIDDLE TYPE

BUA 2,123.6 SQ. FT.
GARDEN 460.2 SQ. FT.

GROUND LEVEL PLAN



FIRST LEVEL PLAN



THE PULSE VILLAS

A development by  DUBAI SOUTH

FLOOR PLAN

THREE BEDROOM-B

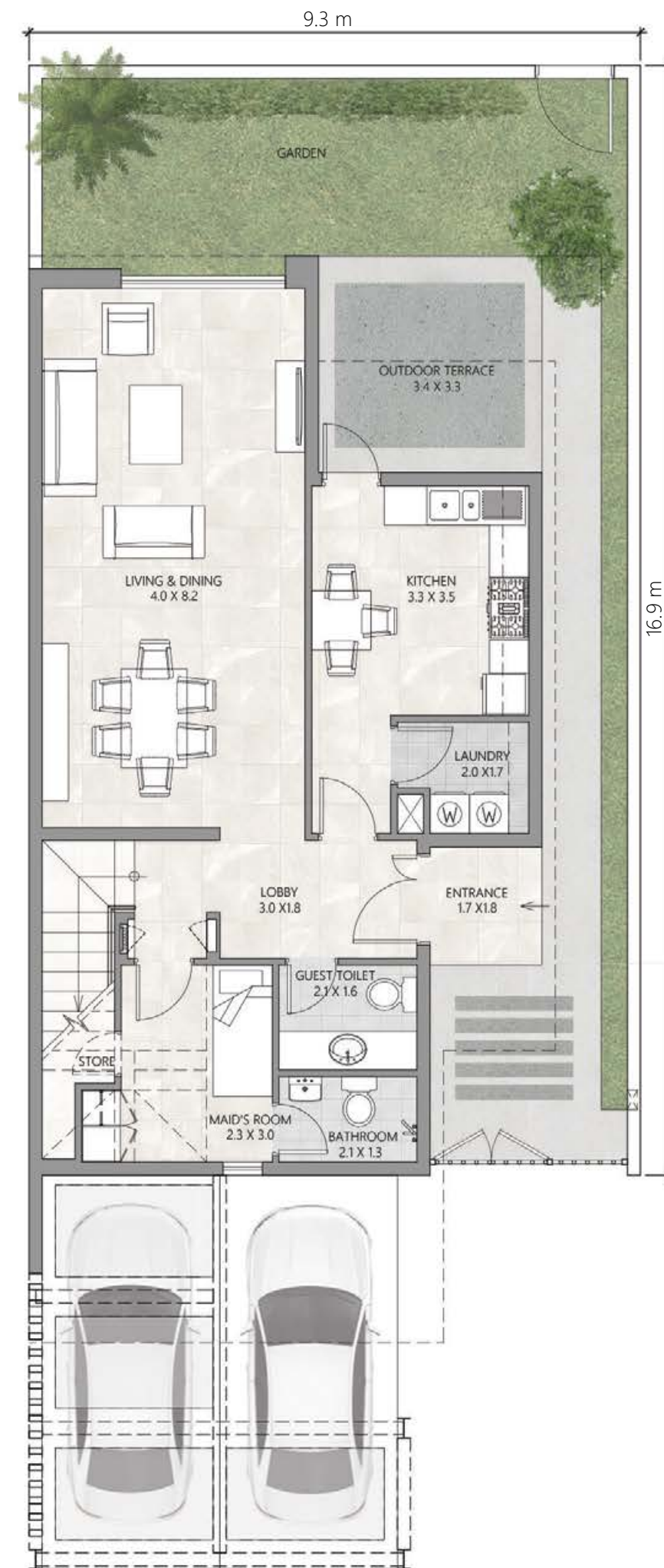
CORNER TYPE

BUA 2,218.9 SQ. FT.
GARDEN 763.7 SQ. FT.

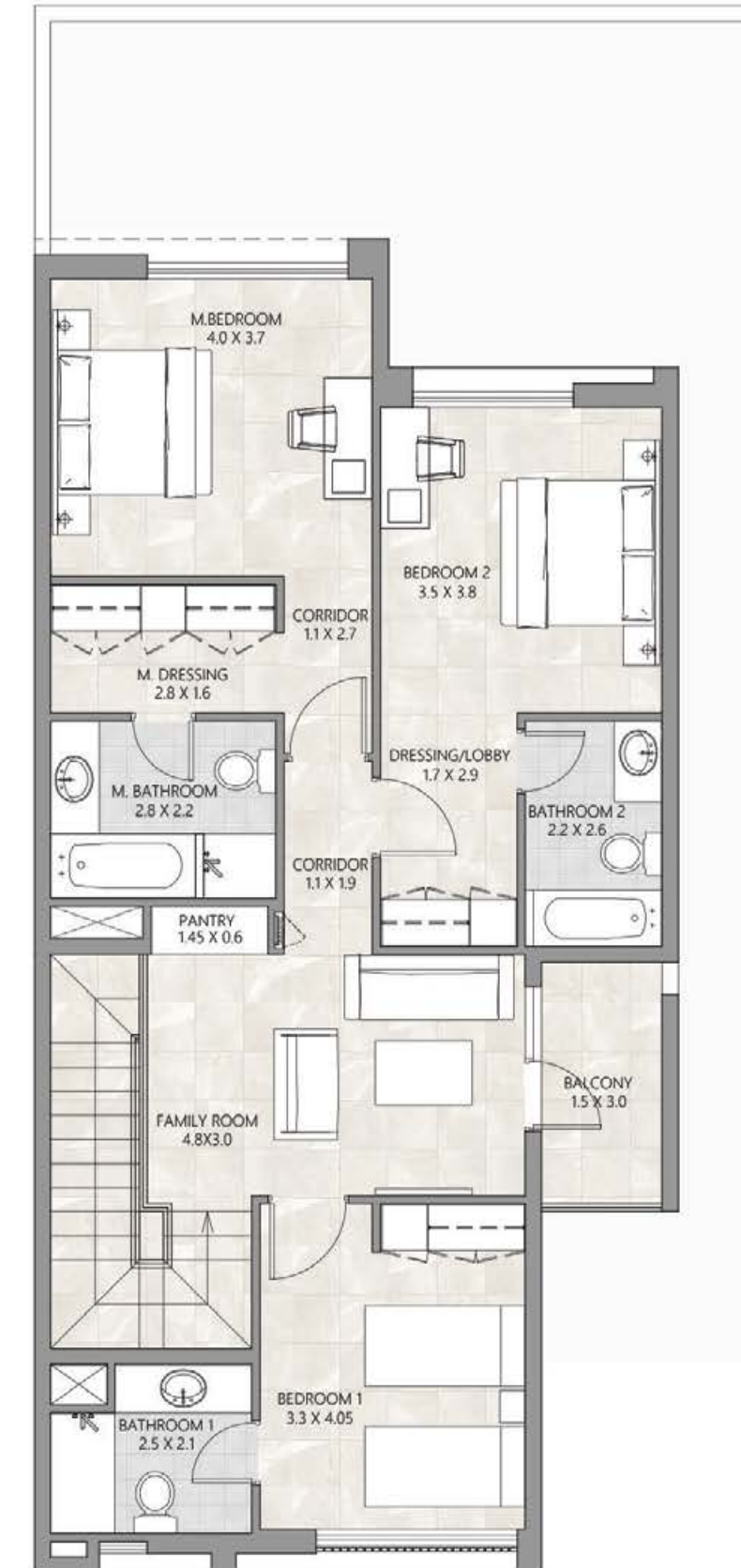
THE PULSE VILLAS

A development by  DUBAI SOUTH

GROUND LEVEL PLAN



FIRST LEVEL PLAN



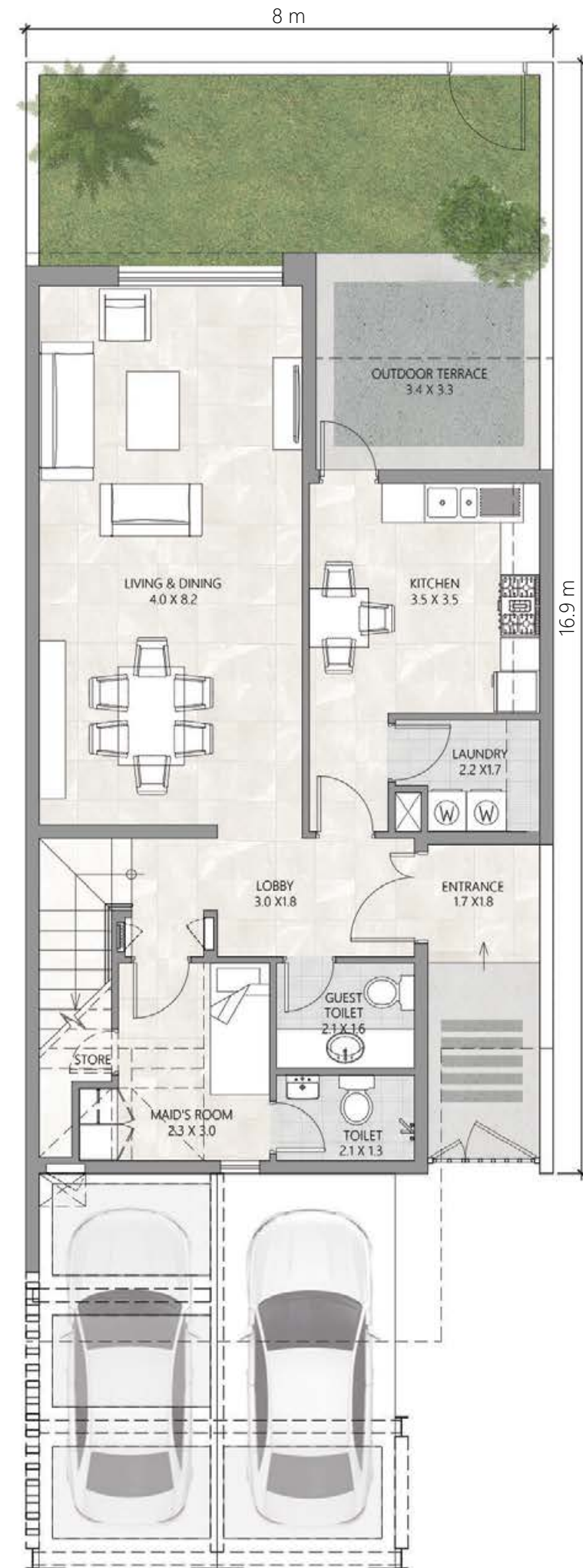
FLOOR PLAN

THREE BEDROOM-B

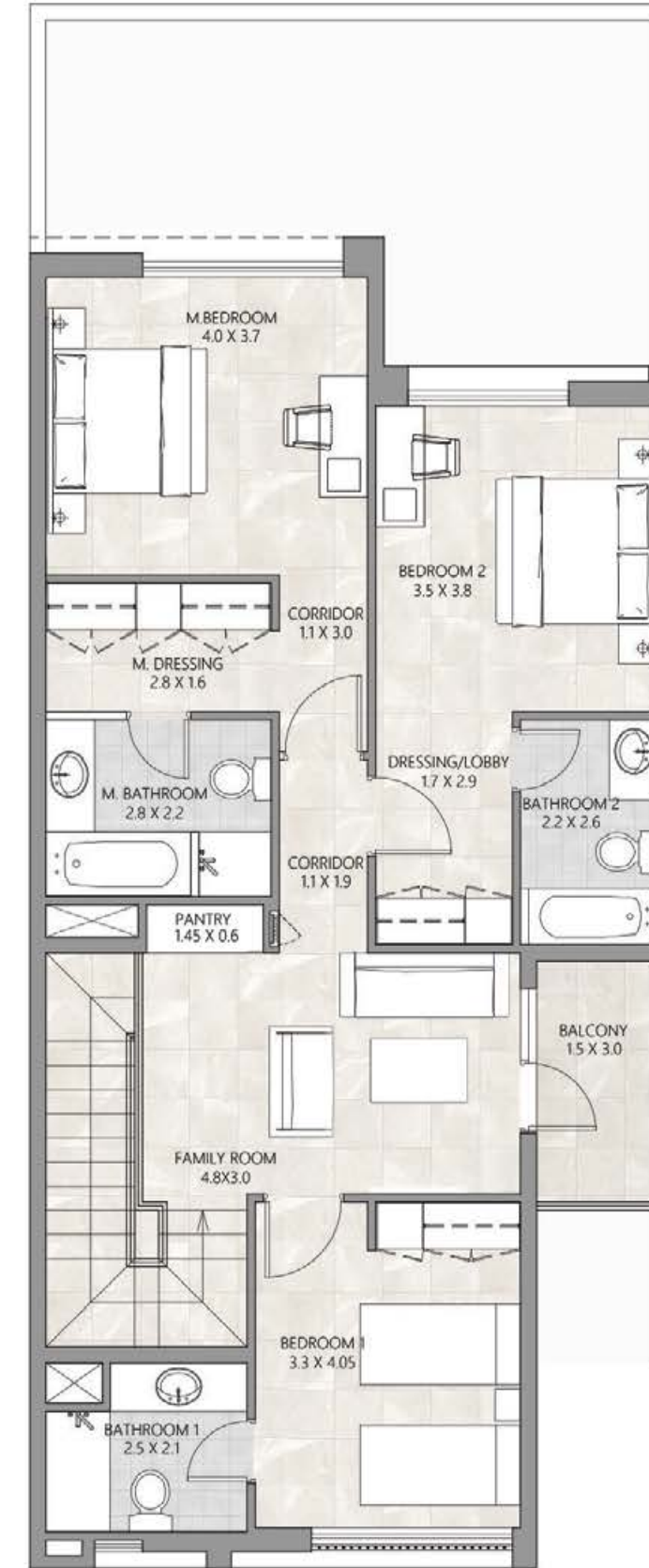
MIDDLE TYPE

BUA 2,225.1 SQ. FT.
GARDEN 533.8 SQ. FT.

GROUND LEVEL PLAN



FIRST LEVEL PLAN



THE PULSE VILLAS

A development by  DUBAI SOUTH

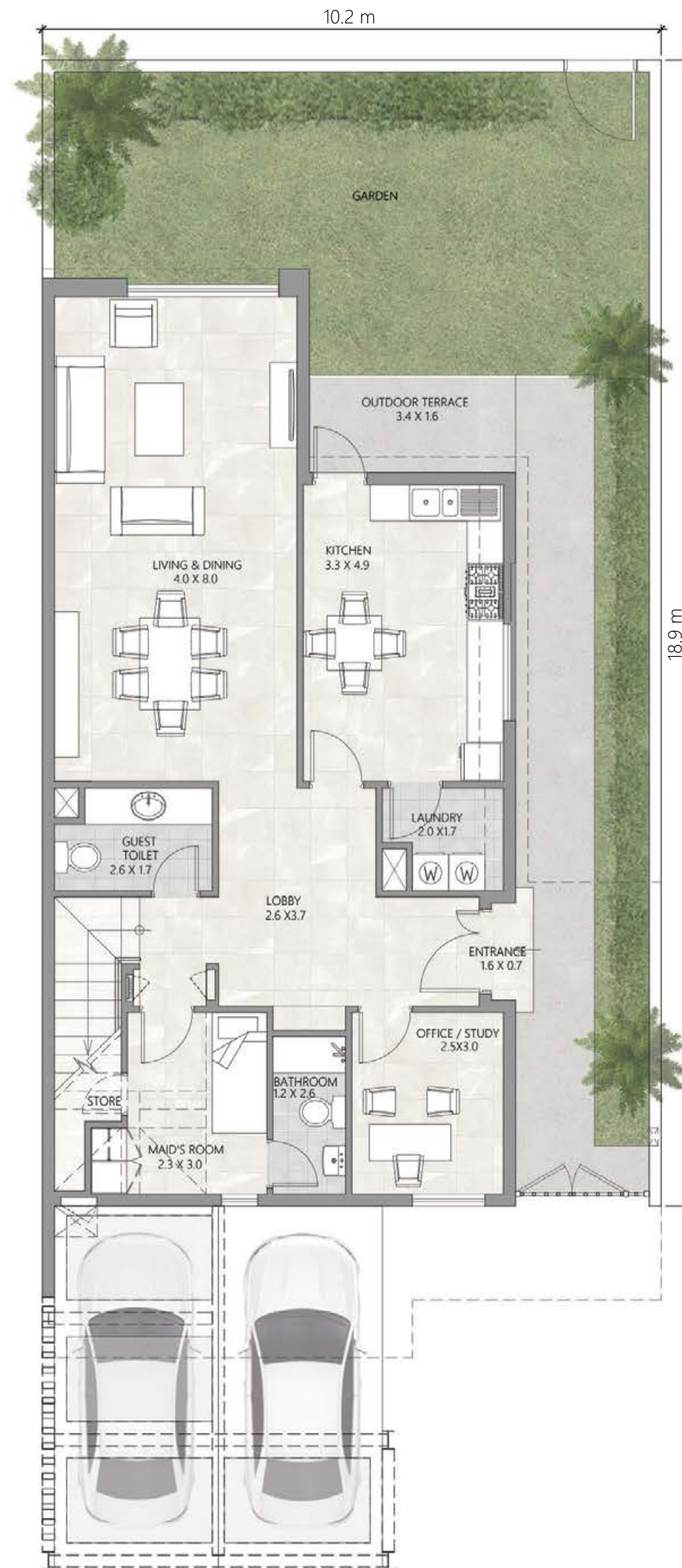
FLOOR PLAN

FOUR BEDROOM

SEMI DETACHED VILLA

BUA 2,719.3 SQ. FT.
GARDEN 1,176.2 SQ. FT.


GROUND LEVEL PLAN



FIRST LEVEL PLAN



THE PULSE VILLAS

A development by  DUBAI SOUTH

THE PULSE VILLAS

A development by  DUBAI SOUTH

BOOK NOW
800 SOUTH (76884)

