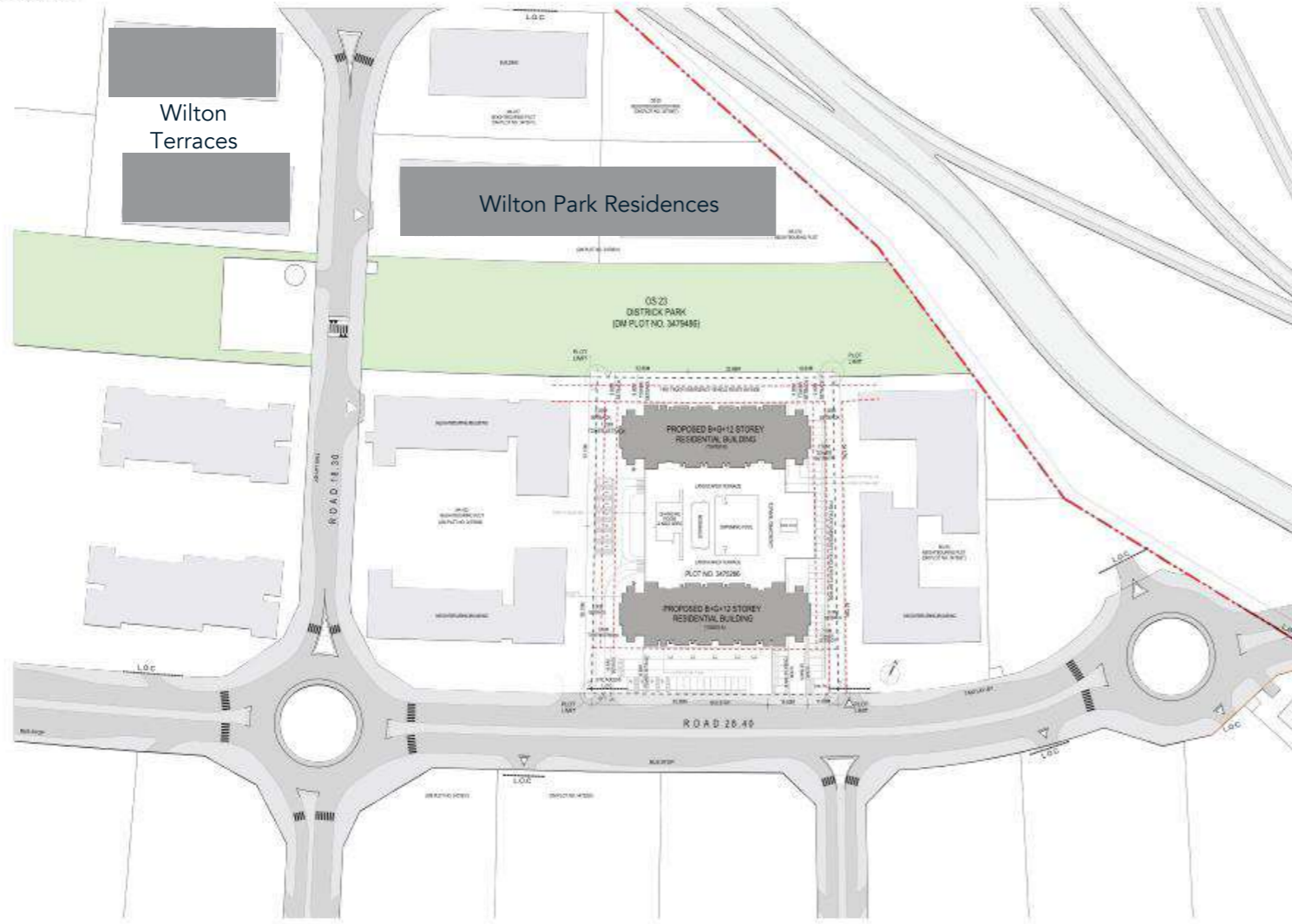




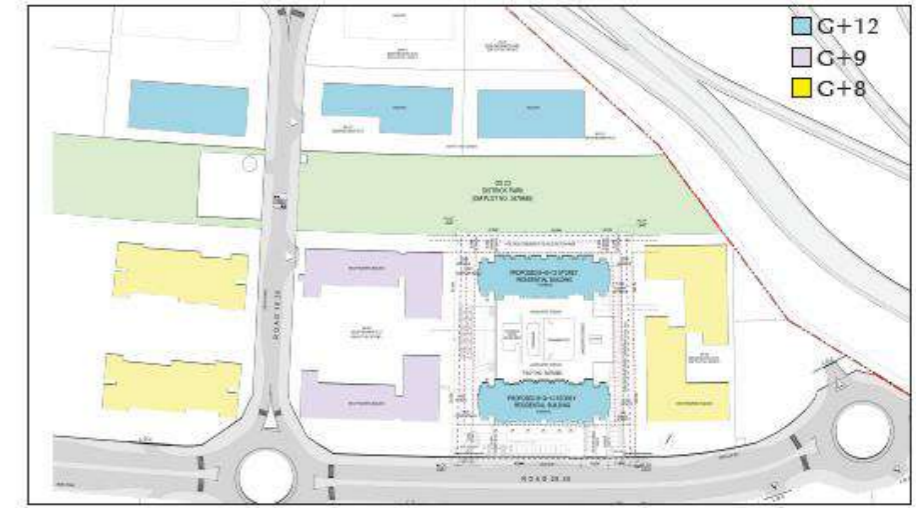
KENSINGTON WATERS
2021/05/31



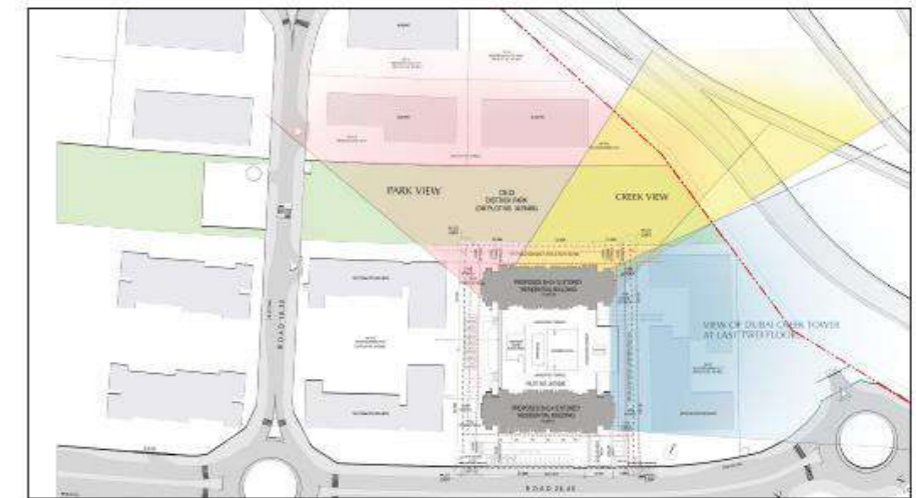
Site Access



Surrounding Building Heights

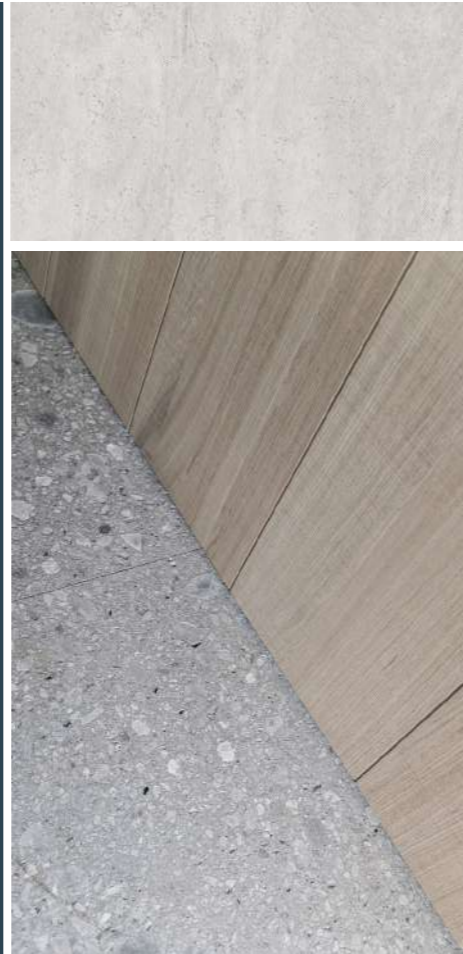


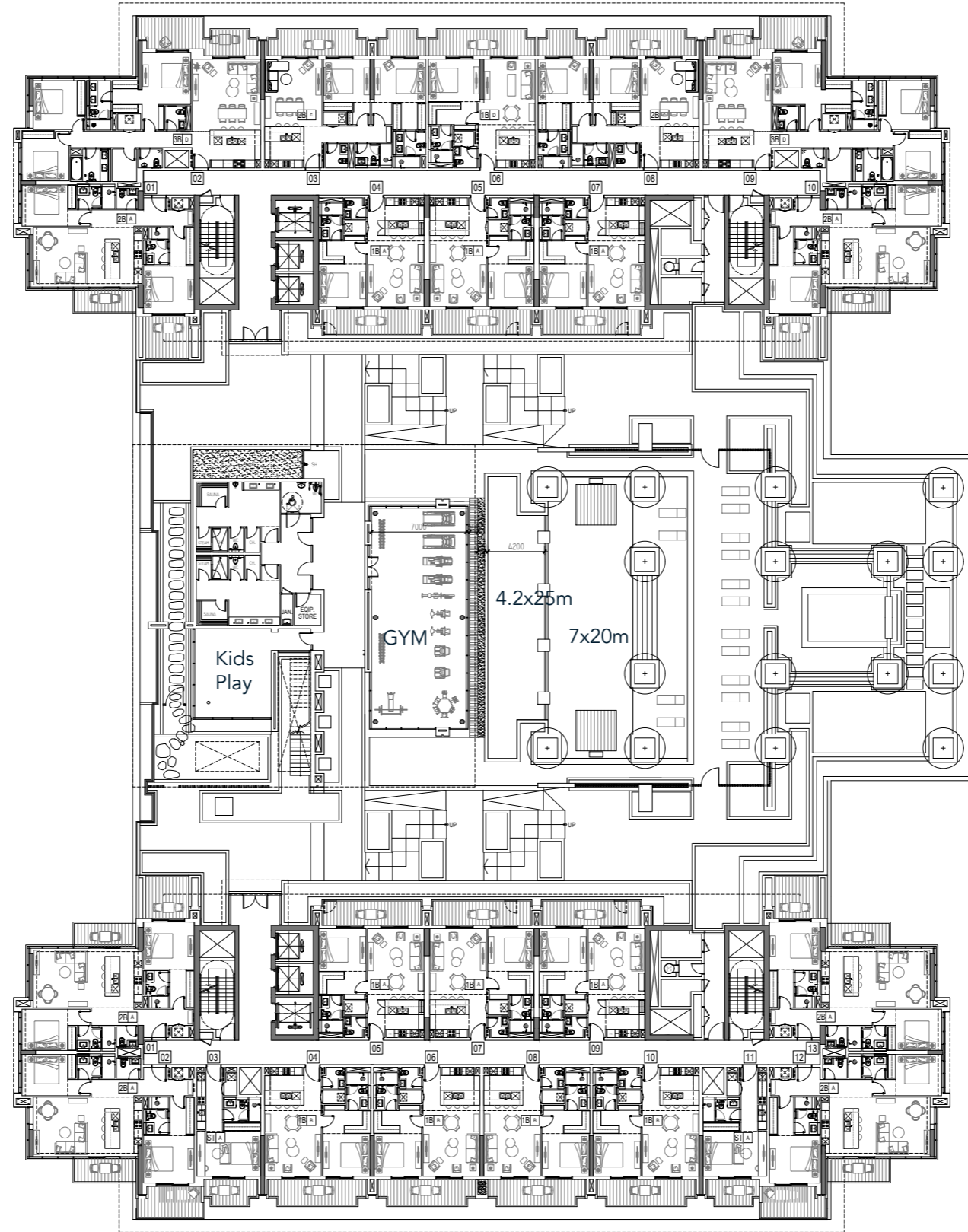
View Study







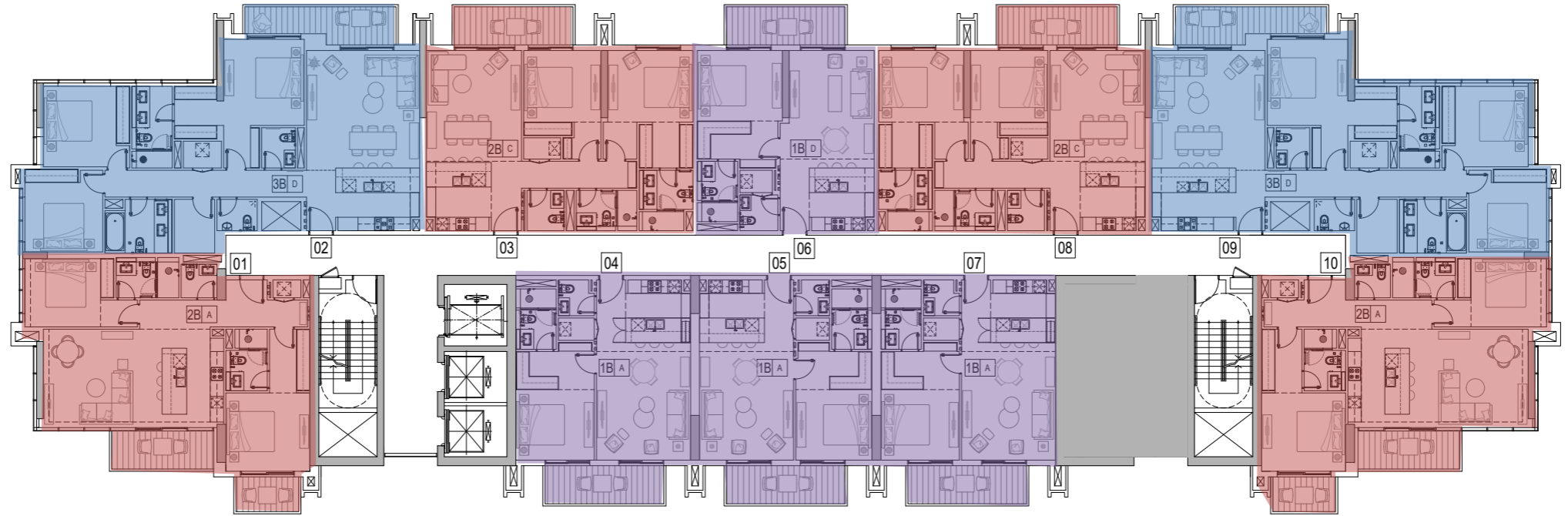








Tower B



277 total units

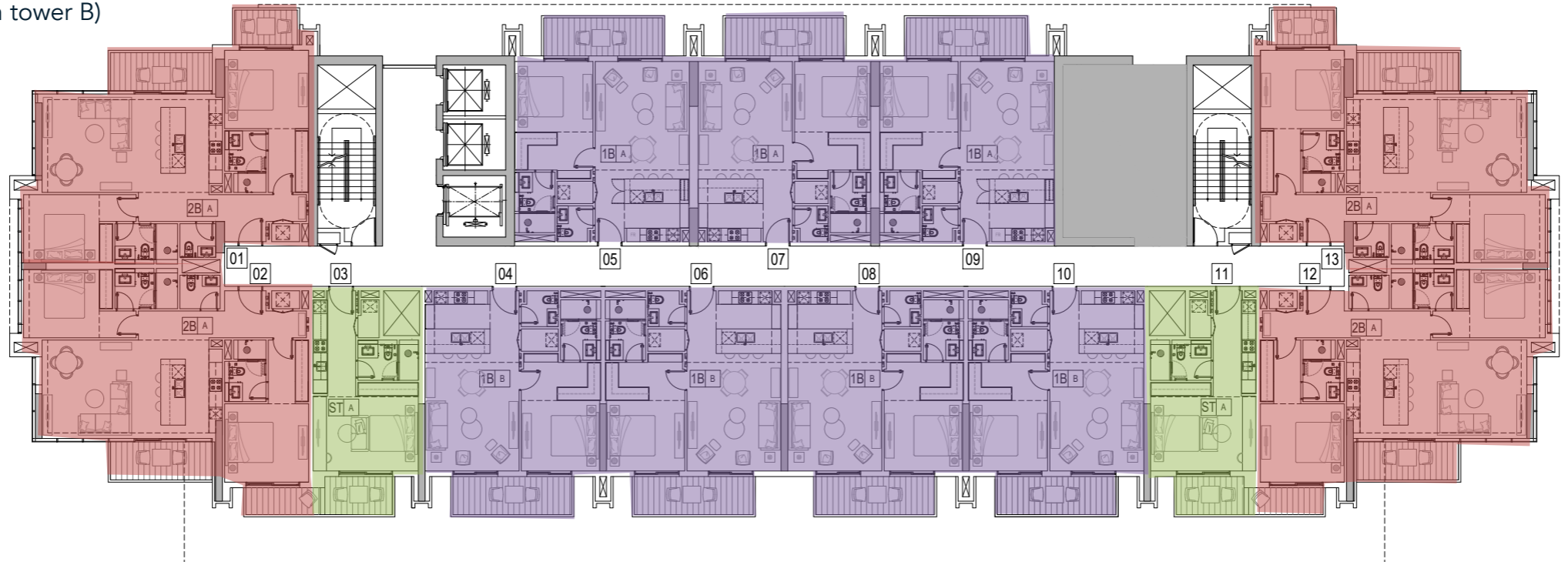
20 - studios

146 - 1 beds

88 - 2 beds

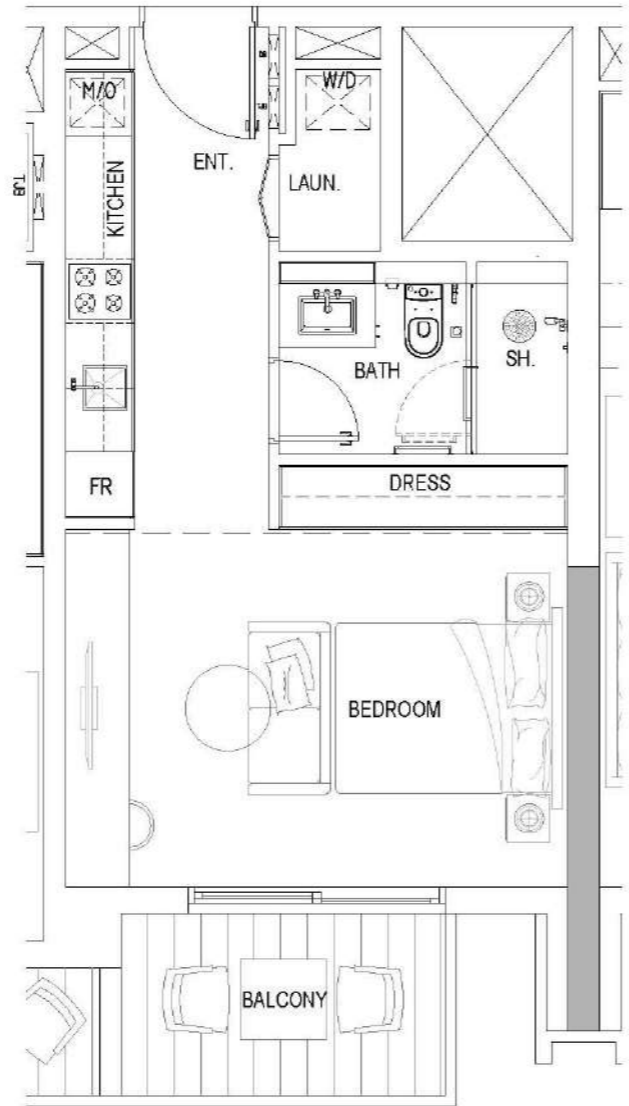
23 - 3 beds (all in tower B)

Tower A





STUDIO TYPE A (TOWER A) KW.ELLINGTONPROPERTIES.AE



1ST TO 10TH FLOOR

Internal Living Area	390.52 sq.ft.
External Living Area	65.45 sq.ft.
Total Living Area	455.96 sq.ft.

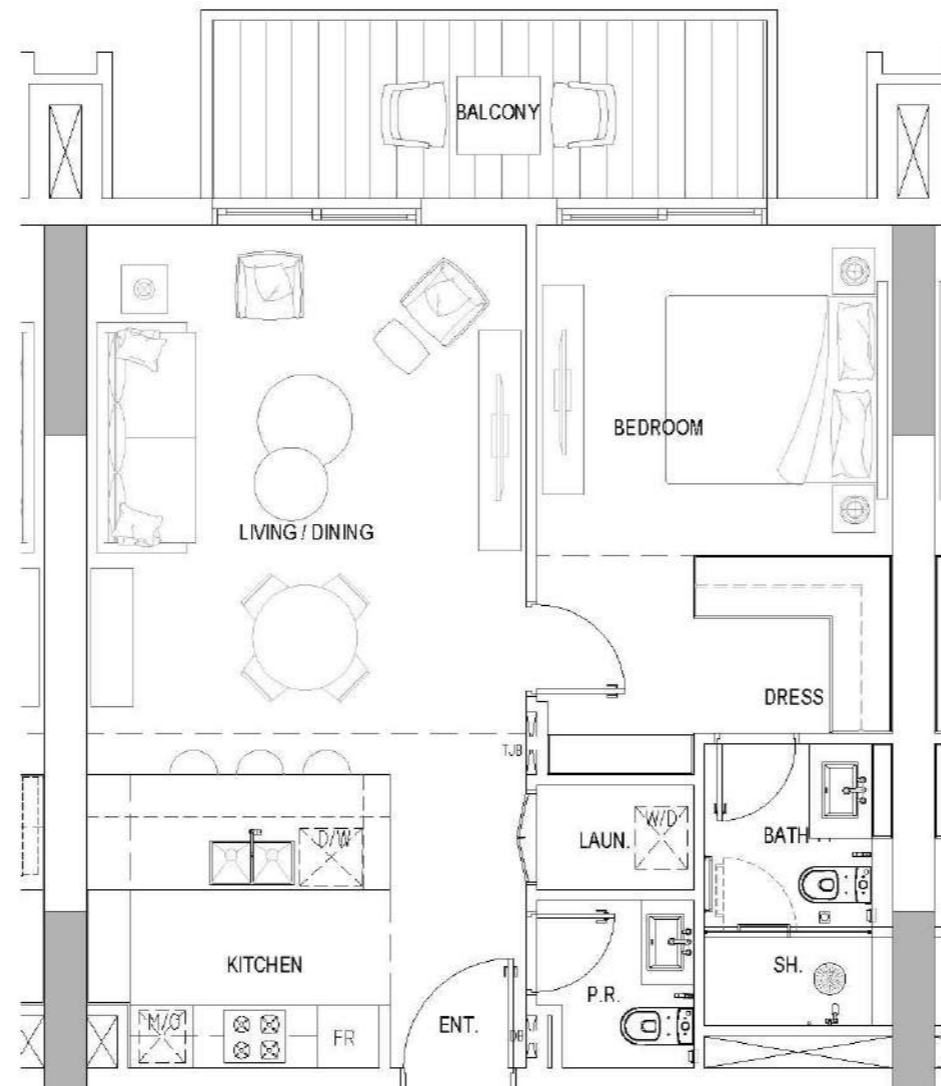


All drawings and dimensions are approximate. Drawings are not to scale and are subject to change without notice. The developer reserves the right to make revisions. The units are measured at typical floor in the building and columns may vary in size depending on the floor level. The furnishings and accessories shown are for representation only. The length and width of the Unit and balcony varies depending on which floor and which orientation the unit is located within the building to comply with the building authority regulations. Apartment unit sizes may vary. Actual unit sizes will be reflected on the Sales and Purchase Agreement.



1 BEDROOM TYPE A (TOWER A&B)

KW.ELLINGTONPROPERTIES.AE



**MODEL SUITE
COMING SOON!**

1ST TO 12TH FLOOR

Internal Living Area	707.73 sq.ft.
External Living Area	109.04 sq.ft.
Total Living Area	816.77 sq.ft.

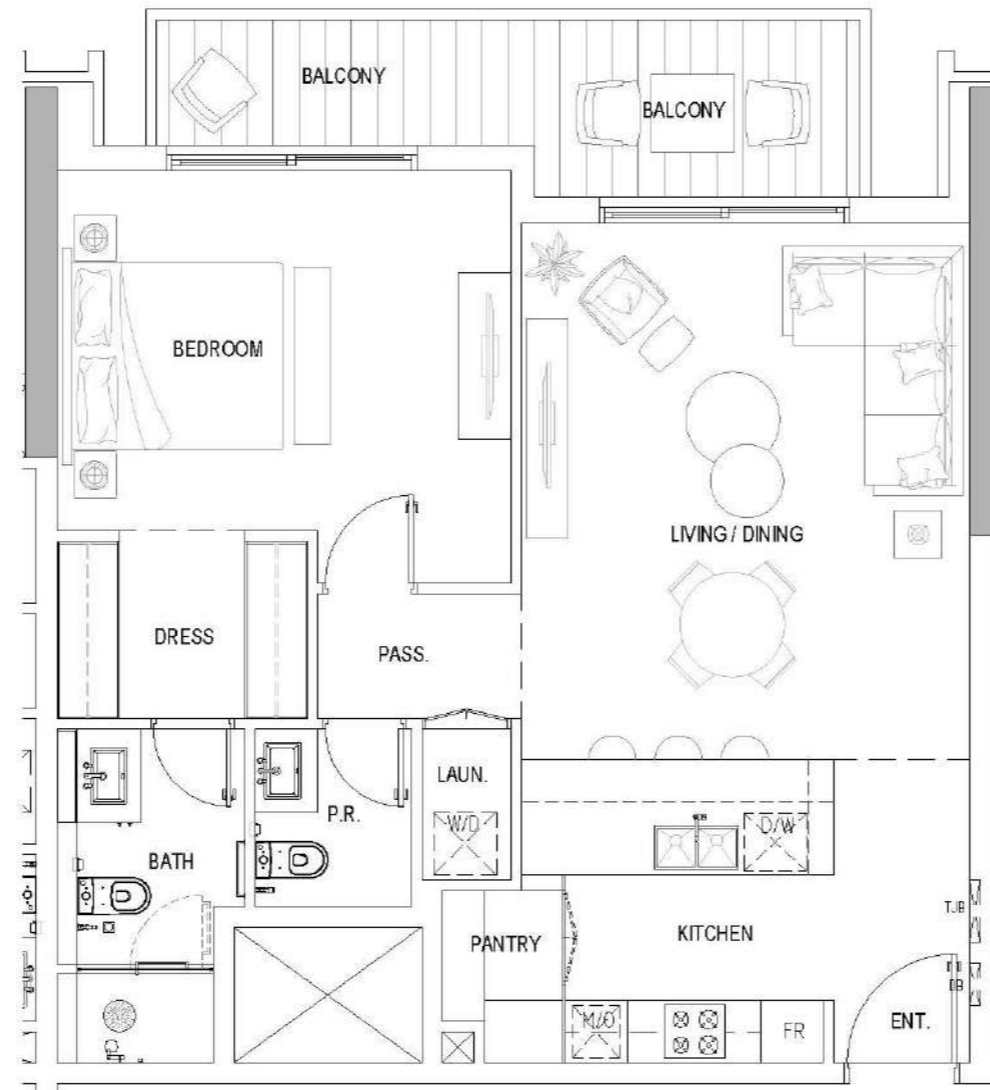


All drawings and dimensions are approximate. Drawings are not to scale and are subject to change without notice. The developer reserves the right to make revisions. The units are measured at typical floor in the building and columns may vary in size depending on the floor level. The furnishings and accessories shown are for representation only. The length and width of the Unit and balcony varies depending on which floor and which orientation the unit is located within the building to comply with the building authority regulations. Apartment unit sizes may vary. Actual unit sizes will be reflected on the Sales and Purchase Agreement.



1 BEDROOM TYPE C (TOWER B)

KW.ELLINGTONPROPERTIES.AE



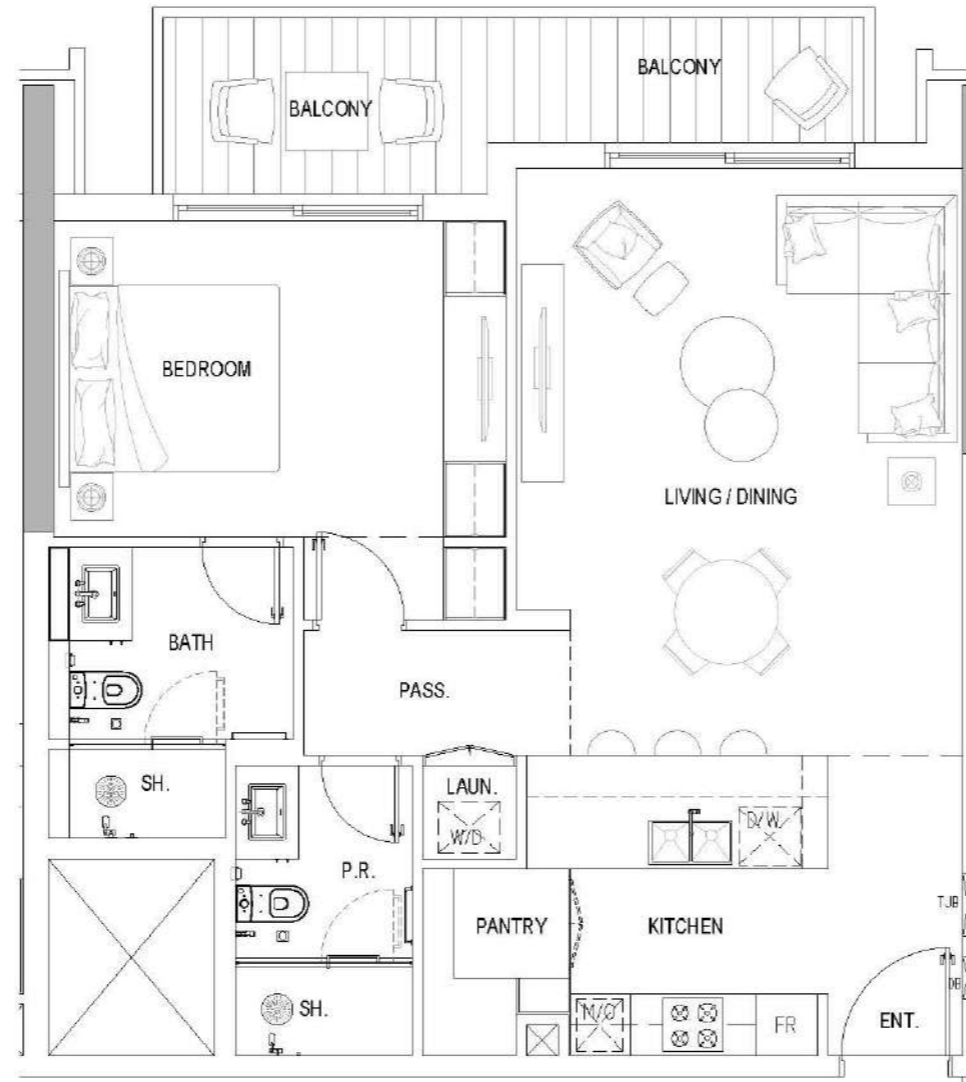
11TH FLOOR

Internal Living Area	793.31 sq.ft.
External Living Area	119.16 sq.ft.
Total Living Area	912.46 sq.ft.



1 BEDROOM TYPE E (TOWER A)

KW.ELLINGTONPROPERTIES.AE



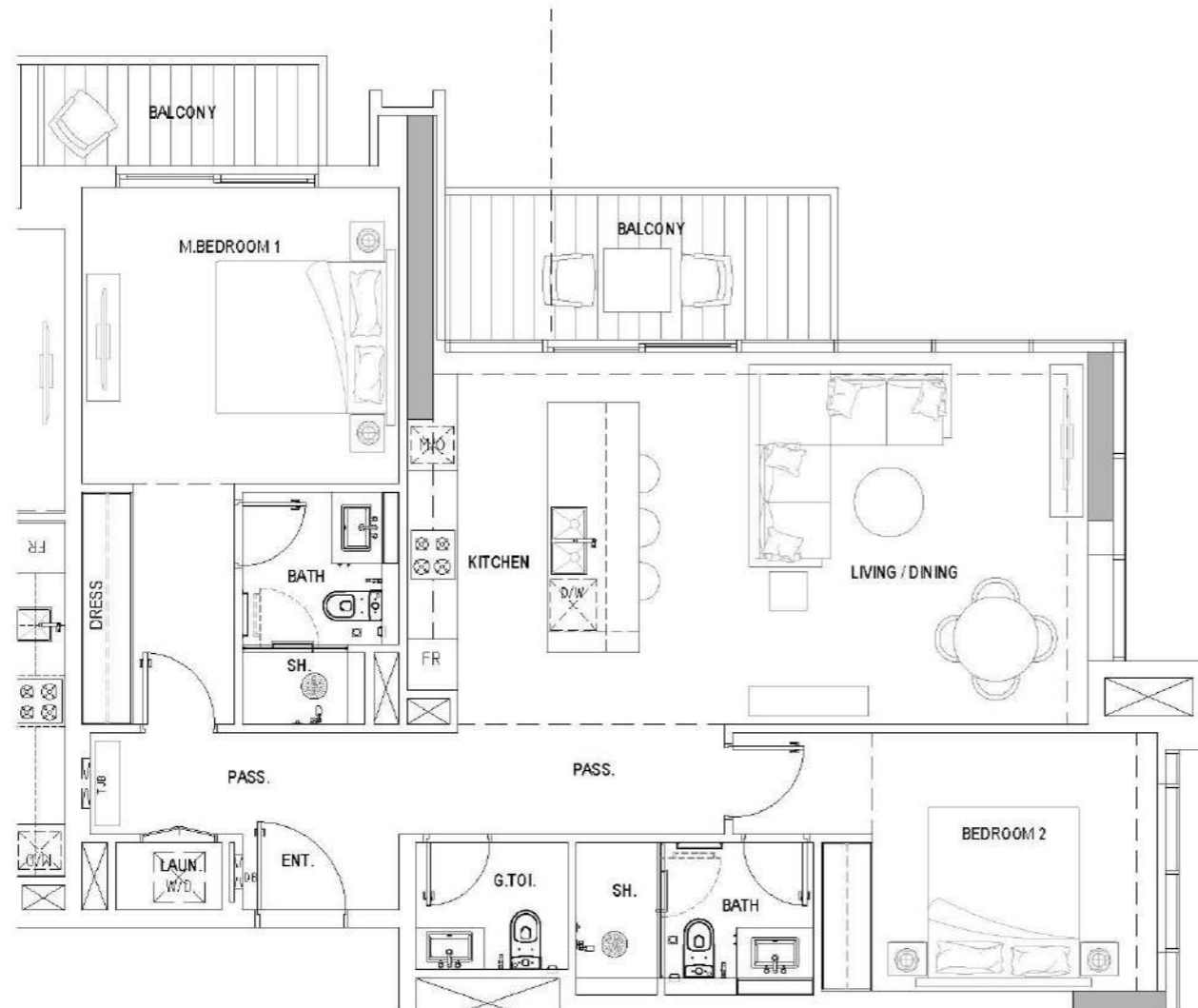
11TH FLOOR

Internal Living Area	785.02 sq.ft.
External Living Area	119.16 sq.ft.
Total Living Area	904.18 sq.ft.



2 BEDROOM TYPE A (TOWER A&B)

KW.ELLINGTONPROPERTIES.AE



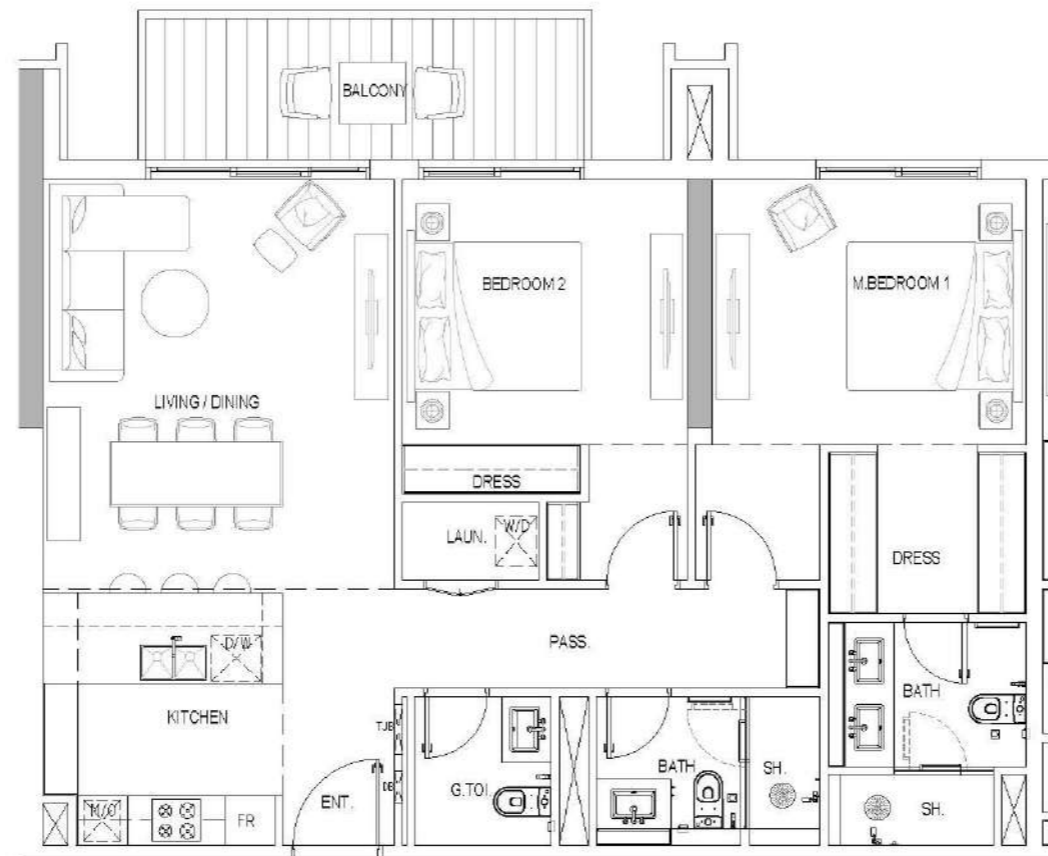
1ST TO 10TH FLOOR

Internal Living Area	1,084.15 sq.ft.
External Living Area	149.62 sq.ft.
Total Living Area	1,233.77 sq.ft.



2 BEDROOM TYPE C (TOWER B)

KW.ELLINGTONPROPERTIES.AE



1ST TO 10TH FLOOR

Internal Living Area	1,064.45 sq.ft.
External Living Area	109.04 sq.ft.
Total Living Area	1,173.49 sq.ft.

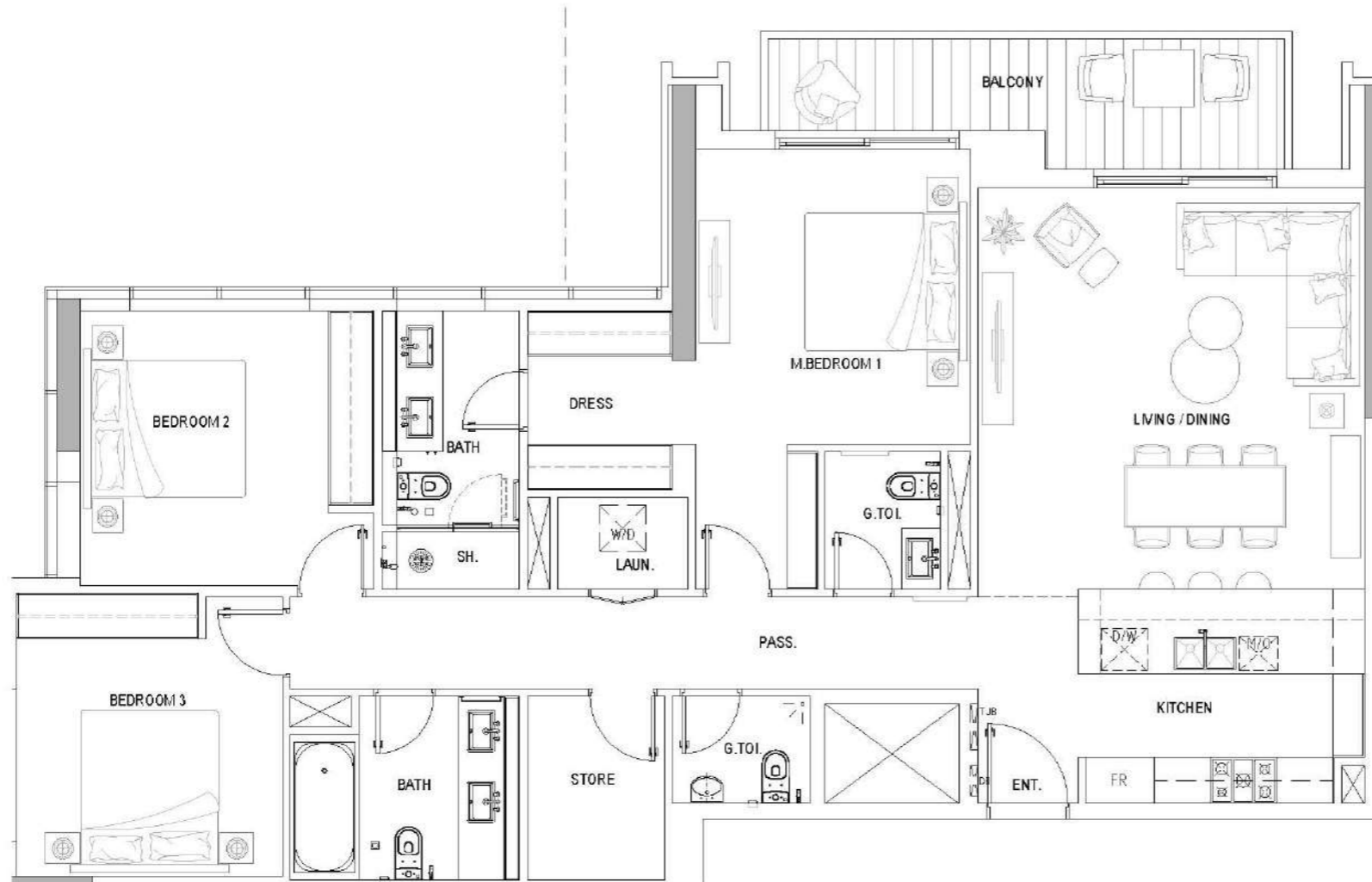


All drawings and dimensions are approximate. Drawings are not to scale and are subject to change without notice. The developer reserves the right to make revisions. The units are measured at typical floor in the building and columns may vary in size depending on the floor level. The furnishings and accessories shown are for representation only. The length and width of the Unit and balcony varies depending on which floor and which orientation the unit is located within the building to comply with the building authority regulations. Apartment unit sizes may vary. Actual unit sizes will be reflected on the Sales and Purchase Agreement.



3 BEDROOM TYPE D (TOWER B)

KW.ELLINGTONPROPERTIES.AE



Internal Living Area	1,479.30 sq.ft.
External Living Area	121.10 sq.ft.
Total Living Area	1,600.39 sq.ft.



All drawings and dimensions are approximate. Drawings are not to scale and are subject to change without notice. The developer reserves the right to make revisions. The units are measured at typical floor in the building and columns may vary in size depending on the floor level. The furnishings and accessories shown are for representation only. The length and width of the Unit and balcony varies depending on which floor and which orientation the unit is located within the building to comply with the building authority regulations. Apartment unit sizes may vary. Actual unit sizes will be reflected on the Sales and Purchase Agreement.







